



Main  
view





Long-view  
of interior





Cookie's House  
circular drive





RV Park  
# 1





ANTIQUES



RV PARK

COLLECTIBLES

Corner sign  
close-up

**RV PARK**  
**NEXT LEFT**  
**500 Feet**

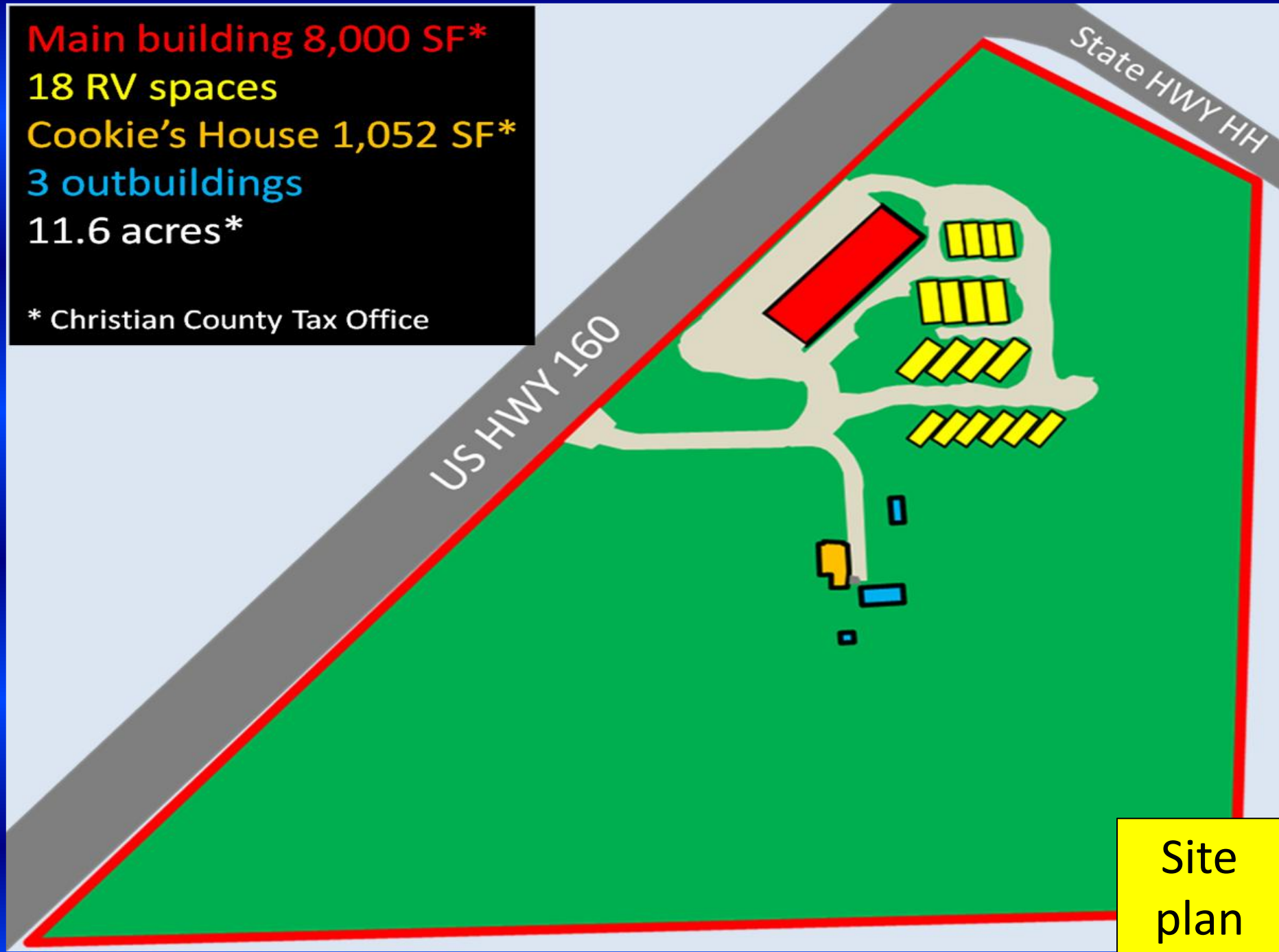
**ANTIQUES**

Great visibility &  
2<sup>nd</sup> sign view 1

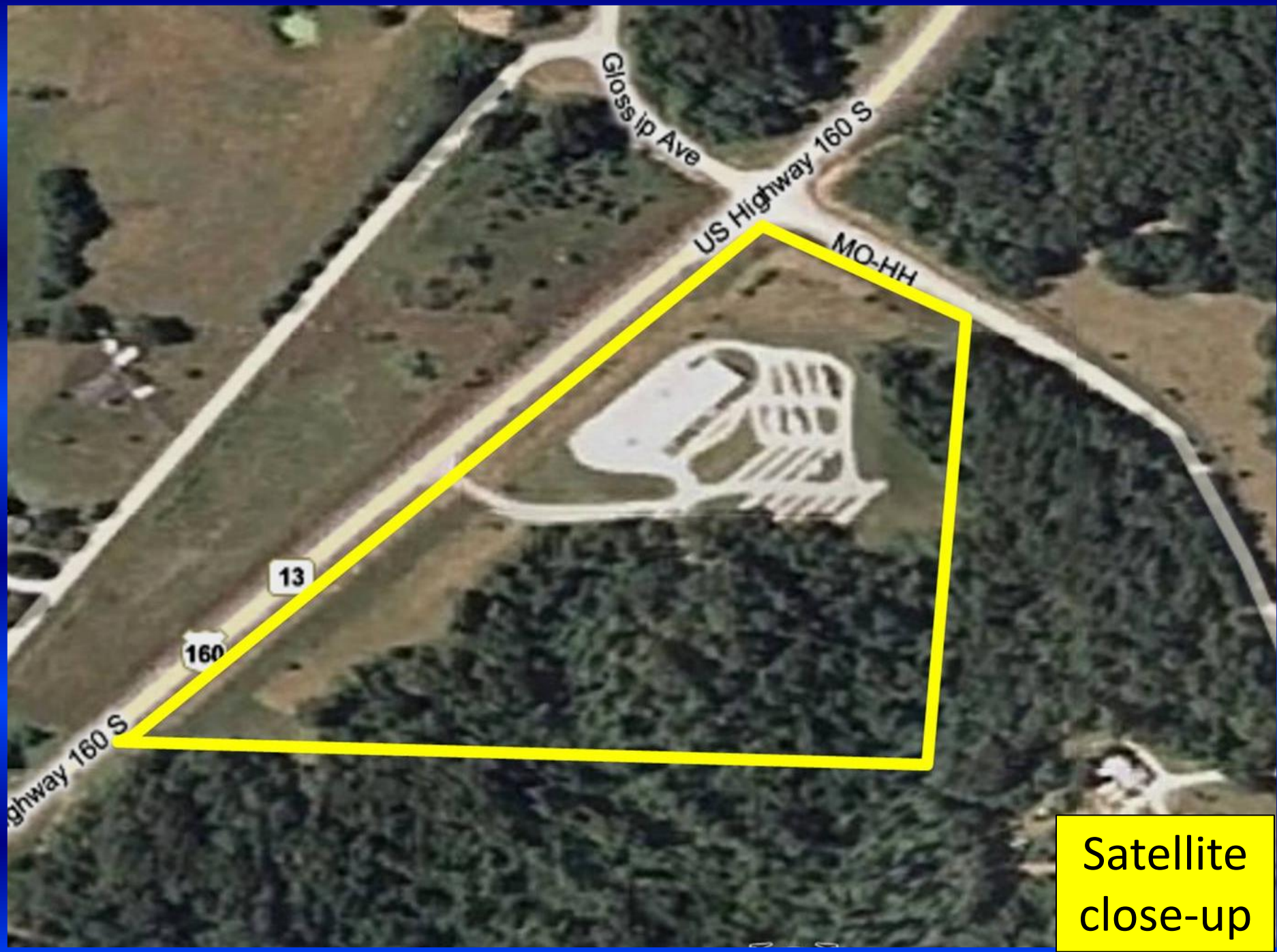


**Main building 8,000 SF\***  
**18 RV spaces**  
**Cookie's House 1,052 SF\***  
**3 outbuildings**  
**11.6 acres\***

\* Christian County Tax Office



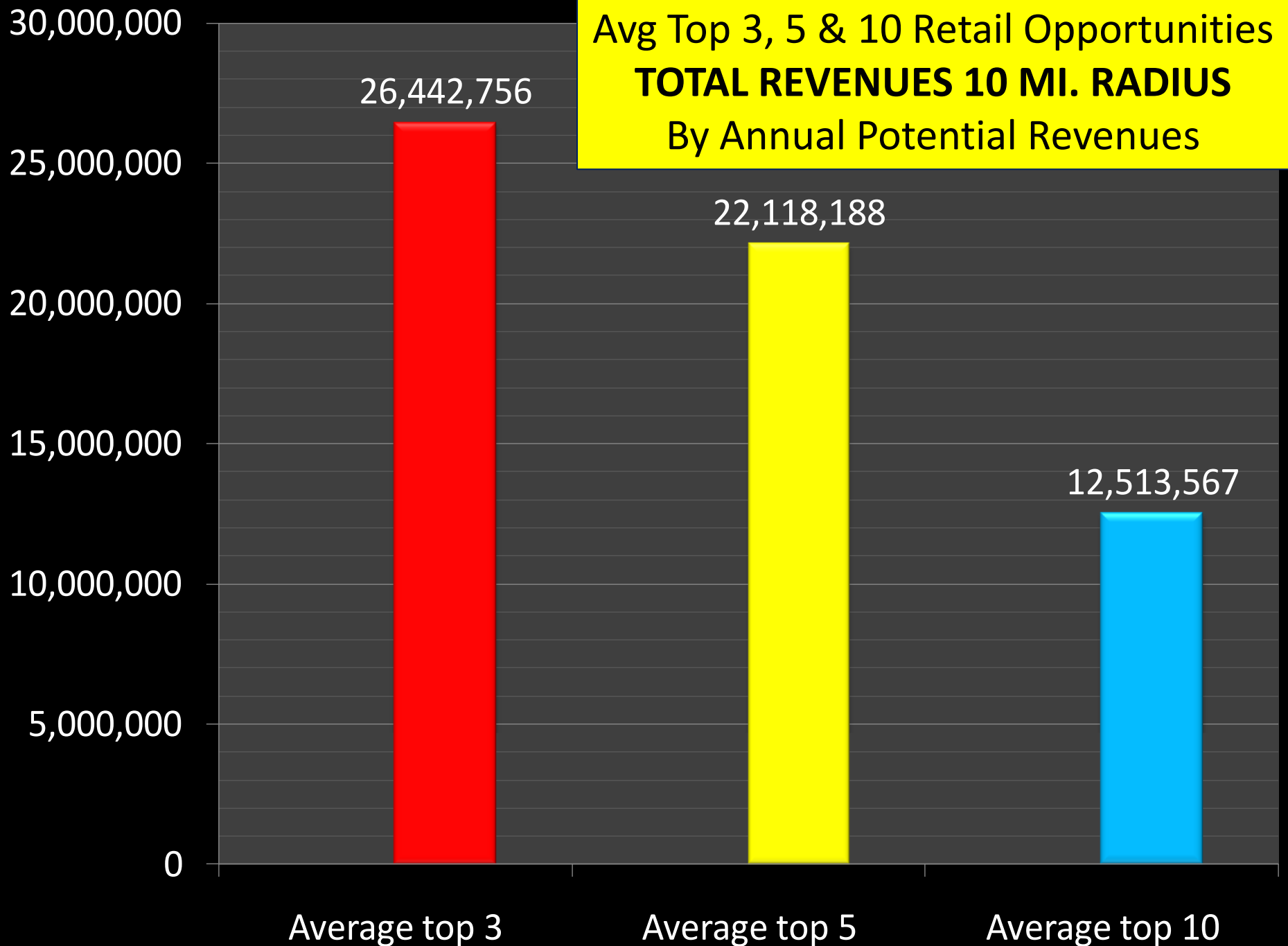
Site  
plan



Satellite  
close-up



Avg Top 3, 5 & 10 Retail Opportunities  
**TOTAL REVENUES 10 MI. RADIUS**  
By Annual Potential Revenues







Rest  
Rooms





Office &  
storage areas





Vintage  
shopkeepers





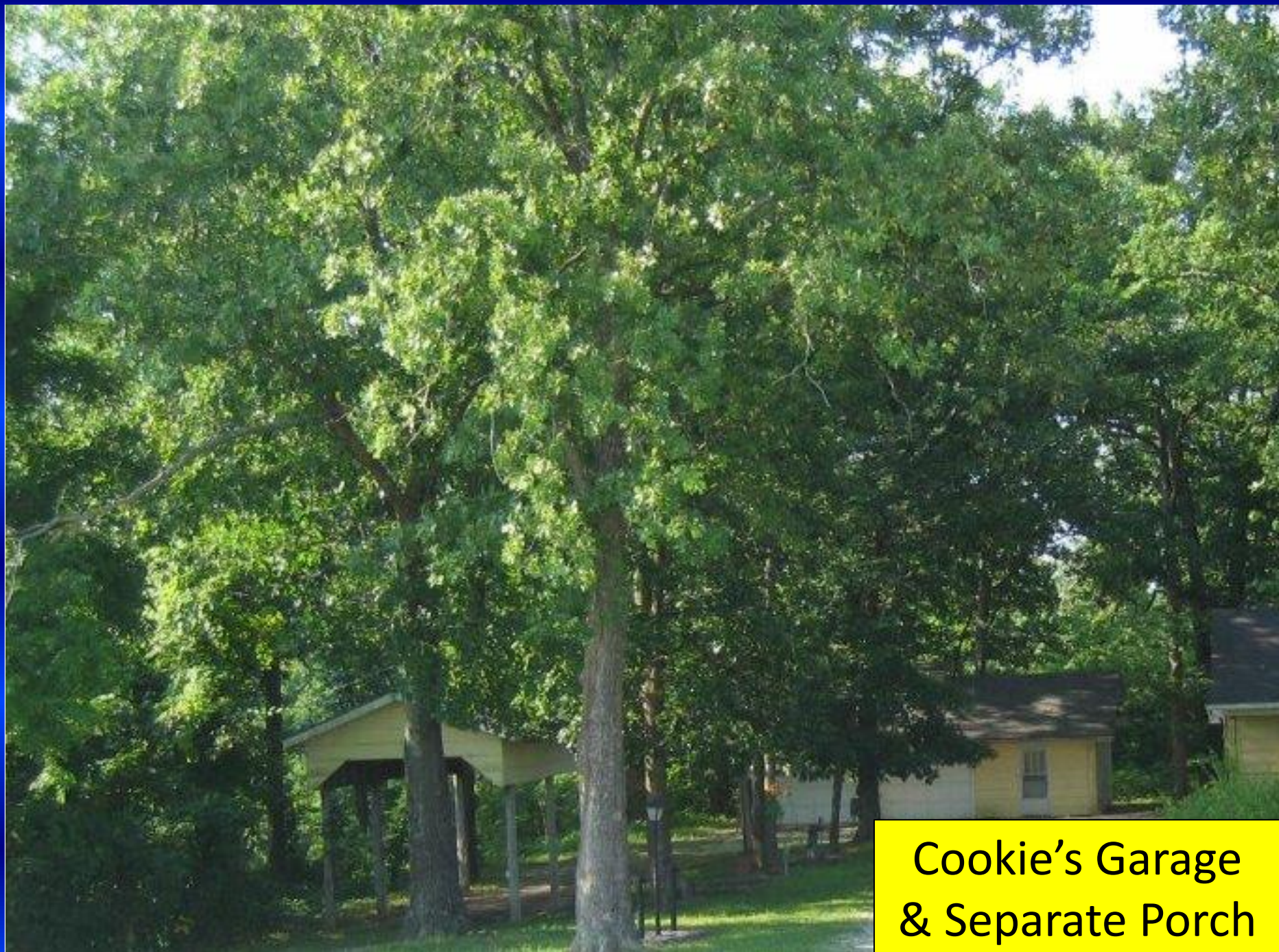
Antiques &  
RV park





Cookie's House  
& improvements





**Cookie's Garage  
& Separate Porch**





Northside of  
Antique World





Main view  
# 2





RV Park  
view # 2





RV Park  
close-up





Tree lined  
RV Park





RV Park  
view # 3





RV Park  
view # 4





Corner  
sign





Street view  
northbound



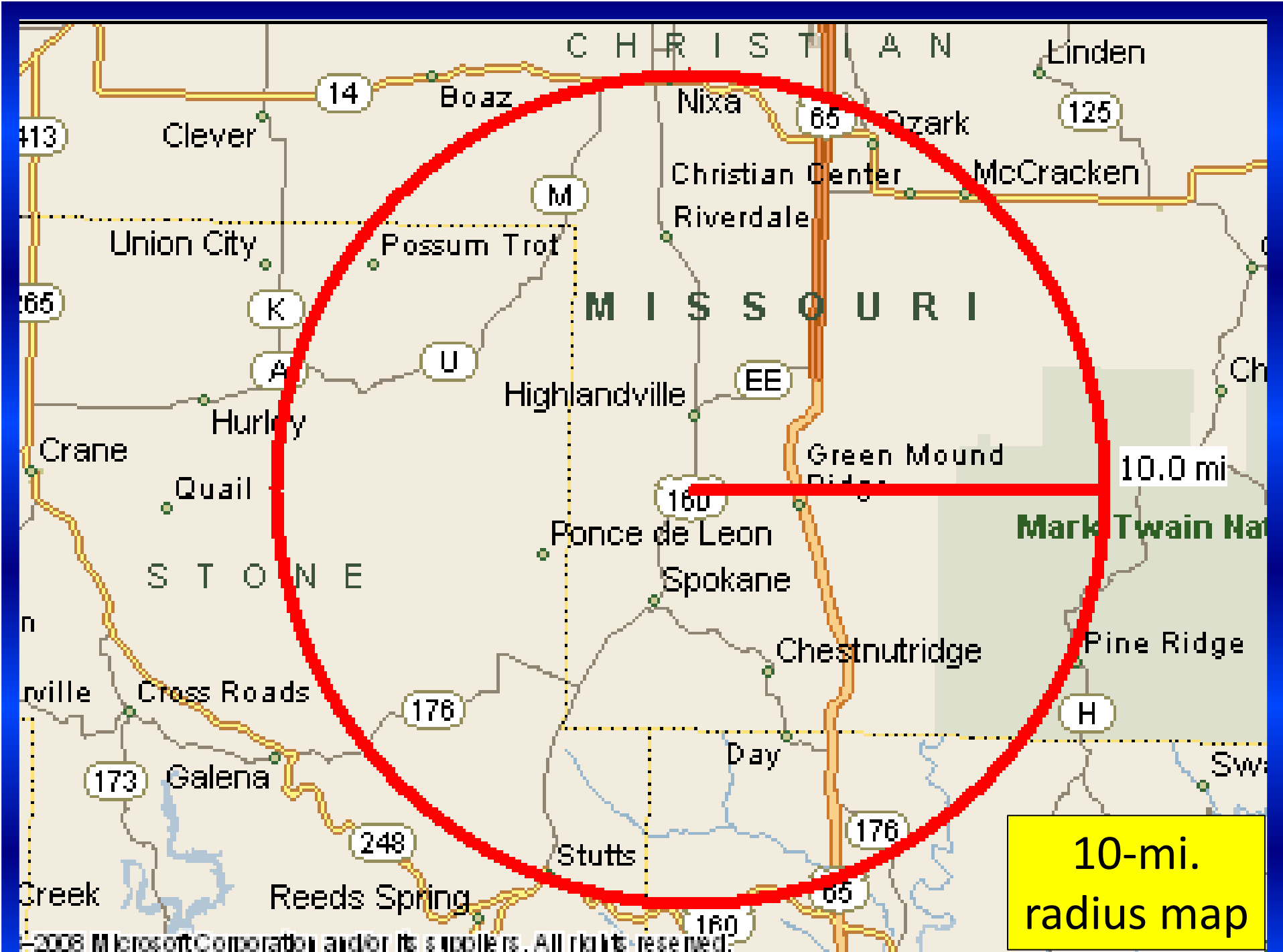


**RV PARK**  
**NEXT LEFT**  
500 Feet

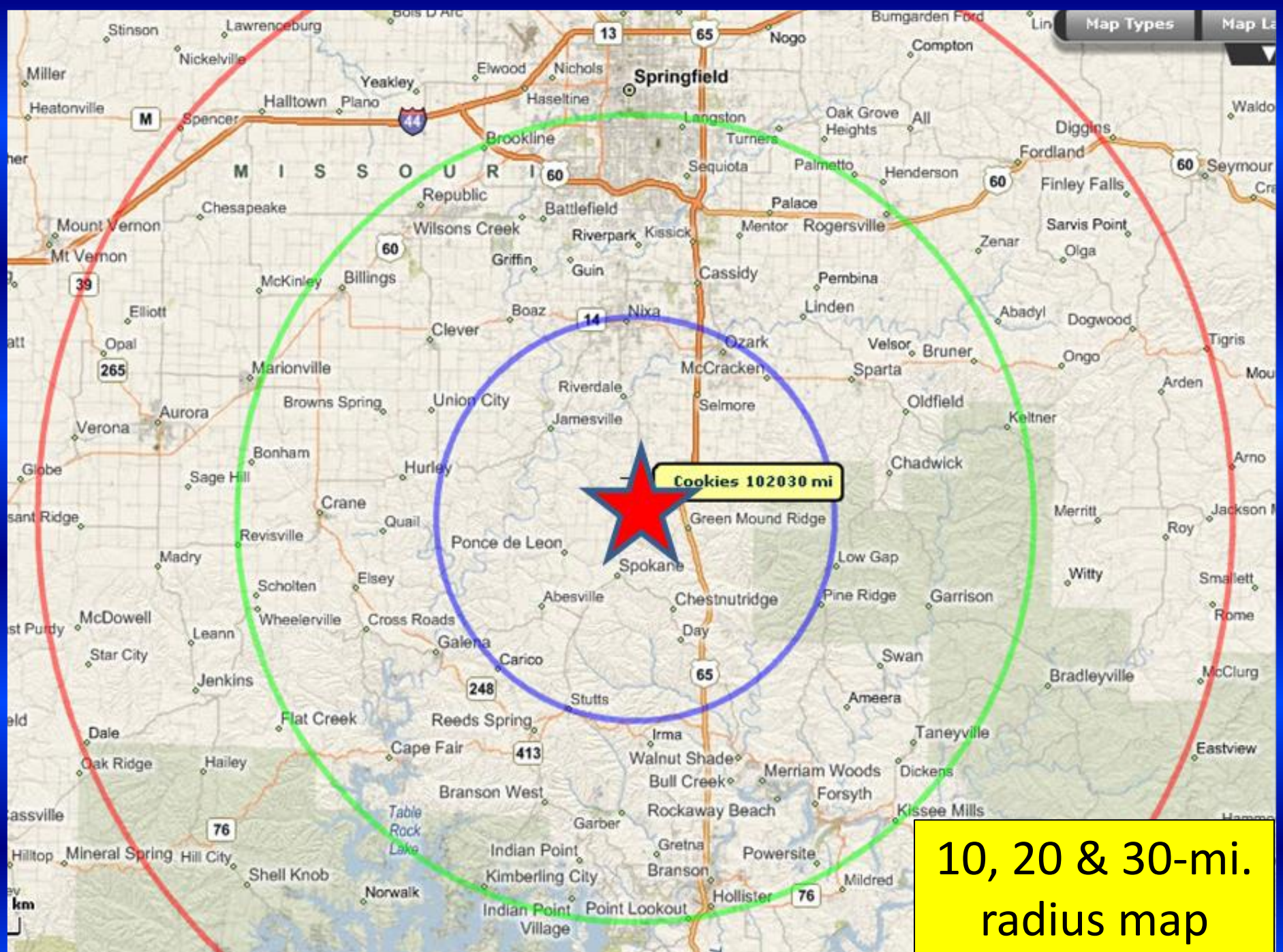
ANTIQUES

Street view  
southbound





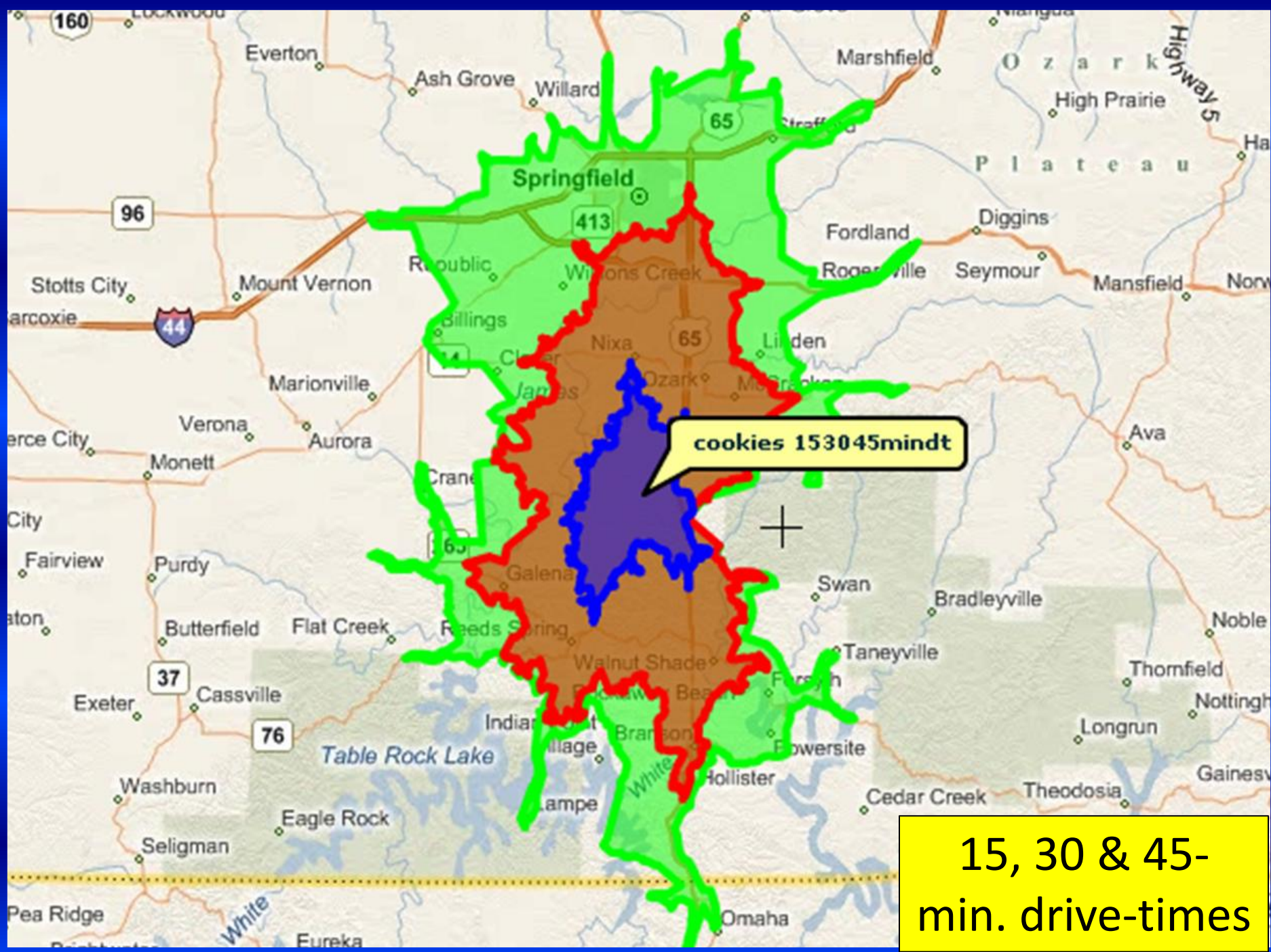




Cookies 102030 mi

10, 20 & 30-mi.  
radius map

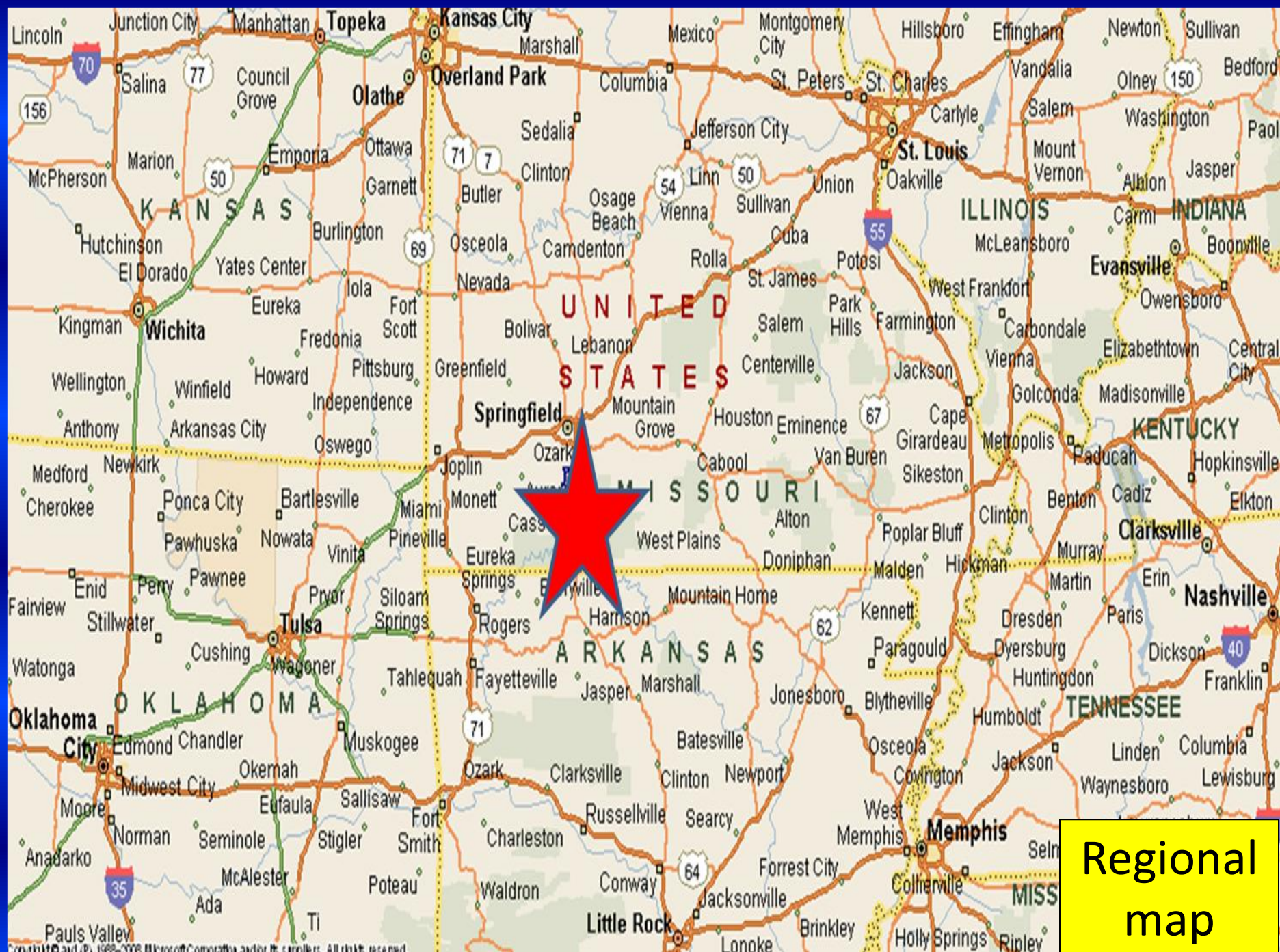




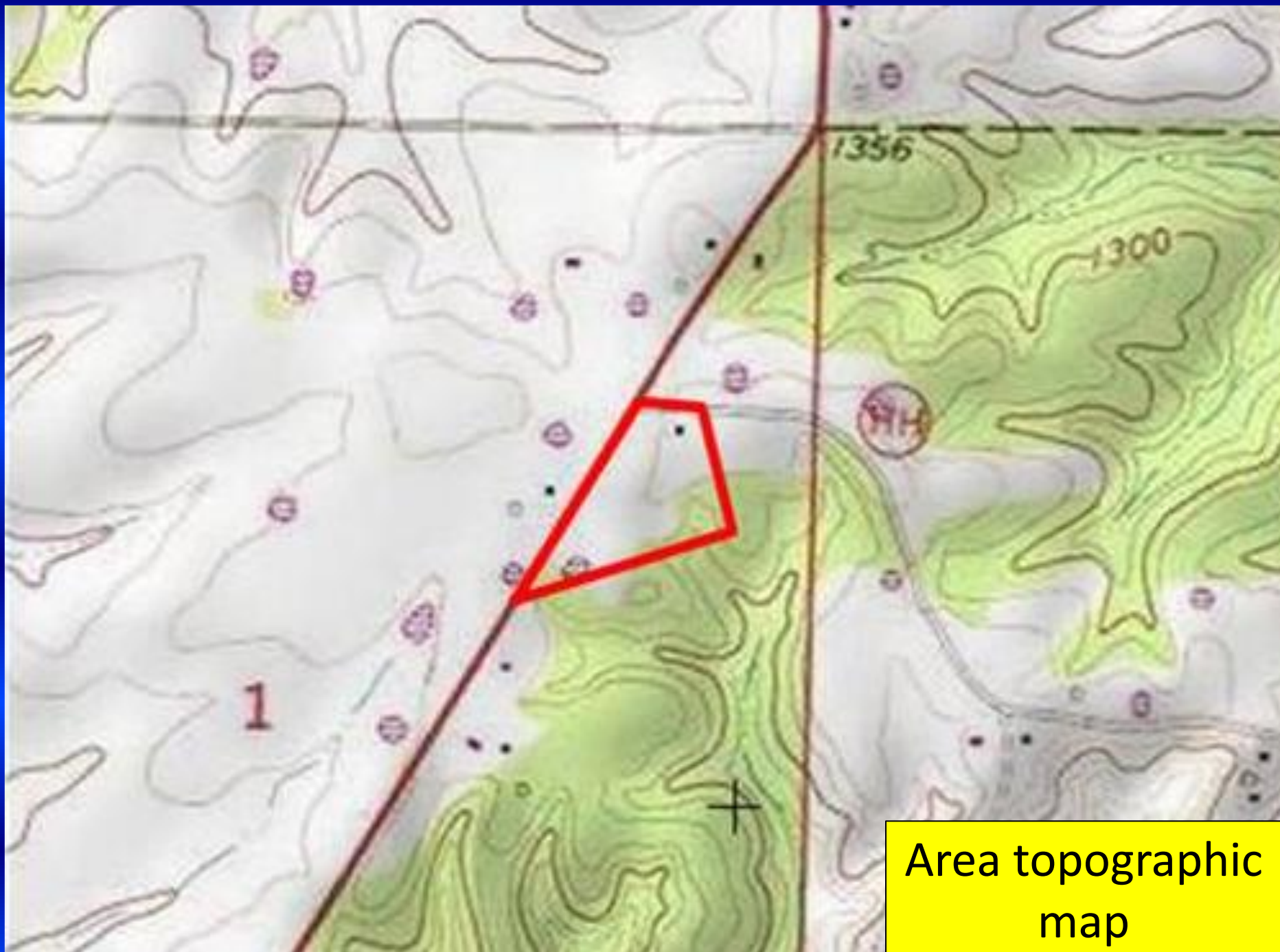
cookies 153045mindt

15, 30 & 45-  
min. drive-times



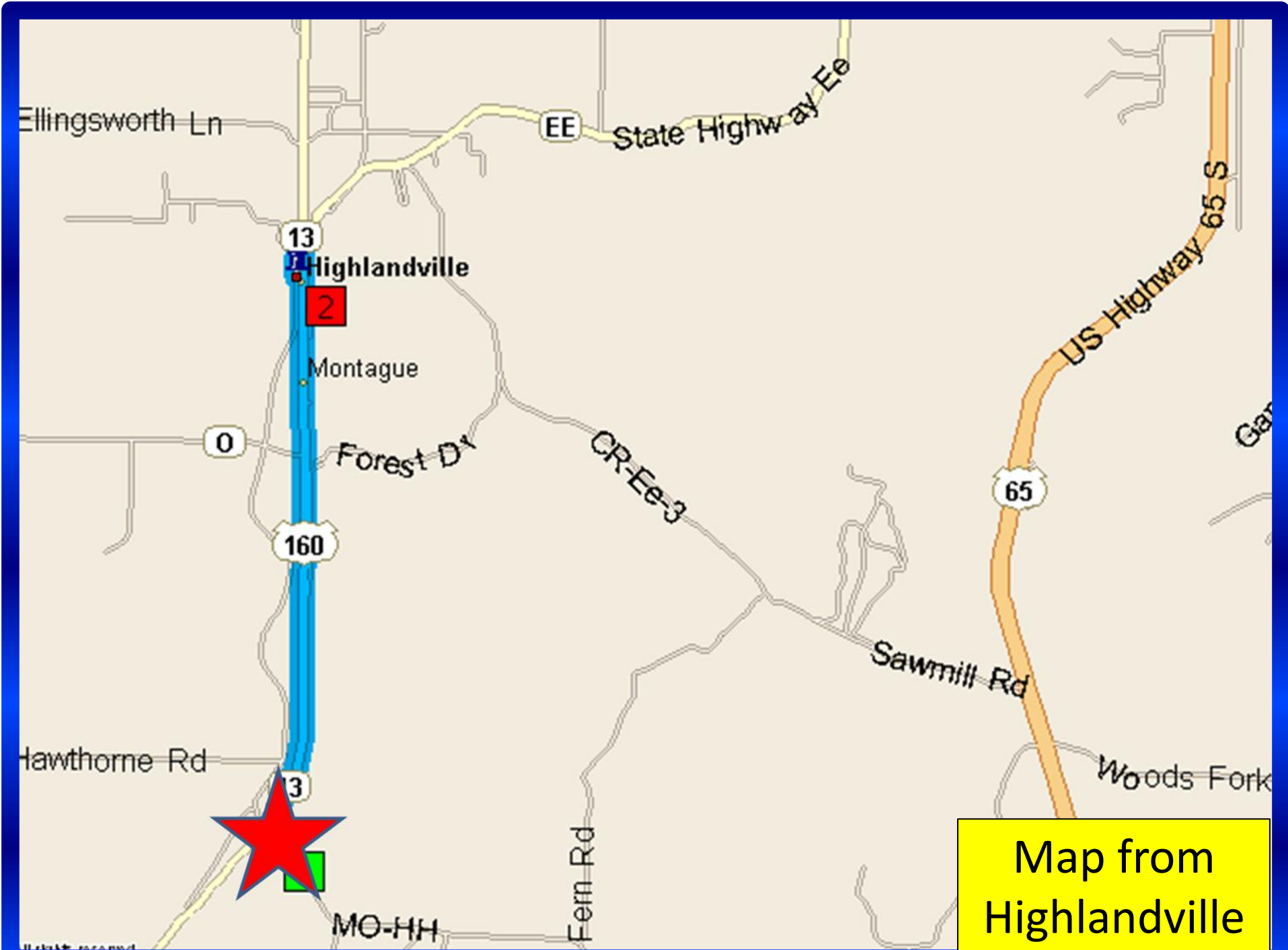




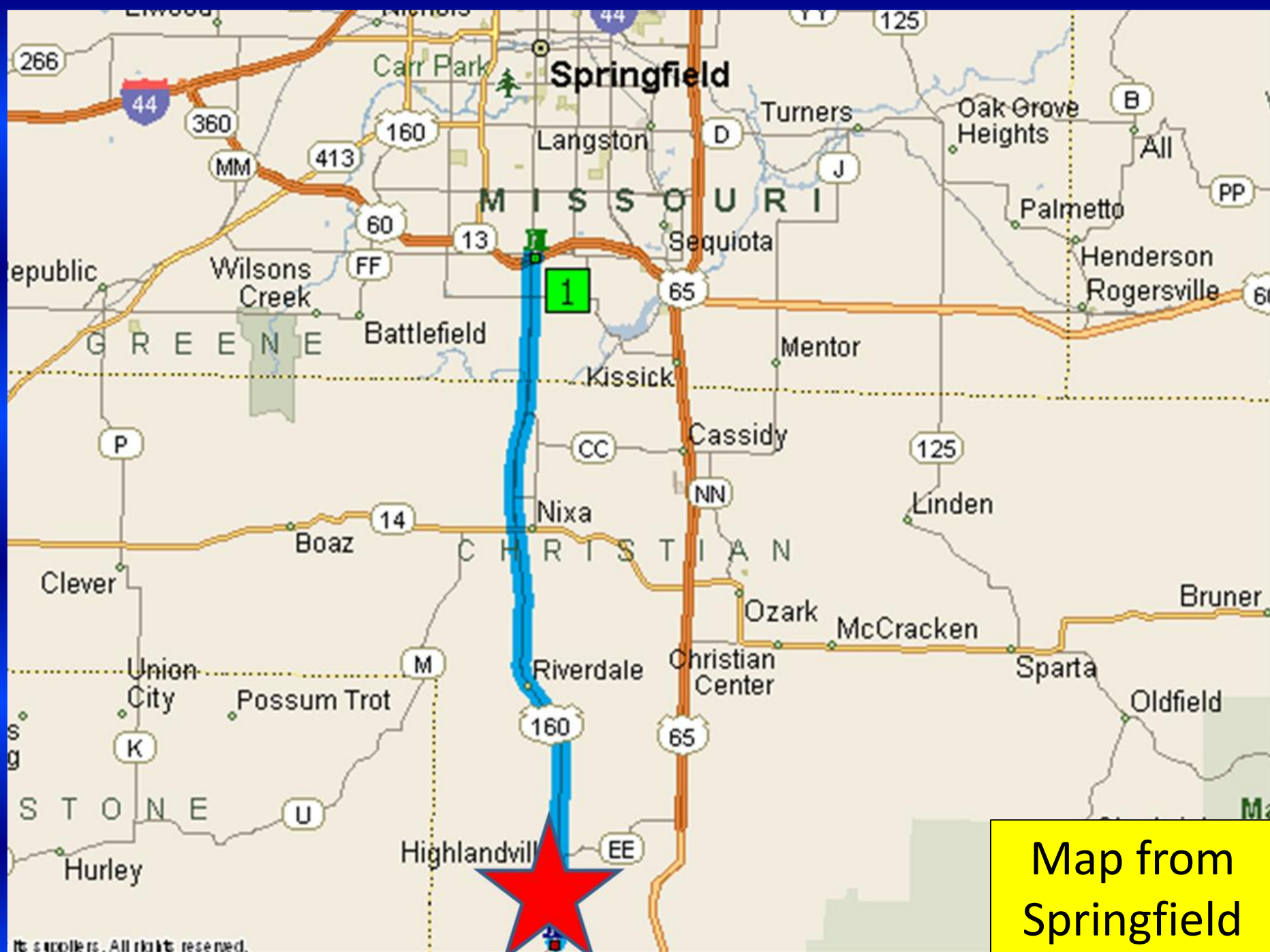


Area topographic  
map



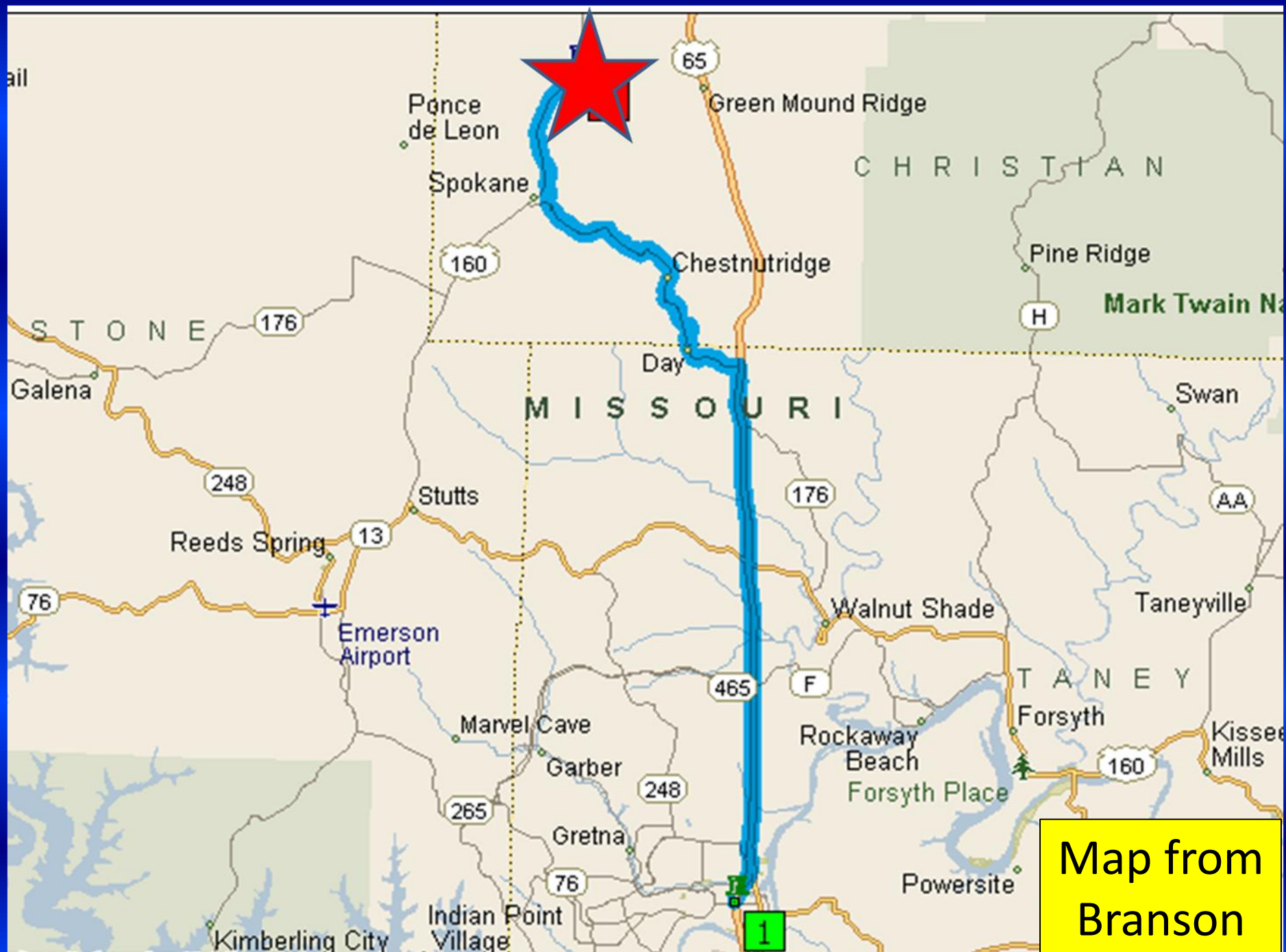






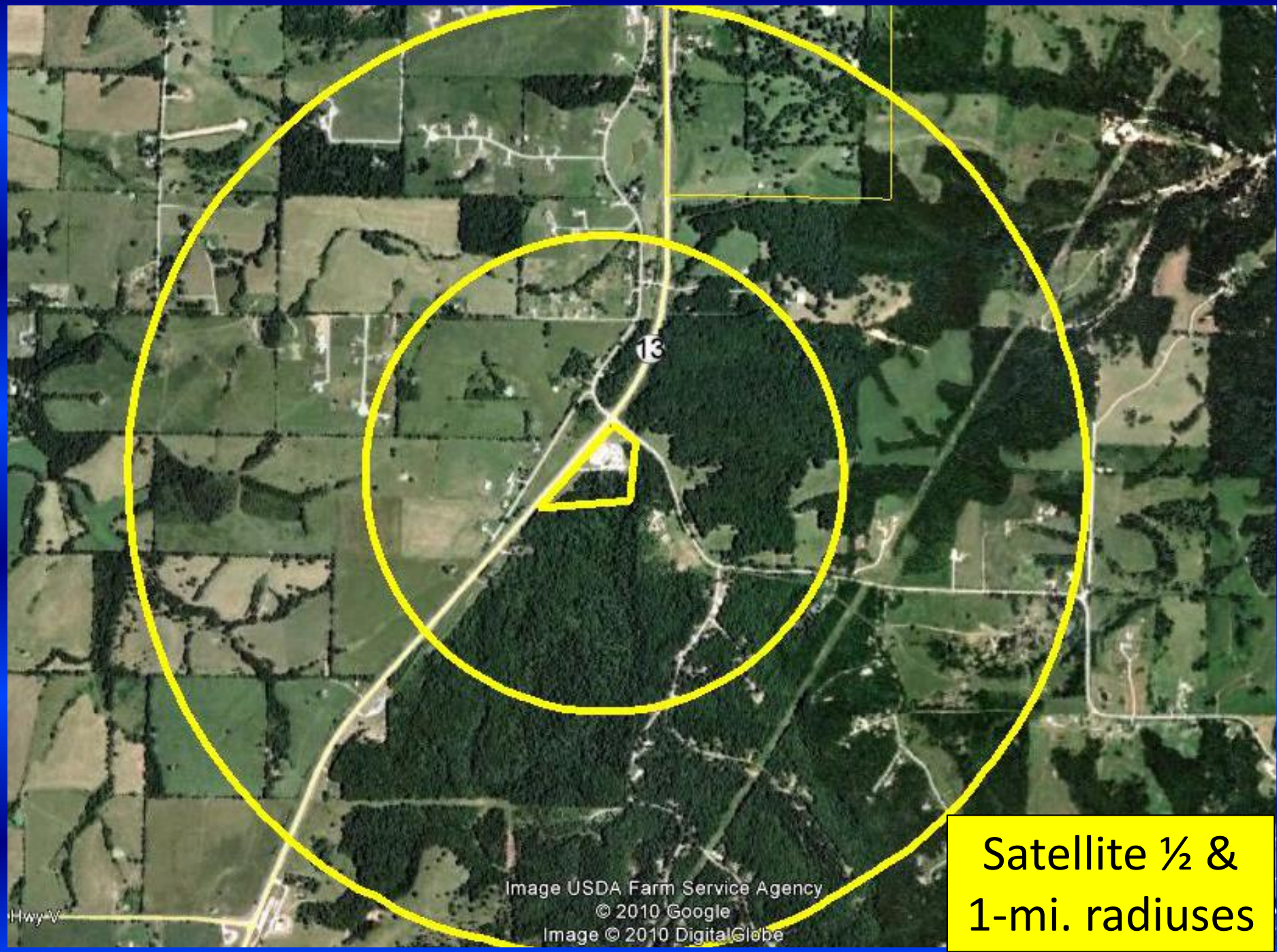
Map from  
Springfield





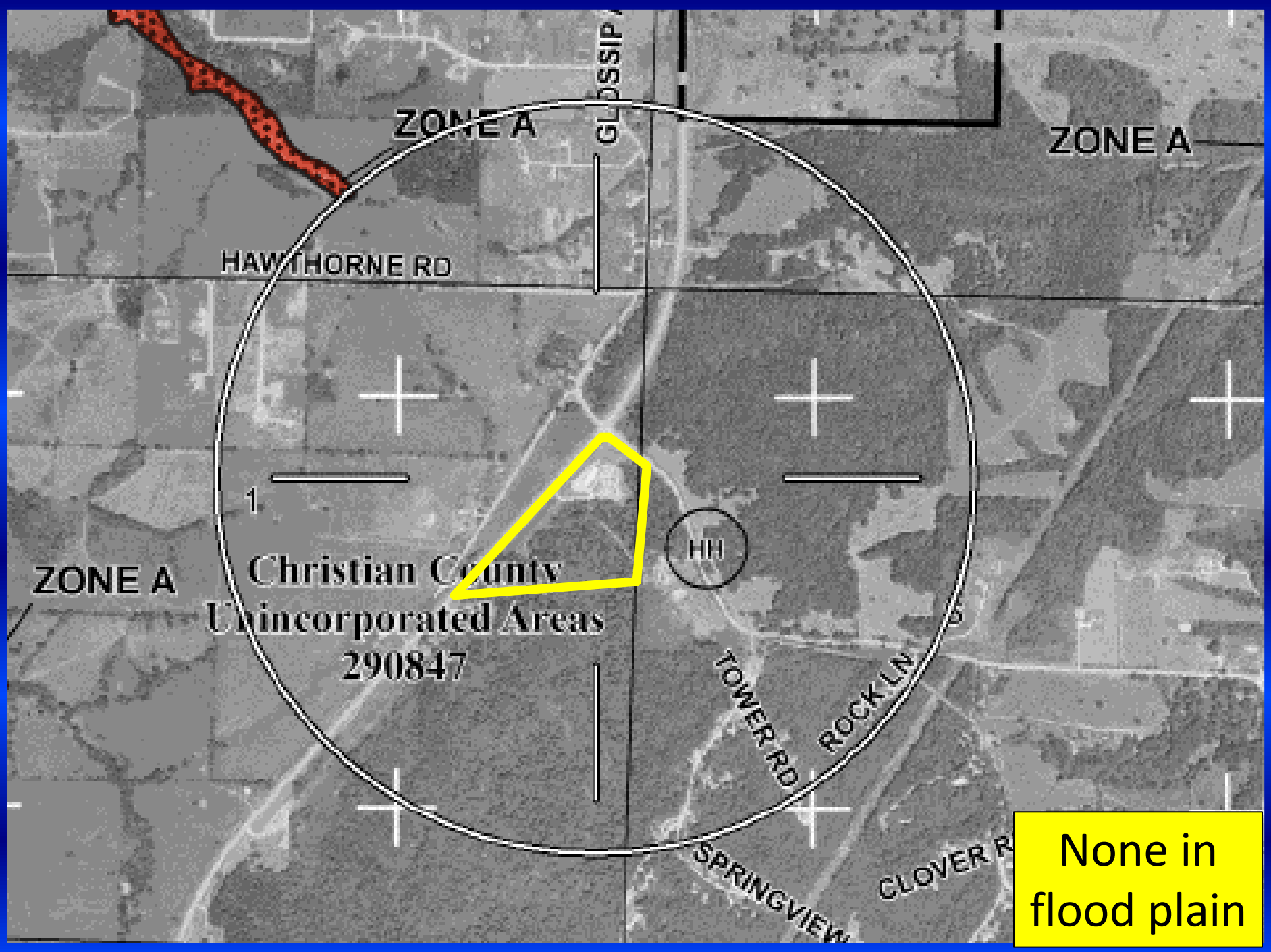
Map from  
Branson





Satellite 1/2 &  
1-mi. radiuses





ZONE A

ZONE A

ZONE A

HAWTHORNE RD

GLOSSIP RD

Christian County  
Unincorporated Areas  
290847

HH

TOWER RD

ROCK LN

SPRINGVIEW

CLOVER RD

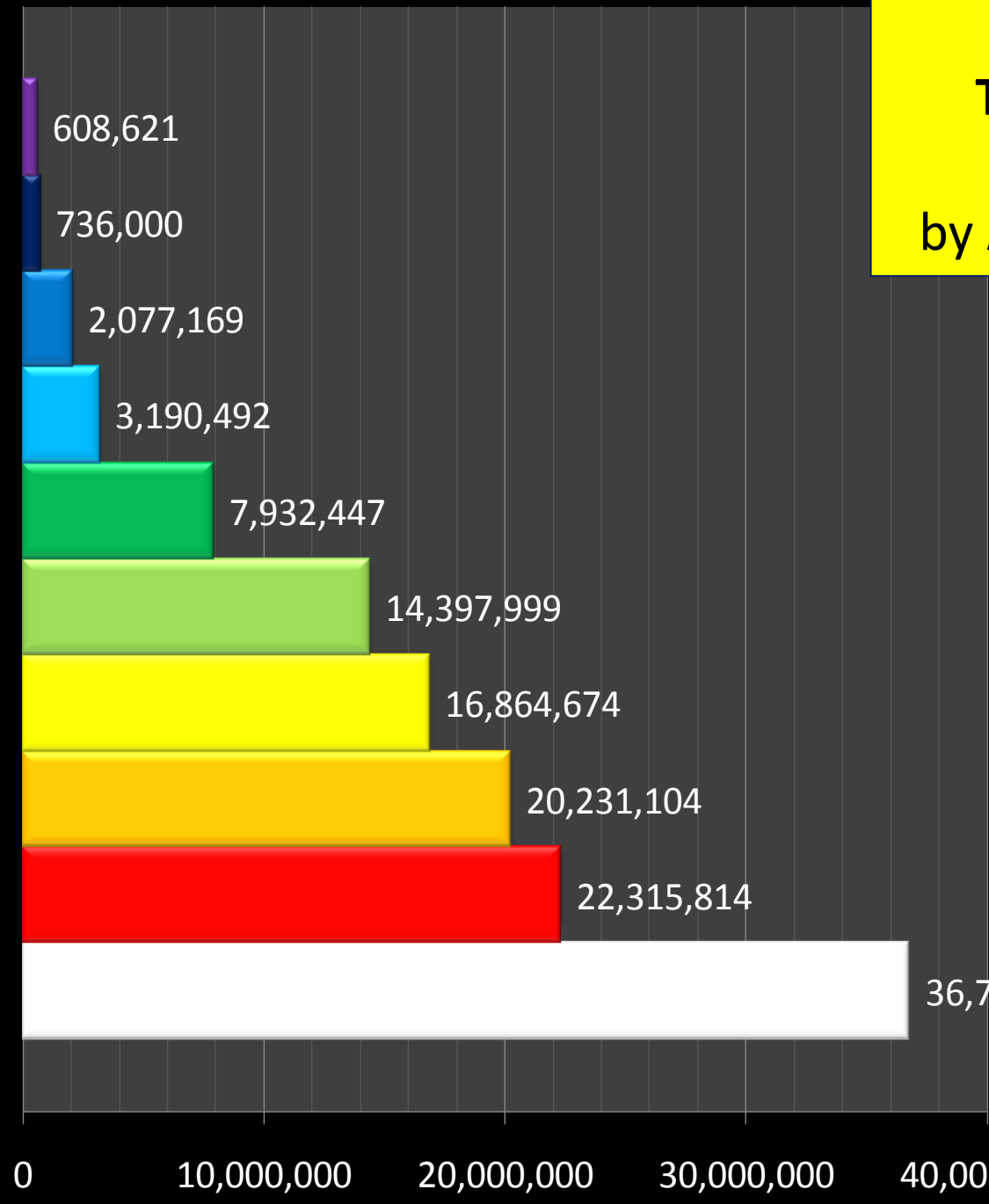
None in  
flood plain



Top 10 Retail Gap Table <b>TOTAL REVENUES 10 MI. RADIUS</b> by Annual Potential Revenues		
Rank	Category	Annual Potential Revenues
1	General Merchandise	36,781,350
2	Automobile Dealer	22,315,814
3	Food & Beverage Store	20,231,104
4	Full-Service Restaurant	16,864,674
5	Department Store	14,397,999
6	Food Services & Drinking	7,932,447
7	Furniture & Home Furnishings	3,190,492
8	Clothing & Accessories	2,077,169
9	Specialty Foods	736,000
10	Office Sup., Stationery & Gifts	608,621
Average top 3		26,442,756
Average top 5		22,118,188
Average top 10		12,513,567



Top 10 Retail Gap Chart  
**TOTAL REVENUES 10 MI.  
RADIUS**  
by Annual Potential Revenues



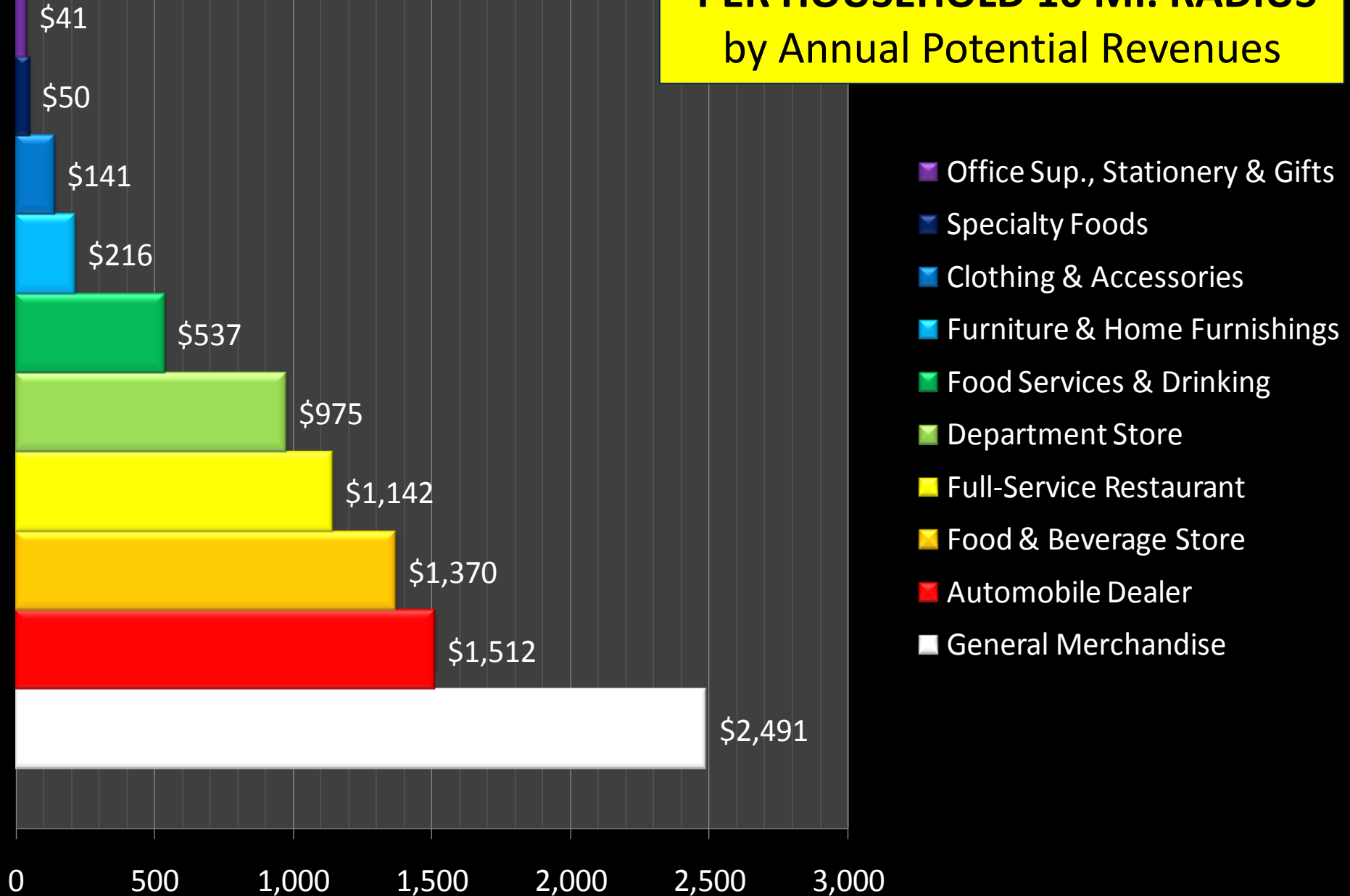
- Office Sup., Stationery & Gifts
- Specialty Foods
- Clothing & Accessories
- Furniture & Home Furnishings
- Food Services & Drinking
- Department Store
- Full-Service Restaurant
- Food & Beverage Store
- Automobile Dealer
- General Merchandise



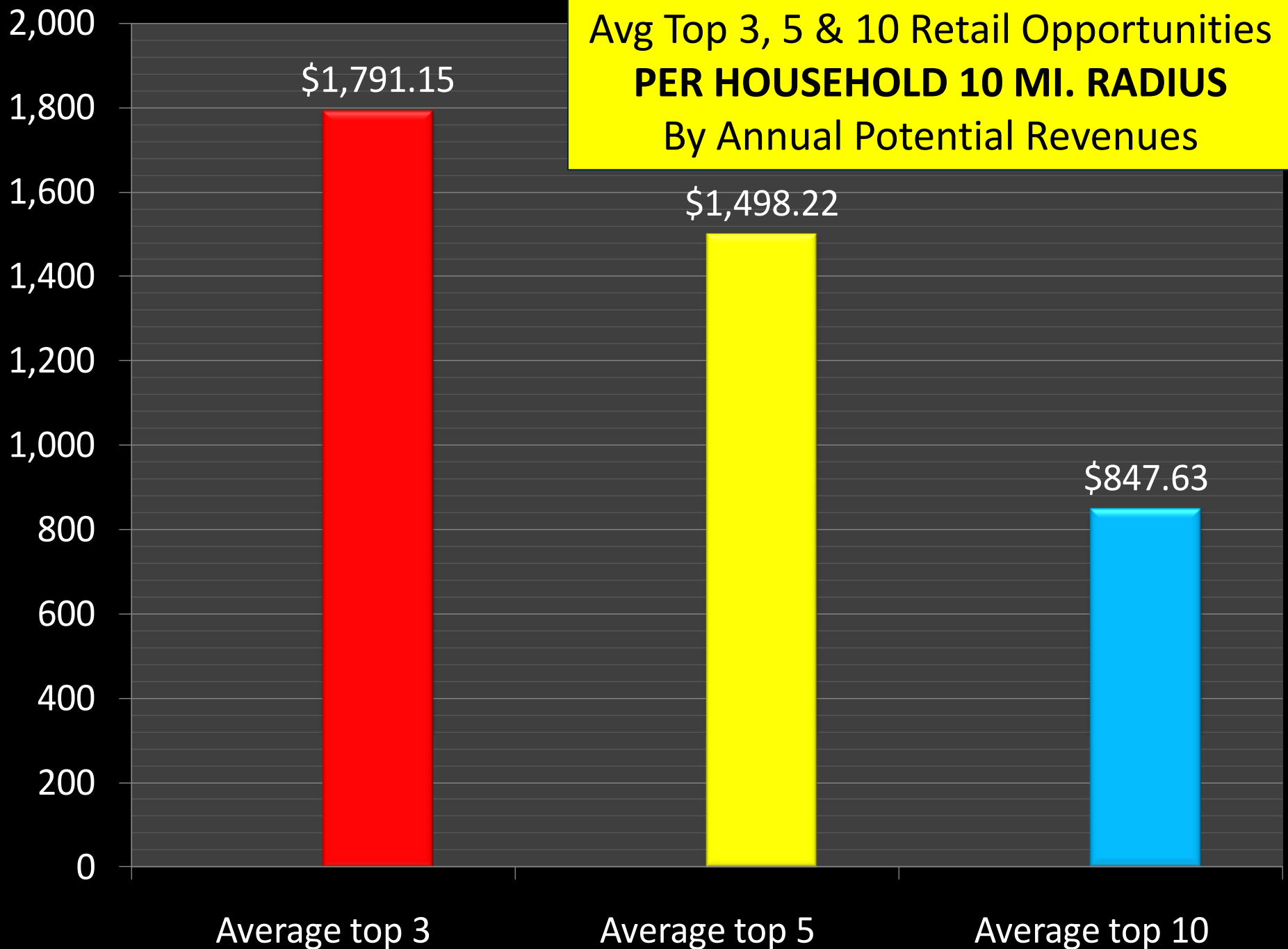
Top 10 Retail Gap Table PER HOUSEHOLD 10 MI. RADIUS by Annual Potential Revenues		
Rank	Category	Annual Potential Revenues
1	General Merchandise	2,491
2	Automobile Dealer	1,512
3	Food & Beverage Store	1,370
4	Full-Service Restaurant	1,142
5	Department Store	975
6	Food Services & Drinking	537
7	Furniture & Home Furnishings	216
8	Clothing & Accessories	141
9	Specialty Foods	50
10	Office Sup., Stationery & Gifts	41
Average top 3		1,791
Average top 5		1,498
Average top 10		848



# Top 10 Retail Gap Chart PER HOUSEHOLD 10 MI. RADIUS by Annual Potential Revenues



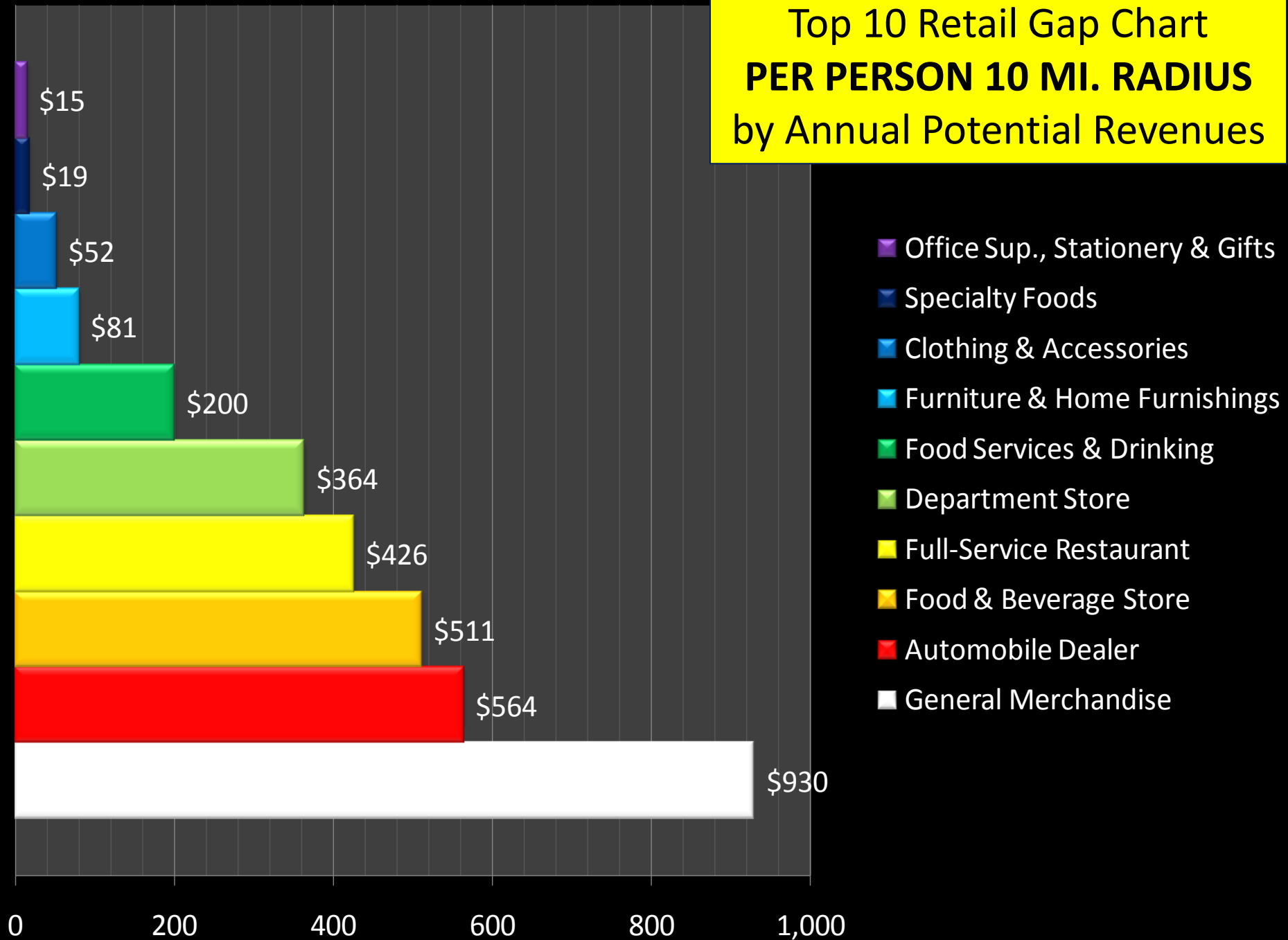
Avg Top 3, 5 & 10 Retail Opportunities  
**PER HOUSEHOLD 10 MI. RADIUS**  
By Annual Potential Revenues





Top 10 Retail Gap Table PER PERSON 10 MI. RADIUS by Annual Potential Revenues in Zip Code		
Rank	Category	Annual Potential Revenues
1	General Merchandise	\$ 929.60
2	Automobile Dealer	\$ 564.00
3	Food & Beverage Store	\$ 511.31
4	Full-Service Restaurant	\$ 426.23
5	Department Store	\$ 363.89
6	Food Services & Drinking	\$ 200.48
7	Furniture & Home Furnishings	\$ 80.64
8	Clothing & Accessories	\$ 52.50
9	Specialty Foods	\$ 18.60
10	Office Sup., Stationery & Gifts	\$ 15.38
Average top 3		\$ 668.30
Average top 5		\$ 559.01
Average top 10		\$ 316.26

**Top 10 Retail Gap Chart**  
**PER PERSON 10 MI. RADIUS**  
by Annual Potential Revenues





Avg Top 3, 5 & 10 Retail Opportunities  
**PER PERSON 10 MI. RADIUS**  
By Annual Potential Revenues

