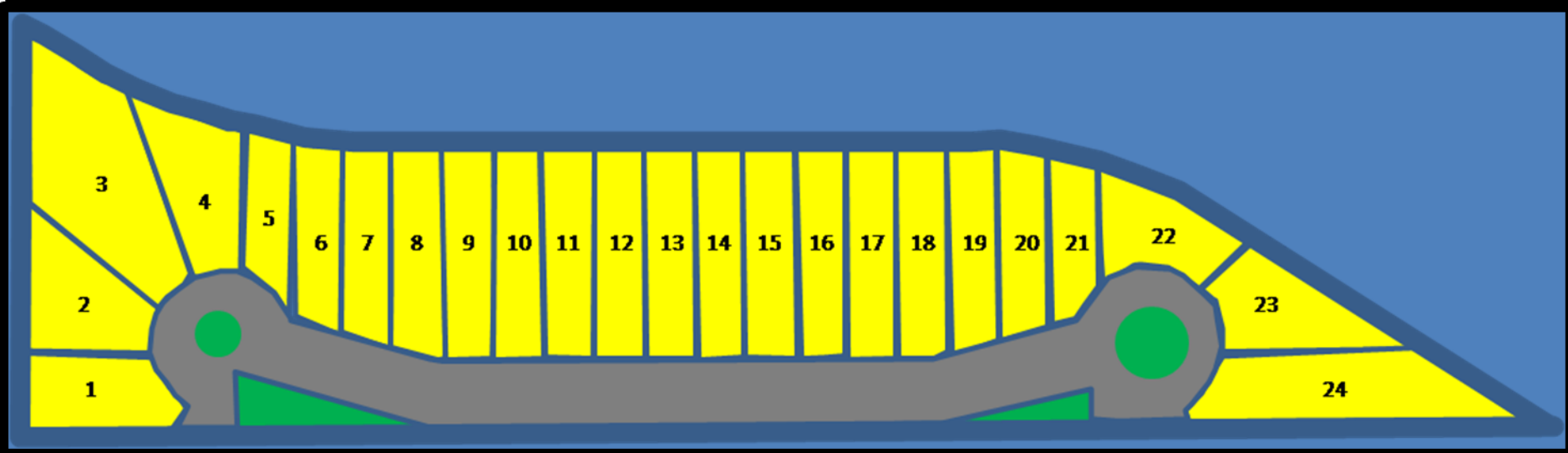


•12 lots with minimum 8K SF
Derived from SIA Engineering, Inc. site plan for 24 lots (below)



Rendering of SIA Engineering, Inc. site plan
for 24 lots with minimum 4K SF lots



~ 4.364 usable acres

20' electrical

17' electric, gas, telephone, CATV & sanitary sewer

16' sanitary sewer

12' electric, gas, telephone, CATV, sanitary sewer & access

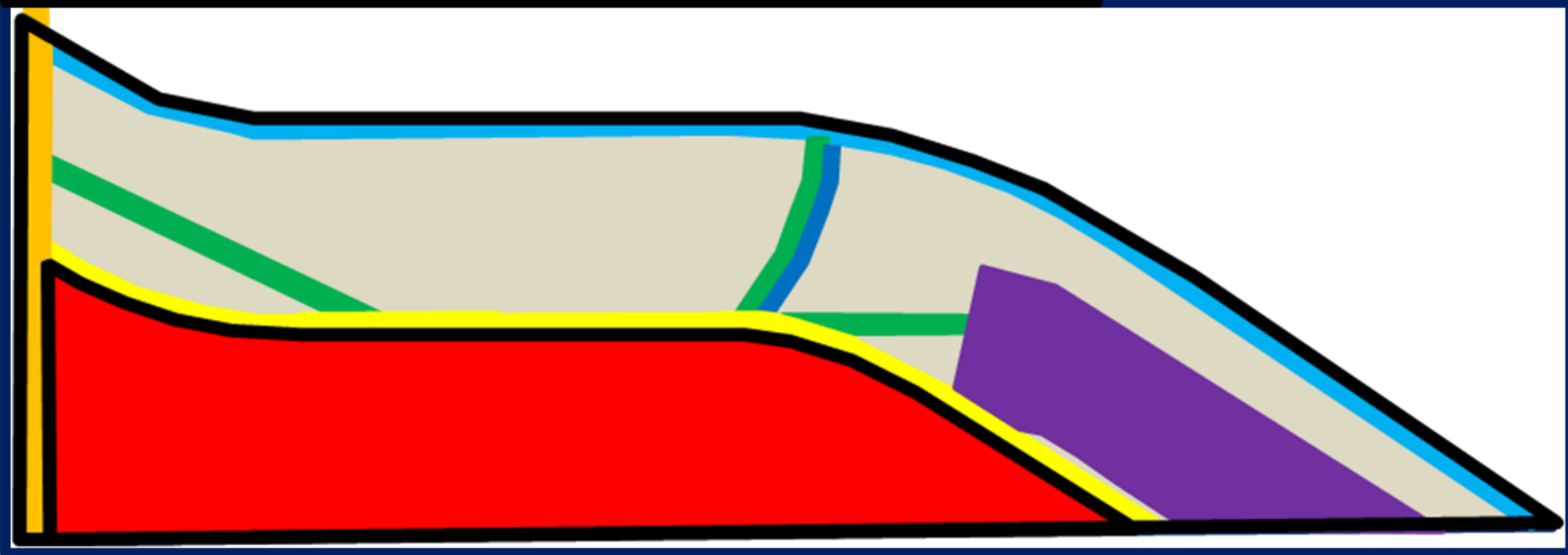
12' telephone

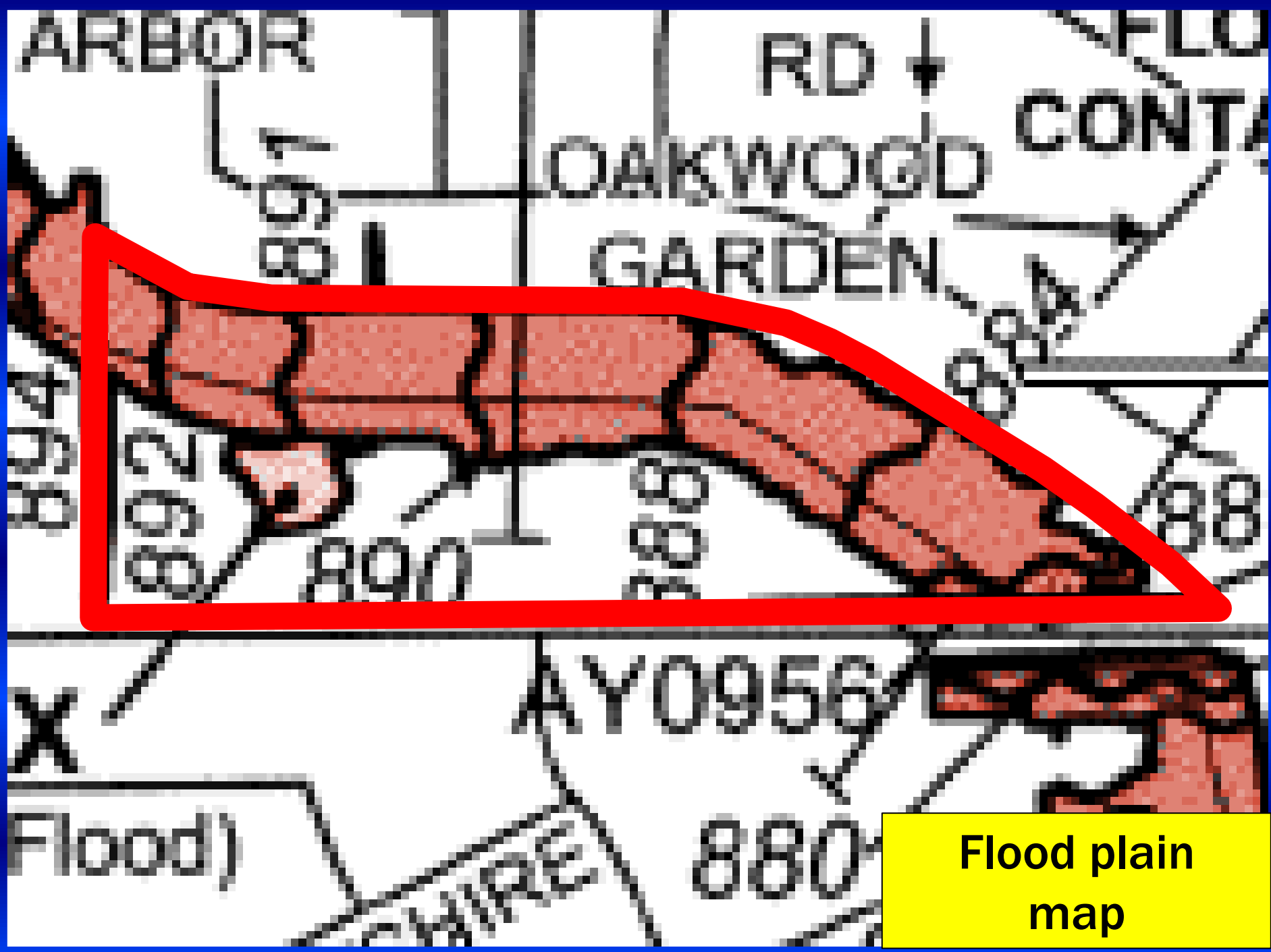
Drainage & sanitary sewer

~ 6.385 unusable acres including easements

Easements,
net usable acres*
and
net unusable
acres*

*Estimates by
CBC Southwest





Flood plain
map