



# GREAT SOUTHERN Land

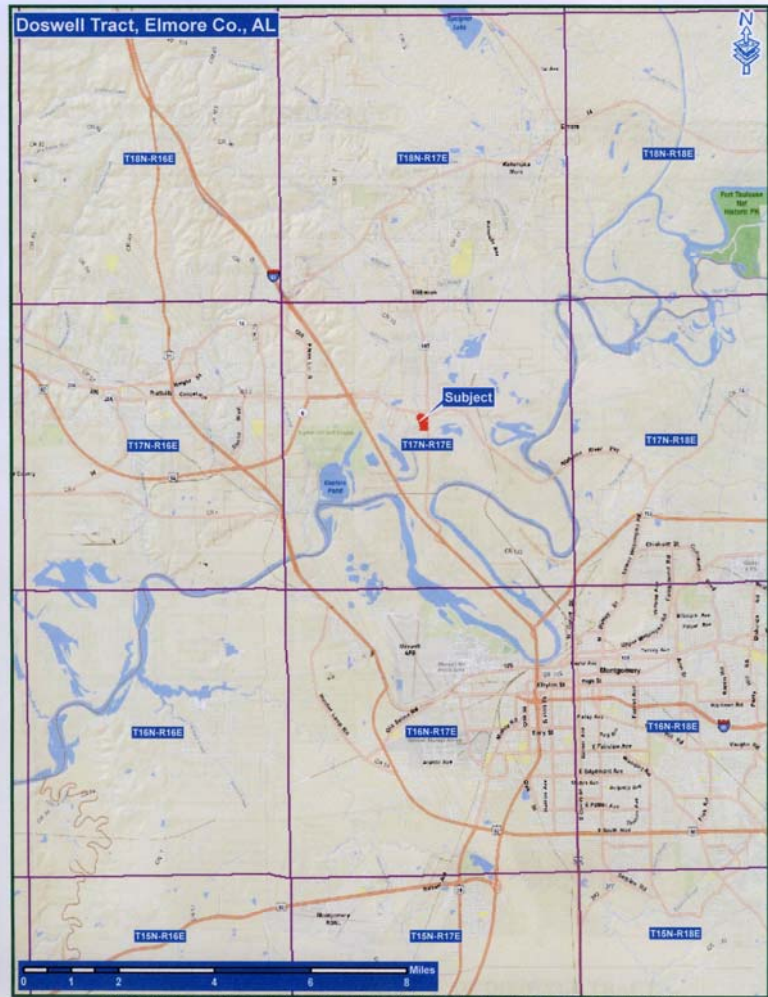


FIGURE 1. GENERAL LOCATION MAP OF DOSWELL TRACT

[www.GreatSouthernLand.com](http://www.GreatSouthernLand.com)

If you are looking for commercial land for sale in Elmore County, this is it! Only a short drive from Montgomery, Prattville or Millbrook, Alabama, the Doswell Tract offers an excellent development opportunity and timberland investment tract.

There is approximately 805 feet of road frontage on the south side of Cobbs Ford Road. There is approximately 375 feet of road frontage above the Goodship Cemetery on Hwy 143 and approximately 505 feet of usable frontage below the cemetery.

This tract consist of 29 acres with about 19 acres in pine timber and 10 acres in hardwood timber.

The intersection of Cobbs Ford Road and Hwy 143 is one of the busiest traveled intersections in central Alabama.

**Doswell Commercial Tract #29-001**  
**29+/- Acres in Elmore County, AL**  
**Offered for \$450,000**



Great  
Southern  
Land

For a tour or more information call:

Mike Hutcheson, Listing Agent

334-682-9825

334-410-2289 cell

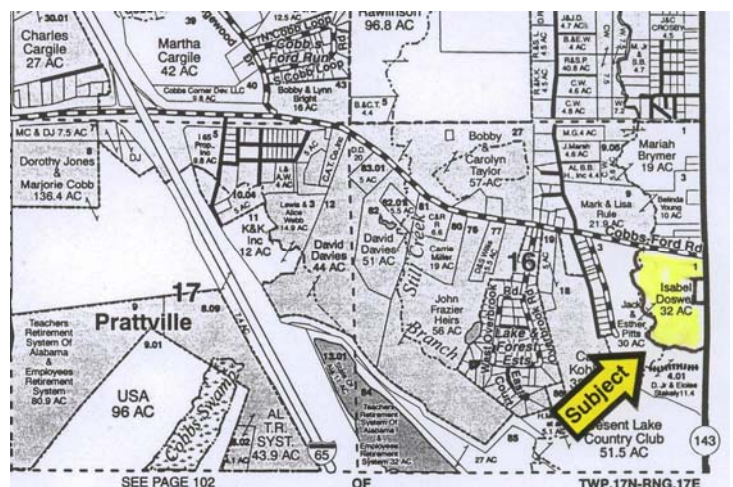
[Hutcheson@wilmontimberlands.com](mailto:Hutcheson@wilmontimberlands.com)

Don Donald, ALC, Broker

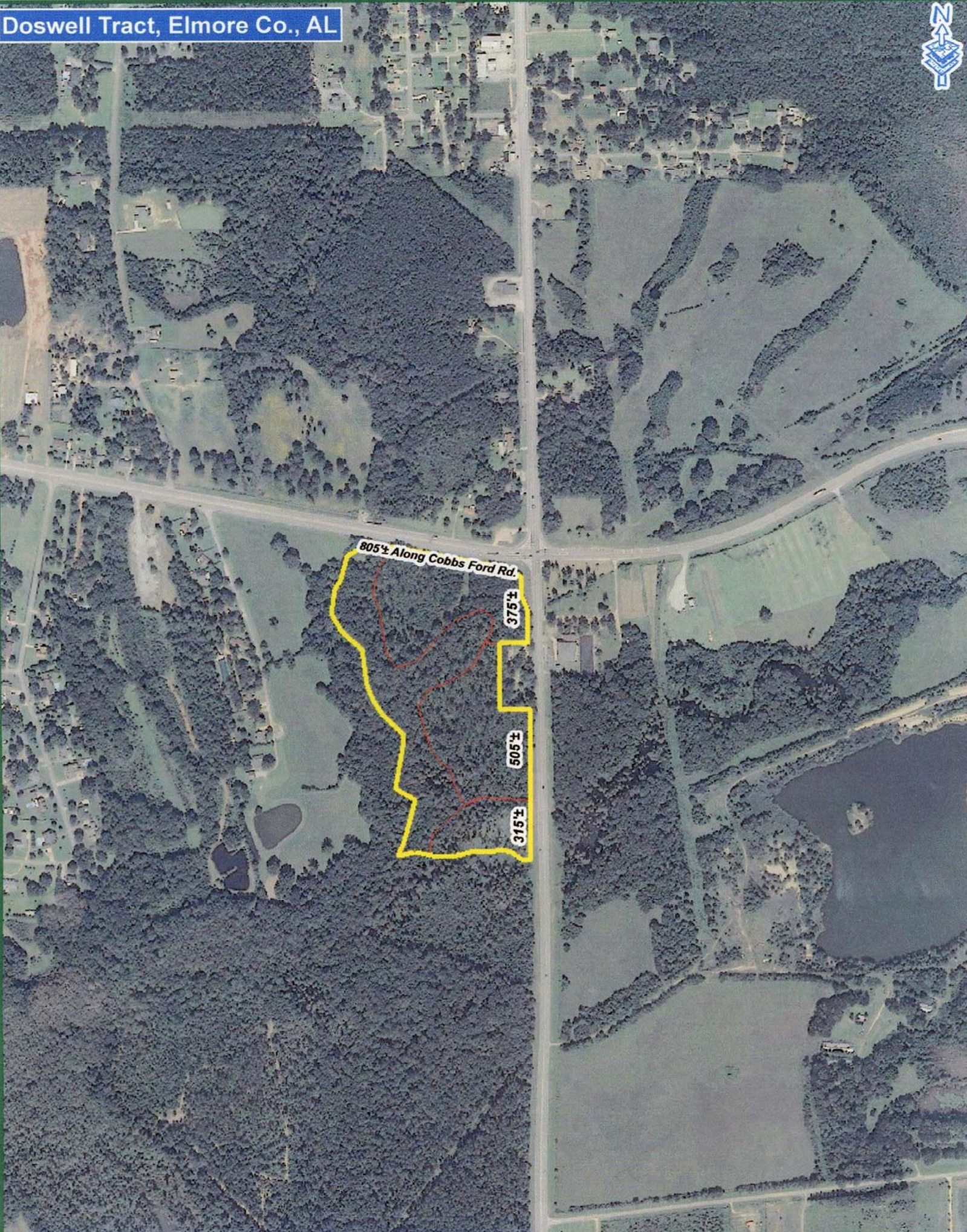
334-682-9825 or 1-866-788-0759

334-419-2874 cell

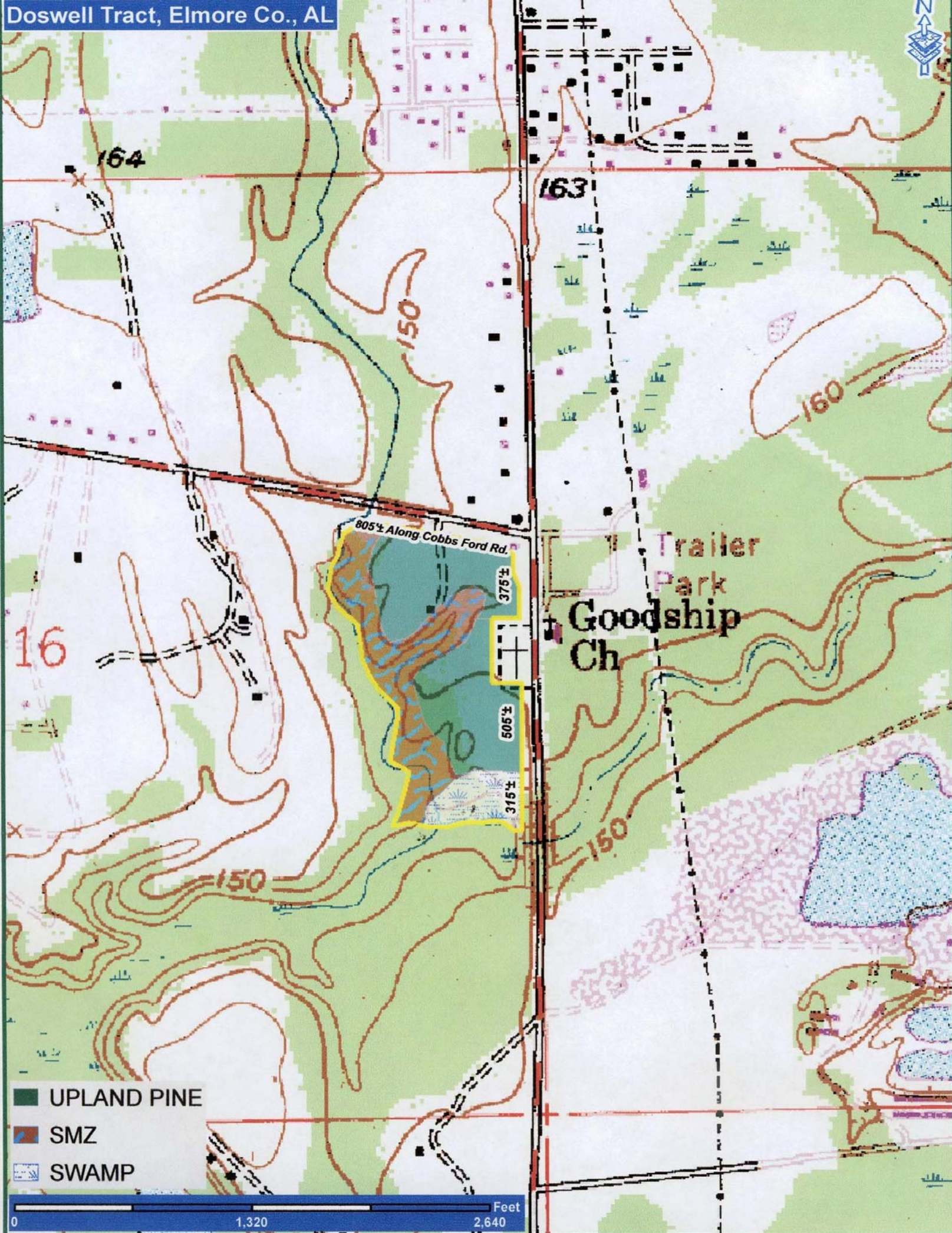
[grsouth@frontiernet.net](mailto:grsouth@frontiernet.net)















**Top Left:** Hardwood Timber on Cobbs Ford



**Top Right:** Pine Timber on Cobbs Ford

**Middle Left:** Cobbs Ford Road

**Middle Right:** Creek, West Line



**Bottom Right:** Intersection at Cobbs Ford and Hwy 143

**Bottom Left:** Hwy 143

