

Stage Line



\$450,000

3 Bedrooms, 1.75 Bathrooms

**21060 Seven Springs Dairy Rd., E.
Creston, Washington 99117**

Presented By:

John H. Sloan

509-721-1160

johnsloan@tb.com

www.tourfactory.com/645376

**COLDWELL
BANKER**

TOMLINSON



Information supplied by sellers. Deemed reliable, but not guaranteed.

Kitchen

Kitchen area, eat space in kitchen, small desk area, all appliances stay with the home. Very large and open area to the family room.



Garage

This is the 2+ car garage. 2 bays and work shop or storage.



Presented By:

John H. Sloan
509-721-1160
johnsloan@tb.com
www.tourfactory.com/645376

**COLDWELL
BANKER**

TOMLINSON



Shop

Shop is 40x80 concrete floor in 1/2 or it, dry well to wash and service vehicles, wood stove for heat. Over head door with opener. 40' open bay storage.



Family Room

Just off the kitchen is the very comfortable family room, wood stove insert, heats the whole house. Also has an electric furnace and central air conditioning, heat pump.

Presented By:

John H. Sloan
509-721-1160
johnsloan@tb.com
www.tourfactory.com/645376

**COLDWELL
BANKER**

TOMLINSON



Pasture

This is some of the pasture ground, a portion of which is sub-irriaged in the spring.



Loafing Barn

Corrals and loafing shed, cattle chutes, etc.

Presented By:

John H. Sloan

509-721-1160

johnsloan@tb.com

www.tourfactory.com/645376

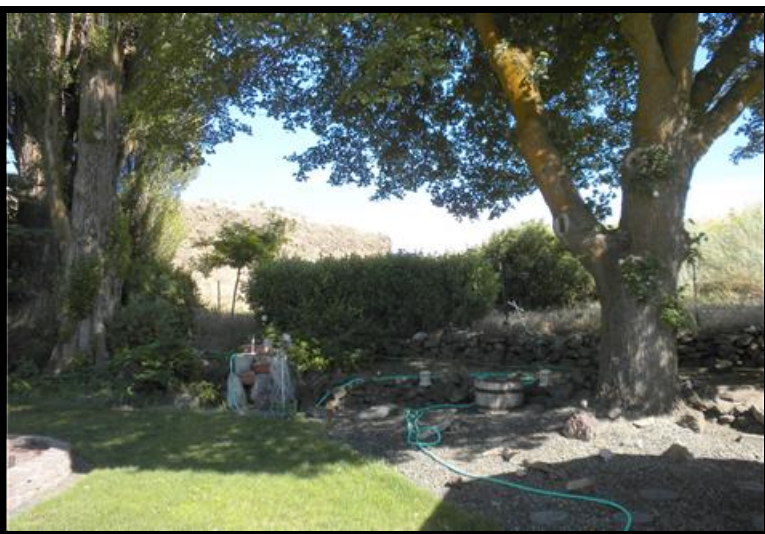
**COLDWELL
BANKER**

TOMLINSON



Mini Barn

Mini Barn, behind the home and well shed and storage shed. Well is 10 years old and 60 gpm.



Back Yard

Back yard is very interesting from the over 100 year old trees, to the fountain and rock gardens.

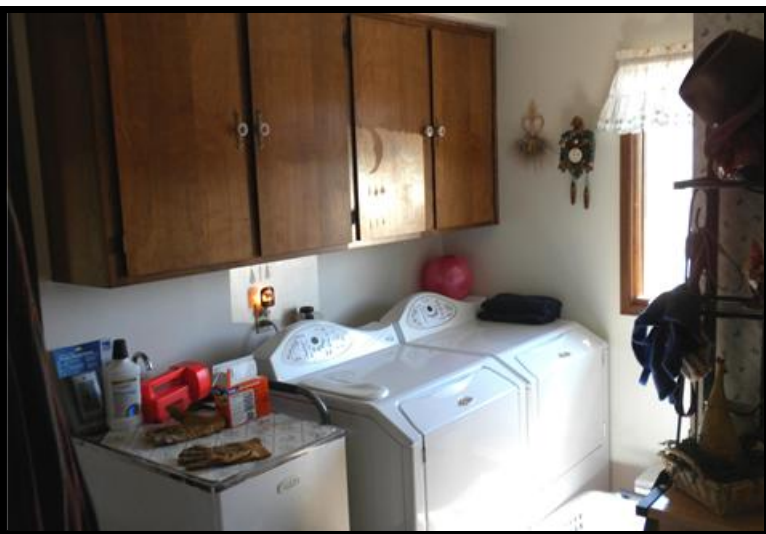
Presented By:

John H. Sloan
509-721-1160
johnsloan@tb.com
www.tourfactory.com/645376



East Side Yard

View of the east side of the home site.



Laundry

Large laundry area, with builtins, and 3/4 shower, nice mud room, just off the back porch!

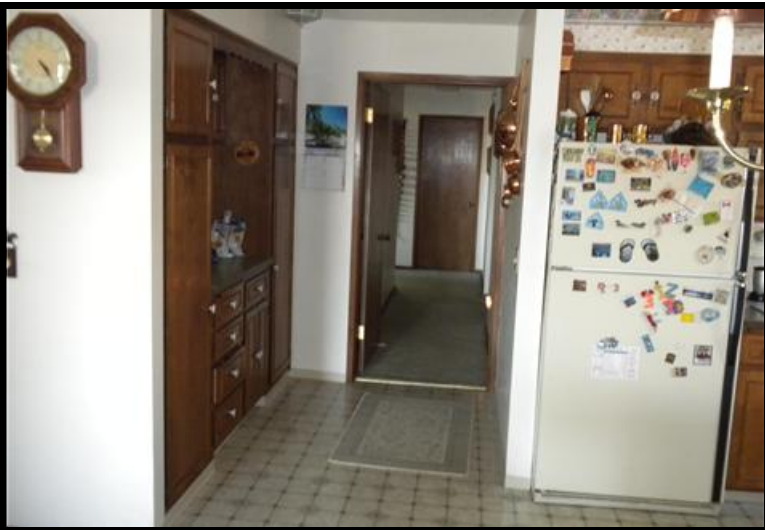
Presented By:

John H. Sloan
509-721-1160
johnsloan@tb.com
www.tourfactory.com/645376



Bathroom

3/4 Bathroom, and mud room from back door entrance.



Pantry

Hall way leading to the 3 bedrooms and bath. Pantry and other builtins.

Presented By:

John H. Sloan

509-721-1160

johnsloan@tb.com

www.tourfactory.com/645376

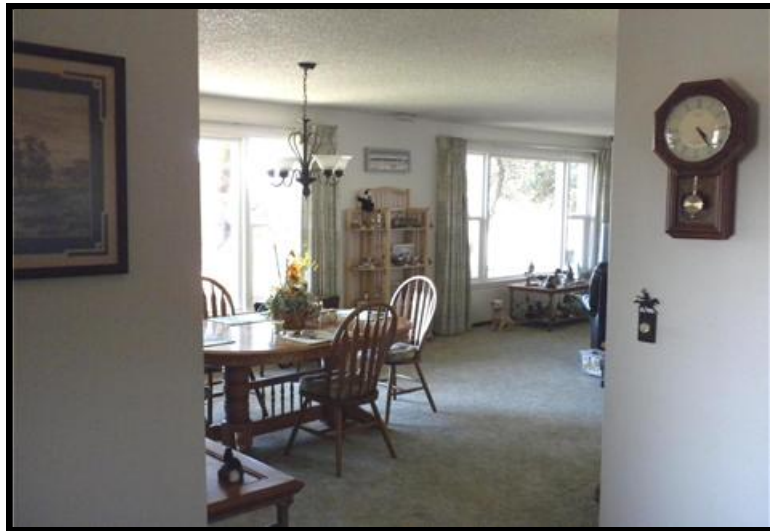
**COLDWELL
BANKER**

TOMLINSON



Dining and Great Room

Formal Dining and Great Room area.



Great Room

Large living and Dining Rooms.

Presented By:

John H. Sloan

509-721-1160

johnsloan@tb.com

www.tourfactory.com/645376



Office

This room is just inside the front door. As you can see it also has numerous built-in cabinets and desk area.



Guest Room

Guest Bedroom. All of the bedrooms in this home are good size.

Presented By:

John H. Sloan

509-721-1160

johnsloan@tb.com

www.tourfactory.com/645376

**COLDWELL
BANKER**

TOMLINSON



Bathroom

The main bathroom has lowered counters for wheel chair access.



Bathroom

Main bathroom, also in this area is a make-up counter and of course tons of storage!

Presented By:

John H. Sloan

509-721-1160

johnsloan@tb.com

www.tourfactory.com/645376

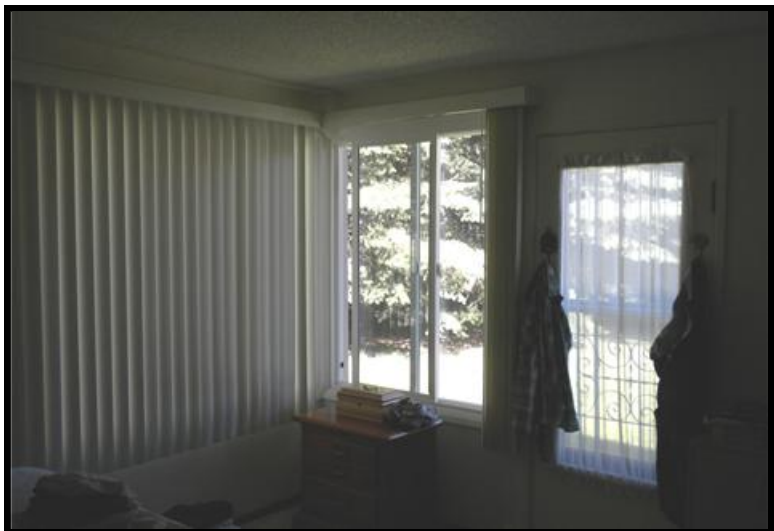
**COLDWELL
BANKER**

TOMLINSON



Master Bedroom

Master Bedroom, has its own outside entrance to the back yard. Almost all of the windows have been replaced with double pane vinyl windows.



Master Bedroom

Another view of the master bedroom.

Presented By:

John H. Sloan
509-721-1160
johnsloan@tb.com
www.tourfactory.com/645376



Garage

Garage area with 2 bays, 2 openers and storage or could be shop area.. Detached from the home.



Pasture

More of the sub-irrigated pasture area just north of the home. Horses don't go with the sale of the home.

Presented By:

John H. Sloan
509-721-1160
johnsloan@tb.com
www.tourfactory.com/645376

**COLDWELL
BANKER**

TOMLINSON



Pasture

Different view of the pasture area with the rock out cropping plateau in the back drop.



Presented By:

John H. Sloan

509-721-1160

johnsloan@tb.com

www.tourfactory.com/645376

**COLDWELL
BANKER**

TOMLINSON

