

# River Creek Land Sales

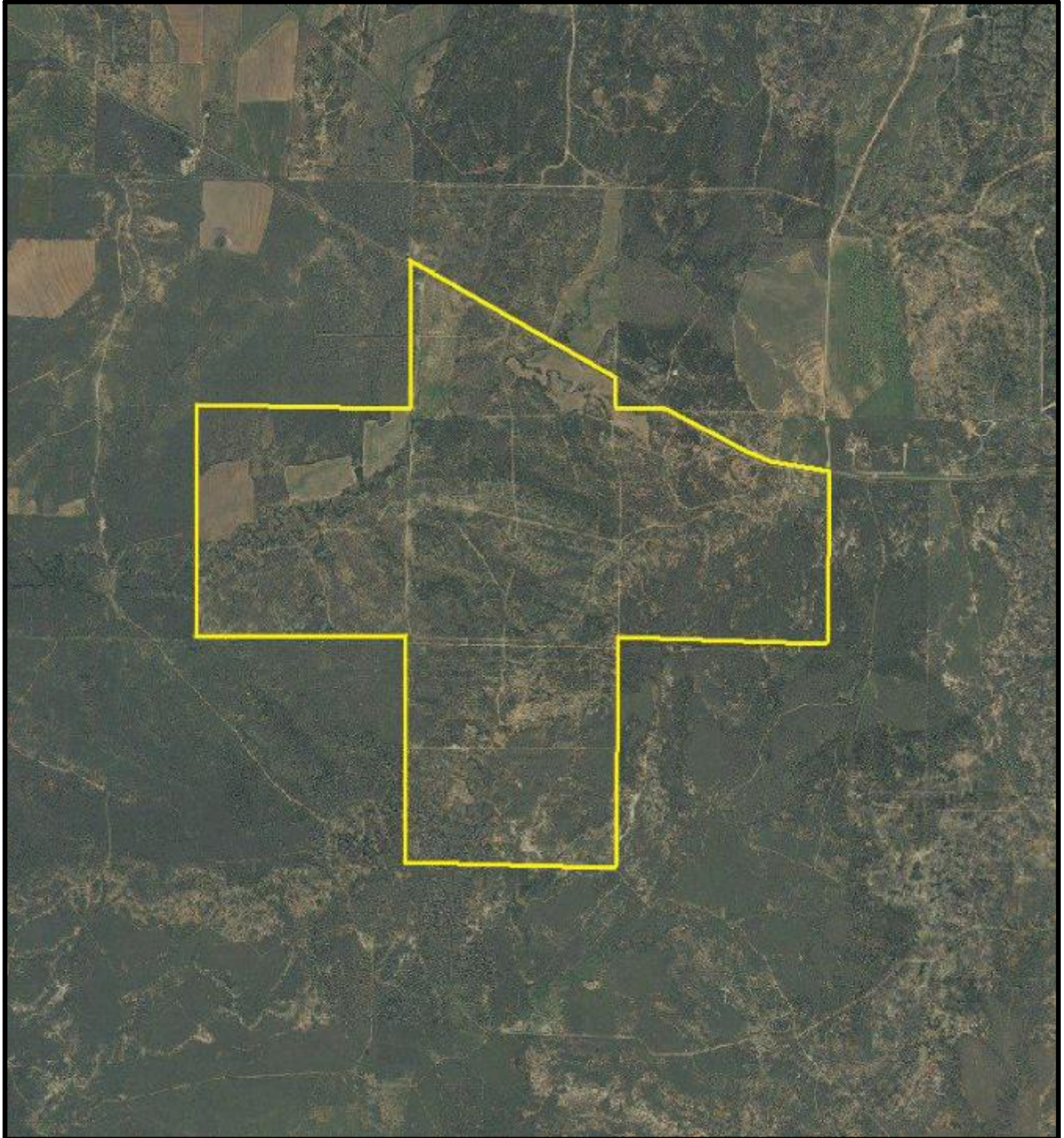
A TEXAS AND OKLAHOMA LAND COMPANY

## AERIAL MAP

SIX MILE HILL RANCH

2745 +/- ACRES

FOARD COUNTY, TEXAS



\* Borders as drawn are approximate and must be verified by the buyer and/or appropriate professionals.





# River Creek Land Sales

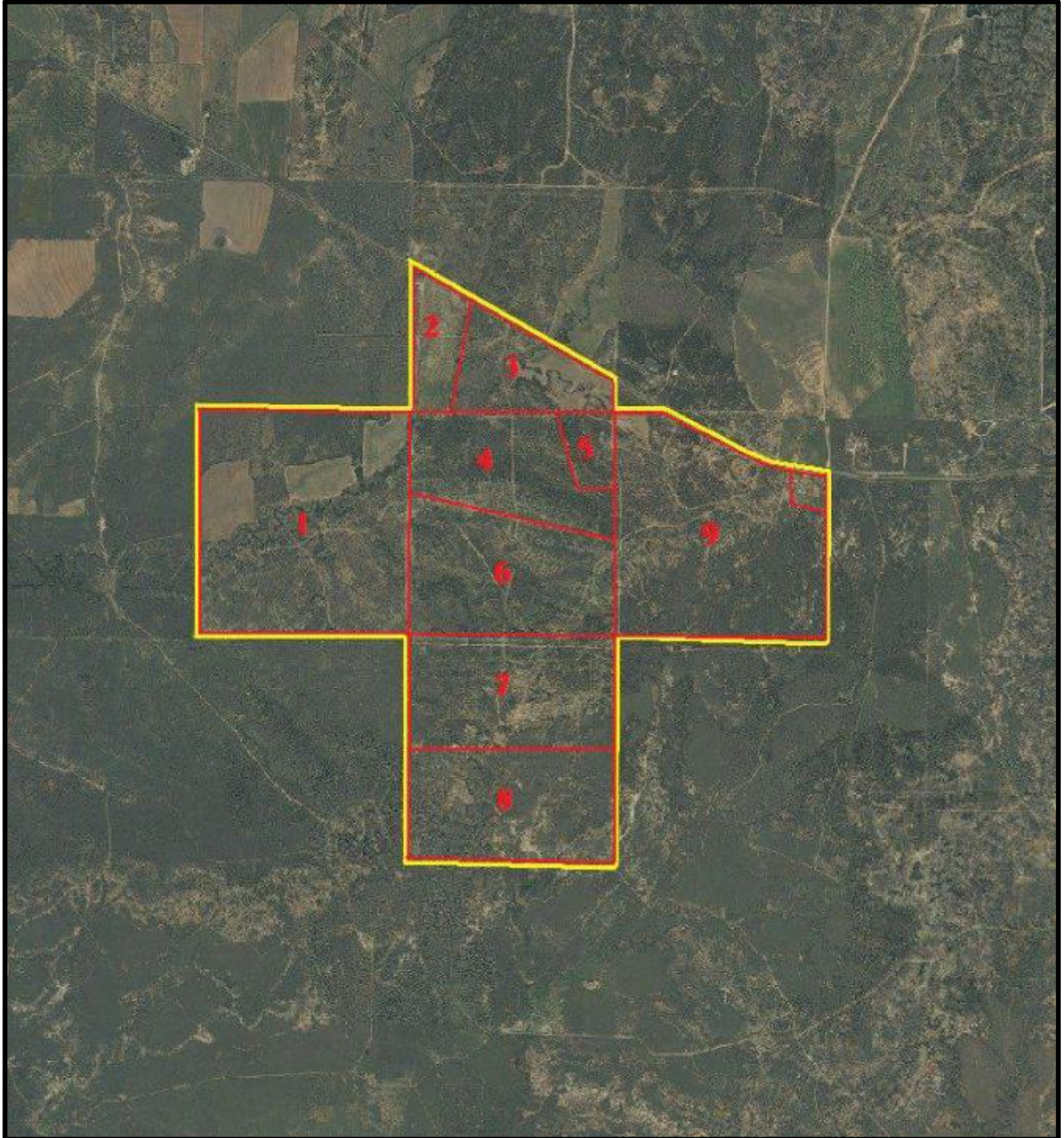
A TEXAS AND OKLAHOMA LAND COMPANY

## PASTURES AND FENCING

SIX MILE HILL RANCH

2745 +/- ACRES

FOARD COUNTY, TEXAS



\* Borders as drawn are approximate and must be verified by the buyer and/or appropriate professionals.





# River Creek Land Sales

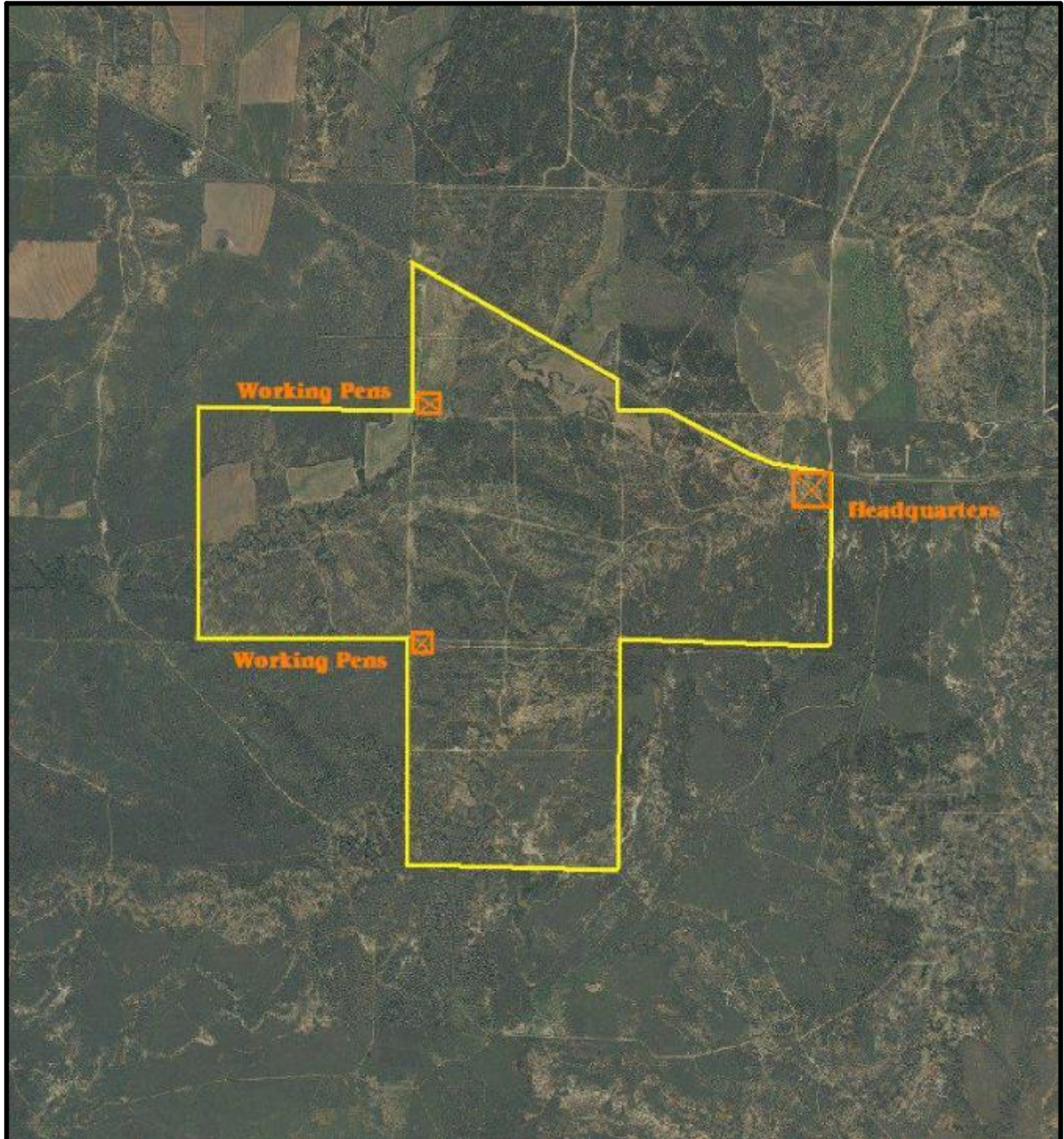
A TEXAS AND OKLAHOMA LAND COMPANY

## WORKING PENS - TRAPS

SIX MILE HILL RANCH

2745 +/- ACRES

FOARD COUNTY, TEXAS



\* Borders as drawn are approximate and must be verified by the buyer and/or appropriate professionals.





# River Creek Land Sales

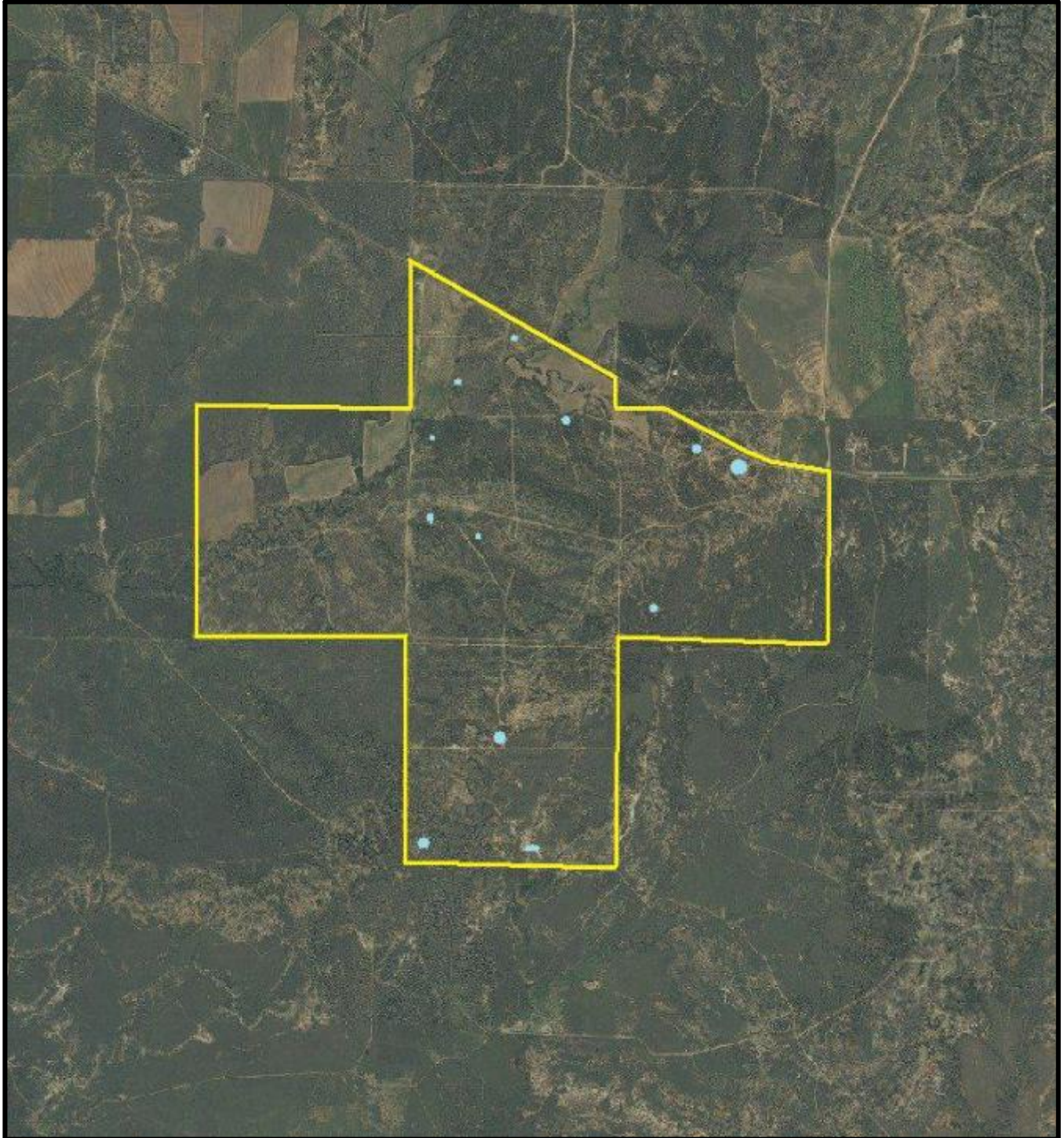
A TEXAS AND OKLAHOMA LAND COMPANY

## PONDS AND WATER TANKS

SIX MILE HILL RANCH

2745 +/- ACRES

FOARD COUNTY, TEXAS



\* Borders as drawn are approximate and must be verified by the buyer and/or appropriate professionals.





# River Creek Land Sales

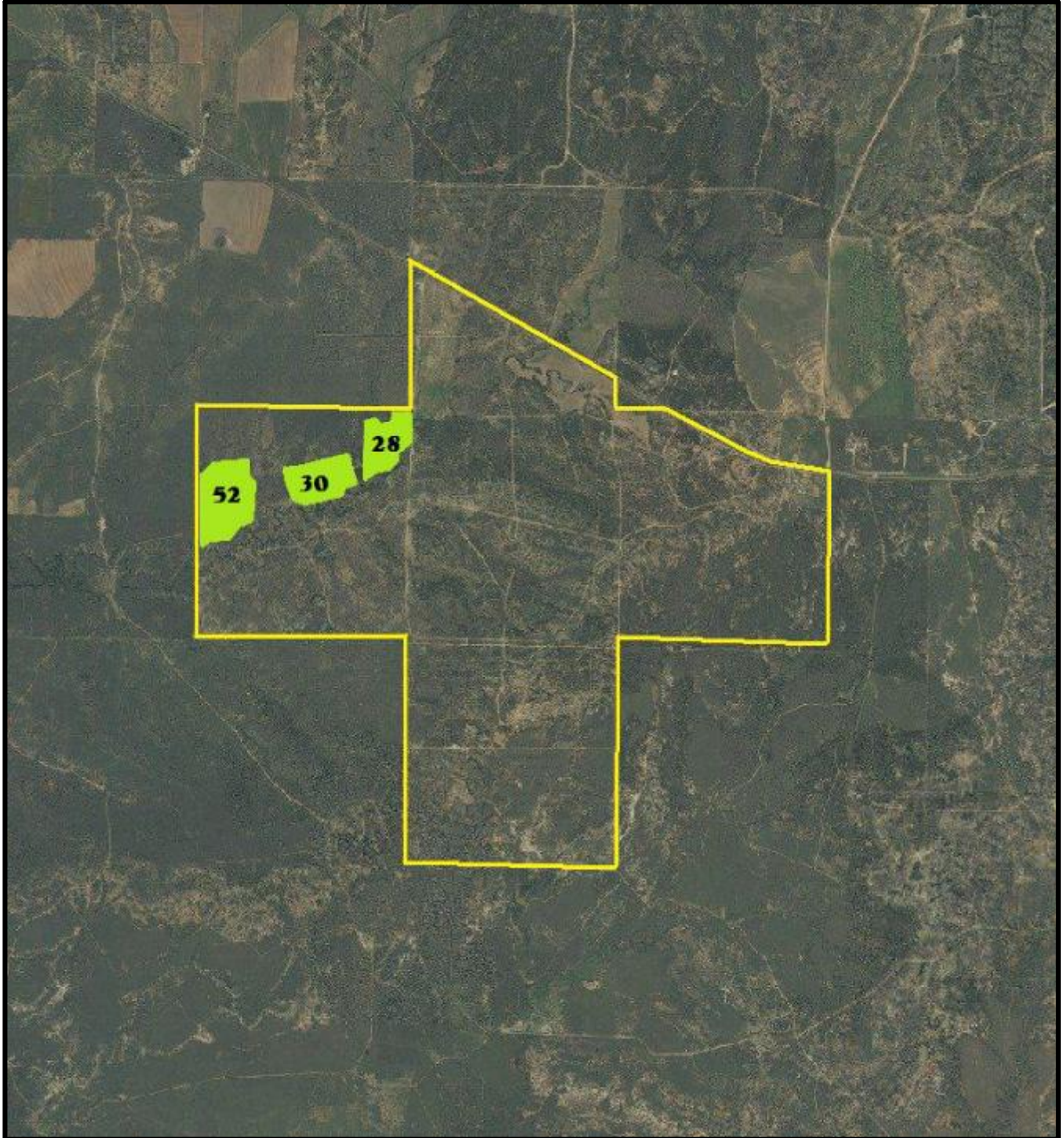
A TEXAS AND OKLAHOMA LAND COMPANY

## CULTIVATED FIELDS

SIX MILE HILL RANCH

2745 +/- ACRES

FOARD COUNTY, TEXAS



\* Borders as drawn are approximate and must be verified by the buyer and/or appropriate professionals.





# River Creek Land Sales

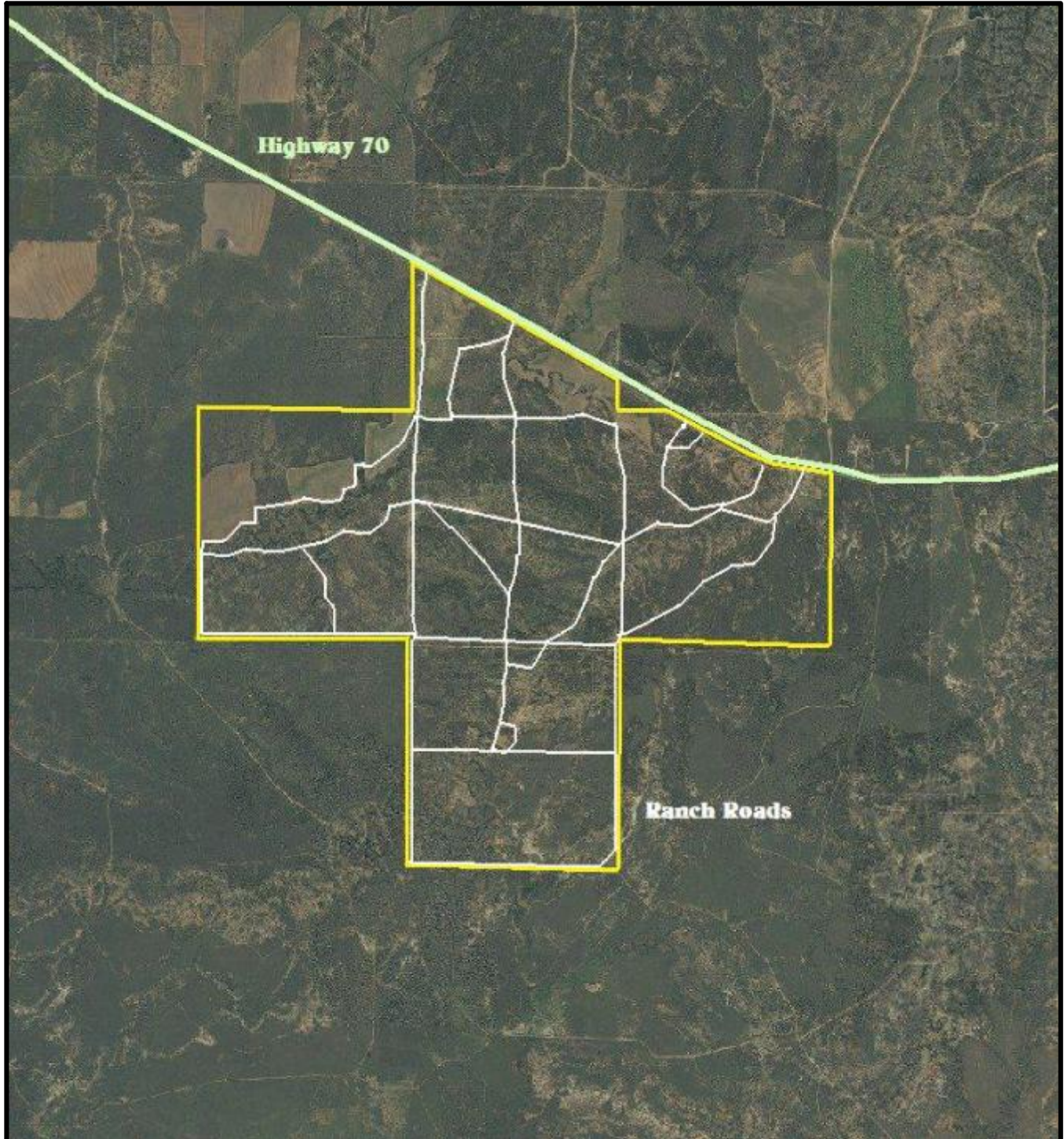
A TEXAS AND OKLAHOMA LAND COMPANY

## ROAD SYSTEM

SIX MILE HILL RANCH

2745 +/- ACRES

FOARD COUNTY, TEXAS



\* Borders as drawn are approximate and must be verified by the buyer and/or appropriate professionals.





# River Creek Land Sales

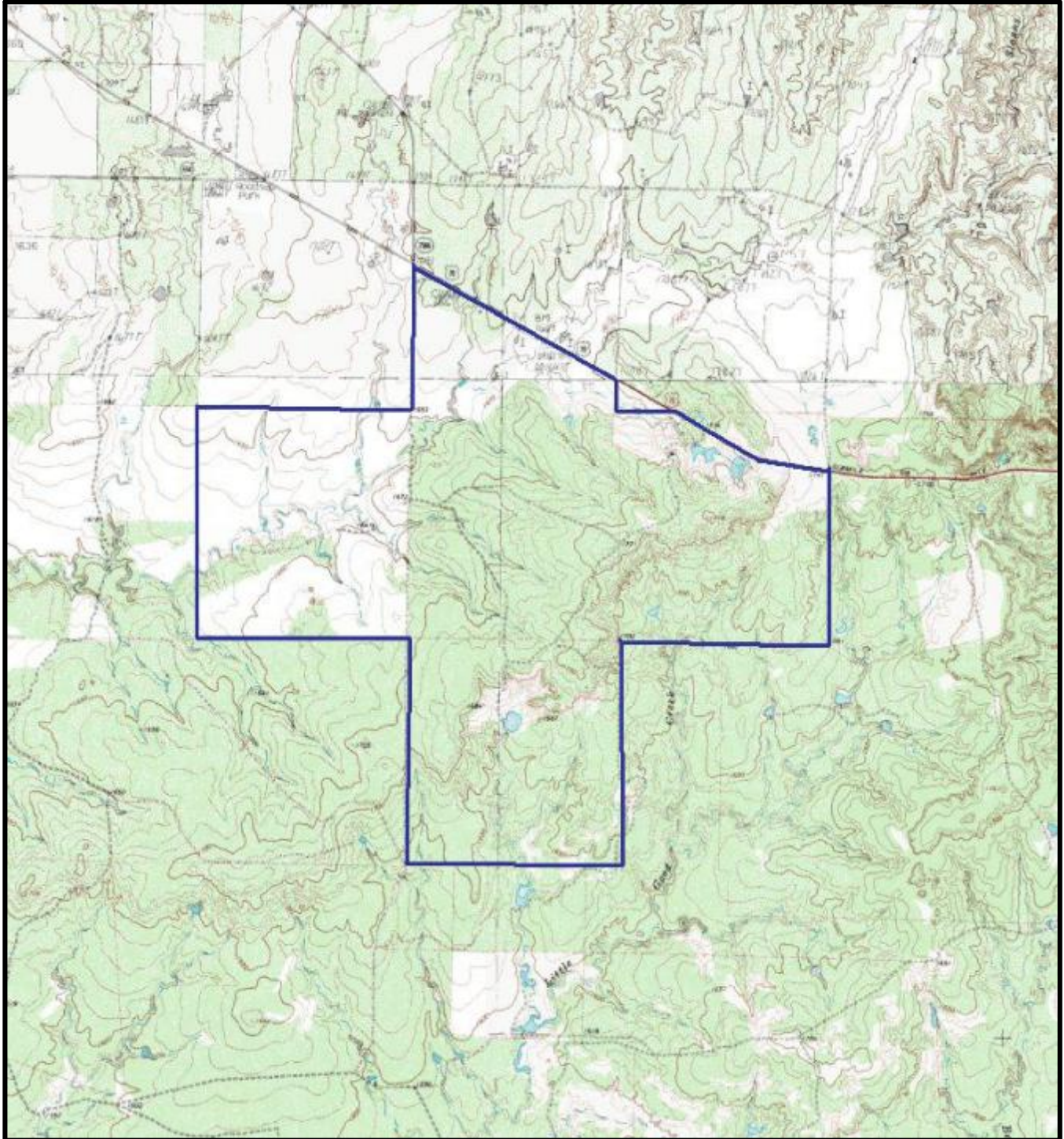
A TEXAS AND OKLAHOMA LAND COMPANY

## TOPO MAP

SIX MILE HILL RANCH

2745 +/- ACRES

FOARD COUNTY, TEXAS



\* Borders as drawn are approximate and must be verified by the buyer and/or appropriate professionals.

