

FOR SALE

Sand Creek Twp., Jennings Co., IN

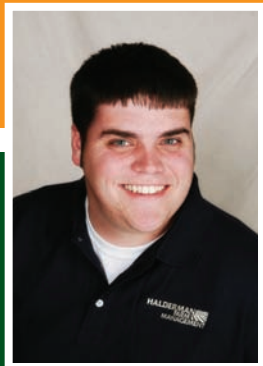


105 Total Acres

53.2 Tillable Acres • 51.8 Wooded Acres



Dave Bonnell
Columbus, IN
812.343.4313



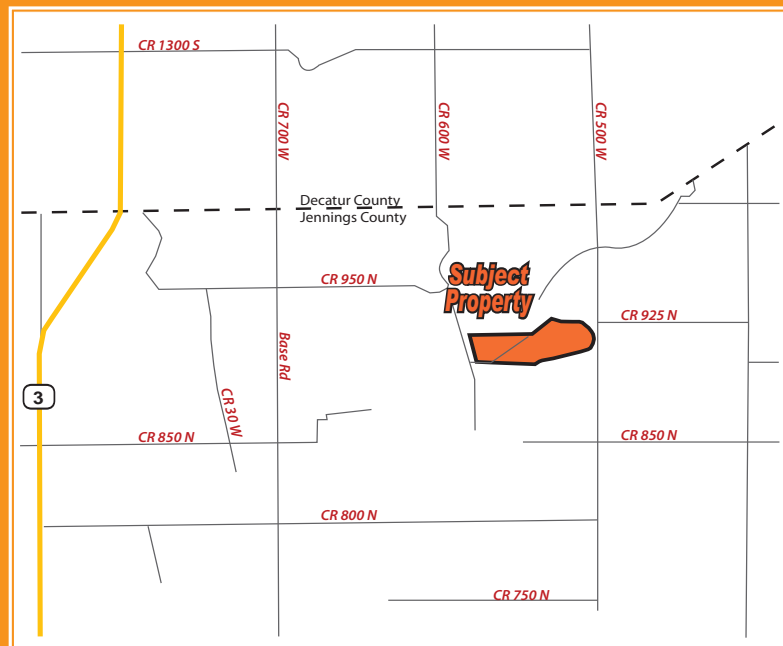
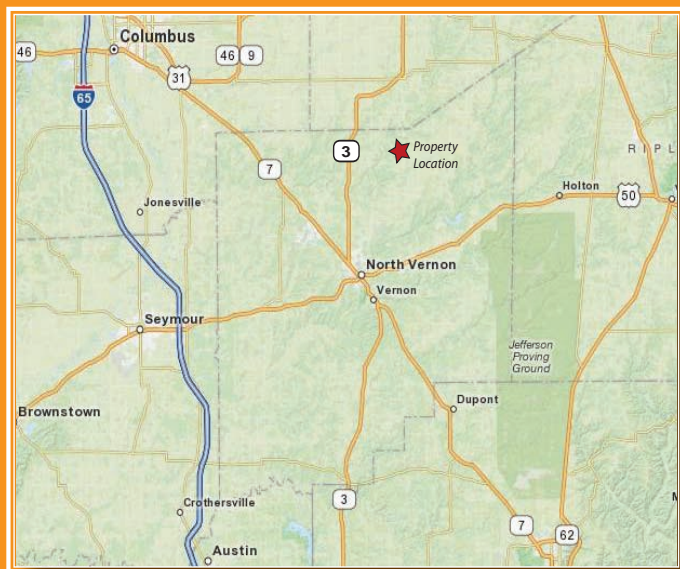
Michael Bonnell
Columbus, IN
812.343.6036

HALDERMAN
REAL ESTATE
SERVICES

HLS#PDB-10334

800.424.2324 | www.halderman.com

LOCATION & SOILS INFORMATION



Code	Soil Description Fsa borders provided by the Farm Service Agency as of May 23, 2008. Soils data provided by USDA and NRCS.	Acres	Corn	Soybeans
CkIC2	Cincinnati-Nabb silt loams, 2 to 12 percent slopes, eroded	17.3	84	29
HeeE2	Hickory loam, 18 to 25 percent slopes, eroded	15.1	70	25
GccAH	Genesee loam, 0 to 2 percent slopes, frequently flooded, brief duration	11.1	100	35
GmcD3	Grayford silt loam, 12 to 18 percent slopes, severely eroded	8.3	60	21
GmcC2	Grayford silt loam, 6 to 12 percent slopes, eroded	7.6	80	28
RtcB2	Ryker silt loam, 2 to 6 percent slopes, eroded	6.4	113	40
EepB2	Elkinsville silt loam, 2 to 6 percent slopes, eroded	6.4	120	42
CIfA	Cobbssfork silt loam, 0 to 1 percent slopes	5.9	108	38
PbbB2	Parke silt loam, 2 to 6 percent slopes, eroded	5.5	115	40
NaaA	Nabb silt loam, 0 to 2 percent slopes	3.2	98	34
EepC2	Elkinsville silt loam, 6 to 12 percent slopes, eroded	2.9	110	39
GufE2	Grayford-Corydon silt loams, 18 to 25 percent slopes, eroded	2.3	34	12
CkkD3	Cincinnati silt loam, 12 to 18 percent slopes, severely eroded	1.8		
Weighted Average		87.5	30.7	

LOCATION

This property is located 6 miles northeast of North Vernon, Indiana, on CR 1100 E.

PROPERTY

Cropland, Woods and Recreational Uses

SCHOOLS: Jennings Co. Consolidated

TAXES: \$1,358.22

PRICE: \$295,000.



For More
Information
Contact:

Dave Bonnell
Columbus, IN
812.343.4313

Michael Bonnell
Columbus, IN
812.343.6036