

FOR SALE

Rock Creek Twp., Bartholomew Co., IN



132^{+/-} Acres

91^{+/-} Tillable

39^{+/-} Wooded with Stream

2^{+/-} Farmstead



Dave Bonnell
Columbus, IN
812.343.4313



Michael Bonnell
Columbus, IN
812.343.6036

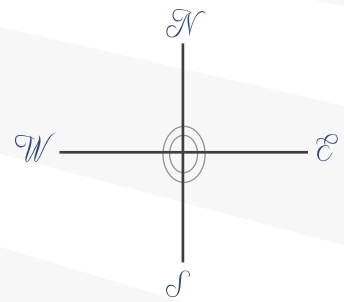
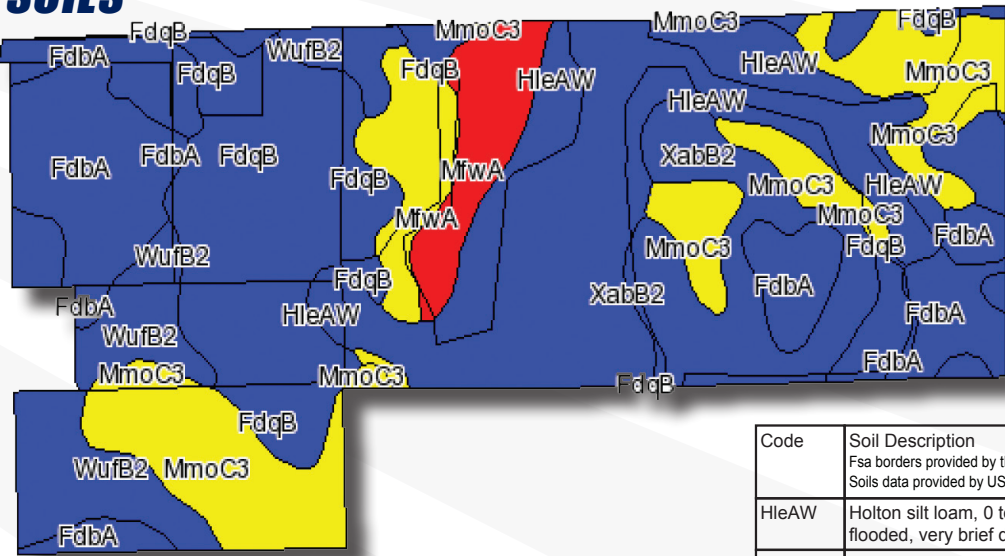
800.424.2324

www.halderman.com

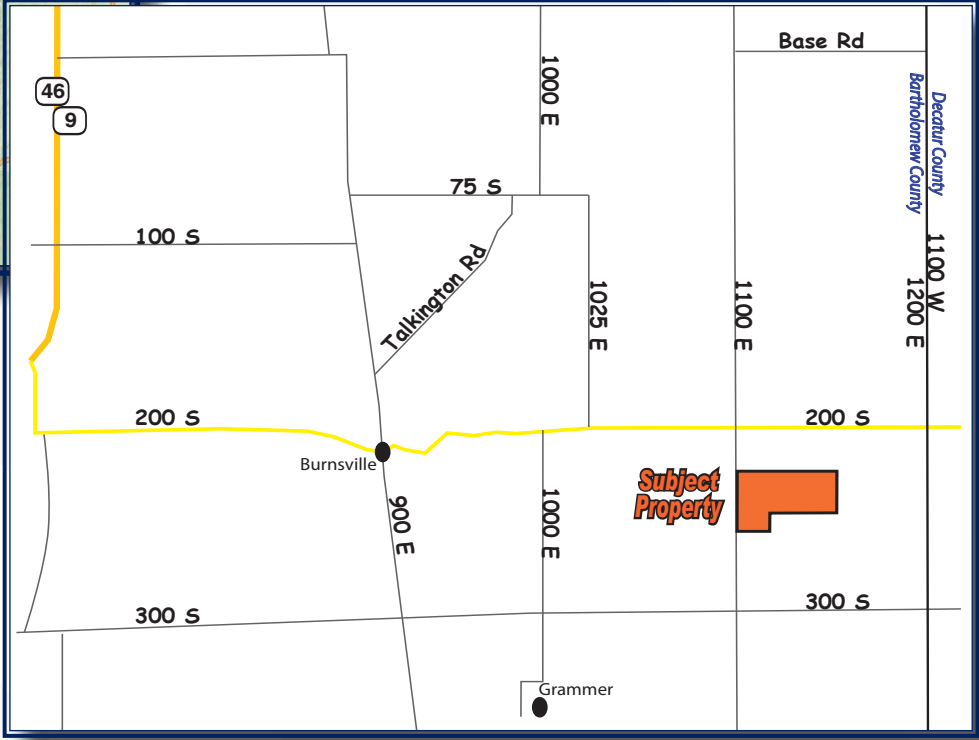
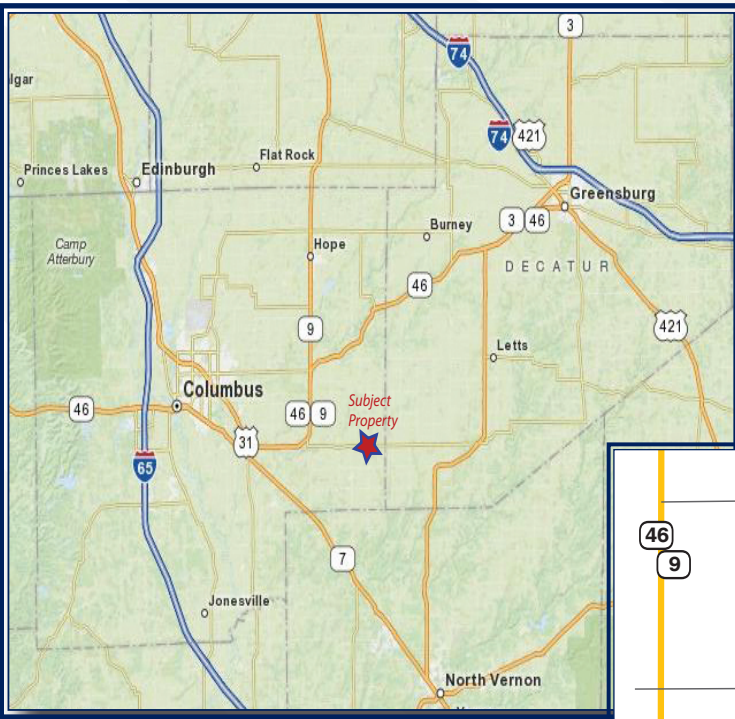
HALDERMAN
REAL ESTATE
SERVICES

HLS#PDB-10333

SOILS



Code	Soil Description <small>Fsa borders provided by the Farm Service Agency as of May 23, 2008. Soils data provided by USDA and NRCS.</small>	Acres	Corn	Pasture	Soybeans
HleAW	Holton silt loam, 0 to 2 percent slopes, occasionally flooded, very brief duration	30.3	105	7	37
FdqB	Fincastle-Xenia silt loams, 2 to 4 percent slopes	25.6	126	8.4	44
MmoC3	Miami clay loam, 6 to 12 percent slopes, severely eroded	24.8	90	6	32
FdbA	Fincastle silt loam, 0 to 2 percent slopes	18.3	130	8.6	46
XabB2	Xenia silt loam, 2 to 6 percent slopes, eroded	14.1	115	7.6	40
WufB2	Williamstown silt loam, 2 to 6 percent slopes, eroded	12.4	106	7	37
MfWA	Martinsville loam, sandy substratum, 0 to 2 percent slopes	5.5	120	8	42
CxA	Cyclone silty clay loam, 0 to 1 percent slopes	5.1	151	10	53
MhuA	McGary silt loam, 0 to 2 percent slopes	0.3	99	6.6	35
Weighted Average			113.1	7.5	39.8



LOCATION

This property is located 2 miles east of Burnsville, Indiana, on CR 1100 E.

PROPERTY

Frame home, barn and crib.

SCHOOLS: Bartholomew Consolidated

TAXES: \$2,039.

PRICE: \$615,000.



Dave Bonnell
Columbus, IN
812.343.4313

Michael Bonnell
Columbus, IN
812.343.6036