

PLAT ABBREVIATIONS

IPF - Iron Pin Found
 DI - Drop Inlet
 S.F. - Square Feet
 OTP - Open Top Pipe
 AC. - Acres
 RB - Rebar
 P/L - Property Line
 R/W - Right of Way
 C/L - Centerline
 FES - Flared End Section
 WDF - Wood Fence line
 OCS - Outlet Control Structure
 N/F - Now or Formerly
 DB - Deed Book
 PB - Plat Book
 PG - Page(s)
 P.O.B. - Point Of Beginning
 P.O.C. - Point Of Commencement
 DE - Drainage Easement
 AE - Access Easement
 PP - Power Pole
 LLL - Land Lot Line
 LL - Land Lot
 B/L - Building Set Back Line
 WM - Water Meter
 OCS - Outlet Control Structure
 WV - Water Valve
 CMP - Corrugated Metal Pipe
 N.T.S. - Not To Scale
 SWCB - Single Wing Catch Basin
 DWCB - Double Wing Catch Basin
 JB - Junction Box
 HW - Headwall
 MH - Manhole
 SSE - Sanitary Sewer Easement
 UE - Utility Easement

MAGNETIC NORTH

BASE ON PB. 37, PG. 1

N/F
 MAXWELL WALKER &
 KATHLEEN M. WALKER
 TMP. 51A/7

DB. 395, PG. 237
 PB. 12, PG. 35

MONUMENTATION LEGEND

- Depicts Iron Pin Set = 1/2" Rebar w/ 1" ORANGE CAP - WHITLEY 2686
- Depicts IPF = 1/2" Rebar unless noted otherwise
 IPF2 = Georgia Power Company's Boundary Marker - 3/8" RB
- Depicts NF = Nail Found
- Depicts Monument Set
- Depicts Monument Found
- Depicts Computed Property Corner

GEORGIA POWER COMPANY
 WALLACE DAM PROJECT - LAKE OCONEE
 APALACHEE RIVER

COMMON AREA
 LAKE ACCESS
 7 SLIP DOCK

RECREATION
 AREA 2
 0.900 AC.

N/F
 DEBORAH M. SAFFOLD
 TMP. 51B/35

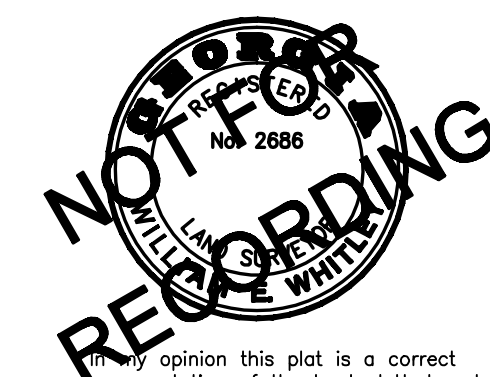
DB. 116, PG. 848
 PB. 11, PG. 22

LOT 79
 N/F
 THOMAS N. SAFFOLD
 TMP. 51B/36

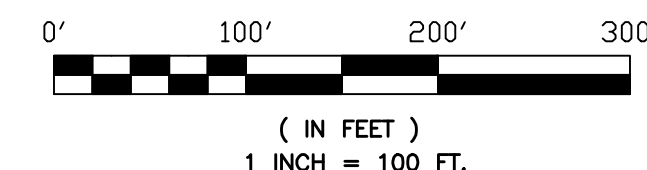
DB. 116, PG. 846
 PB. 11, PG. 22

N/F
 T. N. SAFFOLD
 TMP. 51/65
 DB. 99, PG. 199

This plat is not valid for recording purposes unless Surveyor's Signature appears in original black ink over the stamp.



GRAPHIC SCALE



THIS PLAT IS FOR THE USE OF THE NAME(S)/COMPANY(S) SPECIFIED IN THE TITLE BLOCK ONLY, ANY USE BY A THIRD PARTY IS AT THEIR OWN RISK.

FINAL SUBDIVISION PLAT FOR:
WATERSTONE FARMS
 BEING
PHASE I
 Land Lots 383 & 388 - 4th Land District
 279th (Buckhead) G.M.D.
 Morgan County, Georgia

WHITLEY LAND SURVEYING, INC.
 WILLIAM E. WHITLEY - R.L.S. NO. 2686
 137 WEST WASHINGTON STREET - P.O. BOX 849
 MADISON, GEORGIA 30650 - PHONE: (706) 342-3296

Date: 12-18-07
 Job Number: 2007-084
 Scale: 1" = 100'
 CadTech: B Moore
 Drawing Number: 2007-084-PP.DWG

REVISIONS:

Date: 03-05-08 FINAL REMARKS
 Date: 06-23-08 DIVIDED LOTS 6, 7, & 17 INTO SIX LOTS