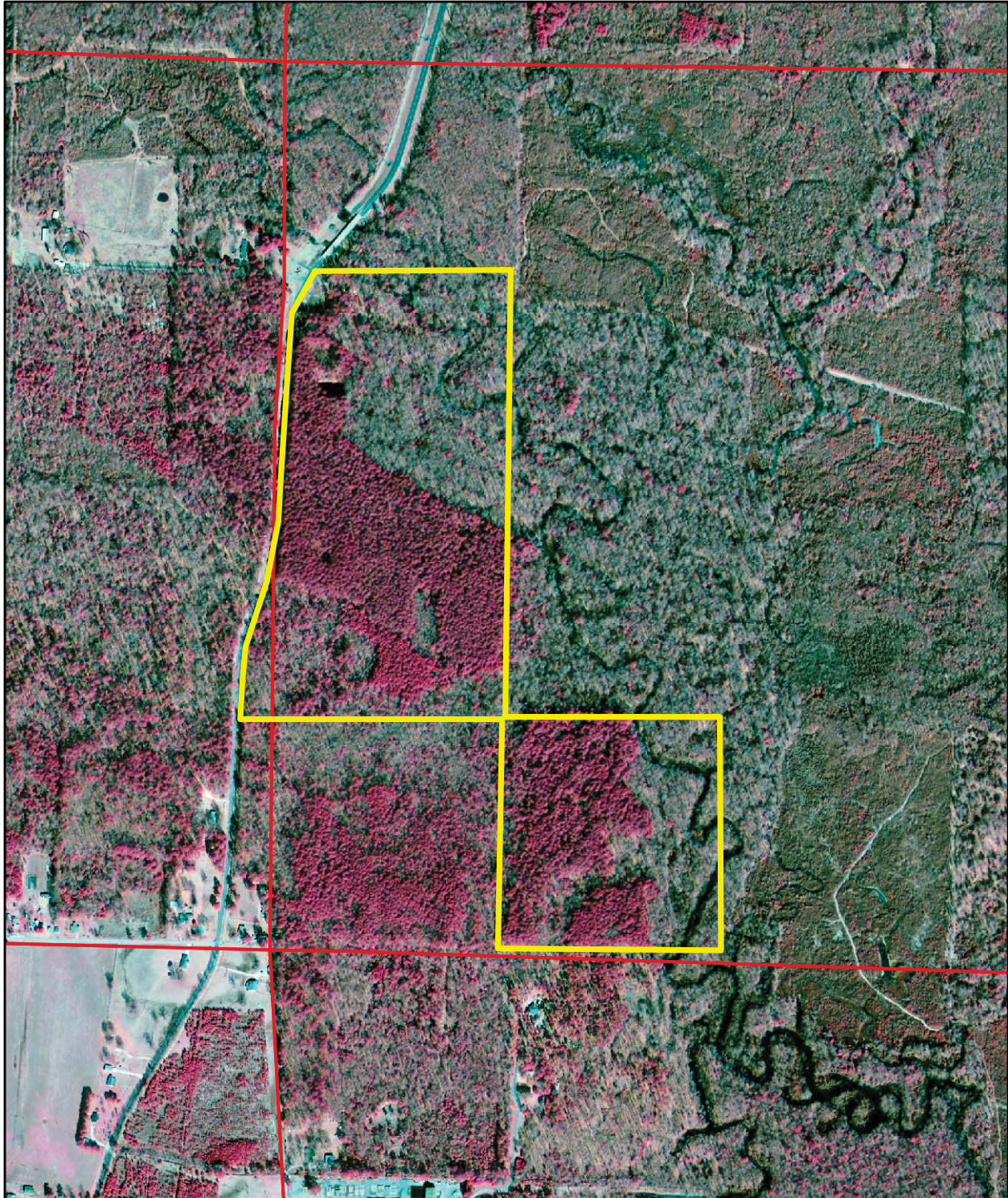
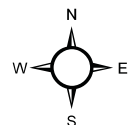


LAND SALE NOTICE

Poyen Highway 229 Tract
SE 1/4 of SW1/4 ;NW 1/4 of SW1/4; SW 1/4 of NW 1/4, Section 28; pt. E 1/2 of SE 1/4 of Section 29,
T4S, R15W, Grant County, AR,
containing a total of 124.25 acres, more or less.



0 0.25
Miles



2006 Aerial
Color Infrared
MEC

(870) 246-5757
www.kingwoodforestry.com

