



GREAT SOUTHERN  
*Land*



## **Gurley Creek South Tract #08-014**

### **277+/- Acres in Jefferson and Blount County, AL**

### **Offered for \$ 796,088 (\$2,873.96/ac)**

- South Blount Co. and North Jefferson Co. between Pinson and Locust Fork, east of Hwy 79 and west of Hwy 75
- Access from neighborhood on south end of property in Jefferson County, just north of Cumberland Lake Golf Club
- Minutes to the Birmingham metro area
- Beautiful frontage on Gurley Creek, approximately 5,500 feet which is the northern boundary of the tract.  
The creek can be enjoyed from a scenic hilltop view or use the gentle sloping areas for direct access
- Great for rural home site or cabin
- Several game plots
- Predominately hardwoods
- Great for recreation, such as hunting and ATV riding
- Good internal roads/trails
- GPS: N -86.66894, W 33.78001

**[www.GreatSouthernLand.com](http://www.GreatSouthernLand.com)**

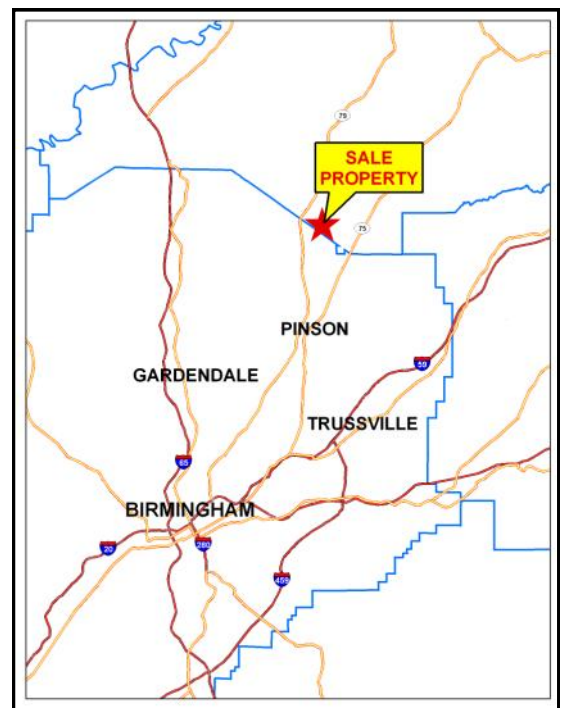


Great  
Southern  
Land

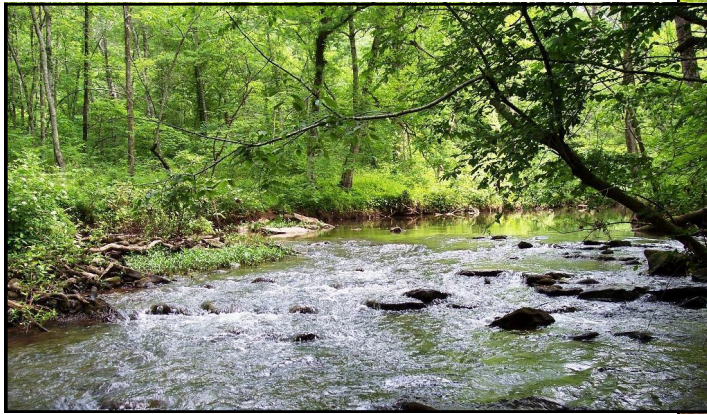
**For a tour or more information call:**

Eddie Stone, Listing Agent  
205-702-4420  
205-837-4466 cell  
[edstone@windstream.net](mailto:edstone@windstream.net)

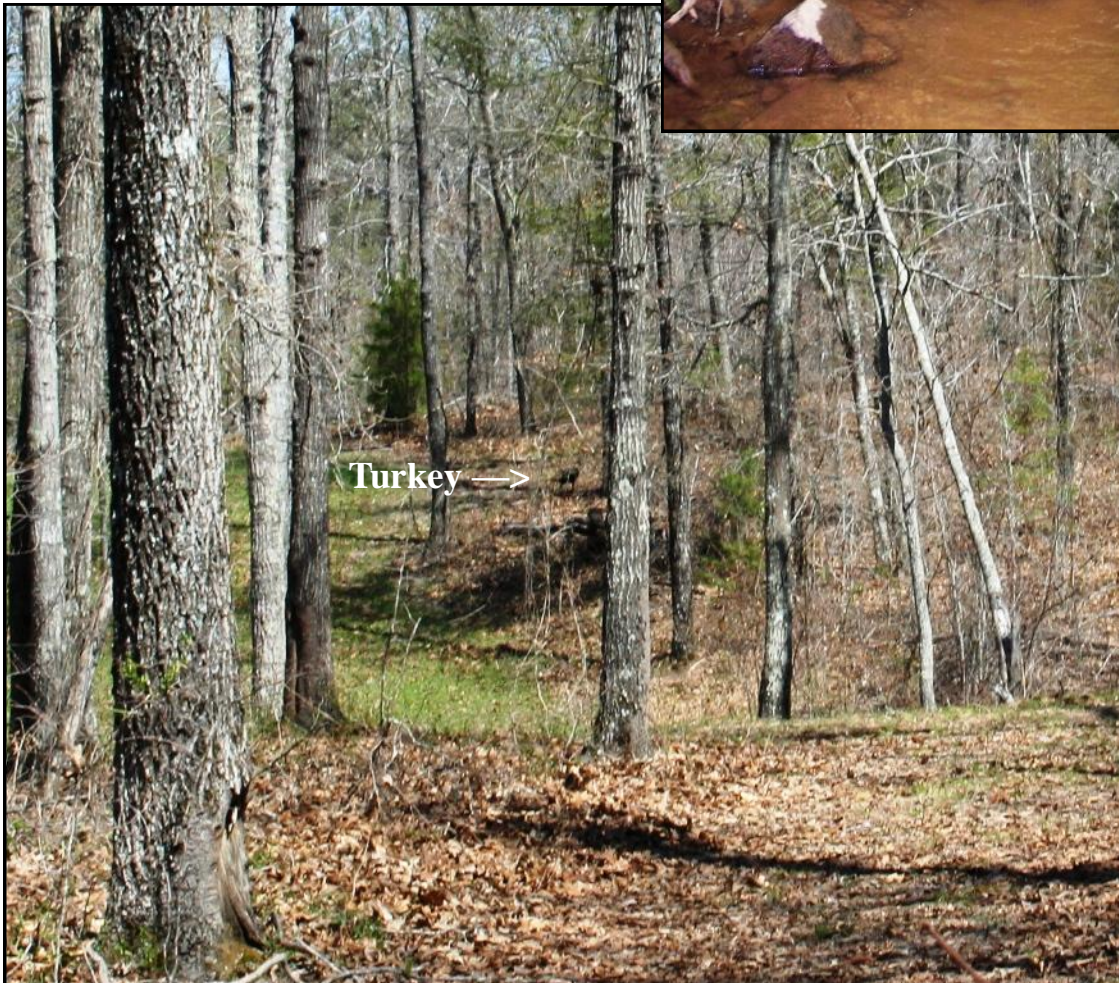
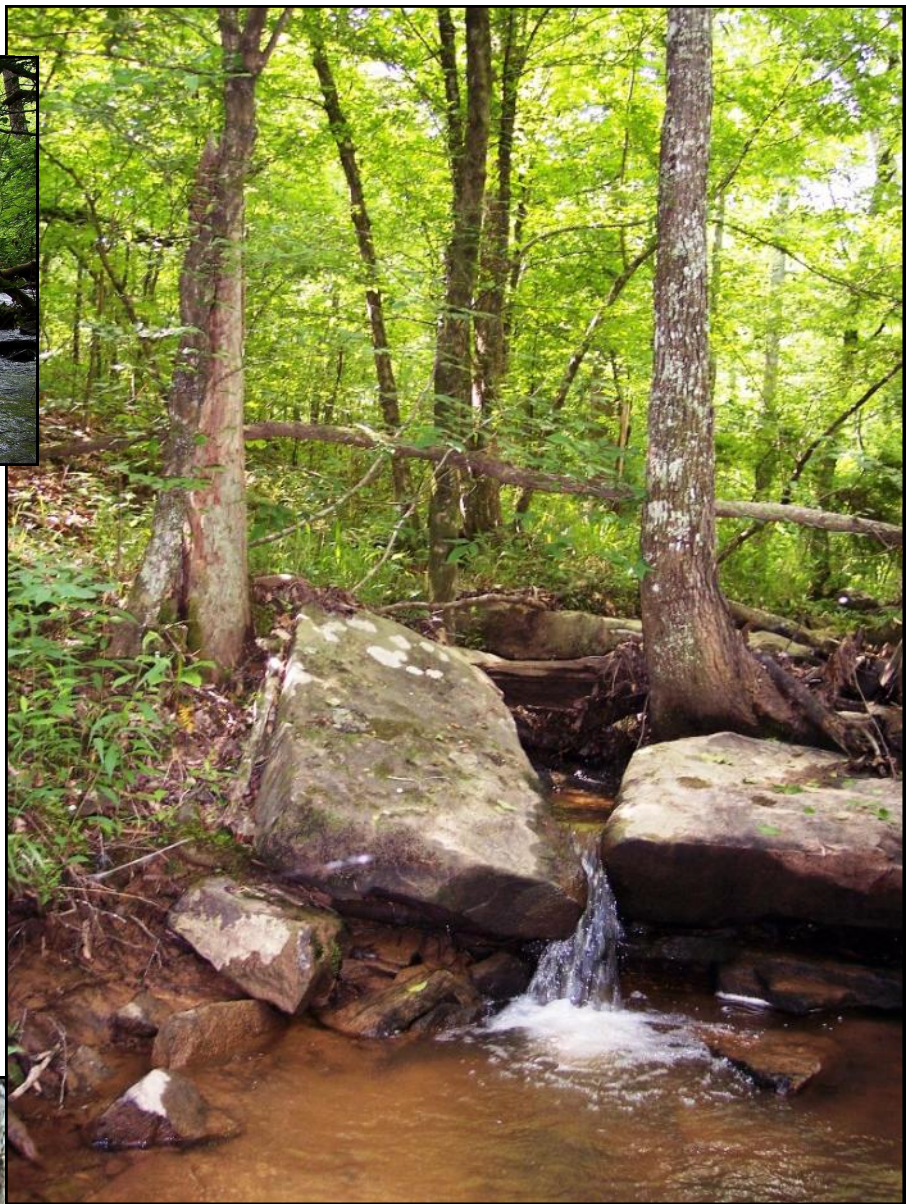
Fletcher Majors, ALC, Broker  
334-567-0924 ext. 205  
334-328-9278 cell  
[Fletcher@GreatSouthernLand.com](mailto:Fletcher@GreatSouthernLand.com)







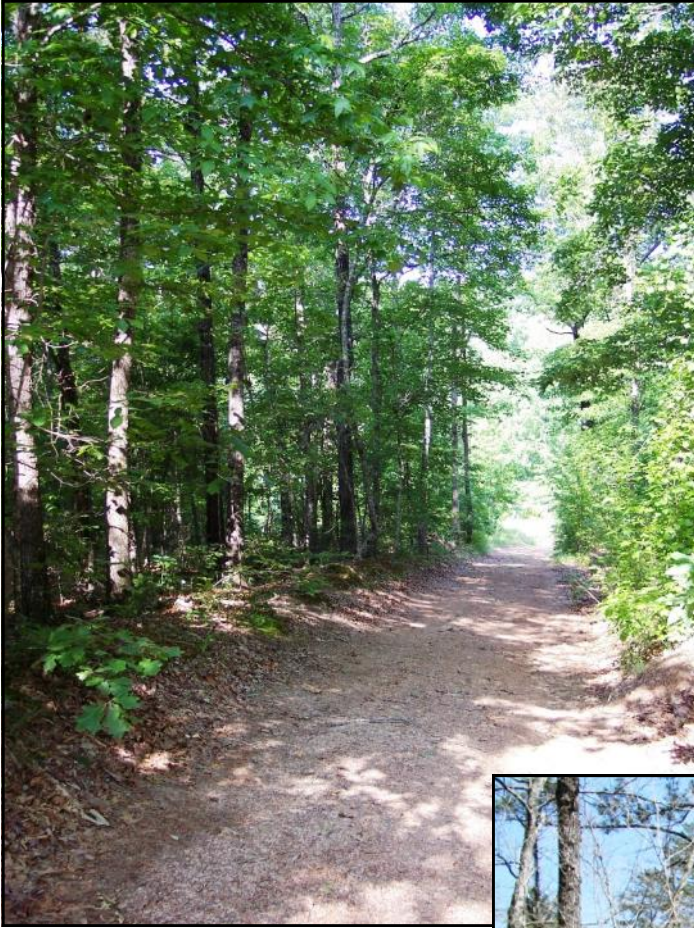
**Beautiful  
waterfalls  
cascade over large  
rocks in  
Gurley Creek**



**Turkey →**

**Nice hardwoods and  
game plots make  
this a great hunting  
tract  
(note Turkey in  
background)**





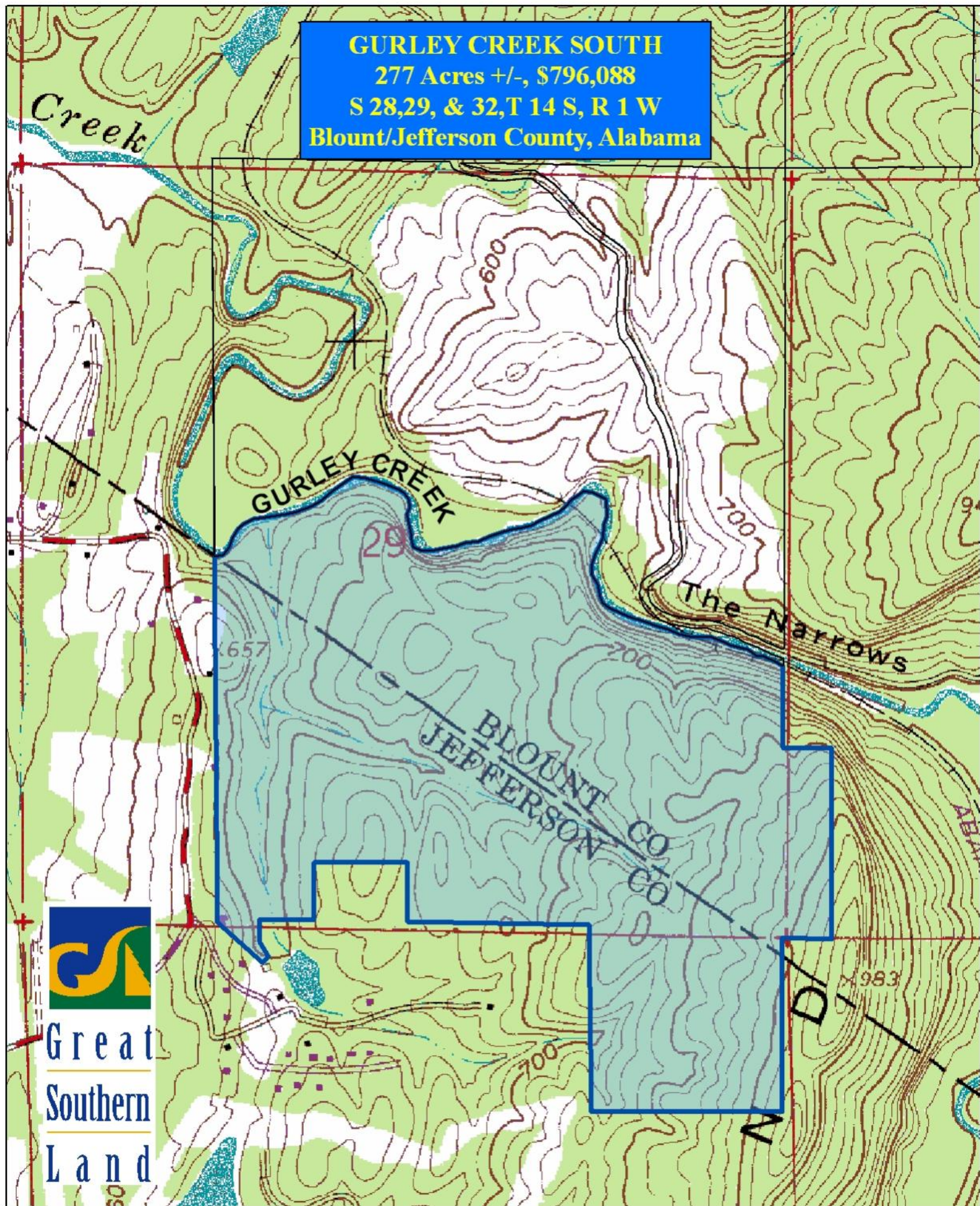
**This tract has a  
good internal  
road system  
which is great for  
ATVs and  
provides access to  
shooting houses  
for hunting (photo  
above and to left)**

**Nice creek is a  
great water  
source for deer  
and other  
habitat on the  
tract (photo  
right)**





**GURLEY CREEK SOUTH**  
277 Acres +/-, \$796,088  
S 28,29, & 32,T 14 S, R 1 W  
Blount/Jefferson County, Alabama



0 500 1,000 2,000 Feet



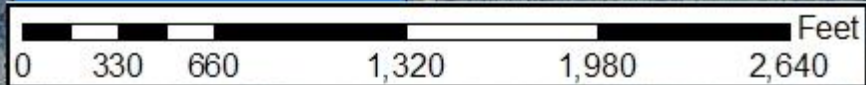


*Gurley Creek North*  
**168 ac**

*Narrows Road East*  
**74 ac**

*Gurley Creek South*  
**277 ac**

**Gurley Creek South**

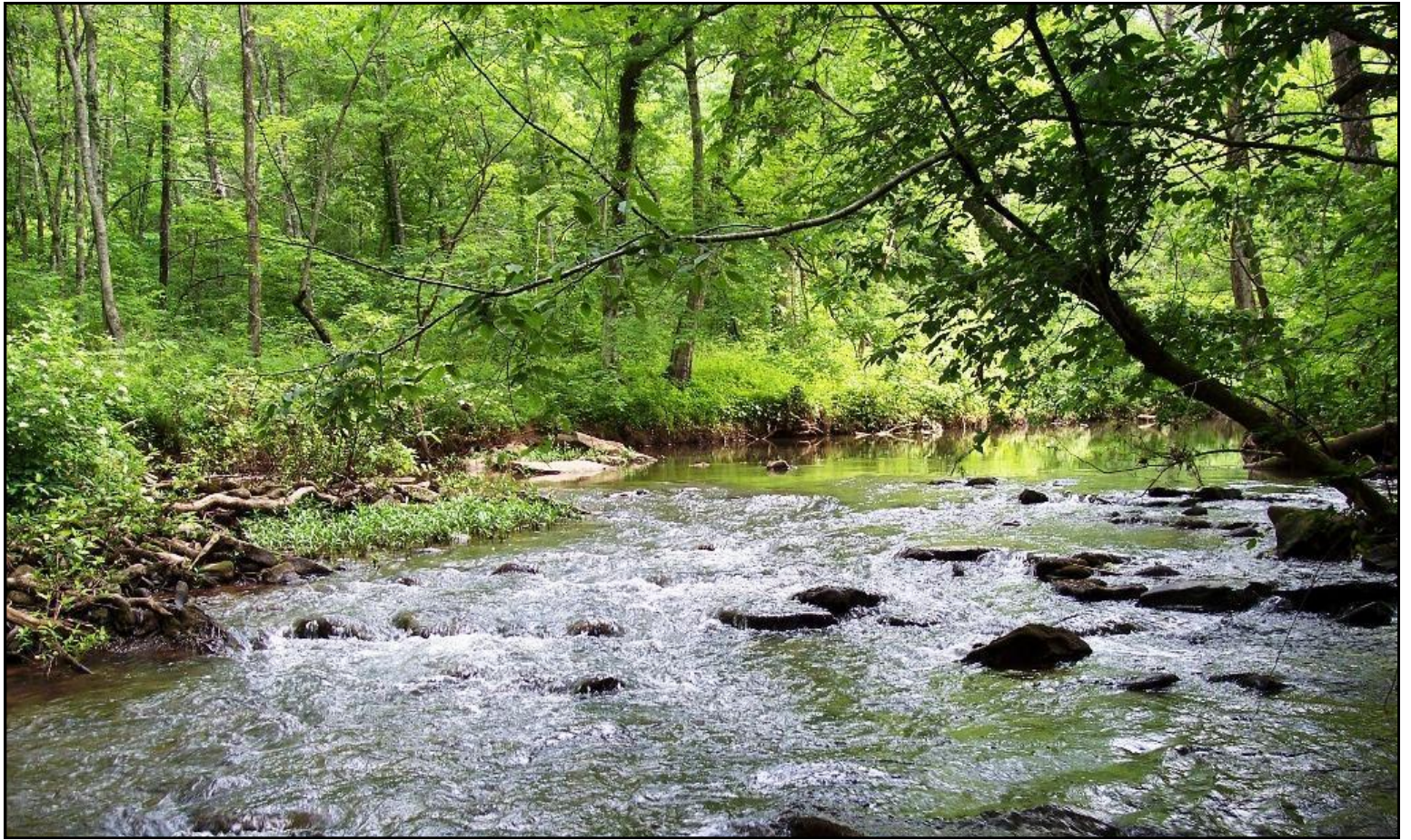






**For more information or a tour, contact Eddie Stone at 205-837-4466**

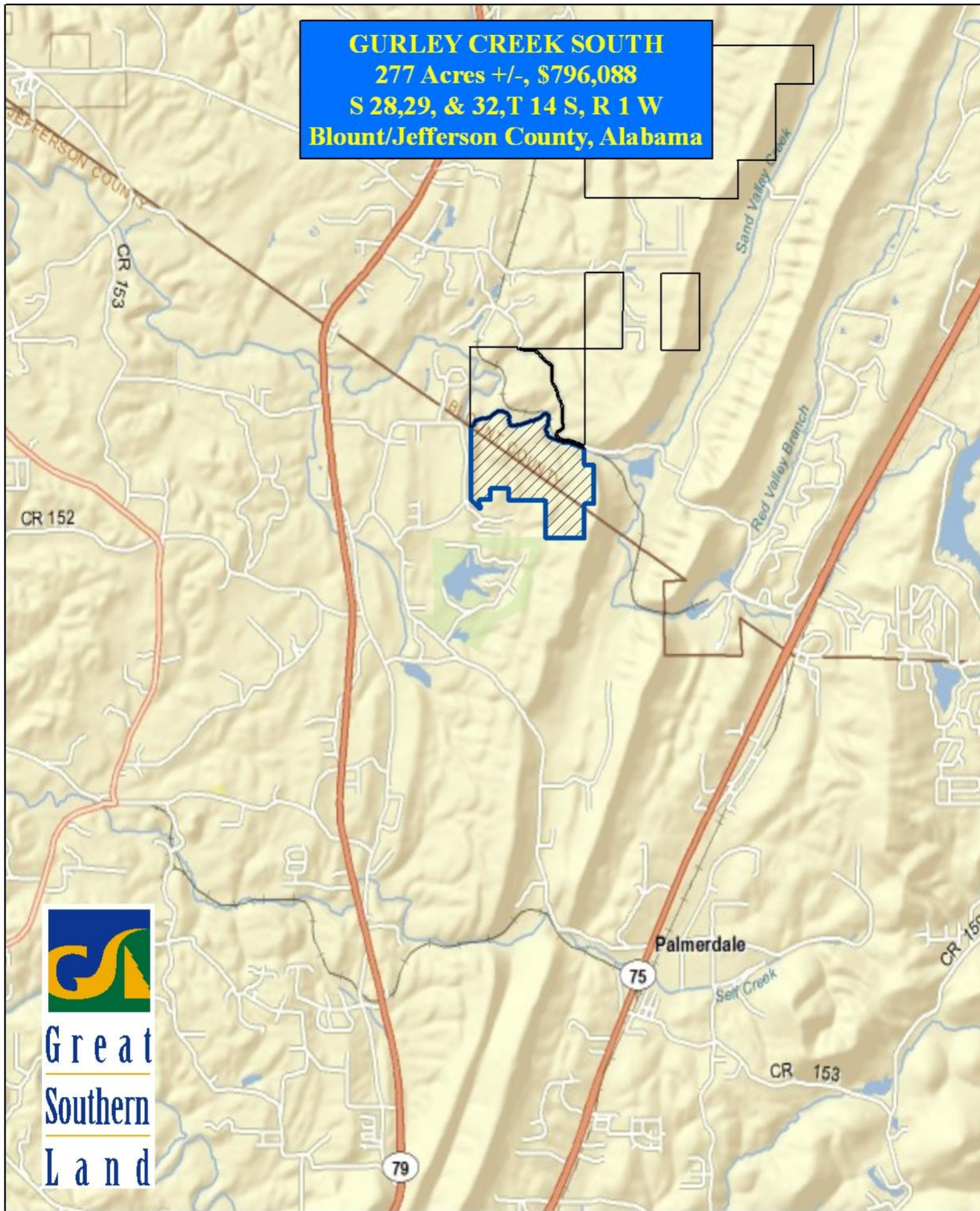




**Visit our Website at [www.GreatSouthernland.com](http://www.GreatSouthernland.com)**



**GURLEY CREEK SOUTH**  
**277 Acres +/-, \$796,088**  
**S 28,29, & 32,T 14 S, R 1 W**  
**Blount/Jefferson County, Alabama**



Great  
Southern  
Land

0 0.5 1 2  
Miles