

Tallapoosa Co., AL

SEE PHOTOS
BELOW!

www.cypruspartners.com

Reference # 189

More info at
205-870-5455

Land For Sale

35 acres +/-

\$70,000

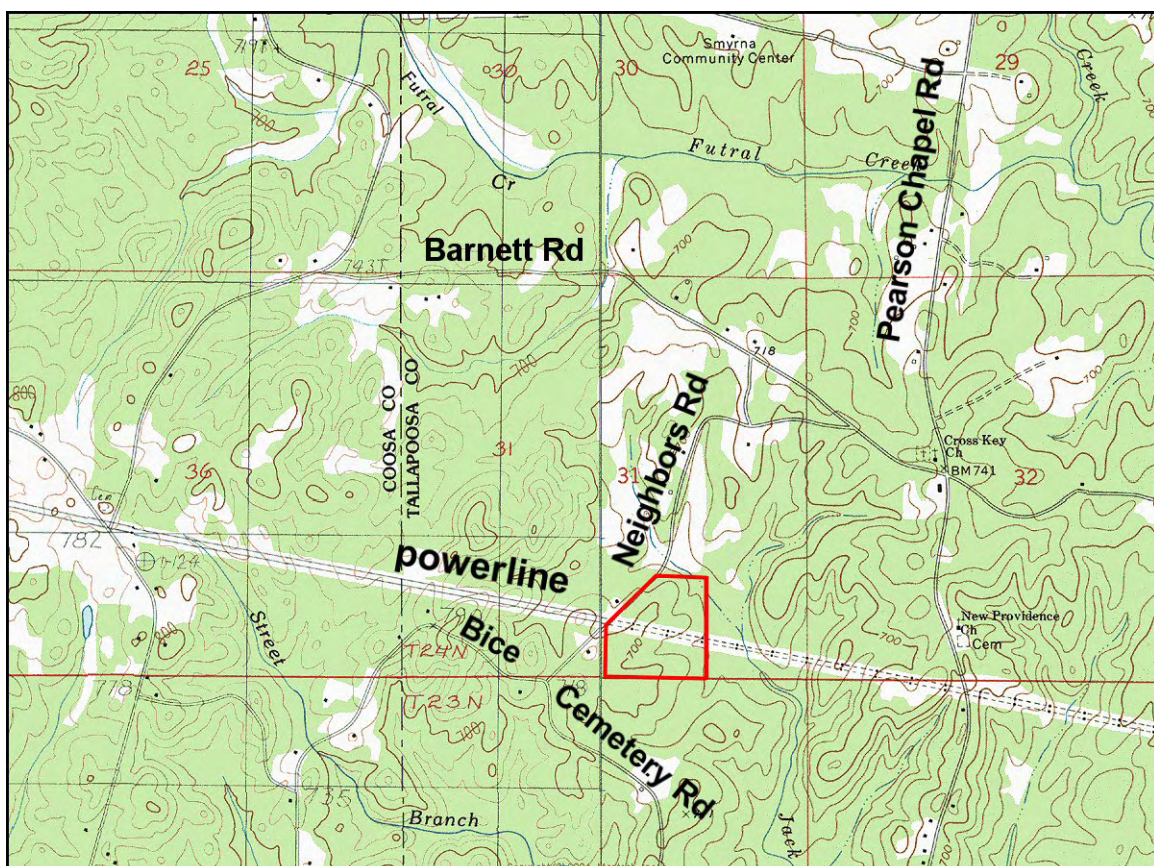
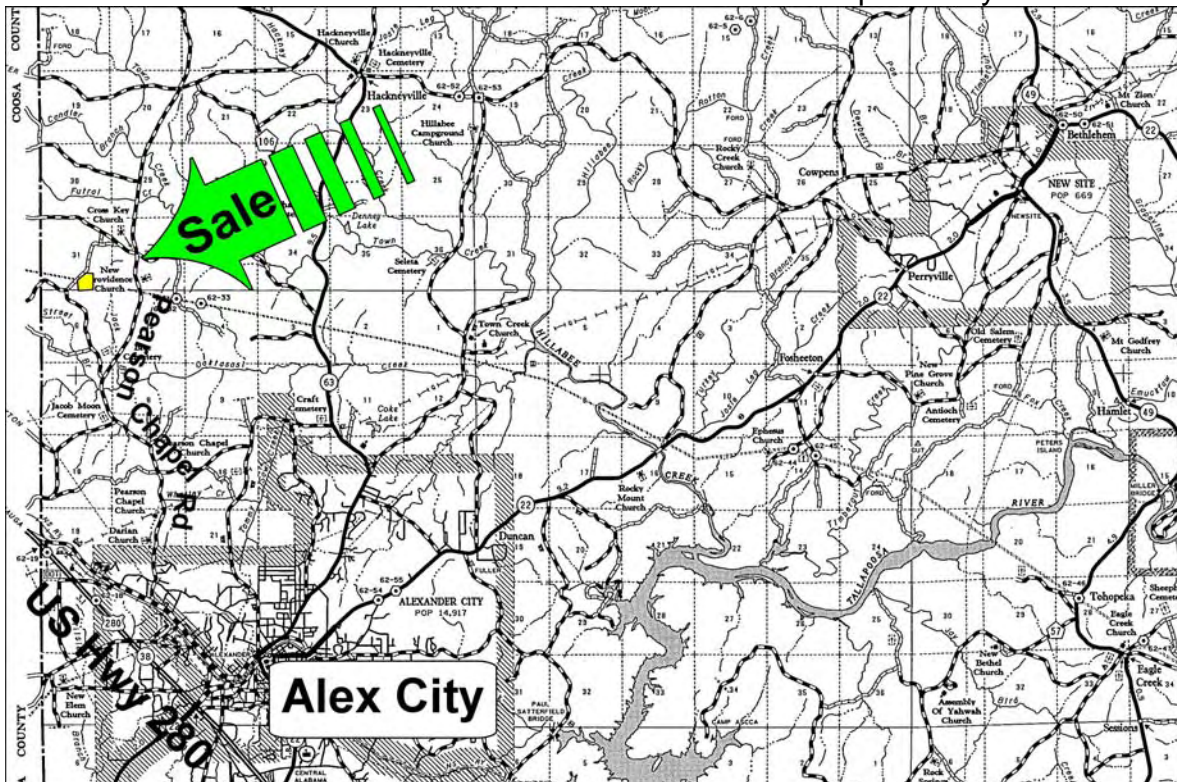
Exclusive Agent For Owner

CYPRUS
PARTNERS

P O Box 590045
Homewood, AL 35259

- ⇒ Located about 15 minutes to US Hwy 280 and Alex City
- ⇒ About 900' frontage on a paved road, property has been professionally managed
- ⇒ Pine "seed-tree" cut leaving seed trees, young pines & pretty hardwood along creek
- ⇒ Several house sites, power available, property lines marked

All distances and acres are estimates and should be independently verified



NOTICE: Investment in land carries risk. Prospective buyers should understand and independently verify the risk factors before buying this property. All information furnished by Cyprus Partners about this property has been obtained from sources believed to be reliable. However, neither Cyprus Partners nor the property owner makes any representation or warranty as to completeness or accuracy. This property is subject to prior sale, price change and withdrawal from the market without notice. No representation or warranty is made, express or implied, as to the condition of the property, boundaries, fitness for any particular use, Fair Market Value, access, acres, zoning, or condition of title.



Aerial view



County road frontage



This creek crosses the northeast corner of the property



Hardwood forest along the creek



A meadow under the powerline



The corners and lines are marked



A view of the trees along the powerline



A view of pine seed trees – lots of young pine starting to grow