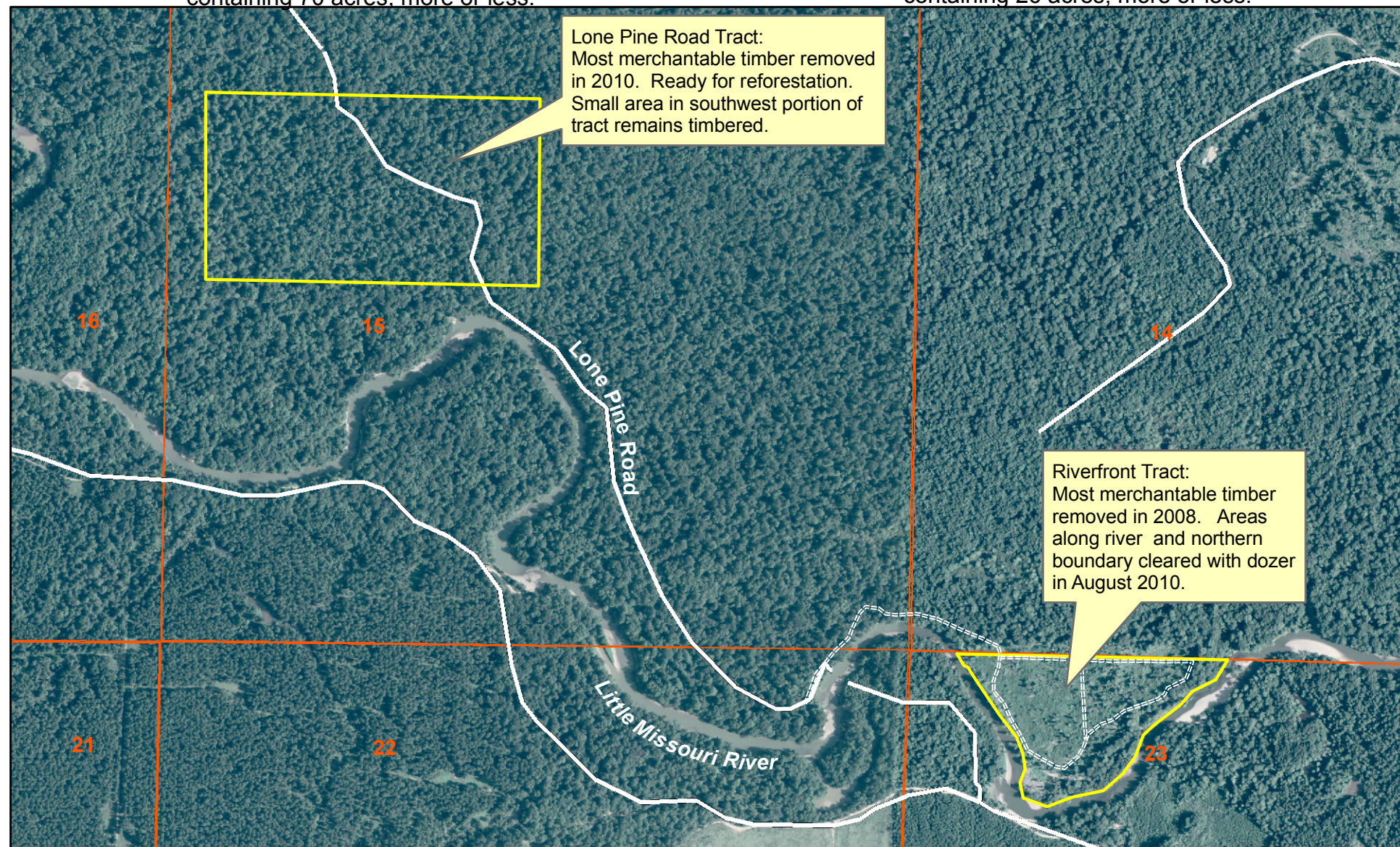


LAND SALE NOTICE  
Lone Pine Road Tract (Listing #4194)  
Part of NW 1/4 of Section 15, T11S, R19W,  
Clark County, Arkansas,  
containing 70 acres, more or less.

LAND SALE NOTICE  
Riverfront Tract (Listing #4195)  
Part N 1/2 of NW 1/4 of Section 23, T11S, R19W,  
Clark County, Arkansas,  
containing 26 acres, more or less.

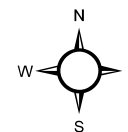
Lone Pine Road Tract:  
Most merchantable timber removed  
in 2010. Ready for reforestation.  
Small area in southwest portion of  
tract remains timbered.

Riverfront Tract:  
Most merchantable timber  
removed in 2008. Areas  
along river and northern  
boundary cleared with dozer  
in August 2010.



0 0.25  
Miles

(870) 246 - 5757  
www.kingwoodforestry.com



2009 Aerial  
MEC