

# *L'Etete Watch*



PASSAMAQUODDY BAY

PERRY, MAINE

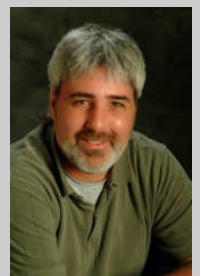
\$1,695,000

Billy Howard

Office: 207-853-2626

Cell: 207-214-7886

[www.DueEast.com](http://www.DueEast.com)







*Let the long, private tree lined driveway lead you to this  
Impressive 25.8 acre estate on Passamaquoddy Bay.*

*Plenty of room for a pool, sports field, or horses— in addition to the hard  
surface tennis court already in place!*

*Think Family Compound or Bed & Breakfast!*





# *Main House*





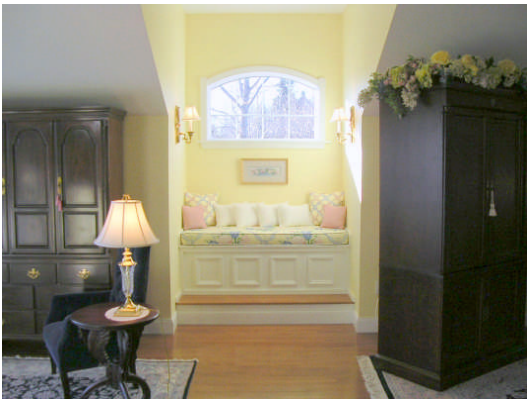


*Meticulous attention to detail in the 5,200 square foot main house with 3 bedrooms, 4.5 bathrooms, office/additional bedroom, library and gourmet kitchen with attached walk-in pantry and great room.*

*The large living room with wrap around porch offers panoramic views of the Maritimes and 650' private pebble beach.*







*Exquisite master suite opens up to east facing ocean views  
on a covered porch*

*Luxurious master bath & two walk-in closets*





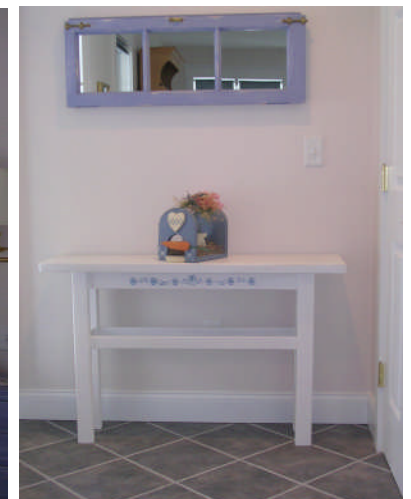
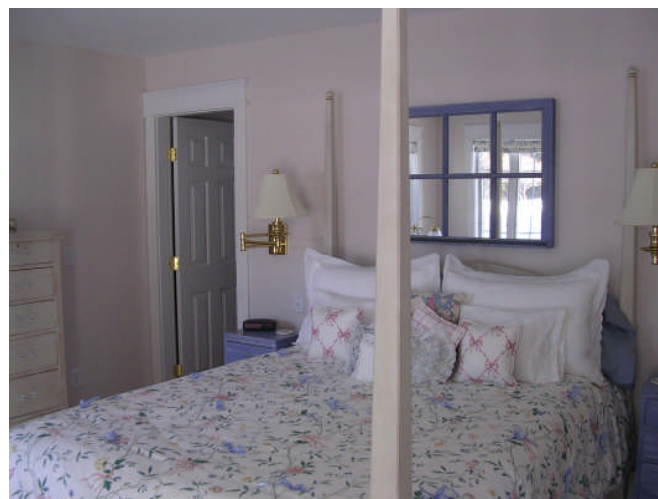
# *Guest House*







*Let the 1 bedroom, 1 bath guest house accommodate your long term visitors with 850' square feet of privacy.*



**We cover the Heart of Downeast ME**  
*Unspoiled Washington County*

<b>Eastport:</b>	<b>183 County Road</b>	<b>853-2626</b>
<b>Lubec:</b>	<b>171 County Road</b>	<b>733-5511</b>
<b>Calais:</b>	<b>353 North Street</b>	<b>454-2525</b>



*For More Information On This Property Visit:*

**[www.DueEast.com](http://www.DueEast.com)**

**1-877-853-2626**

*Shown by Appointment Only*



**Billy Howard**  
**Broker**

Office: 207-853-2626

Fax: 207-853-2605

Personal: 214-7886

[BillyHoward207@yahoo.com](mailto:BillyHoward207@yahoo.com)