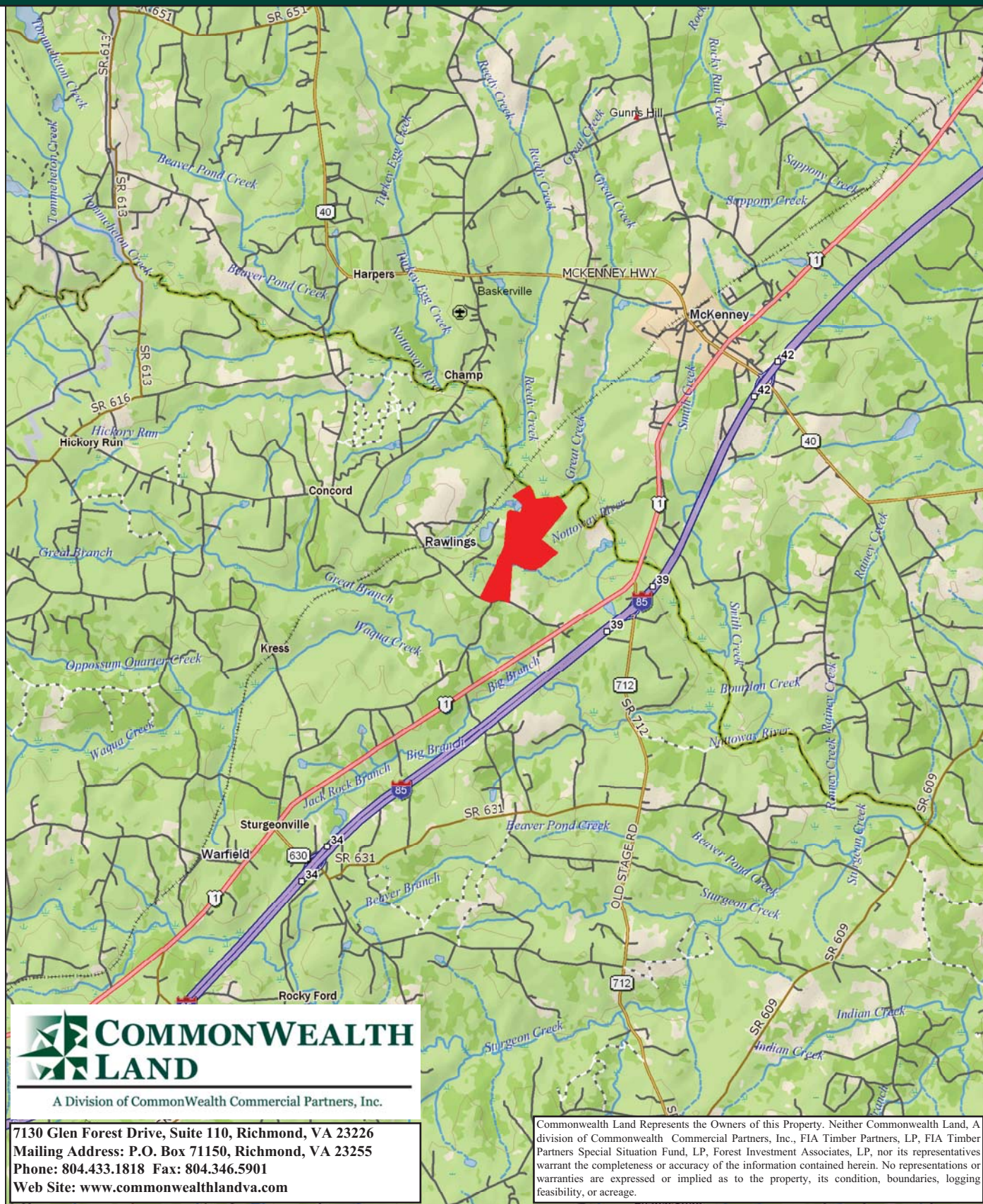


Timberland Investment Opportunity

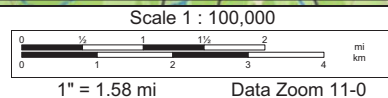
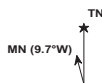
Browder Harris Tract - 346+/- Acres - Brunswick County, VA



Data use subject to license.

© DeLorme. XMap® 7.

www.delorme.com



Tract Summary Data

Browder Harris Tract - 346+/- Acres - Brunswick County, VA

***Excellent Long-Term Timberland Investment Opportunity Offering Strong Recreational Potential with Approximately 2,450' of Frontage Along the Nottoway River**

***Located Approximately 2 Miles from the Rawlings Exit (#39) at I-85 with 1,900' of Frontage along VSR629 (Rawlings Rd.)**

***Flat to Rolling Topography with Strong Interior Road System and Good Access Points to the Nottoway River**

***Timber Comprised of 193+/-Acres of Loblolly Pine Established in 1998, 88+/-Acres of Loblolly Pine Established in 2005 with the Remaining Balance in Mixed Pine and Hardwood**

***Currently Zoned A-1 (Agricultural) and Identified as Tax Map Parcel #16-51**

***N36-56.366' W77-45.786'**

***Excellent Wildlife Habitat with Strong Populations of Deer & Turkeys**

***Directions - Take I-85 South to Exit #39 (Rawlings), then Turn Right on VSR712 (Old Stage Rd.) , Then Take a Left US1 (Boynton Plank Rd.) and Travel Approximately 1 Mile, Then Turn Right on VSR629 (Rawlings Rd.) and Travel Approximately 3,800' Where the Property Begins on the Right**

***Contact Brokers For More Details**

***Offered For \$650,000**

Contact:

Hank Campbell

Office: 804.433.1818

Fax: 804.346.5901

Cell: 804.334.3136

hcampbell@commonwealthlandva.com

Bill Barnett

Office: 804.433.1821

Fax: 804.346.5901

Cell: 804.339.1100

bbarnett@commonwealthlandva.com

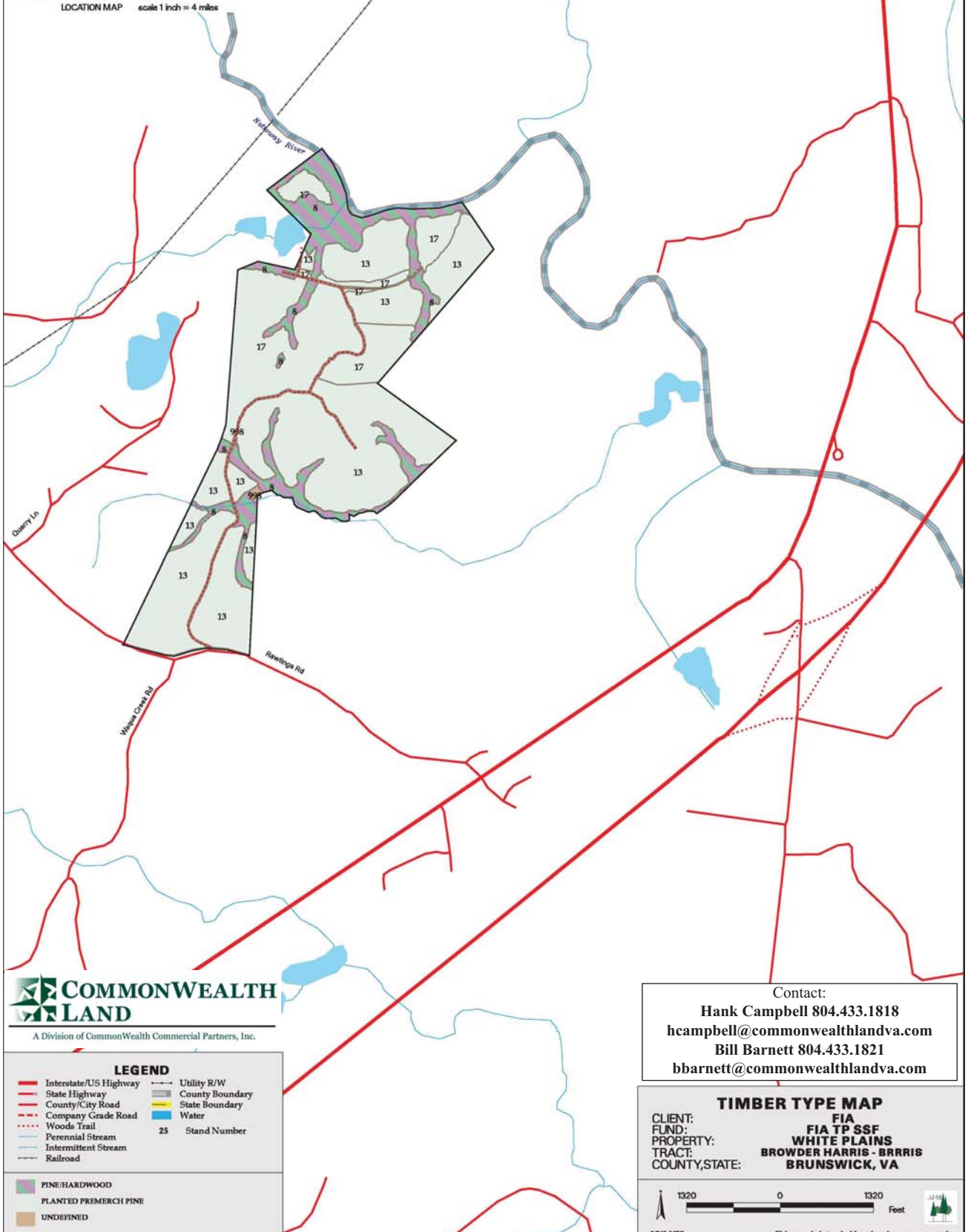
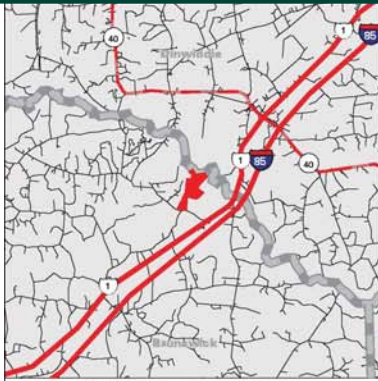
Property Information is Available at *Commonwealthlandva.com, LandsofAmerica.com and Costar.net*



A Division of Commonwealth Commercial Partners, Inc.

Commonwealth Land Represents the Owners of this Property. Neither Commonwealth Land, A division of Commonwealth Commercial Partners, Inc., FIA Timber Partners, LP, FIA Timber Partners Special Situation Fund, LP, Forest Investment Associates, LP, nor its representatives warrant the completeness or accuracy of the information contained herein. No representations or warranties are expressed or implied as to the property, its condition, boundaries, logging feasibility, or acreage.

COMP-STAND	DESCRIPTION	YEAR	ACRES
669-8	PHBBN5NP	1968	57.82
669-13	LBURP1YP	1998	193.22
669-17	LBURP1YP	2005	88.21
669-998	UDNAC04NP	0	6.93
TOTAL = 346			



COMMONWEALTH LAND
A Division of Commonwealth Commercial Partners, Inc.

LEGEND	
Interstate/US Highway	Utility R/W
State Highway	County Boundary
County/City Road	State Boundary
Company Grade Road	Water
Woods Trail	25 Stand Number
Perennial Stream	
Intermittent Stream	
Railroad	
PINE/HARDWOOD	
PLANTED PRIMERCH PINE	
UNDEFINED	

Contact:
Hank Campbell 804.433.1818
hcampbell@commonwealthlandva.com
Bill Barnett 804.433.1821
bbarnett@commonwealthlandva.com

TIMBER TYPE MAP

CLIENT: FIA
FUND: FIA TP SSF
PROPERTY: WHITE PLAINS
TRACT: BROWDER HARRIS - BRRIS
COUNTY, STATE: BRUNSWICK, VA

1320 0 1320 Feet

12/16/09 This map is intended for planning purposes only



Condition Summary Report

Parameters:

Client: FIA TP SSF

Tract: BROWDER HARRIS (14536690)

MU: WHITE PLAINS

Compartment: Not Specified

Convertability Acreage Summary of Timbered Pine Stands Acreage and Volume (Tons) By Convertability Class

Convertability	Acres	%	PINE Pulp	PINE CNS	PINE Saw	HW Pulp	HW Saw	CYP Pulp	CYP Saw
Convertible	281.43	81.3	0.00	0.00	0.00	0.00	0.00	0.00	0.00
Non-Convertible	64.74	18.7	174.21	549.96	809.46	2,086.84	1,037.20	0.00	0.00
	346.17		174.21	549.96	809.46	2,086.84	1,037.20	0.00	0.00

Pre-Merchantable Acreage Summary of Timbered Pine Stands Acres By Established Year and Establishment Type

Year Established	Stand Age	Planted Acres	Natural Acres	Total Acres
2005	5	88.21	0.00	88.21
1998	12	193.22	0.00	193.22
Pre-Merchantable Total		281.43	0.00	281.43

Timber Type Summary - Acreage By Timber Type

Timber Type	Acres
Non-Forest	6.93
Pine Natural	57.81
Pine Planted	281.43
Total	346.17

Browder Harris Tract
346+/-Acres - Brunswick County, VA
Tax Map Parcels #16-51
Approximate Tract Boundaries Shown in Red

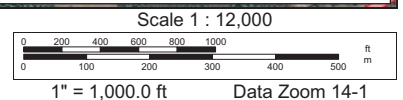
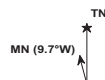


Contact:
Hank Campbell 804.433.1818
hcampbell@commonwealthlandva.com
Bill Barnett 804.433.1821
bbarnett@commonwealthlandva.com

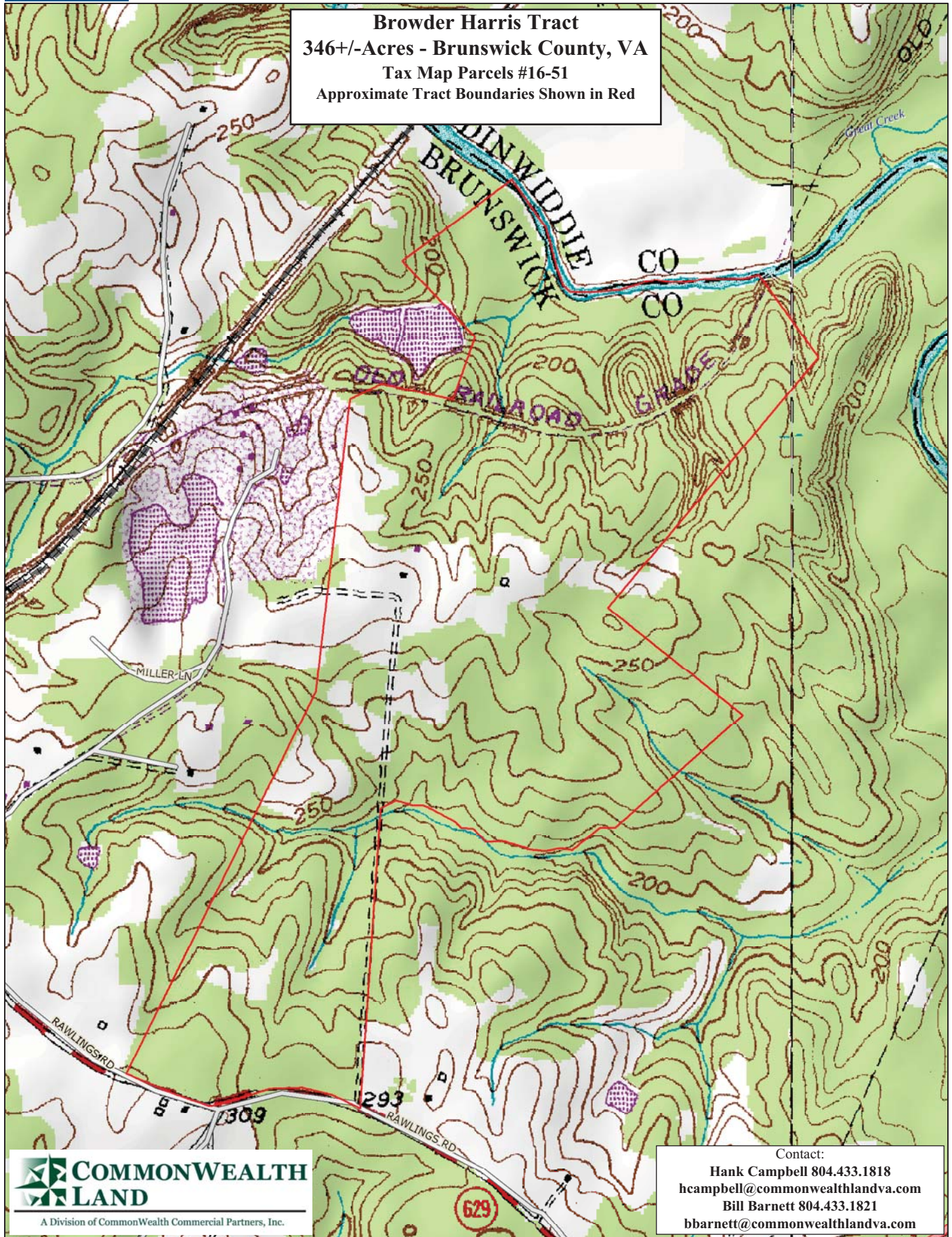
Data use subject to license.

© DeLorme. XMap® 7.

www.delorme.com



Browder Harris Tract
346+/-Acres - Brunswick County, VA
Tax Map Parcels #16-51
Approximate Tract Boundaries Shown in Red



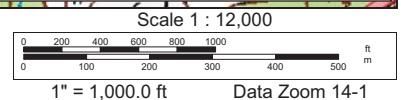
COMMONWEALTH LAND
 A Division of Commonwealth Commercial Partners, Inc.

Contact:
 Hank Campbell 804.433.1818
hcampbell@commonwealthlandva.com
 Bill Barnett 804.433.1821
bbarnett@commonwealthlandva.com

Data use subject to license.

© DeLorme. XMap® 7.

www.delorme.com





**COMMONWEALTH
LAND**

A Division of Commonwealth Commercial Partners, Inc.

