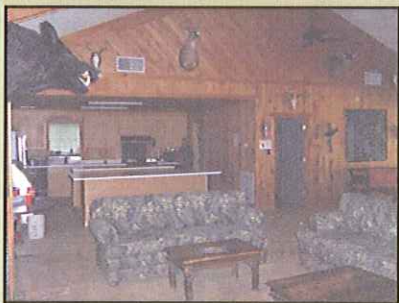


## Equity Membership

### Black Bayou Hunting Club

Bolivar & Washington County, MS



**CONTACT:**  
**DANNY LYNN**  
 601.942.0432

[dlynn@sartainsheritage.com](mailto:dlynn@sartainsheritage.com)

Sartain's Heritage Properties  
 106 First Choice Drive  
 Madison, MS 39110  
 601.856.2720  
 Fax: 601.853.6765  
[www.SartainHeritage.com](http://www.SartainHeritage.com)



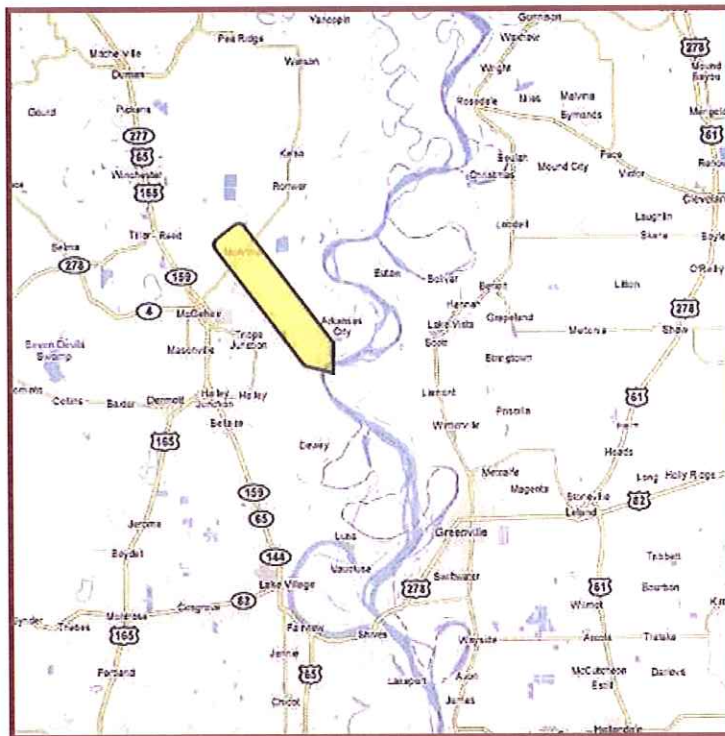
This equity membership provides ownership in 6,375 acres of legendary Mississippi River hunting and fishing habitat. The property consist of 75 year old hardwood forest, sections of strategically located small cut-over areas, hardwood plantations, oxbow lakes, sloughs and numerous food plots. The deer herd and habitat is managed by nationally respected wildlife biologist Dr. Harry Jacobson and the club follows his recommendations closely. The turkey hunting is outstanding, hogs are plentiful and you are located in the heart of the Mississippi Duck Flyway. During the spring enjoy great fishing in Black Bayou or any of the numerous oxbow lakes and sloughs. This is truly a sportsman's paradise!

A membership also comes with a lot to build a cabin on in the camp area as well as use of the club owned Lodge and cleaning facilities. The club hires a full time care taker who maintains all club owned facilities, roads and food plots. All you have to do is show up and hunt!

Black Bayou is located about 20 miles north of Greenville Mississippi, the home of casinos, some great restaurants and an airport.

## \$350,000.00





### **Deer Management Program 2008**

Bucks Harvested - 35

Does Harvested - 30

#### Antler Restrictions

8 points w/ 22 inch beam length.

Bucks w/ less than 8 points and 19 inch beam lengths are harvested.

10 point main frames must score 150 or better.

#### Memberships

Black Bayou has 40 members