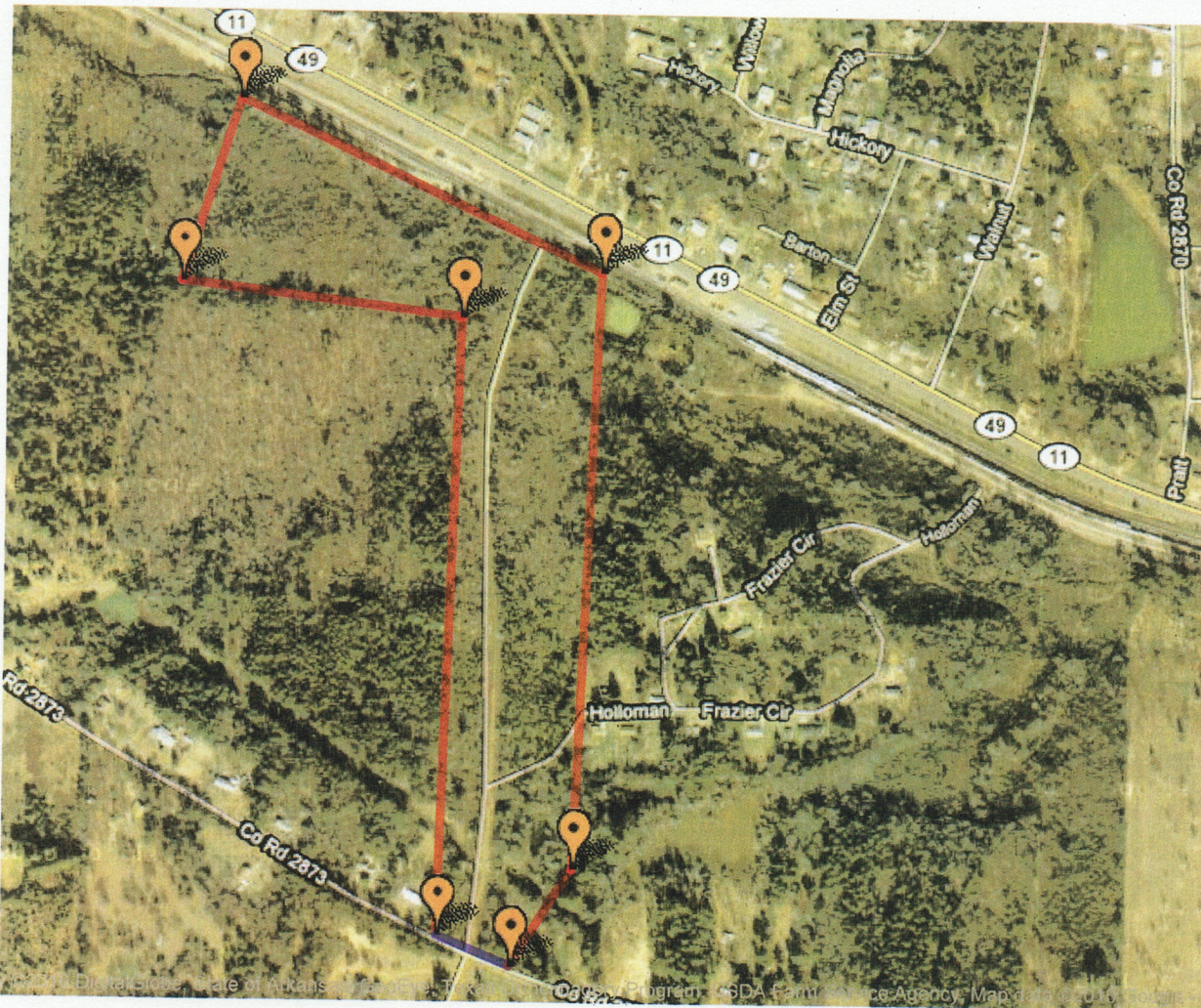


Google Planimeter

Measure areas using Google Maps!



Drag the map with your mouse, or double-click to center.

Click on the map to place points.

The enclosed area is shown below.

Delete Last Point

Clear All Points



santafe.org

1.660e+5 m² / 16.60 hectares / 0.1660 km² / 1.786e+6 ft² / 41.01 acres / 0.06408 mile²

Notes:

- The page remembers your most recent position/zoom/map-type for the next time you visit.
- If you haven't visited before, it tries to figure out your location based on your internet address.
- The area computation is done using spherical geometry, so it's correct for large regions.
- The lines between points are drawn as great circles, to go along with the spherical area math.
- Lines that cross the International Dateline **do** work, with a small gap in the line. (Google Maps applications tend to have problems with the Dateline.)
- Areas that span more than half the globe may display strangely.
- This used to be called the Google Areometer, because I couldn't remember the name of the doohickey used to measure areas on a map. But the Lazyweb reminded me, so I changed it. Links using the old name will continue to work.

Gmaps Pedometer

Map courtesy of the [Google Maps API](#).

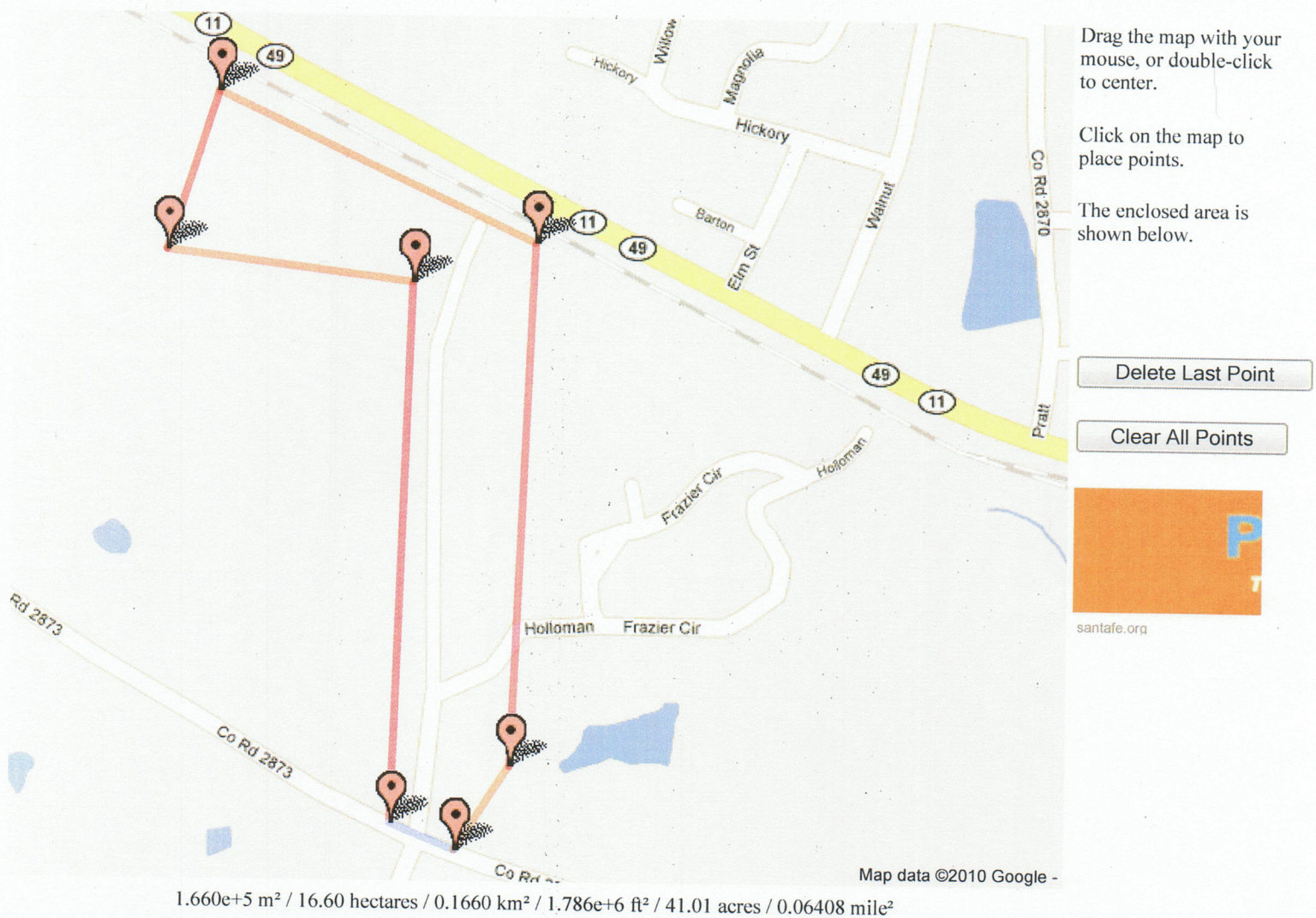
Other Google Maps apps: [Paris Star Forts](#), [Transpac 2005 Tracks](#), [BART Map/Schedule](#), [Paris Metro Map](#), [USA Hot Springs](#).

[ACME Laboratories](#)

[ACME Labs Webmaster](#) <webmaster@mail.acme.com>

Google Planimeter

Measure areas using Google Maps!



Notes:

- The page remembers your most recent position/zoom/map-type for the next time you visit.
- If you haven't visited before, it tries to figure out your location based on your internet address.
- The area computation is done using spherical geometry, so it's correct for large regions.
- The lines between points are drawn as great circles, to go along with the spherical area math.
- Lines that cross the International Dateline **do** work, with a small gap in the line. (Google Maps applications tend to have problems with the Dateline.)
- Areas that span more than half the globe may display strangely.
- This used to be called the Google Areometer, because I couldn't remember the name of the doohickey used to measure areas on a map. But the Lazyweb reminded me, so I changed it. Links using the old name will continue to work.

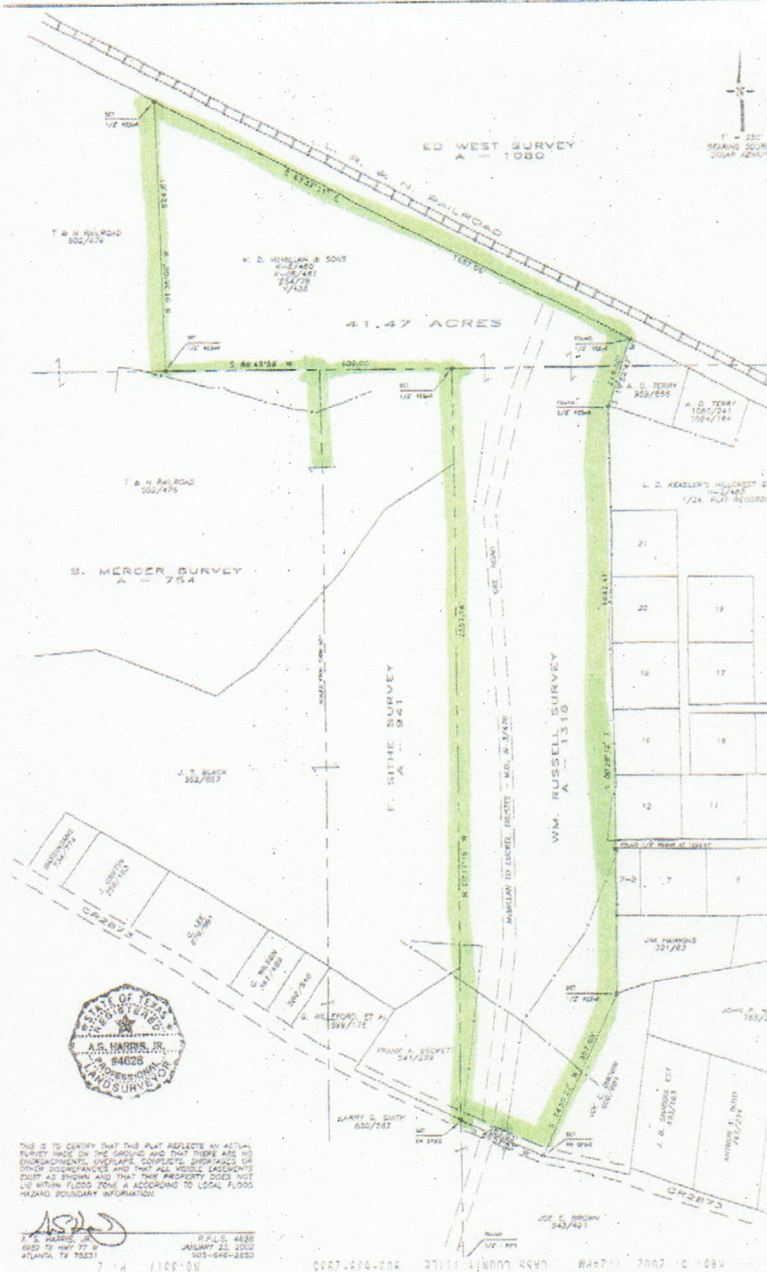
[Gmaps Pedometer](#)

Map courtesy of the [Google Maps API](#).

Other Google Maps apps: [Paris Star Forts](#), [Transpac 2005 Tracks](#), [BART Map/Schedule](#), [Paris Metro Map](#), [USA Hot Springs](#).

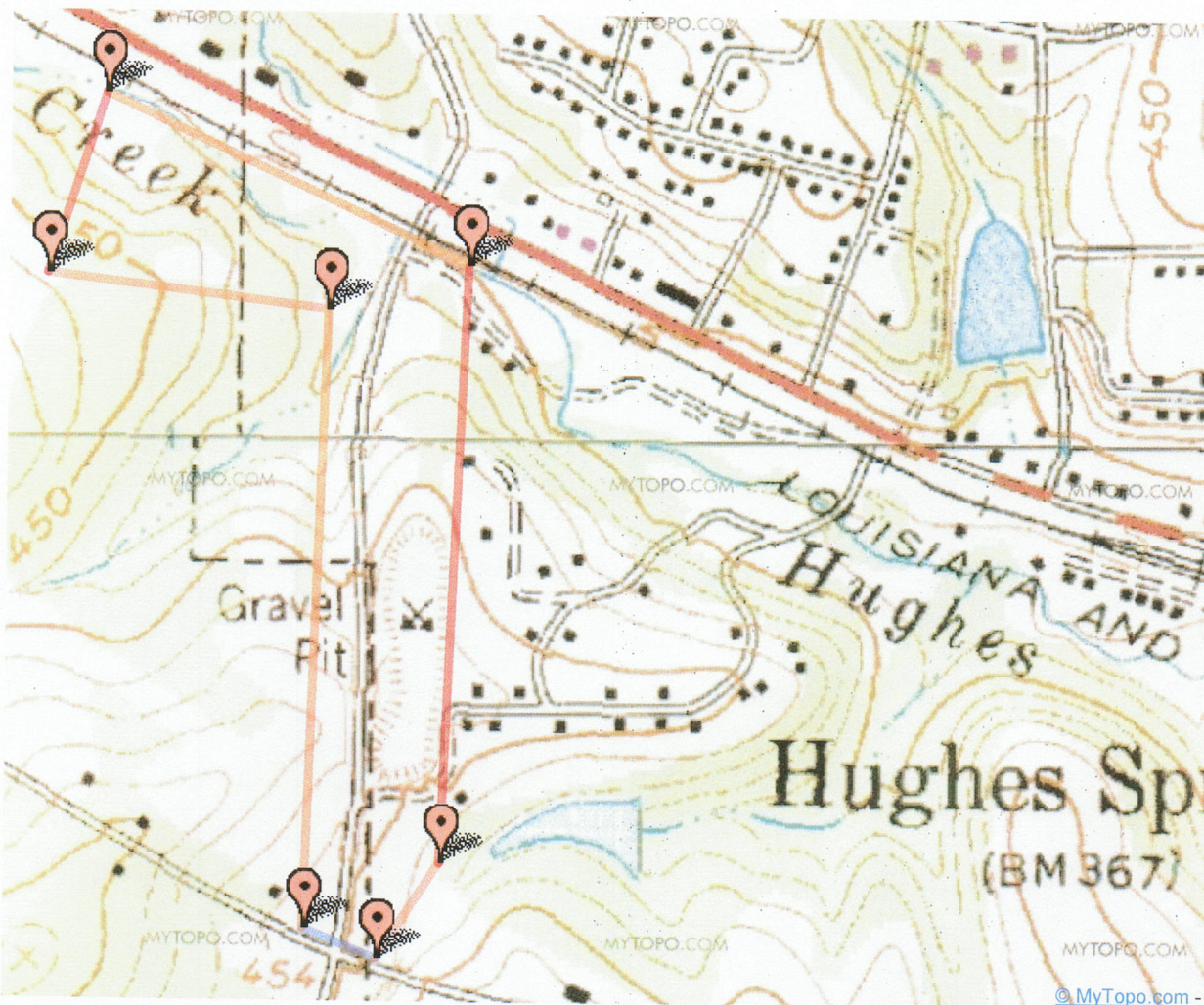
[ACME Laboratories](#)

[ACME Labs Webmaster](#) <webmaster@mail.acme.com>



Google Planimeter

Measure areas using Google Maps!



Drag the map with your mouse, or double-click to center.

Click on the map to place points.

The enclosed area is shown below.

Delete Last Point

Clear All Points



santafe.org

1.660e+5 m² / 16.60 hectares / 0.1660 km² / 1.786e+6 ft² / 41.01 acres / 0.06408 mile²

© MyTopo.com

Notes:

- The page remembers your most recent position/zoom/map-type for the next time you visit.
- If you haven't visited before, it tries to figure out your location based on your internet address.
- The area computation is done using spherical geometry, so it's correct for large regions.
- The lines between points are drawn as great circles, to go along with the spherical area math.
- Lines that cross the International Dateline **do** work, with a small gap in the line. (Google Maps applications tend to have problems with the Dateline.)
- Areas that span more than half the globe may display strangely.
- This used to be called the Google Areometer, because I couldn't remember the name of the doohickey used to measure areas on a map. But the Lazyweb reminded me, so I changed it. Links using the old name will continue to work.

[Gmaps Pedometer](#)

Map courtesy of the [Google Maps API](#).

Other Google Maps apps: [Paris Star Forts](#), [Transpac 2005 Tracks](#), [BART Map/Schedule](#), [Paris Metro Map](#), [USA Hot Springs](#).

[ACME Laboratories](#)

[ACME Labs Webmaster](#) <webmaster@mail.acme.com>

46906 ✓
47197
47198
16530