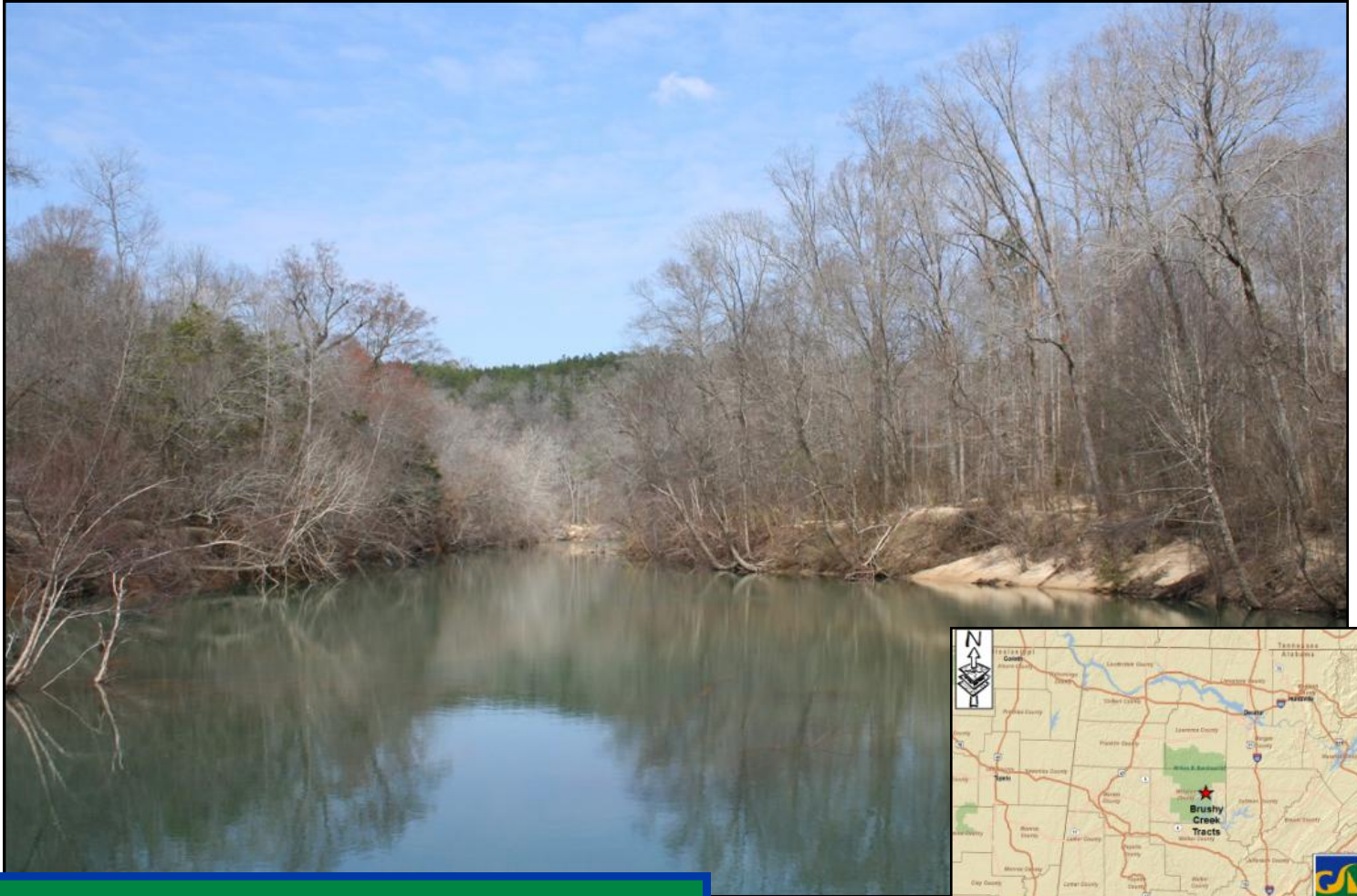




GREAT SOUTHERN  
*Land*



**Brushy Creek North Tract #67-026**  
**130.6+/- Acres in Winston County, AL**  
**6,254' frontage on Brushy Creek**  
**Offered for \$270,800 (\$2,075/ac)**

**Also available:**

Edwards Tract: 127 +/-ac, 4,600' creek frontage for \$221,200  
Brushy Creek South: 248.8+/-ac, 5,480' creek frontage for \$494,500  
Brushy Creek Tracts: 506+/- ac, 16,328' creek frontage for \$986,502

- Approximately 6,250 feet of frontage on Brushy Creek
- Great recreation tract with access from Callaway Road approximately 8/10 ths of a mile north of US Hwy. 278
- Great timber investment with lots of hunting and fishing
- Take an 11 mile boat trip through the pristine Bankhead National Forest to the Hwy. 63 Bridge on Smith Lake
- Good interior road along Brushy Creek
- 76.0 acres 2002 planted pine, 51.2 acres natural timber, 3.3 acres game plots



Great  
Southern  
Land

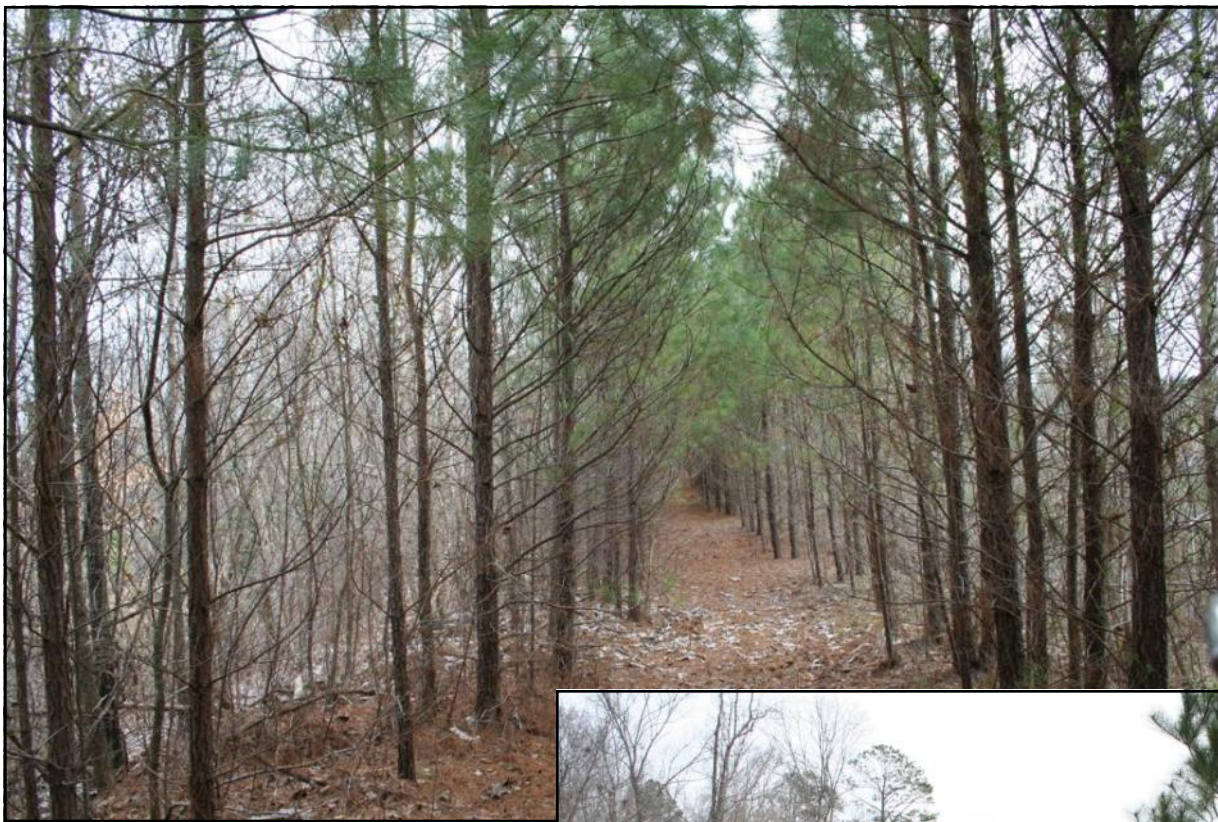
For a tour or more information call:

Eddie Stone, RF  
205-702-4420  
205-837-4466 cell  
[edstone@windstream.com](mailto:edstone@windstream.com)

Fletcher Majors, ALC, Broker  
334-567-0924 ext. 205  
334-328-9278 cell  
[Fletcher@GreatSouthernLand.com](mailto:Fletcher@GreatSouthernLand.com)







**LEFT: ATV road  
through planted  
pine near north  
line**

**Game Plot on  
north line**



**LEFT: Looking  
at Brushy Creek  
from ridge  
(near north line)**



**RIGHT: Shooting house and Brushy Creek on left**

**Natural timber on right leads up hill to planted pine**



**Watering hole for game next to game plot**

**RIGHT: Healthy stand of 2002 Planted Pine**





**Smith Lake Waterfront, Inc. Tracts For Sale**  
**Brushy Creek North - 130.6 +/- acres**  
**6,254 +/- Ft on Brushy Creek**  
**Offered For \$270,800 (\$2,075)**

This is not a survey. No guarantees are expressed or implied.  
Acreages and distances calculated in ArcGIS from maps  
and aerial photographs are not warranted by owner or GSL, LLC.  
Timber establishment year is from previous owner and is not warranted.



BCN

Creek



Great  
Southern  
Land

Additional  
248 Acres  
Available

Additional  
127 Acres  
Available





**Smith Lake Waterfront, Inc. Tracts For Sale**  
**Brushy Creek North - 130.6 +/- acres**  
**6,254 +/- Ft on Brushy Creek**  
**Offered For \$270,800 (\$2,075)**

This is not a survey. No guarantees are expressed or implied.  
Acreages and distances calculated in ArcGIS from maps  
and aerial photographs are not warranted by owner or GSL, LLC.  
Timber establishment year is from previous owner and is not warranted.



**BCN**

**6,254**

Additional  
248 Acres  
Available

Additional  
127 Acres  
Available

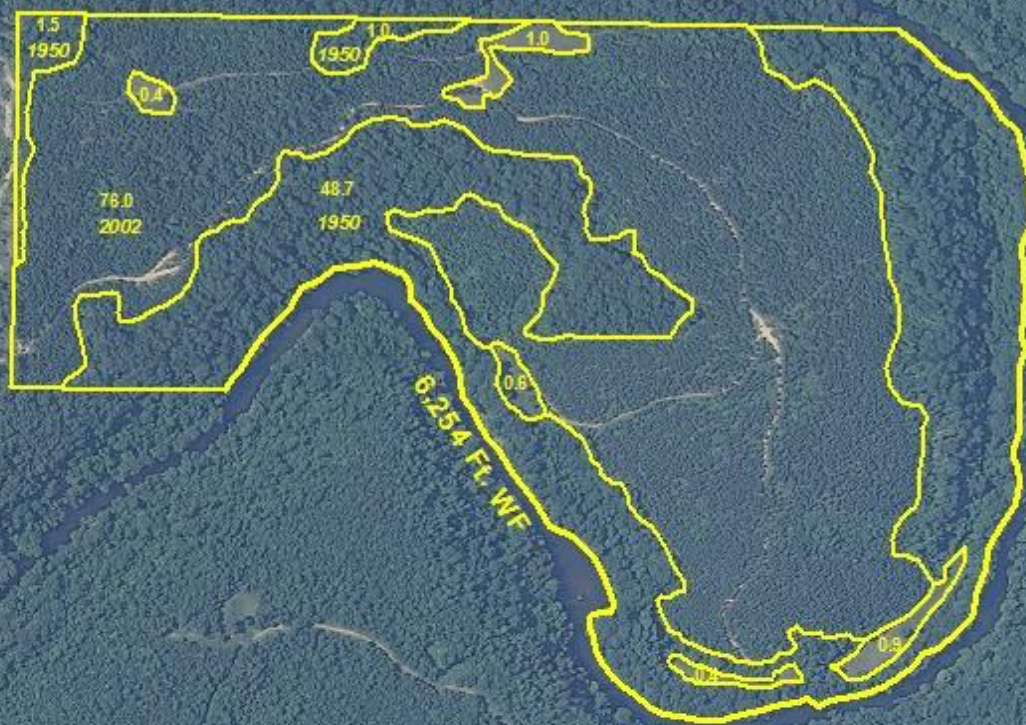


**Great  
Southern  
Land**





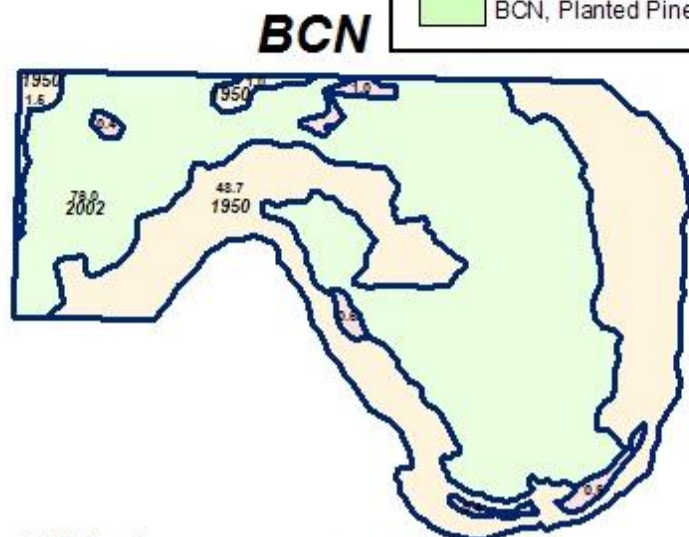
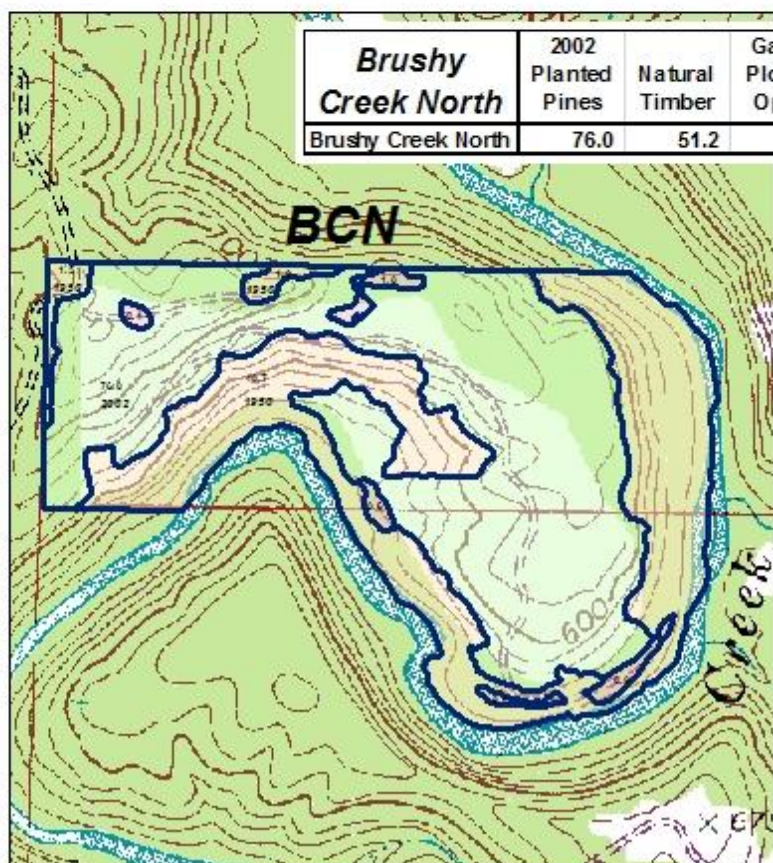
**Smith Lake Waterfront, Inc. Tracts For Sale**  
**Brushy Creek North - 130.6 +/- acres**  
**6,254 +/- Ft on Brushy Creek**  
**Offered For \$270,800 (\$2,075/Ac.)**



<i>Brushy Creek North</i>	2002 Planted Pines	Natural Timber	Game Plots & Open	Roads & ROW	Total Acres	Brushy Creek Frontage
Brushy Creek North	76.0	51.2	3.3	-	130.5	6,254

**All\_Stands  
Group, Type**

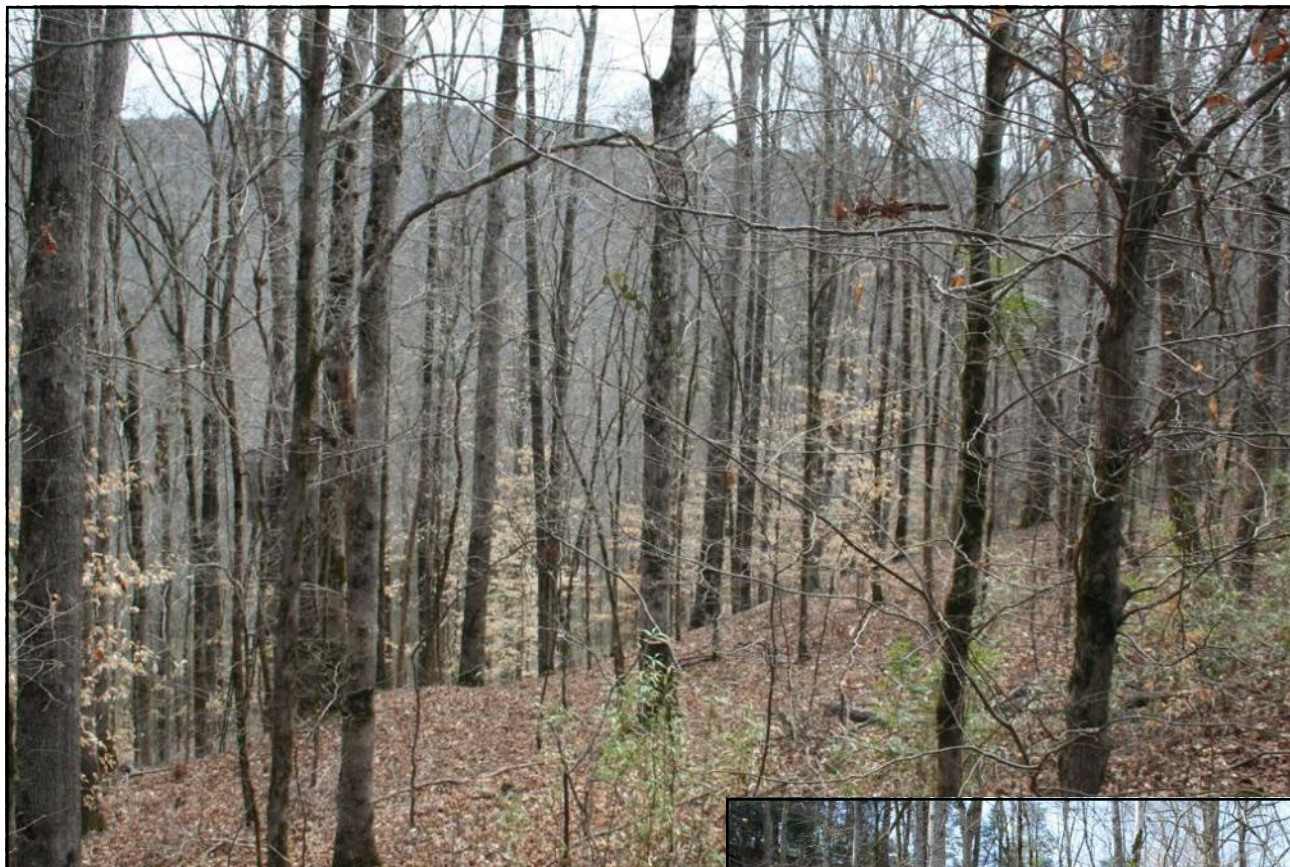
- BCN, Game Plot
- BCN, Natural Timber
- BCN, Planted Pine



**Additional  
127 Acres  
Available**

**Additional  
248 Acres  
Available**





**Natural timber  
along hillside  
between Planted  
Pines and  
Brushy Creek**



**Rock ridge near  
north line seen  
from road along  
Brushy Creek**



**Game plot between  
natural timber on left  
and Brushy Creek  
on right**



