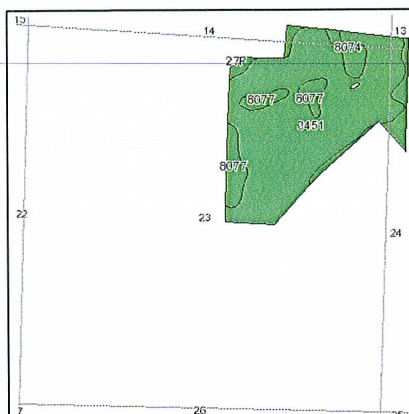
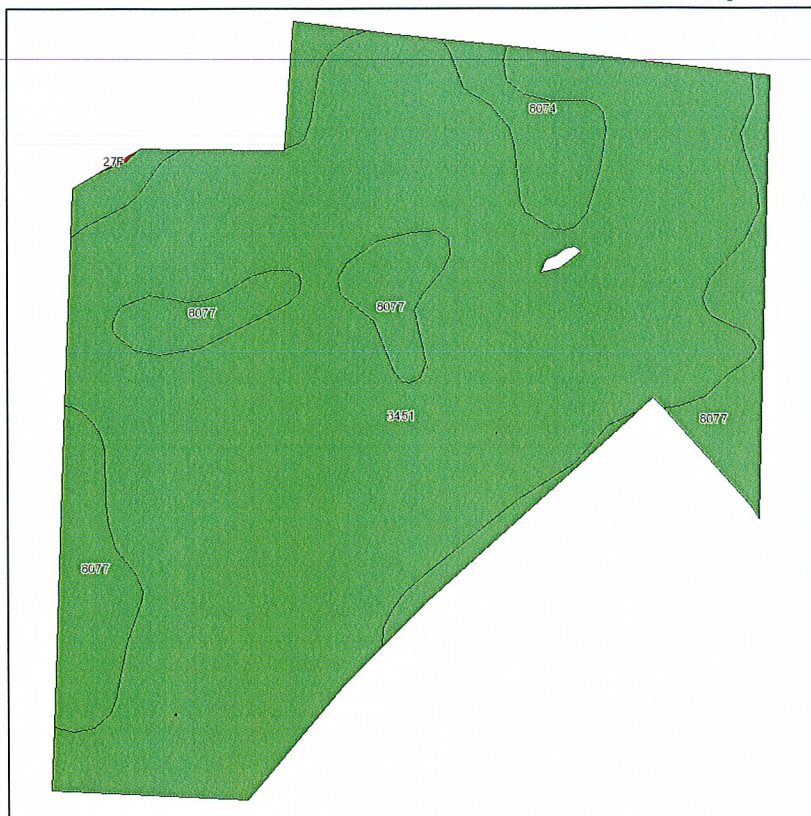


# Soils Map



State: **Illinois**  
 County: **Stark**  
 Location: **023-012N-006E**  
 Township: **Essex**  
 Acres: **118.5**  
 Date: **4/29/2010**

**JOHN LEEZER**  
**Land Specialist**  
 Jim Maloof/Realtor  
 (309) 286-2221

Fsa borders provided by the Farm Service Agency as of May 23, 2008.  
 Soils data provided by USDA and NRCS.  
 PLSS provided by Illinois State Geological Survey.



Code	Soil Description	Acres	Percent of field	Il. State Productivity Index Legend	Corn Bu/A	Soybeans Bu/A
3451	Lawson silt loam, frequently flooded	94.5	79.7%		171	55
8077	Huntsville silt loam, occasionally flooded	17.3	14.6%		174	55
8074	Radford silt loam, occasionally flooded	6.7	5.6%		167	53
Weighted Average					171	54.8

**Table: Optimum Crop Productivity Ratings for Illinois Soil by K.R. Olson and J.M. Lang, Office of Research, ACES, University of Illinois at Champaign-Urbana.** Version: 12/21/2007 table S2rev B811

Crop yields and productivity indices for optimum management (B811) are maintained at the following NRES web site:

<http://www.nres.uiuc.edu/soilproductivity>

\*\* Indexes adjusted for slope and erosion according to Bulletin 811 Table S3