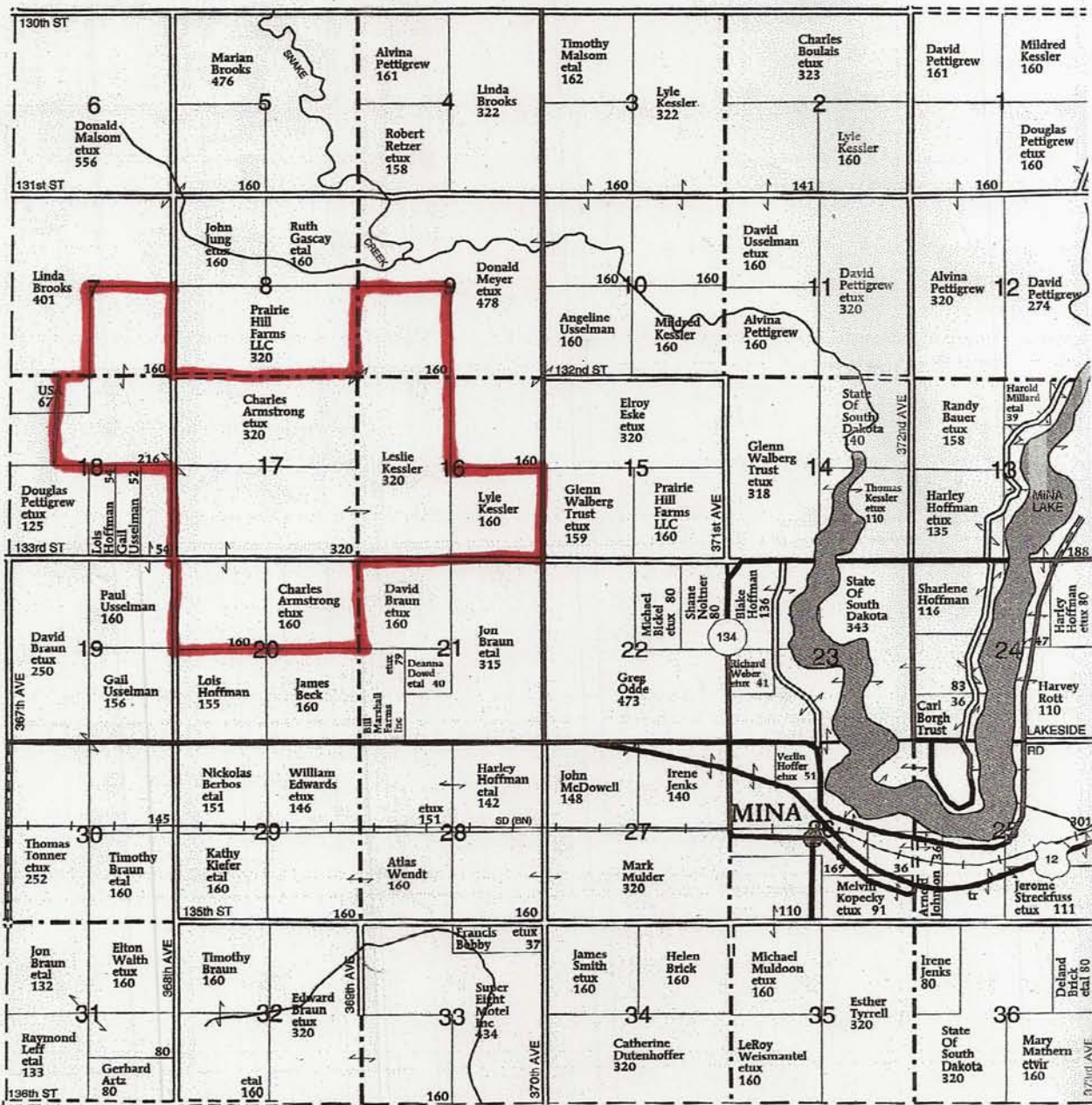
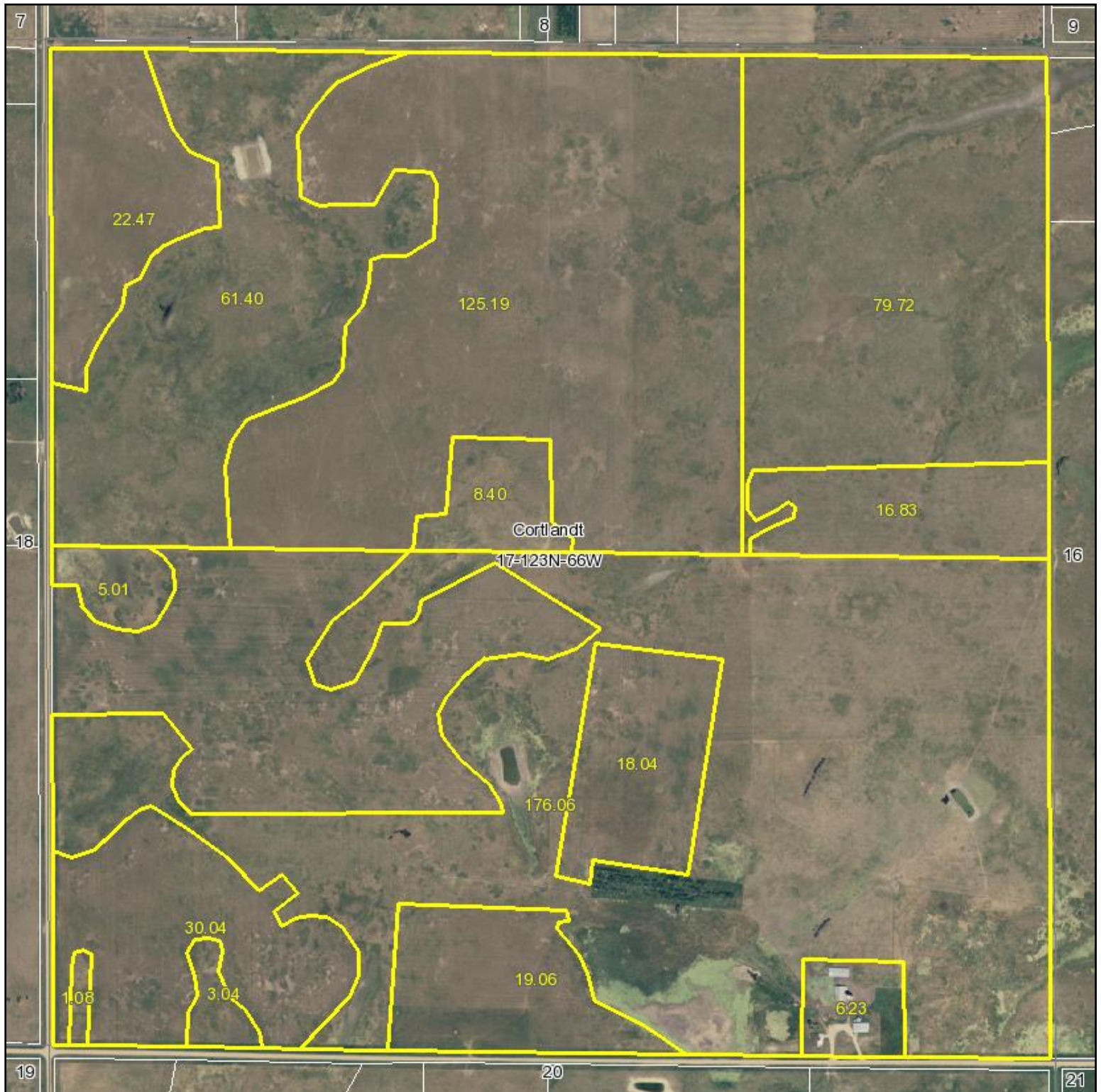


PEMBROOK TWP.



RICHLAND TWP.

Aerial Map



**THORPE REALTY
& AUCTION**

Maps provided by:



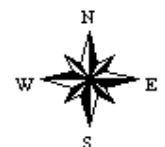
©AgriData, Inc. 2010

www.AgriDataInc.com

**17-123N-66W
Edmunds County
South Dakota**

map center: 45° 28' 8.69, 98° 48' 53.7

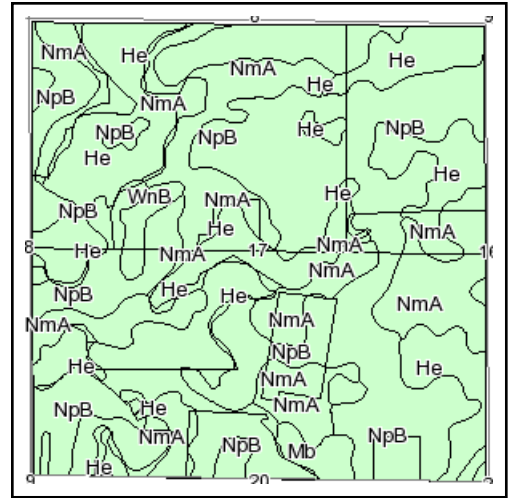
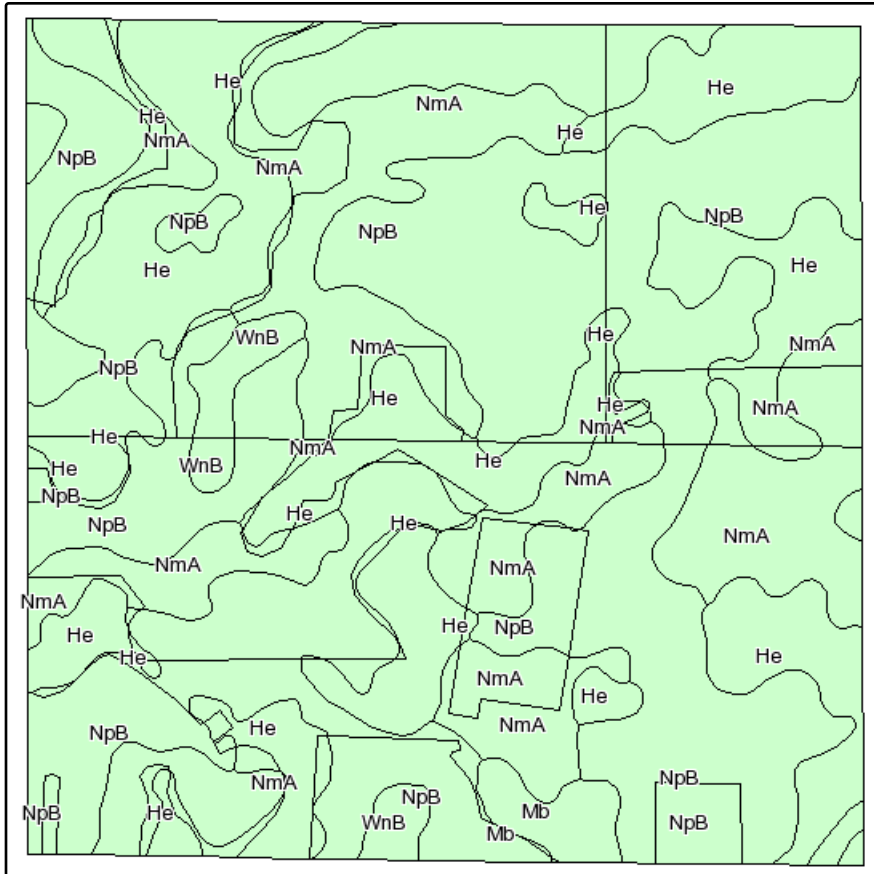
scale: 9955



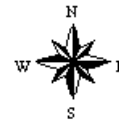
5/5/2010

Field borders provided by Farm Service Agency as of 5/23/2008. Aerial photography provided by Aerial Photography Field Office.

Soils Map



State: **South Dakota**
 County: **Edmunds**
 Location: **017-123N-066W**
 Township: **Cortlandt**
 Acres: **628.6**
 Date: **5/5/2010**



Maps provided by:

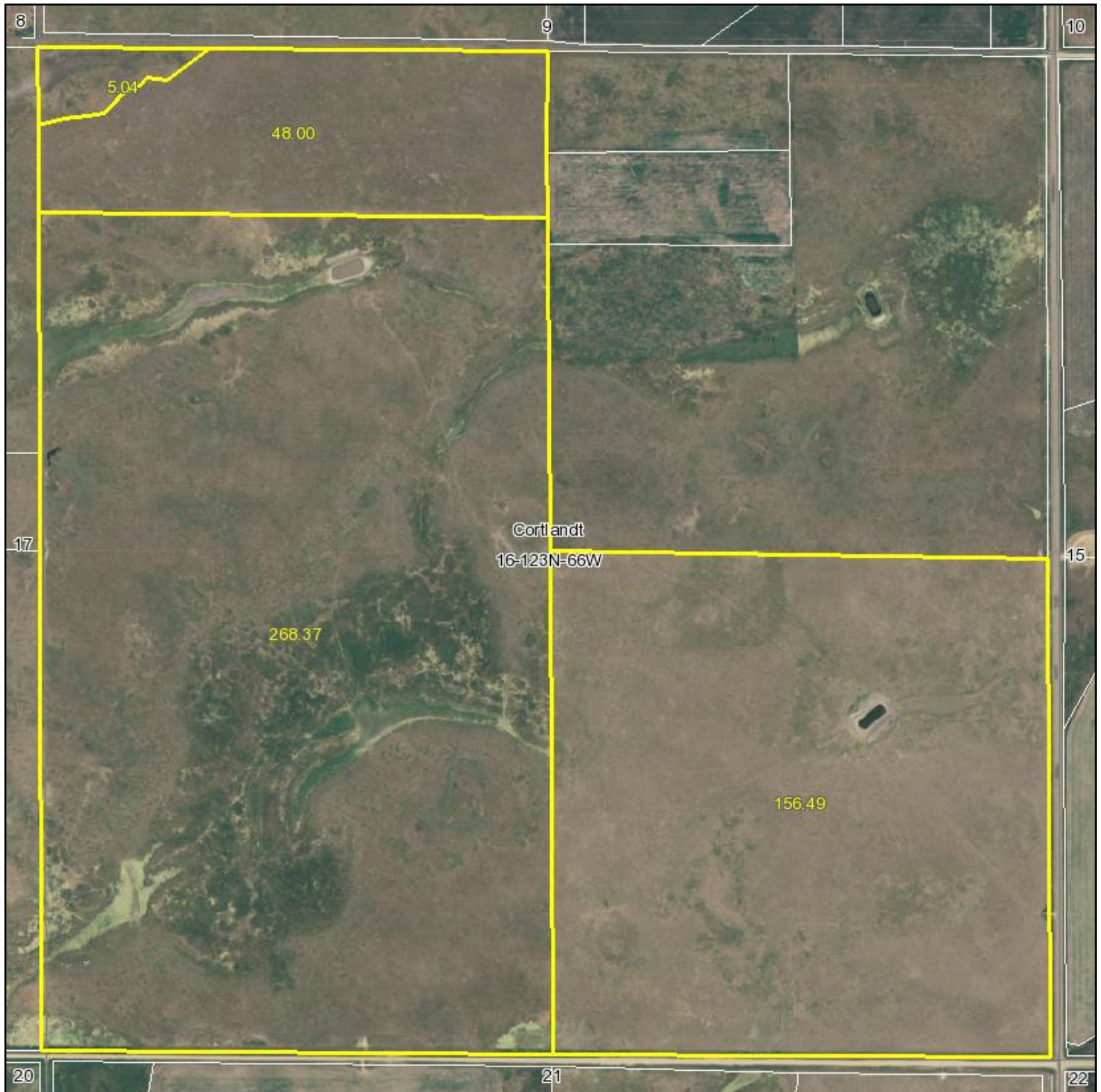


©AgriData, Inc 2008
 www.AgriDataInc.com

Fsa borders provided by the Farm Service Agency as of May 23, 2008.
 Soils data provided by USDA and NRCS.

Code	Soil Description	Acres	Percent of field	Non-Irr Class	Productivity Index	Barley	Crested wheatgrass alfalfa hay	Flax	Oats	Spring wheat	Sunflowers
NpB	Niobell-Noonan loams, 1 to 5 percent slopes	287.8	45.8%	IIIIs	51	39	1.4	12	51	24	1200
He	Heil silt loam	171.9	27.3%	VIIs	14		1.1			8	
NmA	Niobell-Miranda loams, 0 to 3 percent slopes	147.4	23.4%	IVIs	47	42	1.4	13	55	26	1300
WnB	Williams-Bowbells loams, 3 to 6 percent slopes	13.2	2.1%	IIe	81	44	2.3	14	57	27	1350
Mb	Parnell, ponded	8.3	1.3%	VIIIw	6						
Weighted Average					40	28.6	1.3	8.8	37.4	19.8	882.2

Aerial Map



**THORPE REALTY
& AUCTION**

Maps provided by:



©AgriData, Inc. 2010

www.AgriDataInc.com

**16-123N-66W
Edmunds County
South Dakota**

map center: 45° 28' 8.09, 98° 47' 39.55

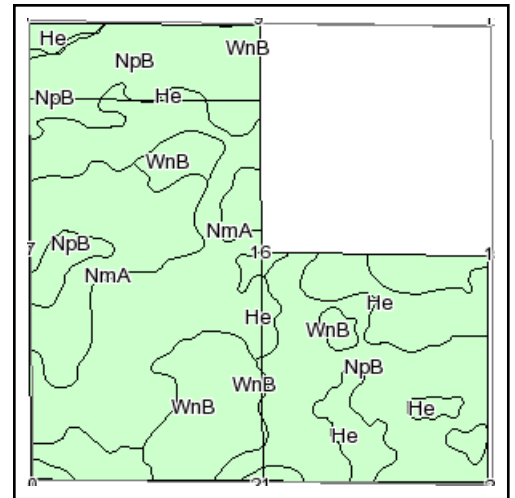
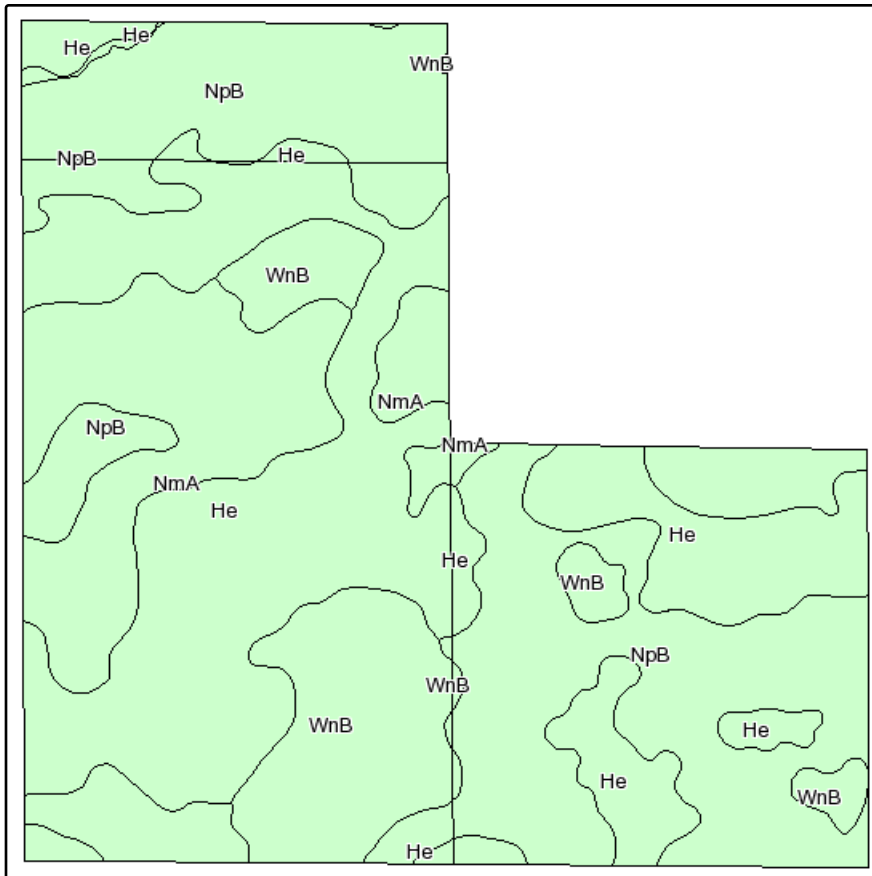
scale: 9933



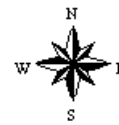
5/5/2010

Field borders provided by Farm Service Agency as of 5/23/2008. Aerial photography provided by Aerial Photography Field Office.

Soils Map



State: **South Dakota**
 County: **Edmunds**
 Location: **016-123N-066W**
 Township: **Cortlandt**
 Acres: **477.9**
 Date: **5/5/2010**



Maps provided by:

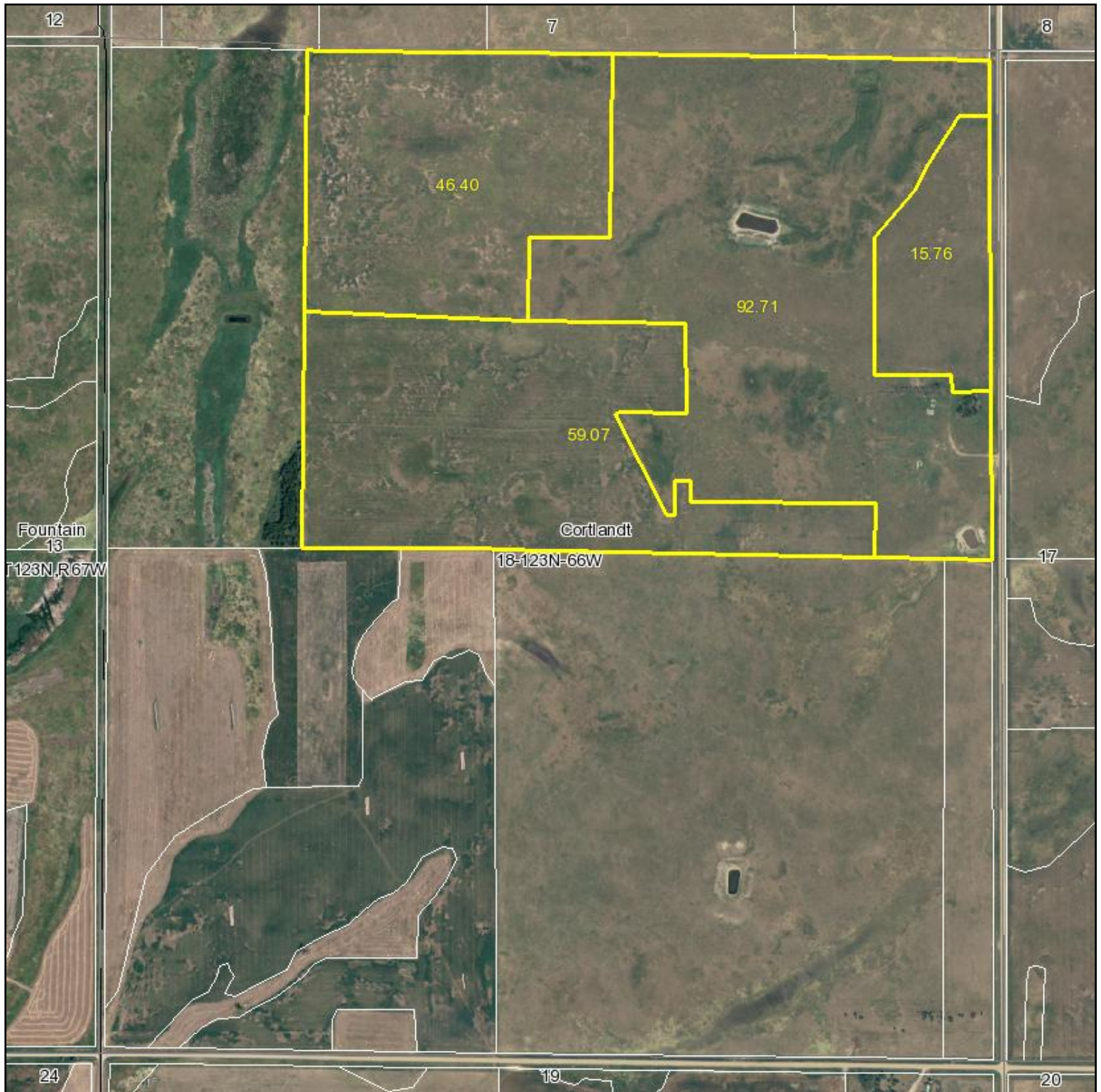


©AgriData, Inc 2008
 www.AgriDataInc.com

Fsa borders provided by the Farm Service Agency as of May 23, 2008.
 Soils data provided by USDA and NRCS.

Code	Soil Description	Acres	Percent of field	Non-Irr Class	Productivity Index	Barley	Crested wheatgrass alfalfa hay	Flax	Oats	Spring wheat	Sunflowers
NpB	Niobell-Noonan loams, 1 to 5 percent slopes	180.1	37.7%	IIIIs	51	39	1.4	12	51	24	1200
He	Heil silt loam	170.8	35.7%	VIIs	14		1.1			8	
NmA	Niobell-Miranda loams, 0 to 3 percent slopes	69.3	14.5%	IVIs	47	42	1.4	13	55	26	1300
WnB	Williams-Bowbells loams, 3 to 6 percent slopes	57.7	12.1%	Ile	81	44	2.3	14	57	27	1350
Weighted Average					40.8	26.1	1.4	8.1	34.1	18.9	804.2

Aerial Map



**THORPE REALTY
& AUCTION**

Maps provided by:



©AgriData, Inc. 2010

www.AgriDataInc.com

**18-123N-66W
Edmunds County
South Dakota**

map center: 45° 28' 9.5, 98° 50' 3.75

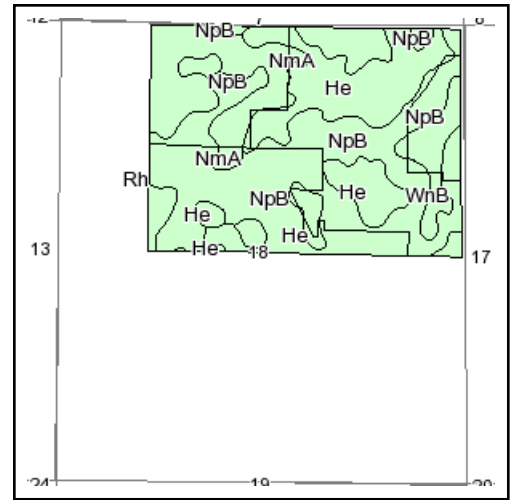
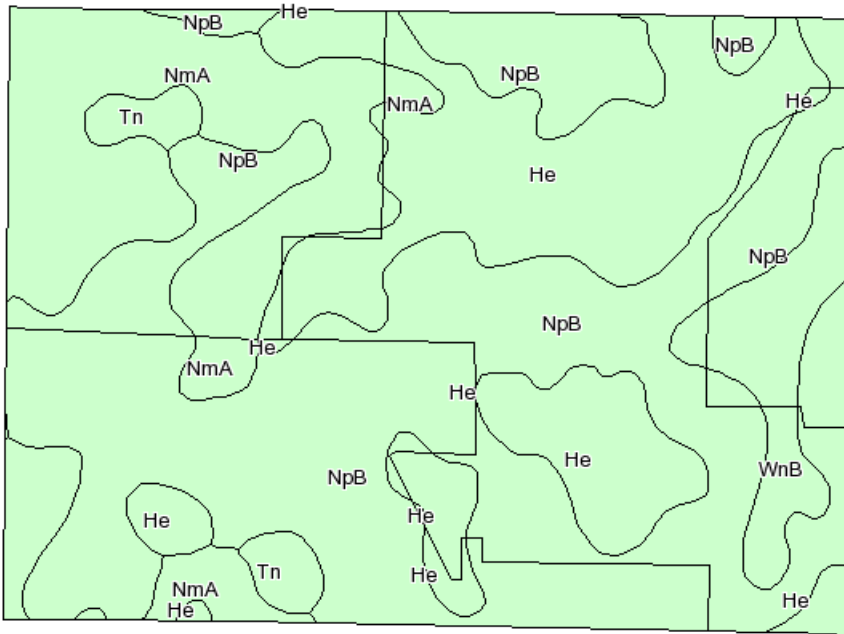
scale: 9913



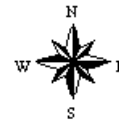
5/5/2010

Field borders provided by Farm Service Agency as of 5/23/2008. Aerial photography provided by Aerial Photography Field Office.

Soils Map



State: **South Dakota**
 County: **Edmunds**
 Location: **018-123N-066W**
 Township: **Cortlandt**
 Acres: **213.9**
 Date: **5/5/2010**



Maps provided by:

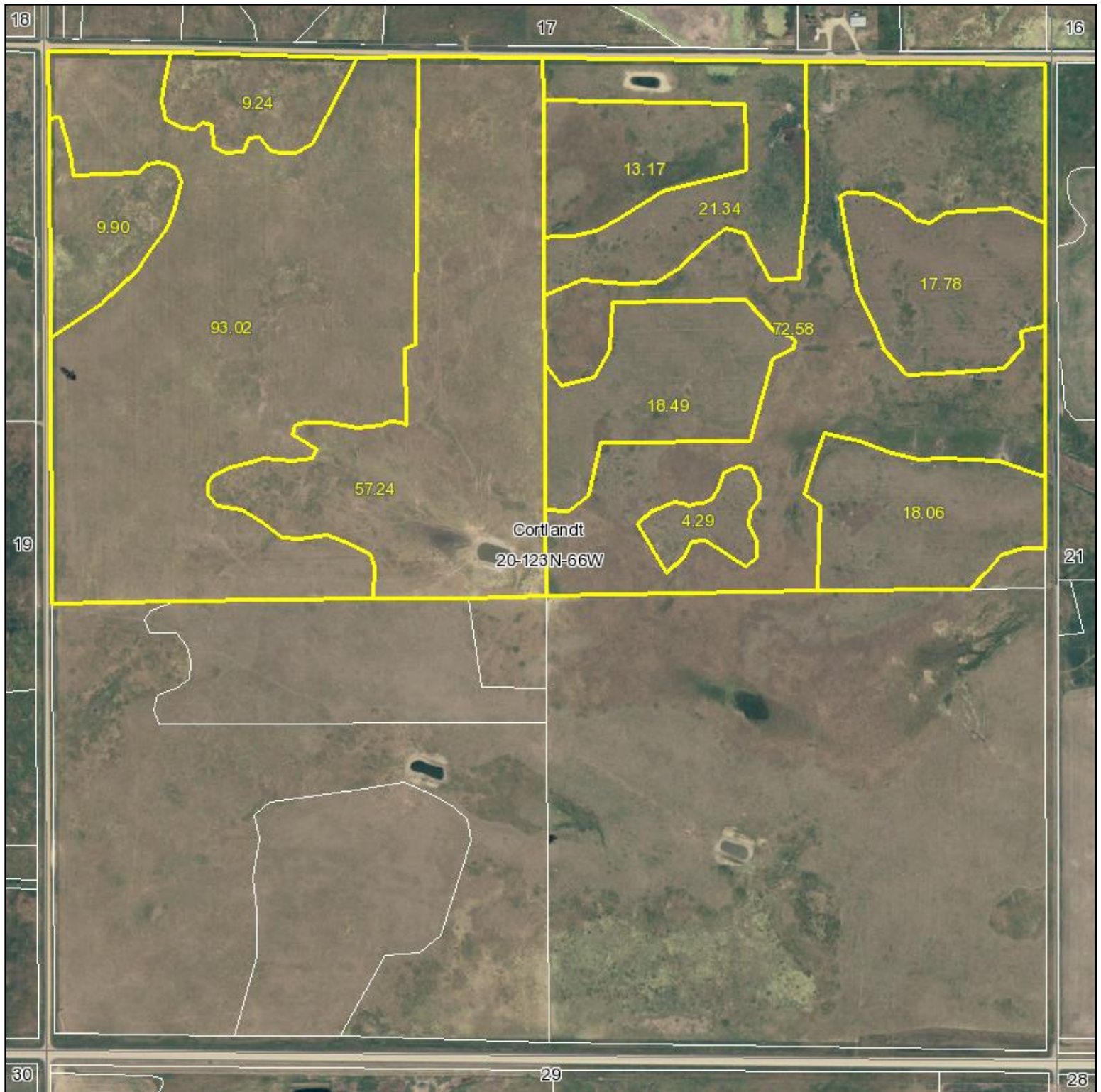


©AgriData, Inc 2008
 www.AgriDataInc.com

Fsa borders provided by the Farm Service Agency as of May 23, 2008.
 Soils data provided by USDA and NRCS.

Code	Soil Description	Acres	Percent of field	Non-Irr Class	Productivity Index	Alfalfa hay	Barley	Corn	Crested wheatgrass alfalfa hay	Flax	Oats	Soybeans	Spring wheat	Sunflowers	T v
NpB	Niobell-Noonan loams, 1 to 5 percent slopes	105.1	49.1%	IIIs	51		39		1.4	12	51		24	1200	
He	Heil silt loam	52.4	24.5%	VIIs	14				1.1				8		
NmA	Niobell-Miranda loams, 0 to 3 percent slopes	41	19.2%	IVs	47		42		1.4	13	55		26	1300	
WnB	Williams-Bowbells loams, 3 to 6 percent slopes	11.2	5.2%	Ile	81		44		2.3	14	57		27	1350	
Tn	Tonka-Nishon silt loams	4.2	2.0%	IVw	50		15				20		10	650	
Weighted Average					42.7	0	29.8	0	1.3	9.1	39	0	20.3	922	

Aerial Map



**THORPE REALTY
& AUCTION**

Maps provided by:



©AgriData, Inc. 2010

www.AgriDataInc.com

**20-123N-66W
Edmunds County
South Dakota**

map center: 45° 27' 16.6, 98° 48' 53.51

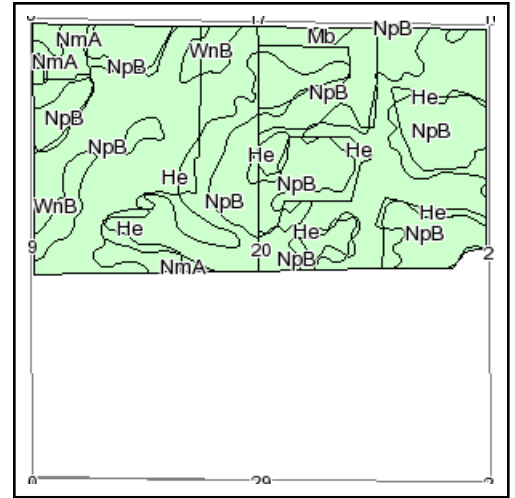
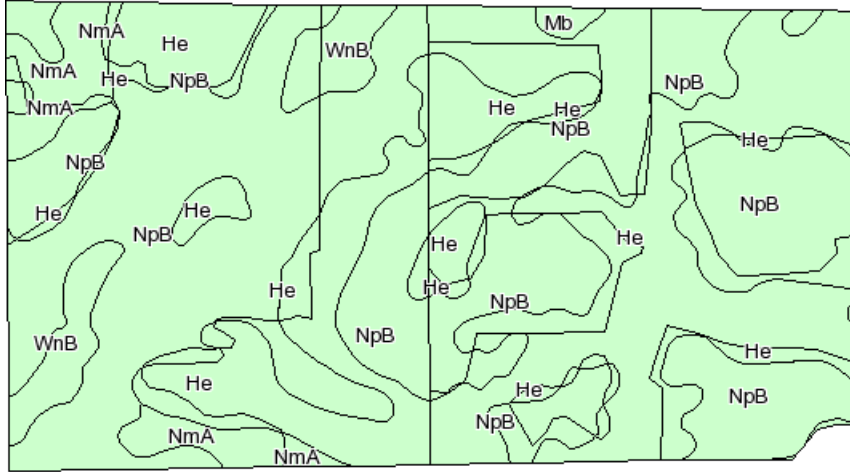
scale: 9937



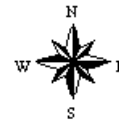
5/5/2010

Field borders provided by Farm Service Agency as of 5/23/2008. Aerial photography provided by Aerial Photography Field Office.

Soils Map



State: **South Dakota**
 County: **Edmunds**
 Location: **020-123N-066W**
 Township: **Cortlandt**
 Acres: **335.1**
 Date: **5/5/2010**



Maps provided by:

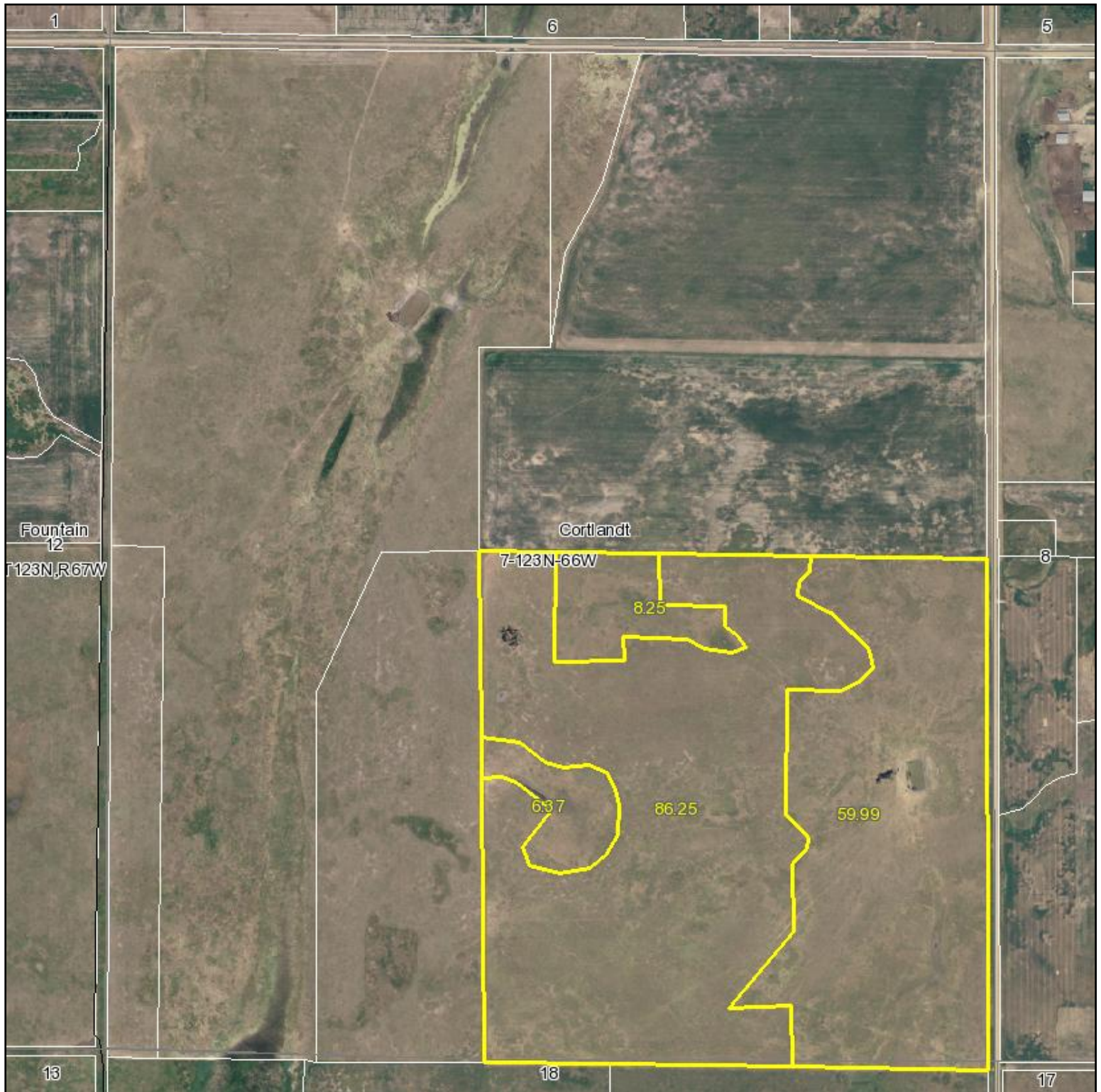


©AgriData, Inc 2008
 www.AgriDataInc.com

Fsa borders provided by the Farm Service Agency as of May 23, 2008.
 Soils data provided by USDA and NRCS.

Code	Soil Description	Acres	Percent of field	Non-Irr Class	Productivity Index	Barley	Crested wheatgrass alfalfa hay	Flax	Oats	Spring wheat	Sunflowers
NpB	Niobell-Noonan loams, 1 to 5 percent slopes	180.9	54.0%	IIIIs	51	39	1.4	12	51	24	1200
He	Heil silt loam	124.8	37.2%	VIIs	14		1.1			8	
NmA	Niobell-Miranda loams, 0 to 3 percent slopes	15.1	4.5%	IVIs	47	42	1.4	13	55	26	1300
WnB	Williams-Bowbells loams, 3 to 6 percent slopes	12.9	3.9%	Ile	81	44	2.3	14	57	27	1350
Mb	Parnell, ponded	1.4	0.4%	VIIIw	6						
Weighted Average					38	24.7	1.3	7.6	32.2	18.2	759.2

Aerial Map



**THORPE REALTY
& AUCTION**

Maps provided by:



©AgriData, Inc. 2010

www.AgriDataInc.com

**7-123N-66W
Edmunds County
South Dakota**

map center: 45° 29' 1.57, 98° 50' 3.41

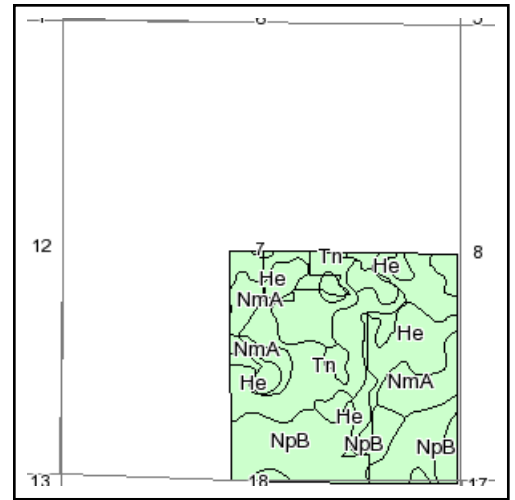
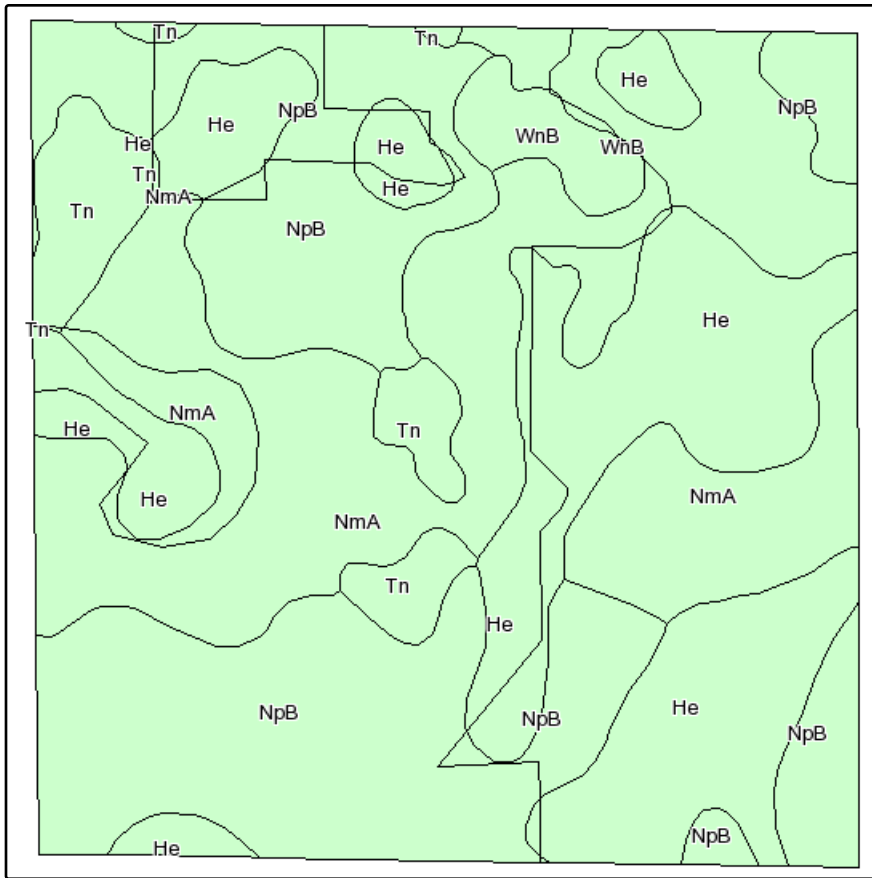
scale: 9894



5/5/2010

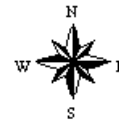
Field borders provided by Farm Service Agency as of 5/23/2008. Aerial photography provided by Aerial Photography Field Office.

Soils Map



State: **South Dakota**
 County: **Edmunds**
 Location: **007-123N-066W**
 Township: **Cortlandt**
 Acres: **160.9**
 Date: **5/5/2010**

**THORPE REALTY
& AUCTION**



Maps provided by:

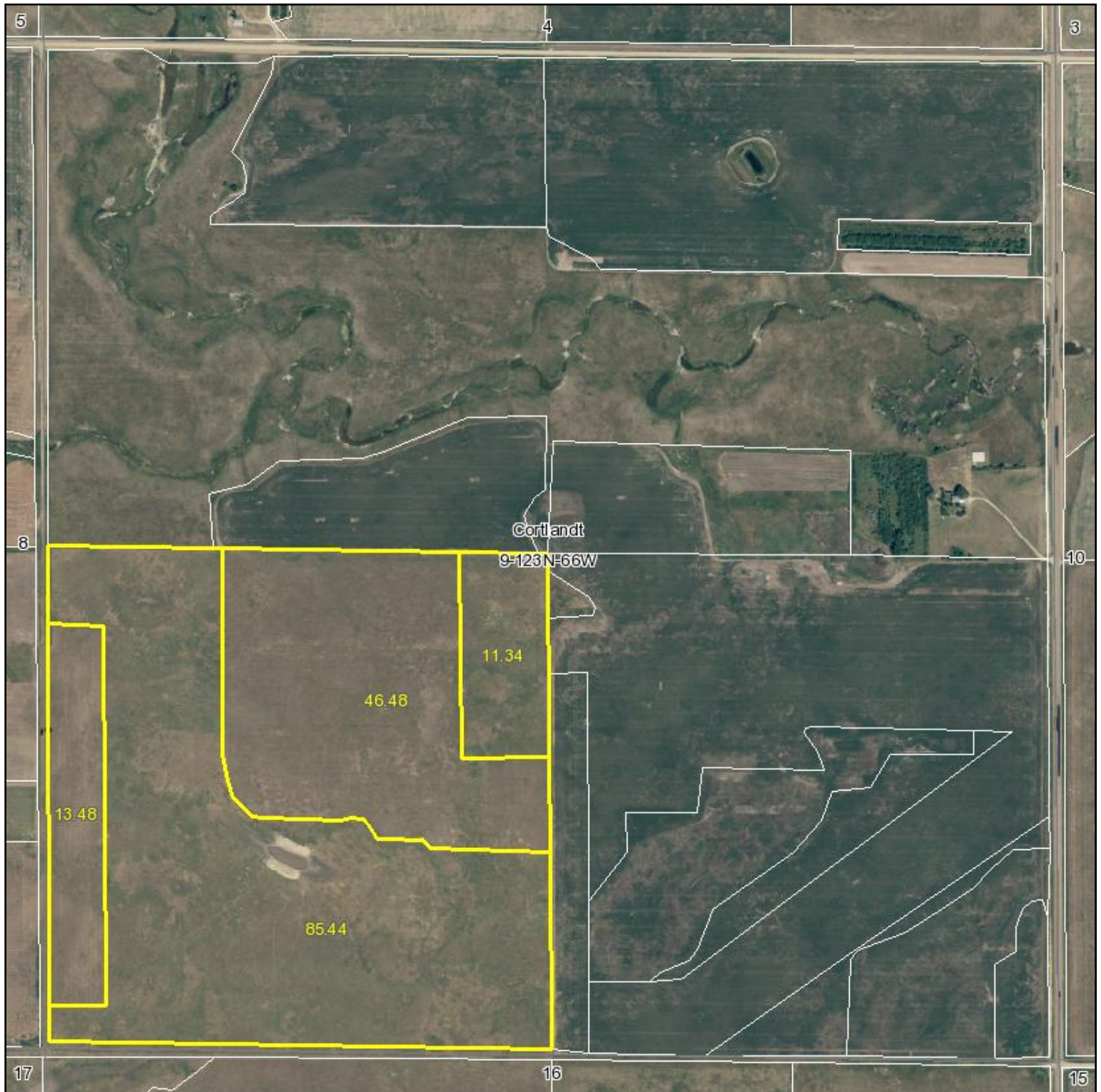


©AgriData, Inc 2008
 www.AgriDataInc.com

Fsa borders provided by the Farm Service Agency as of May 23, 2008.
 Soils data provided by USDA and NRCS.

Code	Soil Description	Acres	Percent of field	Non-Irr Class	Productivity Index	Barley	Crested wheatgrass alfalfa hay	Flax	Oats	Spring wheat	Sunflowers
NpB	Niobell-Noonan loams, 1 to 5 percent slopes	53.6	33.4%	IIIIs	51	39	1.4	12	51	24	1200
NmA	Niobell-Miranda loams, 0 to 3 percent slopes	51.6	32.1%	IVs	47	42	1.4	13	55	26	1300
He	Heil silt loam	43.3	26.9%	VIIs	14		1.1			8	
Tn	Tonka-Nishon silt loams	8.9	5.5%	IVw	50	15			20	10	650
WnB	Williams-Bowbells loams, 3 to 6 percent slopes	3.5	2.2%	Ile	81	44	2.3	14	57	27	1350
Weighted Average					40.4	28.3	1.3	8.5	37	19.7	883.6

Aerial Map



**THORPE REALTY
& AUCTION**

Maps provided by:



©AgriData, Inc. 2010

www.AgriDataInc.com

**9-123N-66W
Edmunds County
South Dakota**

map center: 45° 29' 0.3, 98° 47' 39.69

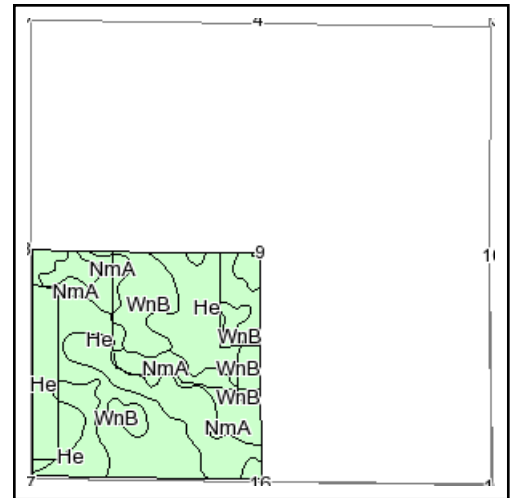
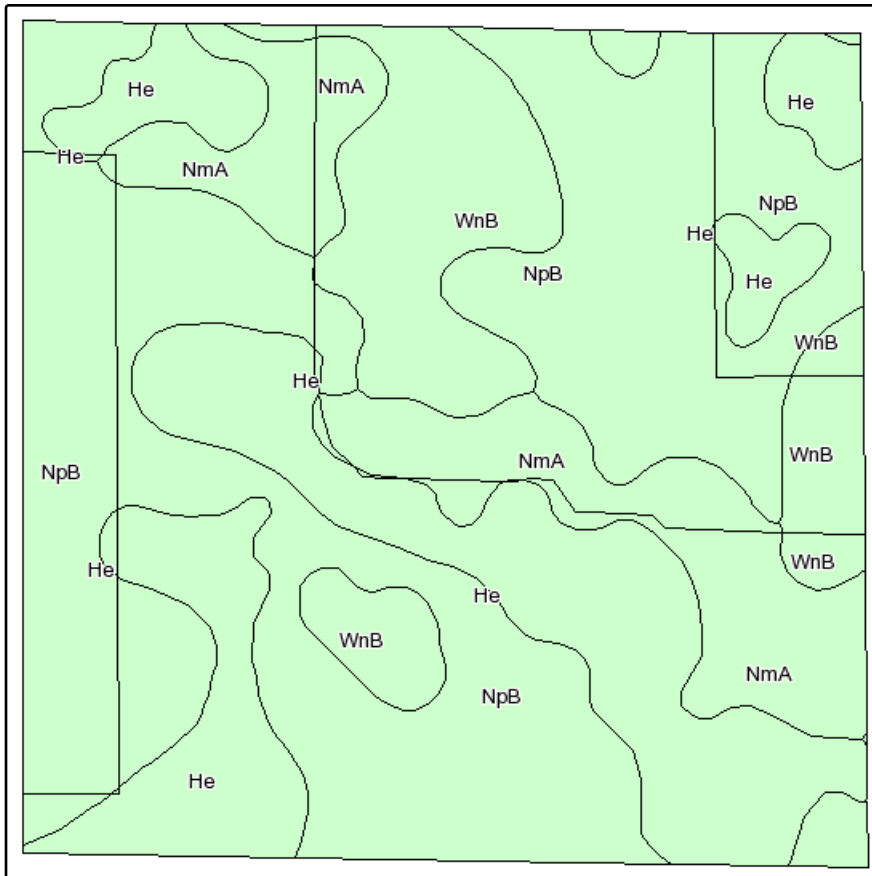
scale: 9950



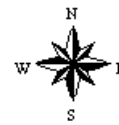
5/5/2010

Field borders provided by Farm Service Agency as of 5/23/2008. Aerial photography provided by Aerial Photography Field Office.

Soils Map



State: **South Dakota**
 County: **Edmunds**
 Location: **009-123N-066W**
 Township: **Cortlandt**
 Acres: **156.7**
 Date: **5/5/2010**



Maps provided by:



©AgriData, Inc 2008
 www.AgriDataInc.com

Fsa borders provided by the Farm Service Agency as of May 23, 2008.
 Soils data provided by USDA and NRCS.

Code	Soil Description	Acres	Percent of field	Non-Irr Class	Productivity Index	Barley	Crested wheatgrass alfalfa hay	Flax	Oats	Spring wheat	Sunflowers
NpB	Niobell-Noonan loams, 1 to 5 percent slopes	74.7	47.7%	IIIs	51	39	1.4	12	51	24	1200
He	Heil silt loam	38.7	24.7%	VIIs	14		1.1			8	
WnB	Williams-Bowbells loams, 3 to 6 percent slopes	22.1	14.1%	IIs	81	44	2.3	14	57	27	1350
NmA	Niobell-Miranda loams, 0 to 3 percent slopes	21.2	13.5%	IVs	47	42	1.4	13	55	26	1300
Weighted Average					45.6	30.5	1.5	9.5	39.8	20.7	938.2

SE ¼ 7-123-66, 160 taxable acres \$904.94
NE ¼ 18-123-66, 160 taxable acres \$959.76
E ½ of the NW ¼ 18-123-66, 56 taxable acres \$336.70
NE ¼ 17-123-66, 160 taxable acres \$918.82
E ½ of the NW ¼ 17-123-66, 80 taxable acres \$479.80
W ½ of the NW ¼ 17-123-66, 80 taxable acres \$440.58
SE ¼ 17-123-66, 160 taxable acres \$1,447.48
SW ¼ 17-123-66, 160 taxable acres \$934.44
NW ¼ 20-123-66, 160 taxable acres \$964.72
NE ¼ 20-123-66, 160 taxable acres \$859.16
SW ¼ 9-123-66, 160 taxable acres \$994.42
NW ¼ 16-123-66, 160 taxable acres \$953.48
SW ¼ 16-123-66, 160 taxable acres \$982.64
SE ¼ 16-123-66, 160 taxable acres \$962.28

Total Taxable acres 1976, total taxes \$12,139.22