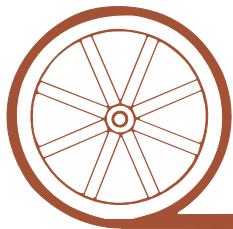


LAND FOR SALE

Lake McConaughy Pasture



- Location:** 6 miles West of Ogallala, NE on Hwy 26 and then 1/4 mile north on trail road.
- Legal Description:** Section 8-T14N-R39W of the 6th P.M. Keith County, NE.
- Acres:** 634.07 Tax Assessed Acres
- Taxes:** 2009 Taxes Payable in 2010—\$3,278.16
- Water:** There is a windmill with a 24' tank and an 18' tank in the southeast quarter of the section and a capped well in the NW1/4 of the Section.
- Price:** \$310,000.00
- Comments:** Excellent location on south side of Lake McConaughy with future housing development potential. Has good grass cover with good deer and prairie dog hunting.
- Contact:** **Mike Polk, Listing Agent: 308-539-4446 or email: mike@agriaffiliates.com**
Loren Johnson, Bruce Dodson, Jerry Weaver, Duane McClain, Jerry Sloan or Roger Luehrs



Offered Exclusively By:

AGRI AFFILIATES, INC.

...Providing Farm - Ranch Real Estate Services...

NORTH PLATTE OFFICE

P.O. Box 1166

I-80 & US Hwy 83

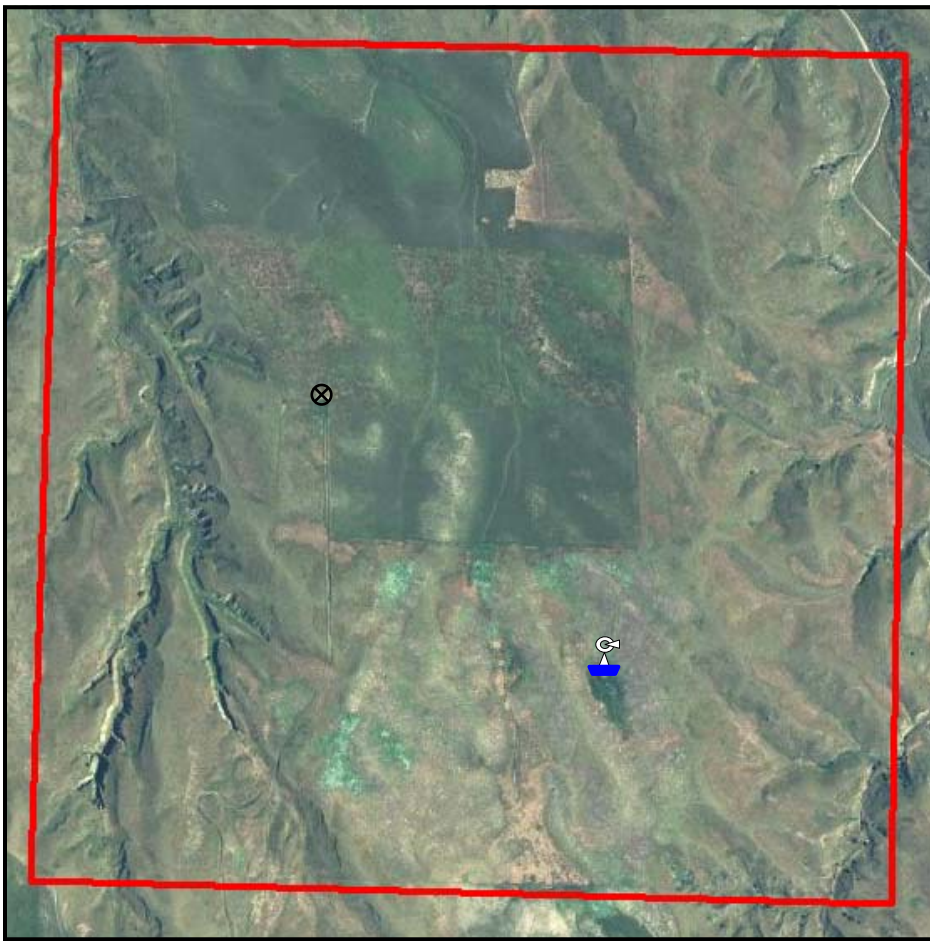
North Platte, NE 69103

www.agriaffiliates.com


(308) 534-9240


Telecopier (308) 534-9244

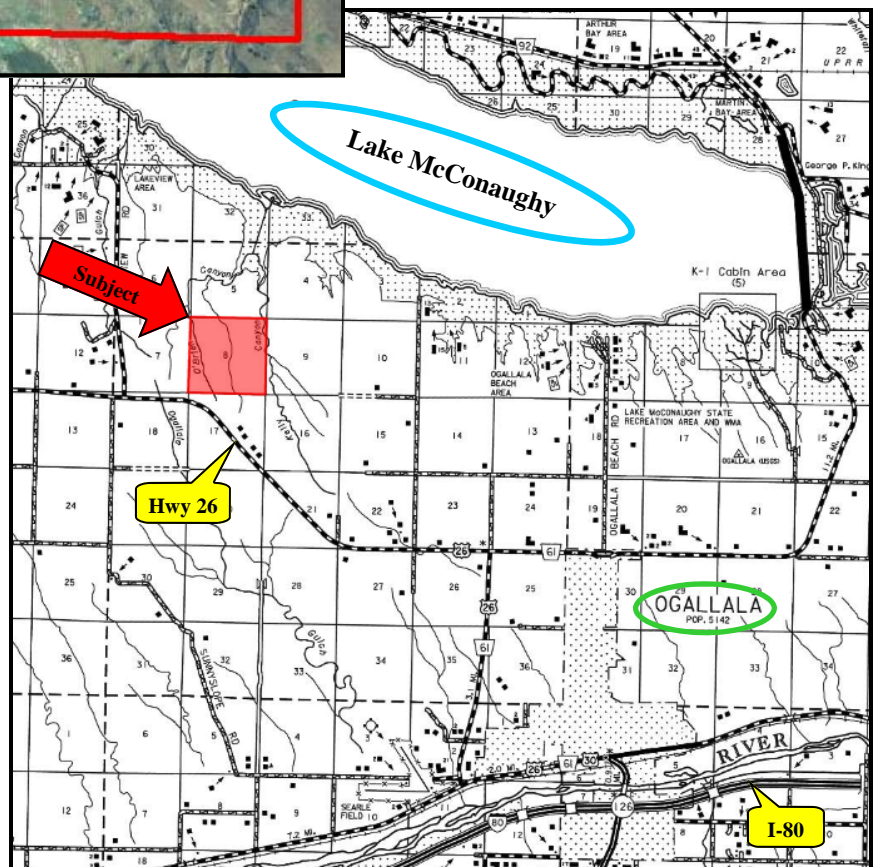
Information contained herein was obtained from sources deemed reliable. We have no reason to doubt the accuracy, but we do not guarantee it. Prospective Buyers should verify all information, including items of income and expense. All maps provided by Agri Affiliates, Inc. are approximations only, to be used as a general guideline, and not intended as survey accurate.



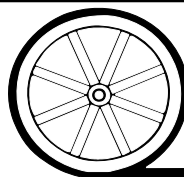
Symbol Legend

 Windmill & Tanks

 Capped Well



All maps provided by Agri Affiliates, Inc. are approximations only, to be used as a general guideline, and not intended as survey accurate.



AGRI AFFILIATES, INC.
... Providing Farm - Ranch Real Estate Services. ...