

**RANGER CREEK GUEST RANCH IN THE BIG HORN MOUNTAINS**  
***SPECTACULAR WYOMING!***



**Main Lodge—**



**— Cabins hidden in the trees**







# **RANGER CREEK GUEST RANCH**

## **“TOP OF THE BIG HORN MOUNTAINS” Shell, Wyoming**

**THE RANCH—** *“Where the Spirit of the Old West Remains”*

The Ranger Creek Guest Ranch is located in the Big Horn National Forest, at an elevation of 8,300 feet, where on a clear night you can see forever. Forests of quaking aspen, lodge pole pine and spruce overlooking meadows of wildflowers, with plenty of deer, elk, moose and other wildlife in the Cloud Peak Wilderness area.

The lodge houses the kitchen, main dining area, and the great room, where you will be surrounded by antiques, family heirlooms and trophies reminiscent of the Old West. Relax and enjoy a cozy fire, read a good book, or plunk out a tune on the piano. Sitting on the porch of the main lodge you will enjoy magnificent views unlike any you have ever experienced.

Weekly activities include meals cooked outdoors. Activities can include a breakfast ride, lunch along Shell Creek, overnights and campfires.

After a day riding and enjoying the Ranch activities, retire to one of the log cabins named after local landmarks and characters of the Old West. Each of our cabins will accommodate 4 to 6 guests.. They all have private bathrooms, western accents, antiques, and handmade quilts, creating a comfortable and very livable atmosphere.

Sprinkled among the trees behind the main lodge, the cabins provide a quiet place to retreat to. As one guest commented, “It’s so quiet, I can’t sleep!”

### **LOCATION:**

The Ranger Creek Guest Ranch, overlooking Shell Canyon, is deep within the Big Horn National Forest. Horseback riding is the main activity for guests who have come from all over the world to enjoy the charm and western hospitality Ranger Creek has to offer. Trail rides directly out of the ranch explore the Big Horn National Forest and Cloud Peak Wilderness areas, which offer spectacular views, and numerous opportunities for photography and wildlife viewing. Guests may also enjoy a trip to Cody, Wyoming, the Buffalo Bill Historical Center and the Cody Nite Rodeo, only 2 hours to the west. Sheridan, Wyoming is only an hour to the east, and Billings, Montana is 2 hours to the north.

### **OTHER ACTIVITIES:**

For those who don’t like to ride or just want to take a break from riding, Ranger Creek is only minutes away from some of the best trout fishing in the Big Horns. From the high country free flowing streams full of rainbow and brook trout to the lower elevations where brown and cutthroat trout prosper, the Ranch offers a variety of fishing for the serious angler’s enjoyment.





Guests also have the option of arranging a guided tour for visiting many of the historical sites near the Ranch. Or, for the adventurous, get ready for whitewater rafting or just floating down the beautiful Yellowstone River or Shoshone River.

In the early fall, hunters can take to the mountains to pursue a wide variety of big game, including black bear, mountain lion, elk (wapiti), mule and white-tail deer and moose.

Winter brings on the adventure of experiencing the mountains on snowmobiles or cross-country skis. The Ranch is located on the Big Horn Mountains/North Central Wyoming trail system, 391 miles of trails, of which 342 miles are groomed snowmobile trails. Located along the Paint Rock Trail connecting the Burgess Junction Trail System with the Buffalo/Ten Sleep Trail System, the combined systems make for plenty of off-trail riding.

Located on the P Trail, Ranger Creek is a central location for easy access to the lodge loop in the north and the lodges in the south. Since Ranger Creek sits in a more secluded area of the mountains, many guests prefer the less hectic atmosphere created here. In addition, this area provides for less traveled trails and untouched meadows to play in. Fuel and other supplies are available at the ranch.

Other winter activities include cross-country skiing and snow shoeing, or just relax in the lodge and read a good book or watch a movie.

#### **AIR SERVICE:**

Cody, Wyoming and Sheridan, Wyoming both offer good regional connections. Billings, Montana is somewhat larger and has an even broader selection of flights.

#### **SPECIAL USE PERMIT:**

The Big Horn National Forest has permitted this lodge for about 65 years. The permit runs for 20-year segments. The buildings and corral area are on a specific 22-acre site. The lodge owner has use of hundreds of thousands of acres, spectacular, unique, remote; they all apply to the wonderland. There is also a grazing permit on the land surrounding the ranch for ranch horses.

#### **REMINDER:**

The offering does not include any real property at the ranch site. Personal property and special use permits are being purchased. The Big Horn National Forest must approve the transaction. This, obviously, involves some extra paperwork, but it will be worth it. The home in Greybull is on deeded land and will transfer as part of the final transaction.

#### **BROKER'S NOTE:**

This very special business will make a great family operation. Well-established and fully equipped to help get a new owner off to a good running start.

Contact BOB BOLE for further details on this wonderful property.

307-587-8014 or email Bob at [Bob@CowboyRealty.net](mailto:Bob@CowboyRealty.net)

**PRICE: \$895,000 US FUNDS**

Information on this property was obtained from sources deemed reliable but is not guaranteed by either Bob Bole, Cowboy Realty, or the seller. This offering is subject to correction, withdrawal, prior sale, or price change without notice.





One of those very special  
cabins

Rustic—Modern

Lodge Dining Area

Looks out over a  
spectacular  
mountain meadow.



See the Lodge?  
It's there!

You are truly  
In the mountains!

**Wyoming— Somewhere very special**

# Cowboy Realty—Bob Bole



Newly built bar

Warm and comfortable  
setting

---

Full service liquor license

**RANGER CREEK  
GUEST RANCH**



Lodge—Upstairs  
Living Quarters

---

Can be one or two rooms



# Cowboy Realty—Bob Bole



SNOWMOBILES READY TO GO!

GAS—FOOD—LODGING—

WHAT MORE COULD BE ASKED?

SPECTACULAR MOUNTAIN  
SCENERY—  
- PERFECT FOR SNOWMOBILING  
OR OTHER  
WINTER OUTDOOR ACTIVITIES.



THE BIG HORN  
MOUNTAINS

Go & Go & Go ...

## WINTER WONDERLAND

# **RANGER CREEK GUEST RANCH**



**HORSES AND  
MOUNTAINS -  
WHAT A FANTASTIC  
COMBINATION!!!**

**ENJOY MOUNTAINS AND MORE  
MOUNTAINS!**

**..."A VERY SPECIAL PLACE."**



**RANGER CREEK  
GUEST RANCH**



# **RANGER CREEK GUEST RANCH**



**ENTRANCE TO PARADISE**

**MAGNIFICENT FIREPLACE IN LODGE  
GREAT PLACE TO MEET,  
KICK BACK AND RELAX.**



**COMMERCIAL KITCHEN**

**FULLY EQUIPPED AND CAN  
REALLY PUT OUT A LOT OF  
QUALITY MEALS...**



## **RANGER CREEK HOME IN GREYBULL, WYOMING**

**3 BEDROOMS  
LARGE LIVING ROOM  
FAMILY ROOM**

**GREAT SPOT TO HEAD FOR  
WHEN YOU NEED TO BE OFF  
THE MOUNTAIN.**



### **ROOM FOR HORSES**

**We don't get heavy  
winters here—but  
some white stuff finds  
us.**

**Bob Bole—Cowboy Realty—(307) 587-8014 [Bob@CowboyRealty.net](mailto:Bob@CowboyRealty.net)**





**RANGER CREEK  
GREYBULL, WYOMING  
HOME**

**GOOD ACCESS—  
CLOSE TO SHOPPING**

**LOTS OF SPACE  
FOR THE FAMILY  
OR  
GREAT RENTAL  
PROPERTY**



**SCHOOL BUS  
COMES RIGHT  
DOWN THE  
HIGHWAY**

**Bob Bole—Cowboy Realty—(307) 587-8014 [Bob@CowboyRealty.net](mailto:Bob@CowboyRealty.net)**



## **RANGER CREEK GUEST RANCH**

### **Some interesting information and common questions**

#### **Basic Ranch Information:**

Located in the Bighorn National Forest, west of Sheridan, WY, and 3 hours east of the entrance to Yellowstone National Park. There is a main lodge and 5 guest cabins (accommodating 5-6 guests). The elevation of the ranch is 8,300 feet. Several creeks run through the area and many lakes are located nearby.

### **QUESTIONS TYPICALLY ASKED:**

*What are your rates?*

Refer to rate schedule.

*Are rates all-inclusive?*

Yes. On the American Plan (includes all services at the Ranch.) - but options are available even for just a day.

*Are there special rates for families, children, seniors, corporations or groups?*

Families—No, other than groups, such as reunions, etc.

Children—Yes, see rate schedule.

Seniors—No.

Corporations or groups—Yes, need to obtain details of outings.

*Besides state and local taxes, what do your rates not include? What is the tipping policy?*

Rates include everything with the exception of taxes and gratuity, which are both paid separately.

### **VACATIONING WITH CHILDREN**

*What age must children be to ride?*

Typically at 6 years old, but still depending on ability.

*Is child care provided, and to what extent?*

No. Bring your own baby-sitter at 50% off the rates.

*Is this a child-oriented ranch?*

Yes. "Little Pardoner's Program" designed for children.

### **HORSES AND RIDING**

*Are riding lessons available?*

Yes. Time permitting.

*What kind of riding program does the Ranch have?*

Program caters to all levels of riding (beginners to advance).

*Is it open-meadow riding, or head to tail mountain-trail riding?*

Ranch and surrounding area accommodates both types of riding.

*Is the program best suited for beginners, or are there opportunities for intermediate and advanced riders too?*

Opportunities for all.

*Do you need your own cowboy boots, or is there a boot rental program?*

You will need all of your own personal gear and clothing.

*Do you get the same horse all week?*

Yes. You will get to bond with your horse.

*Can you brush and saddle your own horse?*

Yes. With the assistance of the Ranch wranglers.



*Do the owners/managers take part in the riding program?*

Yes. Most definitely.

*How long are typical rides?*

Rides range anywhere from an hour to a half to all day.

*If you are a medium or advanced rider, can you trot or lope?*

Yes. In appropriate areas.

*How many wranglers and guests go out on rides at a time?*

Typically anywhere between 4-8 riders on a ride.

## **MISCELLANEOUS**

*Is there a minimum length of stay?*

No, but packages can be arranged.

*Will the Ranch cater to special diets?*

Yes. With prior arrangements.

*Will you send a clothing/equipment list?*

Yes.

*Does the Ranch provide equipment?*

Yes. Everything with the exception of personal gear.

*Should we buy a fishing license before we arrive?*

Yes.

*What will the weather be like in the Summer?*

Typically in the 70's and 80's during the day, cool at night.

*Can we buy sundry items at the Ranch?*

Some, but very limited.

*Do you provide airport, train, or bus pickup?*

Yes. Pickup at the Sheridan Airport and other places with prior arrangements.

*Do you recommend rental cars?*

Yes. If you want to do any sightseeing or travel from the Ranch.

*Are laundry facilities available?*

Yes.

*Is liquor provided?*

Yes. The Ranch has a full service liquor license.

*Are pets allowed?*

No, and no exceptions.

*What is the altitude of the Ranch?*

8,300 feet elevation.

*Are there wheelchair facilities?*

Yes.

*Is smoking permitted?*

Not in the facilities.

**LOOKING AT THE RANCH  
SETTING FROM THE  
CORRAL/BARN AREA.**





# COWBOY REALTY

BOB BOLE  
1737 Sheridan Ave., Ste. 302 Cody, WY 82414  
307-587-8014 Email: bob@cowboyrealty.net

VISUAL AID ONLY

Not to Scale

Approximate

Property

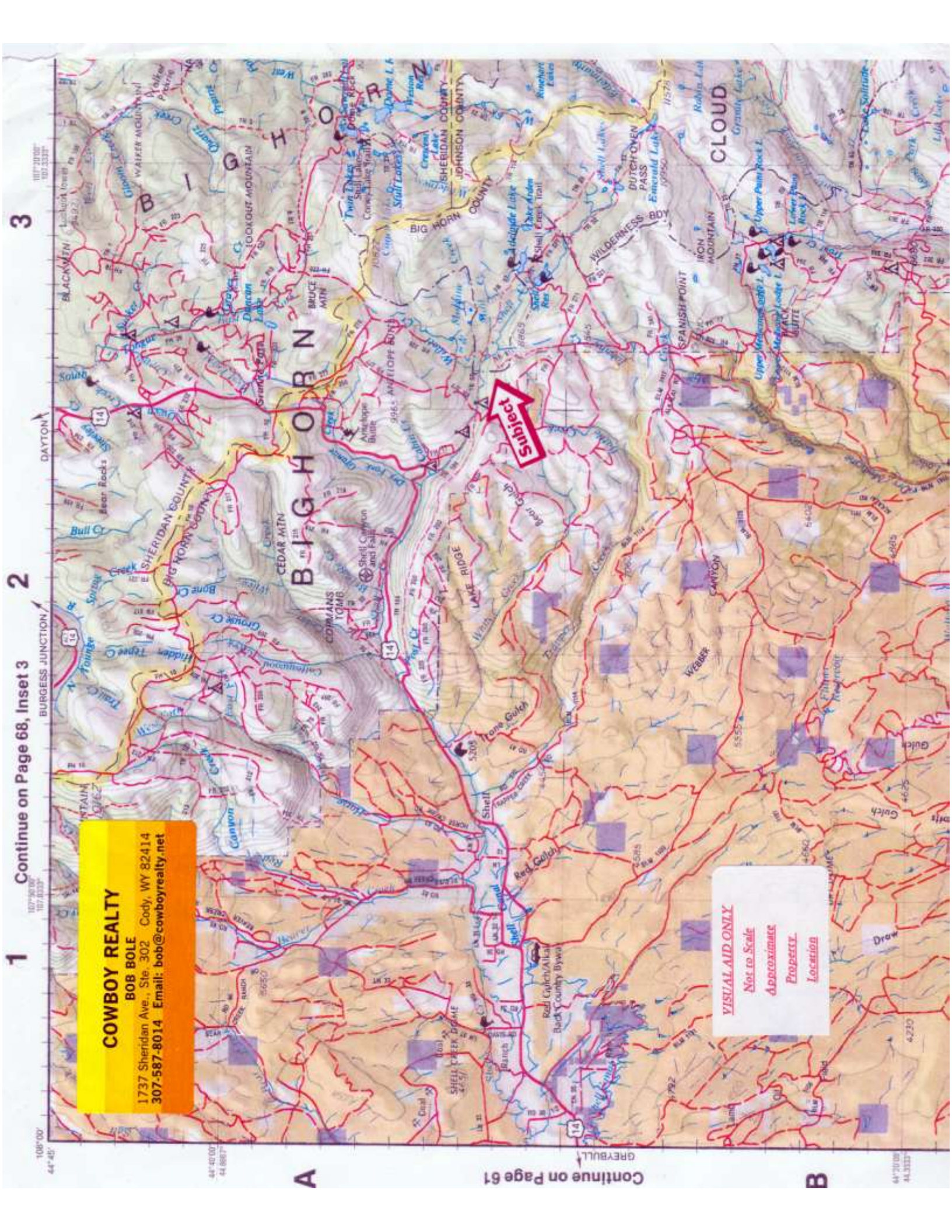
Location

Continue on Page 61

Continue on Page 68, Inset 3

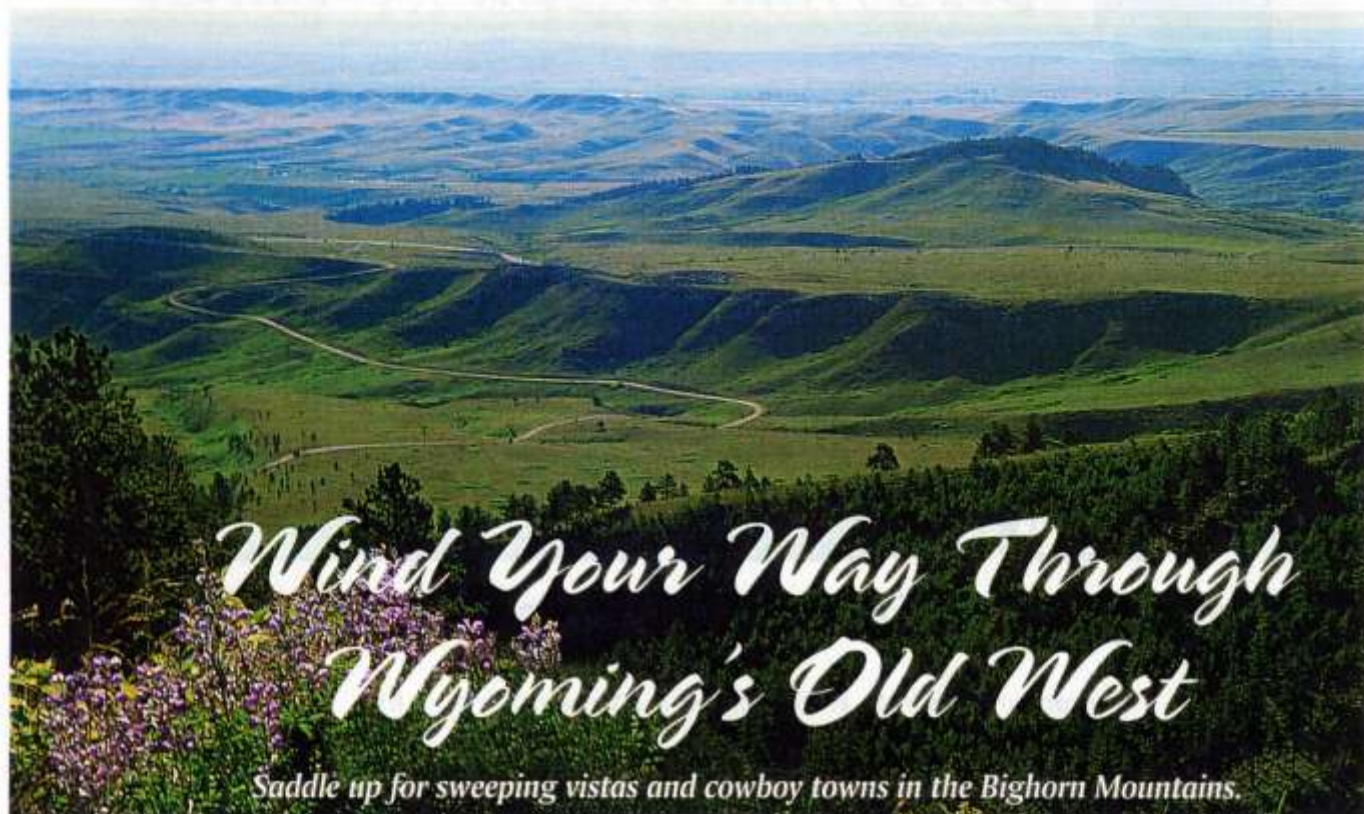
A

B





## Prettiest Drive Around



By Larry Javorsky, Field Editor  
Hamilton, Montana

FOR MOST FOLKS, Wyoming conjures up romantic images of cowboys, cattle ranches, Native Americans and rugged landscapes. And if you take a scenic drive through the Bighorn Mountains in the north-central part of the state, you'll see why!

The small town of Buffalo is a great place to start. Located in the Bighorn foothills, Buffalo is along the historic Bozeman Trail and was frequented during the late 1800s by gold miners, cattle barons, outlaws—like Butch Cassidy and the Sundance Kid—and settlers looking for a better life.

You can immerse yourself in this history at the Johnson County Jim Gatchell Memorial Museum in downtown Buffalo. It boasts over 15,000 artifacts from the area's past, including a collection of frontier wagons on the front lawn.

After a healthy dose of the Old West, it's time to head west on U.S. Highway

16 into the Bighorn Mountains. Called the Cloud Peak Scenic Byway, it certainly lives up to its name.

Via switchbacks and windy roads, the highway climbs up to an elevation of 9,666 feet at Powder River Pass. There are plenty of peaks to see along this road, and you might even drive *through* a cloud like we did.

If you don't get your fill of scenic vistas from the road, take an easy hike

to the High Park fire lookout, 7 miles west of the pass. It offers even more magnificent views.

Farther west on Highway 16, you'll find Meadowlark Lake Recreation Area, with developed campsites, picnic areas and Meadowlark Lake Lodge.

Just beyond Meadowlark Lake, Highway 16 descends into Ten Sleep Canyon. The name is a Native American reference to a creek crossing in the canyon that was a 10-day (or "sleep") journey to two major Indian camps.

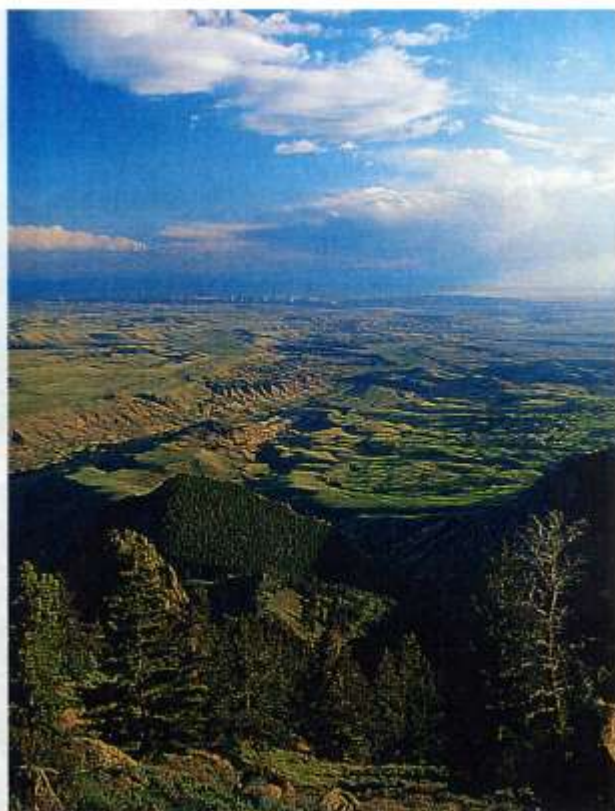
There are two rustic U.S. Forest Service campgrounds along Ten Sleep Creek, and the Ten Sleep fish hatchery was one of our kids' favorite stops.

Driving into the town of Ten Sleep, you'll feel like you're back in the Old West again. With businesses like the

**DYNAMITE DRIVES.** U.S. Highway 14A takes you through the breathtaking Bighorn Canyon (at left). Along the Bighorn Scenic Byway (U.S. Highway 14), you see fabulous panoramic views (above) from the east side of the Bighorn Mountains.







**WHAT A VIEW!** Northern Wyoming's Bighorn Valley (above) is an impressive sight from U.S. Highway 14. In Buffalo, the Johnson County Jim Gatchell Memorial Museum (at left) is named after a longtime local drugstore operator. His fascination with local history and reputation for honesty earned him the trust of local Native Americans back in the early 1900s, which helped him gather a priceless collection of Old West memorabilia. Farther west, Ten Sleep (above left) still retains its frontier-town ambience.

Mountain Man Cafe, the Ten Sleep Saloon and Dirty Sally's General Store, we felt as though we should've rode into town on horses! A stop at the Ten Sleep Pioneer Museum is a must.

From there, take Lower Nowood Road north along the Nowood River into Manderson, where you'll hook up again with Highway 16. Follow Highway 16 (also known as Highway 16/20 here) north into Greybull, which is noted for its dinosaur beds and track sites.


From Greybull, there are two ways to return to Buffalo. You can take U.S. Highway 14, known as the Bighorn Scenic Byway, on an 81-mile drive east to I-90, passing through Shell Creek Canyon along the way. Then head south on I-90 nearly 50 miles to Buffalo.

My preference is to head north for 33 miles on U.S. Highway 310 to Lovell, and then take U.S. Highway 14A east over the Bighorns to I-90, a distance of 93 miles. Called the Medicine Wheel Passage, Highway 14A rises sharply after crossing the Bighorn River. The views from this road are magnificent.

About halfway between Lovell and Burgess Junction is the Medicine Wheel National Historic Landmark. Believed to be thousands of years old, the Medicine Wheel is a circle of rocks 80 feet in diameter, with 28 spokes radiating from a central cairn, or memorial, to an outer circle. It's a 1-1/2-mile hike to the site,

which Native Americans consider sacred.

The rest of the drive back to Buffalo is packed with scenic views and fascinating geologic formations. And when your tour is complete, I'll wager that you, too, will think of cowboys, Native Americans and rugged scenery whenever you think of Wyoming!

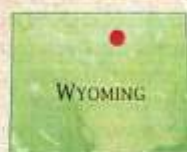
**Before You Visit...** Buffalo is at the junction of I-25, I-90 and U.S. Highway 16, about 115 miles north of Casper. For more information, call the Buffalo Chamber of Commerce at 1-800/227-5122 or visit [www.buffalowyo.com](http://www.buffalowyo.com). 

The Johnson County Jim Gatchell Memorial Museum is open from mid-April through December. Admission is \$4 for adults and \$2 for kids ages 6-12. For details, call 1-307/684-9331 or visit [www.jimgatchell.com](http://www.jimgatchell.com).

To learn more about attractions throughout the Bighorn area, visit [www.bighorns.com](http://www.bighorns.com).

**More to See...** Cody is 53 miles west of Greybull on U.S. Highway 20. It's home to the fascinating Buffalo Bill Historical Center. For details, see page 40 of the Jan/Feb 2002 issue.

The Salt Creek Museum in Midwest, about 70 miles south of Buffalo, has a wealth of information about the Salt Creek Oil Field, the world's largest light-oil field. For details, see page 29 of the Jan/Feb 2003 issue.





## Smile Rodeo a hit



COURTESY

Twenty-one children from 2- to 18-years-old participated in the Smile Rodeo recently at the Ranger Creek Guest Ranch. Each year the ranch grants the wishes of seriously ill children who wish to get a taste of cowboy life.

## Ranger Creek Guest Ranch makes wishes come true

By SALLY ANN SHURMUR  
Star Tribune staff writer

Eight Make-A-Wish families from throughout Wyoming enjoyed a three-day weekend recently at the Ranger Creek Guest Ranch near Shell for the 5th annual Smile Rodeo.

Each of the families has a child with a life-threatening illness who was granted a wish by the Make-A-Wish Foundation of Wyoming.

There were 21 children from 2 to 18 years old, including siblings, and their parents who enjoyed a trail ride, fun and games on horseback and a campfire, complete with fiddle playing and cowboy poetry.

Some kids even enjoyed a slumber party in the ranch lodge with staff, giving parents the privacy of their own cabin.

Rodeo wish families included Lacy's family from Casper, Theresa's family from Worland, Greg's family from Torrington, Nicolina's family from Glendo,



COURTESY

Children get a wide range of instruction at the Smile Rodeo including cattle-roping and horse-riding.

Brenden's family from Worland, Nicole's family from Alton, Clayton's family from Casper and Courtland's family from Riverton.

"The kids liked being able to ride a horse," said Clayton's father, Jack Loraas. "He (Clayton) thought that was fun. He had

been on a horse when he was about 2, but he didn't remember it."

Clayton, 6, had a stem cell transplant for AML leukemia on July 12, 2002, and is "doing real well," according to his dad.

His mother and father and sister, 8, accompanied him to the

Ranger Creek Ranch.

"It was kind of nice being able to go along," Loraas said of the family weekend.

The Smile Rodeo was started by the Wild Bill and Sue Comisford family, owners of Ranger Creek Guest Ranch, as a way to give back what was given to them during their own son's illness several years ago.

Make-A-Wish children and their families are invited to take part in the weekend free of charge. The weekend was created in hopes of giving the families a carefree time away from the worries that often accompany a sick child, the Comisfords said.

Since an illness affects the whole family, not only the sick child, steps are taken during the weekend to insure that everyone is involved and enjoying themselves. Each of the kids is matched up with his or her own wrangler for the day, who takes care that the child feels comfortable on a horse during all of the events.

Rodeo volunteers included Wild Bill, Sue and Melissa Comisford; Billy and Nicole Tarleton,

Katie Bohlmann, Tanja Heck and John and Ann Schroeder, all wranglers from the Ranger Creek Guest Ranch; Tom Sharpe, wrangler and cowboy poet from Grand Junction, Colo.; Loren Good, wrangler from Shell; Jeff Grant, wrangler from Atlanta, Ga.; Mike and Caroline Diehl, wranglers from the Hideout Ranch in Shell; Sylvia Landon of the Hideout Ranch in Shell; Dale, JoAnn and Reese Hill, wranglers from Basin; Bruce Keller, wrangler from the Shell Creek Ranch in Shell and Al and Mary Kalbfleisch of Casper.

Contributors to the event included Warehouse Market of Sheridan, food supplies; Snowshoe Lodge of Shell, additional housing; Lou Taubert Ranch Outfitters of Casper, cowboy hats; Bob and Alisa Martin family of Casper, Pepsi products and Make-A-Wish Foundation of Wyoming, which identified the families.

For more information on the Smile Rodeo or the Make-A-Wish Foundation, call 234-9474 in Casper or toll-free 888-996-9474.

### - The Big Horn National Forest-

...has an incredible diversity of recreational opportunities for everyone – young and old, very active or more sightseeing-oriented, in all four seasons. In the summer, the wildflowers, abundance of wildlife, scenic vistas and snow-capped mountains are an incredible combination. Day hikers and backpackers will find an abundance of trails that vary from moderate to very strenuous and can be tailored for the perfect trip. If you'd rather be transported to a gorgeous location, there are many trails for horseback use, especially handy for the Cloud Peak Wilderness Area, a completely non-motorized area. ATV and motorcycle use is available on trails authorized for motorized vehicle use. A Bighorn National Forest map is handy to check which trails are specified as motorized as well as outlining other regulations. There are incredible fishing opportunities in the Bighorn National Forest, from high country lakes to fast-running streams. Several species of trout are found in abundance and there are several Forest locations that welcome boats. There are more than 60 developed areas in the Forest for camping including family campgrounds, picnic areas and rental cabins. Fall is prime hunting season for big game like elk, moose, deer, Bighorn sheep and mountain goats as well as upland game birds. Winter also presents an array of recreational choices. With some of the best dry powder snow in the country, the Bighorn National Forest is a destination for snowmobilers, cross-country and downhill skiers. Trails crisscross the Forest for snowmobiles and cross-country skiers, many groomed for use. A truly spectacular playground for all, the Bighorn National Forest is an incredible asset to Northeastern Wyoming.

### - BIG HORN COUNTY –

The sky's the limit in beautiful Big Horn County. Recreation plays an important role in the lives of Big Horn County residents and visitors. Situated between the towering Bighorns to the east and the scenic Pryor Mountains to the north, this area offers limitless opportunities for outdoor recreationists. Big Horn County, en route to Yellowstone to the west or the Black Hills to the east, boasts a number of historical and archaeological sites.

Situated in the northern portion of Big Horn County is the magnificent Bighorn Canyon National Recreational Area. Covering over 120,000 acres, the recreation area offers an abundance of activities for people of all ages, including boating, fishing, camping and swimming. The towering canyon walls offer an opportunity to capture spectacular scenery on film or to explore the hidden nooks and crannies in the canyon. The Yellowtail Wildlife Habitat, occupying 10,000 acres of public hunting land, provides a designated feeding area for Wyoming game birds and waterfowl, and also creates an exceptional recreational facility for outdoor sportsmen. The facility, managed by the Wyoming Game and Fish Department, accommodates primarily upland game birds and waterfowl.

Unique to Big Horn County is the first national wild horse refuge. The Pryor Mountain Wild Horse Range, stretching over 40,000 acres, provides a peek at the untamed, natural beauty of the wild mustang, once free-roaming in this territory. The area, administered by the Bureau of Land Management, is home to almost 200 wild horses and is accessible by four-wheel drive vehicles only. History enthusiasts will enjoy visiting the local historic ranches: the M-L Ranch, the original settlement of Lovell, and the Lockhart Ranch, home of the famous pioneer newspaperwoman, Caroline Lockhart.

The archaeology associated with Big Horn County is known throughout the world. The mystifying Medicine Wheel, origin unknown, is located high in the Bighorn Mountains. Bad Pass Trail, marked by stone cairns, was once used by primitive Indians as a path to reach the great buffalo hunting grounds. It reaches into both northern Wyoming and southern Montana, near Lovell.

Big Horn County is home to three breathtaking waterfalls: Bucking Mule Falls, Porcupine Falls and Shell Falls. Shell Falls and its interpretive center are located right on U.S. Highway 14.



## **Thank You...**

...for the opportunity to present this property to you. We hope you found the information complete and the property of interest.

However, if this property doesn't meet your needs, please let us know. We will do our best to find one which satisfies your requirements.

Also, if you feel you have no interest in this property, please pass this package along to a friend or associate who might have an interest, or return it to:

### **Cowboy Realty**

**1737 Sheridan Ave., Suite 302/ Cody, Wyoming 82414**

The seller is making known to all potential purchasers that there may be variations between the deeded property lines and the location for the existing fence boundary lines on the subject property. Seller makes no warranties with regard to location of the fence lines in relationship to the deeded property lines, nor does the seller make any warranties or representations with regard to specific acreage within the fenced property lines. Seller is selling the property in "as is" condition which includes the location of the fences as they exist.

Visit our web site at: [www.CowboyRealty.net](http://www.CowboyRealty.net)

NOTE: Information on this property was obtained from sources deemed to be reliable, but is not guaranteed by either Cowboy Realty, Bob Bole or the Seller. This offering is subject to correction, withdrawal, prior sale or price change without notice.

**THIS PROPERTY IS LISTED EXCLUSIVELY WITH BOB BOLE.  
COWBOY REALTY/ CODY, WYOMING 82414**

## **NOTES**

---

---

---

---

---

---

---

---

---

---

---

---



**Bob Bole—Cowboy Realty**

**[Bob@ CowboyRealty.net](mailto:Bob@CowboyRealty.net) (307) 587-8014**