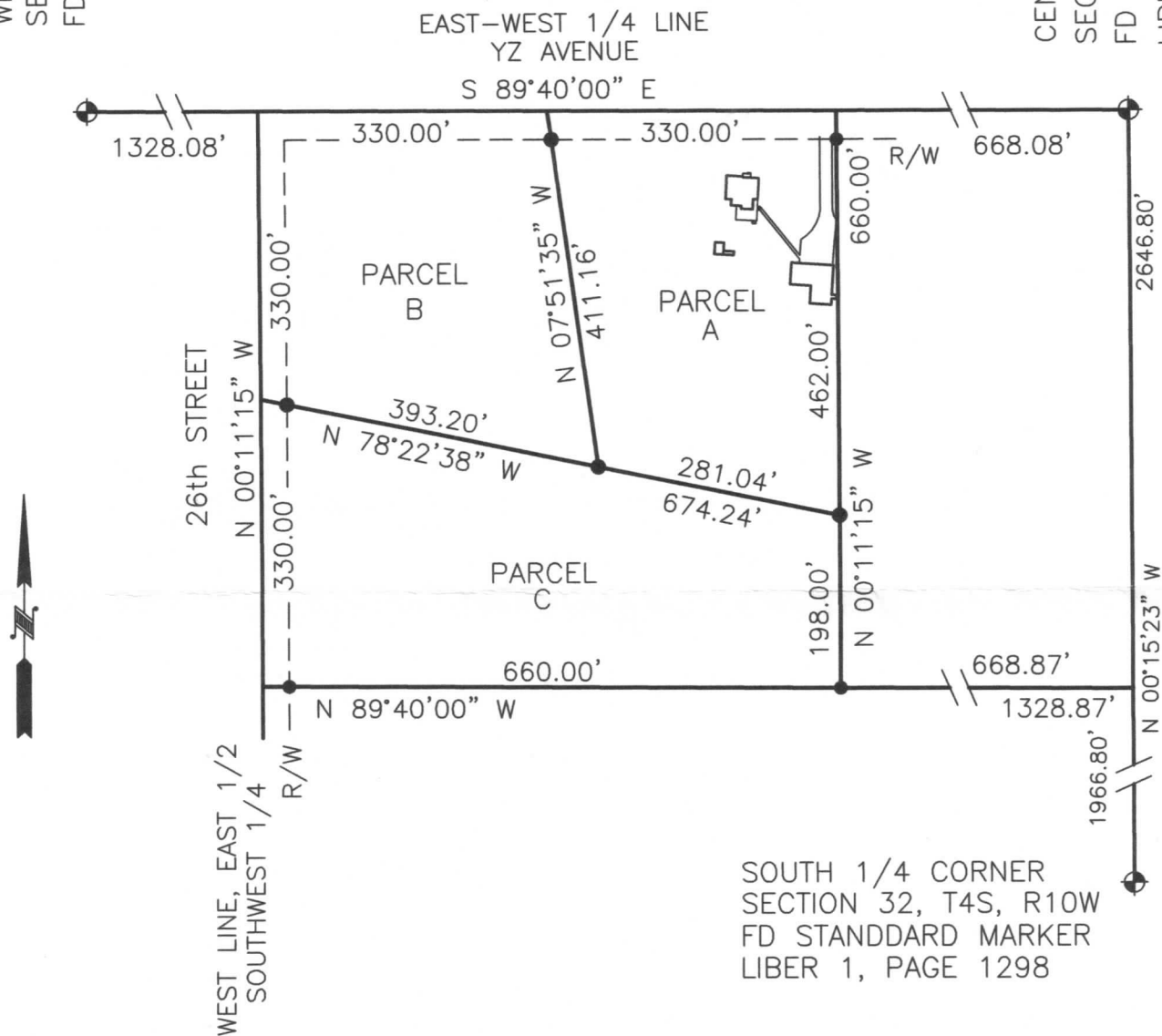


SURVEY CERTIFICATE

WEST 1/4 CORNER
SECTION 32, T4S, R10W
FD STANDARD MARKER

CENTER 1/4 CORNER
SECTION 32, T4S, R10W
FD STANDARD MARKER
LIBER 1, PAGE 1195



I HEREBY CERTIFY THAT I HAVE SURVEYED AND MAPPED THE ABOVE PLATTED AND/OR DESCRIBED ON THIS DATE, AND THAT THE RATIO OF CLOSURE IN THE UNADJUSTED FIELD OBSERVATIONS WAS 1-10000 FEET ±, AND THAT ALL REQUIREMENTS OF SECTION 3 OF P.A. 132, 1970 HAVE BEEN COMPLIED WITH.

BY: Mark S. Evans PS
MARK S. EVANS, PS MI# 45497

DATE: 2-16-10

LEGEND:

- - SET 1/2" IRONS R - "RECORDED AS"
● - CORNER FOUND Δ - LATHE

SECTION 32, T-4-S, R-10-W

SHEET 1 OF 2

BRADY TWP, KALAMAZOO CO.

CERTIFIED TO: JEFF BECKER

BEARING SOURCE: PREVIOUS

JOB NO.: 10-012 DATE: 2-16-10

SCALE: 1" = 200'

0' 100' 200' 300'



EVANS LAND SURVEYING

GOBLES, MICH. 49055
(269) 377-2904 FAX: (269) 628-4964