

Land In Bloomington Indiana



FACTS:

98.5 acres on Zikes Rd.

Willing to subdivide

Adjacent to high end residential homes \$500k+

Beautiful views

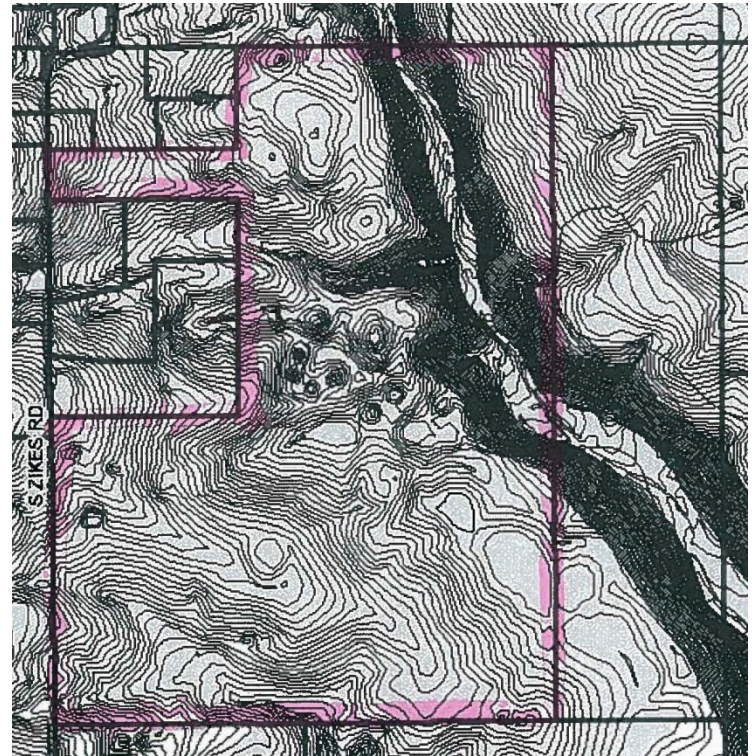
Located between Bloomington & Lake Monroe

Easy access to Hwy 37 (to Indy)

No sewer

Zoned Agricultural

Motivated Seller



Price: All serious offers welcome