



GREAT SOUTHERN *Land*



26 UPPER NEW RIVER (RMK 7979)

Offered for \$479,900 (\$1,696/acre)

Winston County

283+/- total acres

Located 2 miles southwest of Natural Bridge

Access is off of CR 9 where you enter SE corner

New river flows through the west side of this tract

A nice creek forms on this tract and flows to river

Great views from the ridgetops

74 acres of natural timber along creek and river

Planted pines: 16 acres 1988 & 193 acres 2007



Great
Southern
Land

For A List Of All The RMK Timberland Group Tracts
Offered By Great Southern Land Visit:

www.GreatSouthernLand.com

GREAT SOUTHERN LAND, LLC

4027 U.S. Highway 231

Wetumpka, AL 36093

(800) 782-LAND (5263) - (334) 567-0924 Office—(334) 567-8024 Fax

Eddie Stone, RF, Listing Agent

205-702-4420 office

205-837-4466 cell

edstone@windstream.net

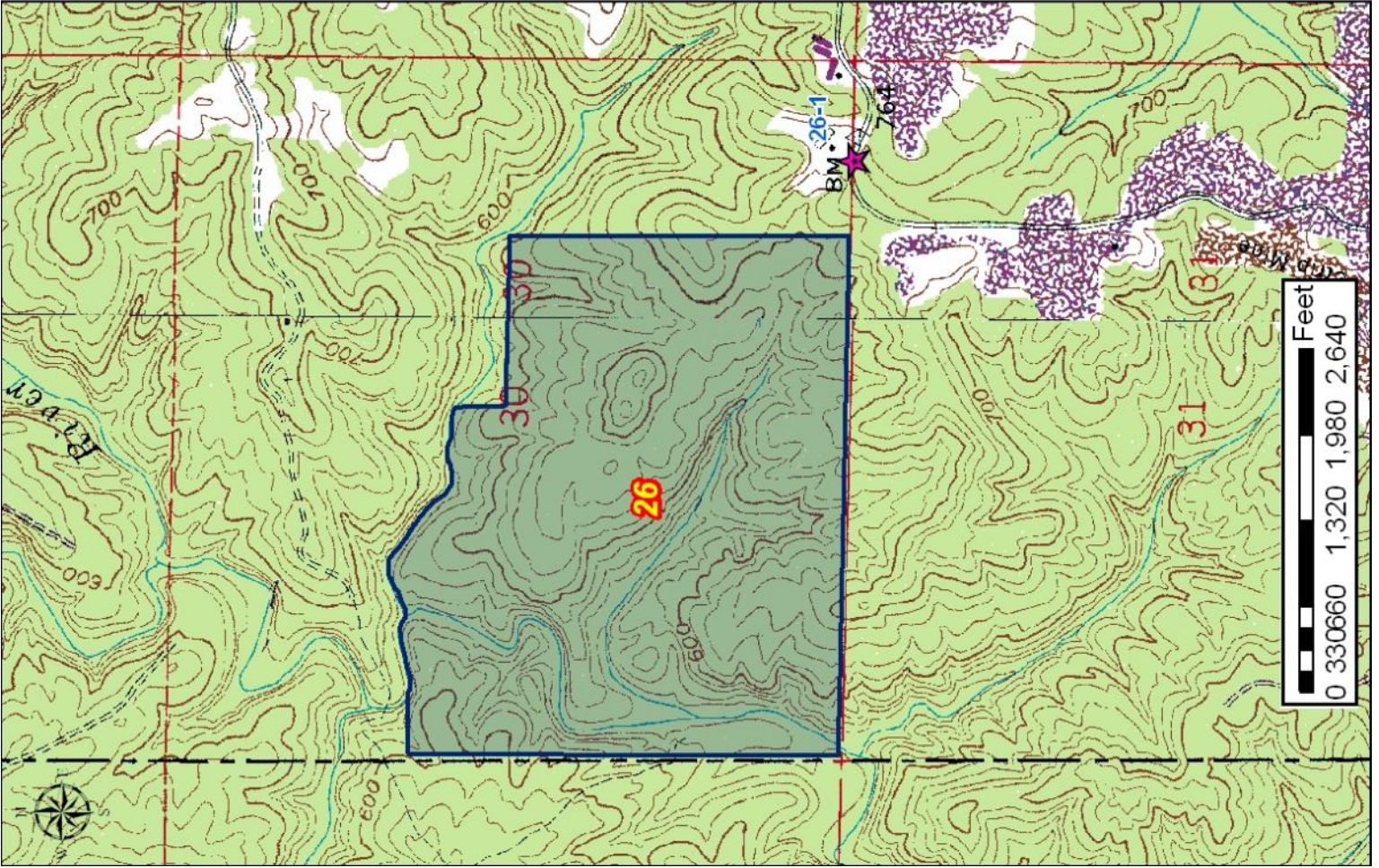
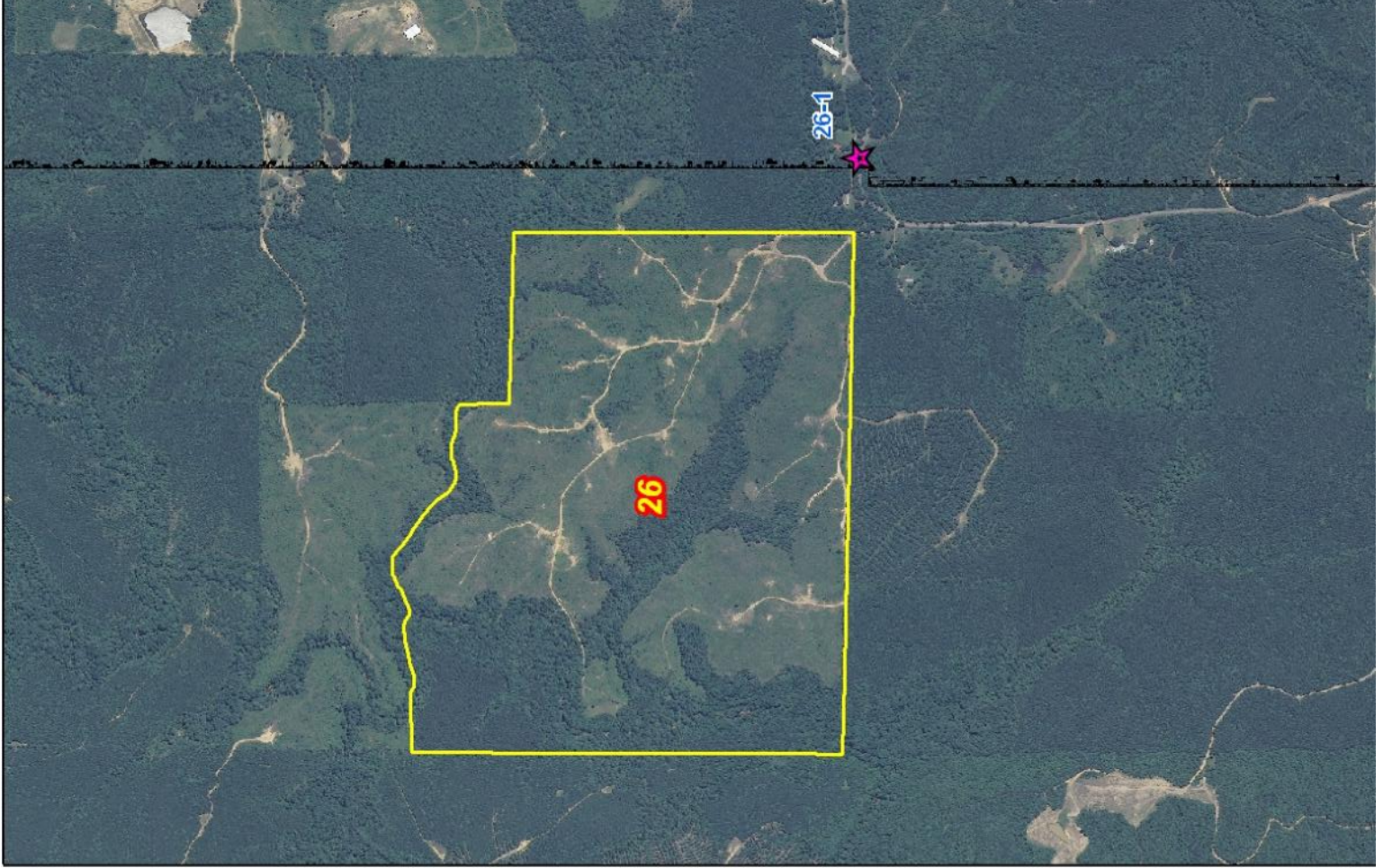
Fletcher Majors, ALC, Broker

334-567-0924 ext. 205

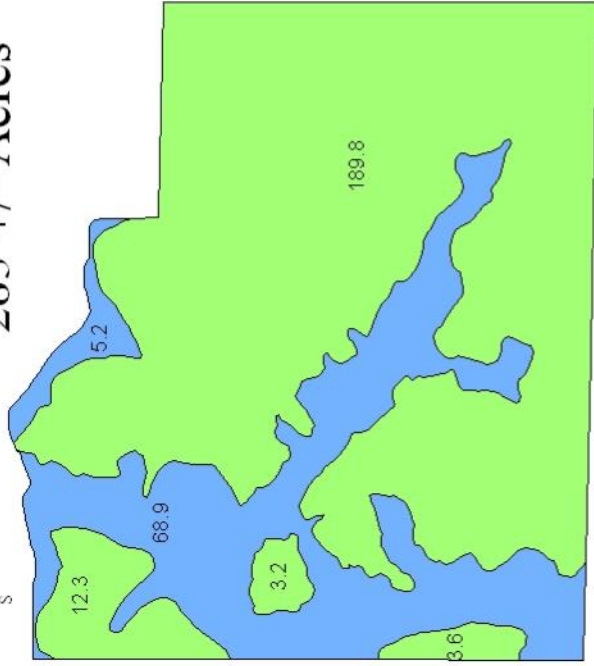
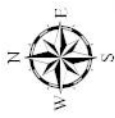
334-328-9278 cell

Fletcher@GreatSouthernLand.com



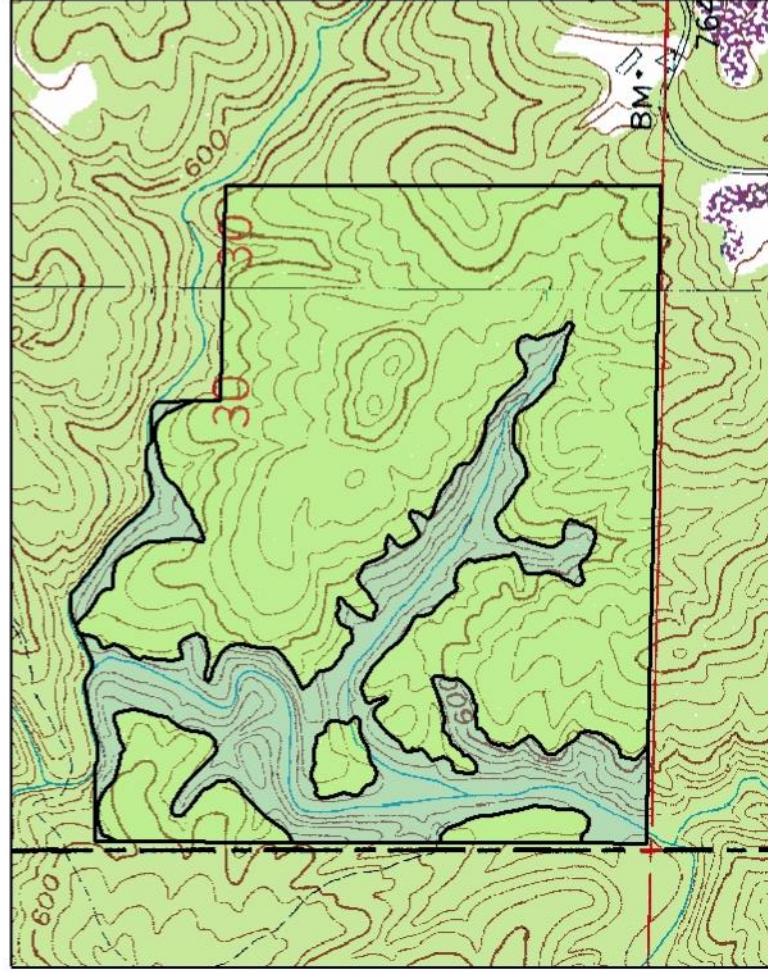


26 - Upper New River 283 +/- Acres



Stand Use With Acres

2009_Stand Type	
Cutover	Red
Natural Sloping	Light Blue
Natural Upland	Dark Blue
Non Timbered	Grey
Planted Upland	Green
Site Prepared	Yellow



2009 Aerial With Estimated Establishment Year

