

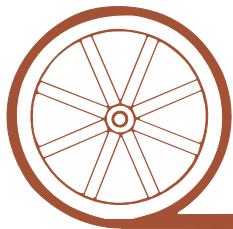
# LAND FOR SALE

## Garden County Pasture



- Location:** 9 miles northeast of Oshkosh, NE on County Road 189.
- Legal Description:** NE1/4 Section 3-T17N-R43W and SE1/4 Section 34-T18N-R43W of the 6th P.M., Garden County, NE.
- Acres:** 319.15 tax assessed acres
- Taxes:** 2009 taxes due in 2010 - \$1,087.50
- Water:** There is an electric submersible pump with an 8' stock tank in the middle of the property.
- Price:** \$115,000.00 Cash
- Comments:** This is a good piece of pasture with excellent access on county gravel road. Read to stock for summer grazing.
- Contact:** **Mike Polk, Listing Agent: 308-534-9240, email: [mike@agriaffiliates.com](mailto:mike@agriaffiliates.com)**  
Loren Johnson, Bruce Dodson, Jerry Weaver, Duane McClain, Dallas Dodson, Jerry Sloan or Roger Luehrs

*Offered Exclusively By:*



## AGRI AFFILIATES, INC.

*...Providing Farm - Ranch Real Estate Services...*

**NORTH PLATTE OFFICE**

P.O. Box 1166

I-80 & US Hwy 83

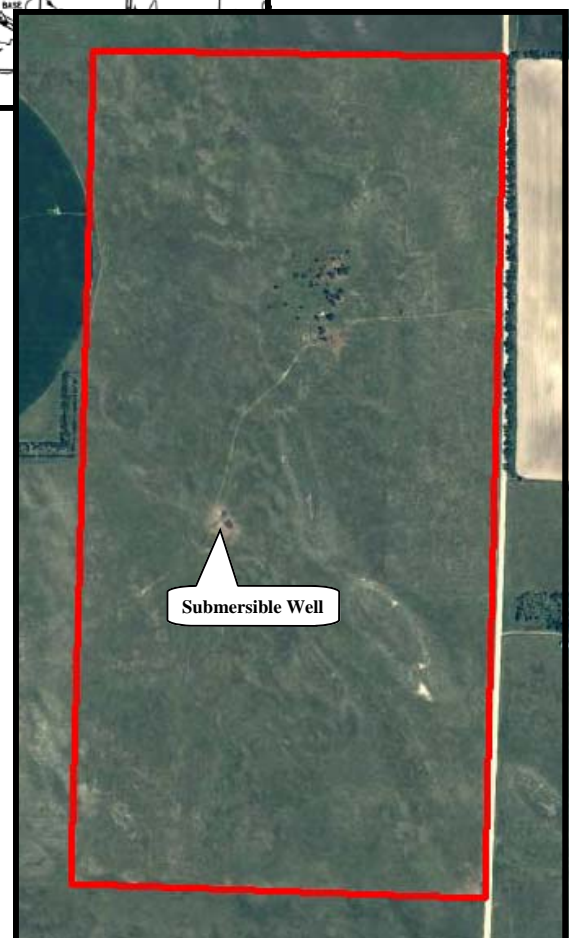
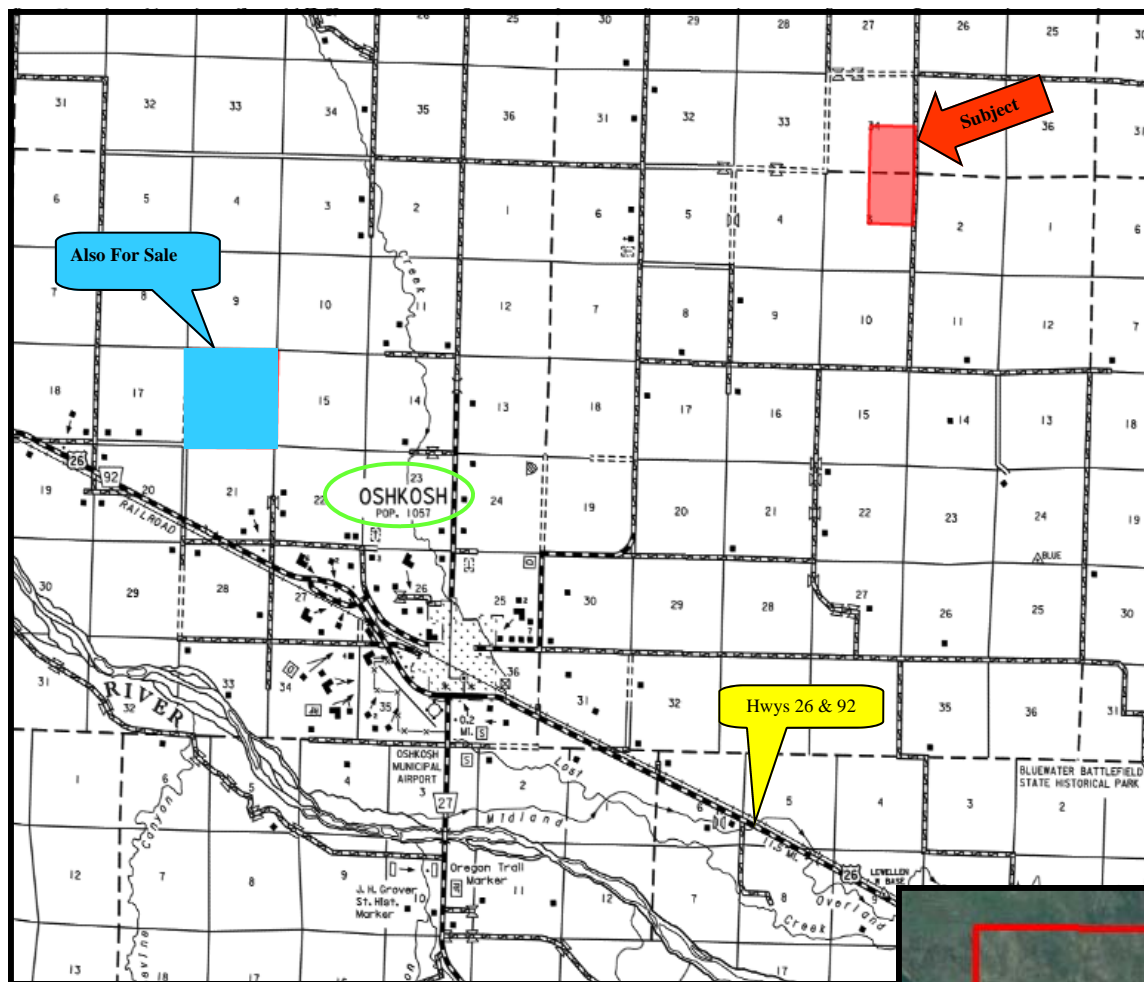
North Platte, NE 69103

[www.agriaffiliates.com](http://www.agriaffiliates.com)

**(308) 534-9240**

Telecopier (308) 534-9244

Information contained herein was obtained from sources deemed reliable. We have no reason to doubt the accuracy, but we do not guarantee it. Prospective Buyers should verify all information, including items of income and expense. All maps provided by Agri Affiliates, Inc. are approximations only, to be used as a general guideline, and not intended as survey accurate.



All maps provided by Agri Affiliates, Inc. are approximations only, to be used as a general guideline, and not intended as survey accurate.