



# GREAT SOUTHERN Land



## 11 PISGAH CEMETERY (RMK 8022)

Offered for \$149,900 (\$1,545/acre)

Winston County

97+- total acres

Joins USFS Bankhead National Forest

Located just north of Pisgah Cemetery off CR 63

Creek runs through the property

Good hunting/timberland investment tract

Less than 7 miles from Lakeshore Marina

27 acres of natural timber

Planted pines: 18 acres 1983 & 51 acres 2005



Great  
Southern  
Land

For A List Of All The RMK Timberland Group Tracts  
Offered By Great Southern Land Visit:

[www.GreatSouthernLand.com](http://www.GreatSouthernLand.com)

**GREAT SOUTHERN LAND, LLC**

4027 U.S. Highway 231

Wetumpka, AL 36093

(800) 782-LAND (5263) - (334) 567-0924 Office—(334) 567-8024 Fax

**Eddie Stone, RF, Listing Agent**

205-702-4420 office

205-837-4466 cell

[edstone@windstream.net](mailto:edstone@windstream.net)

**Fletcher Majors, ALC, Broker**

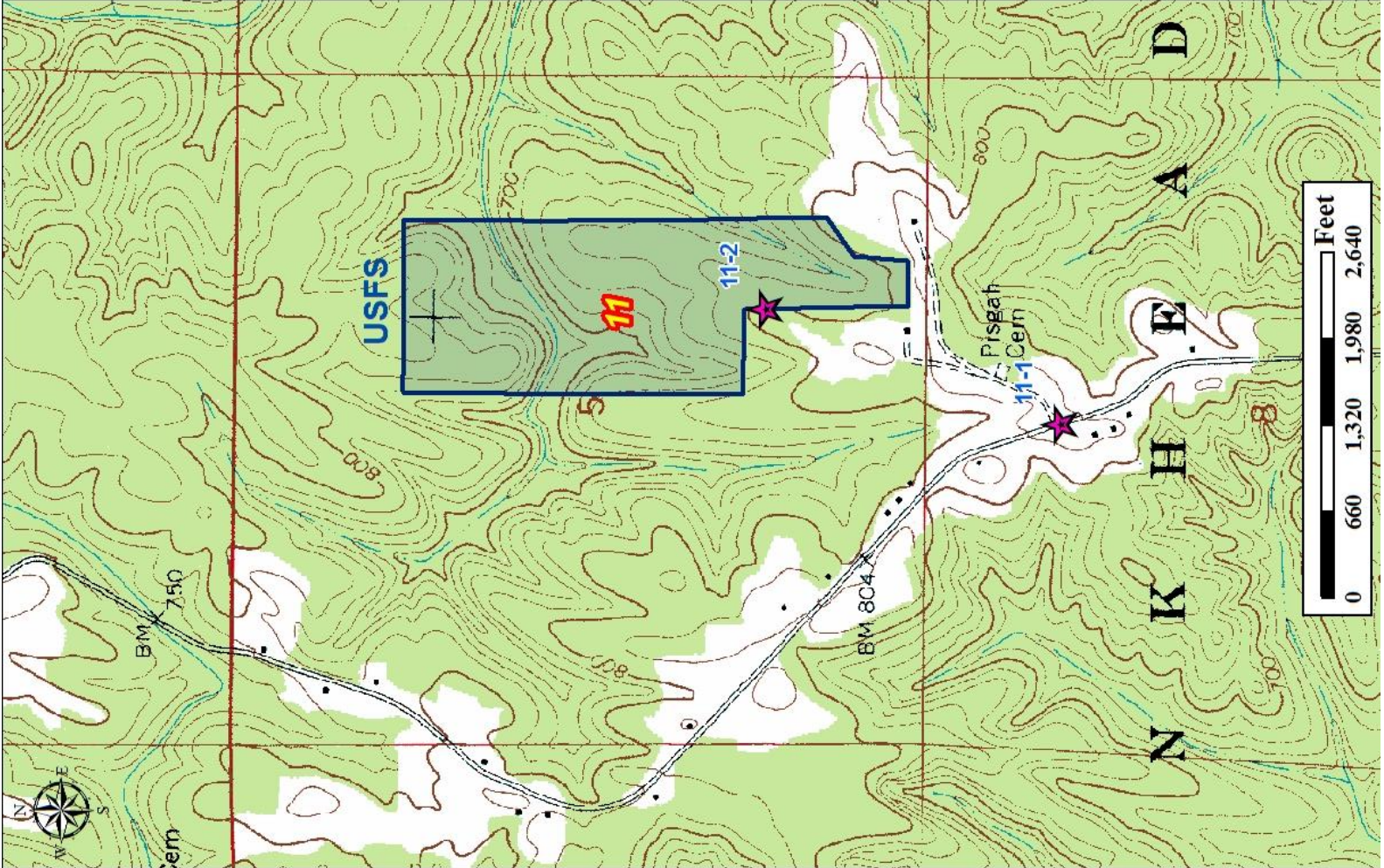
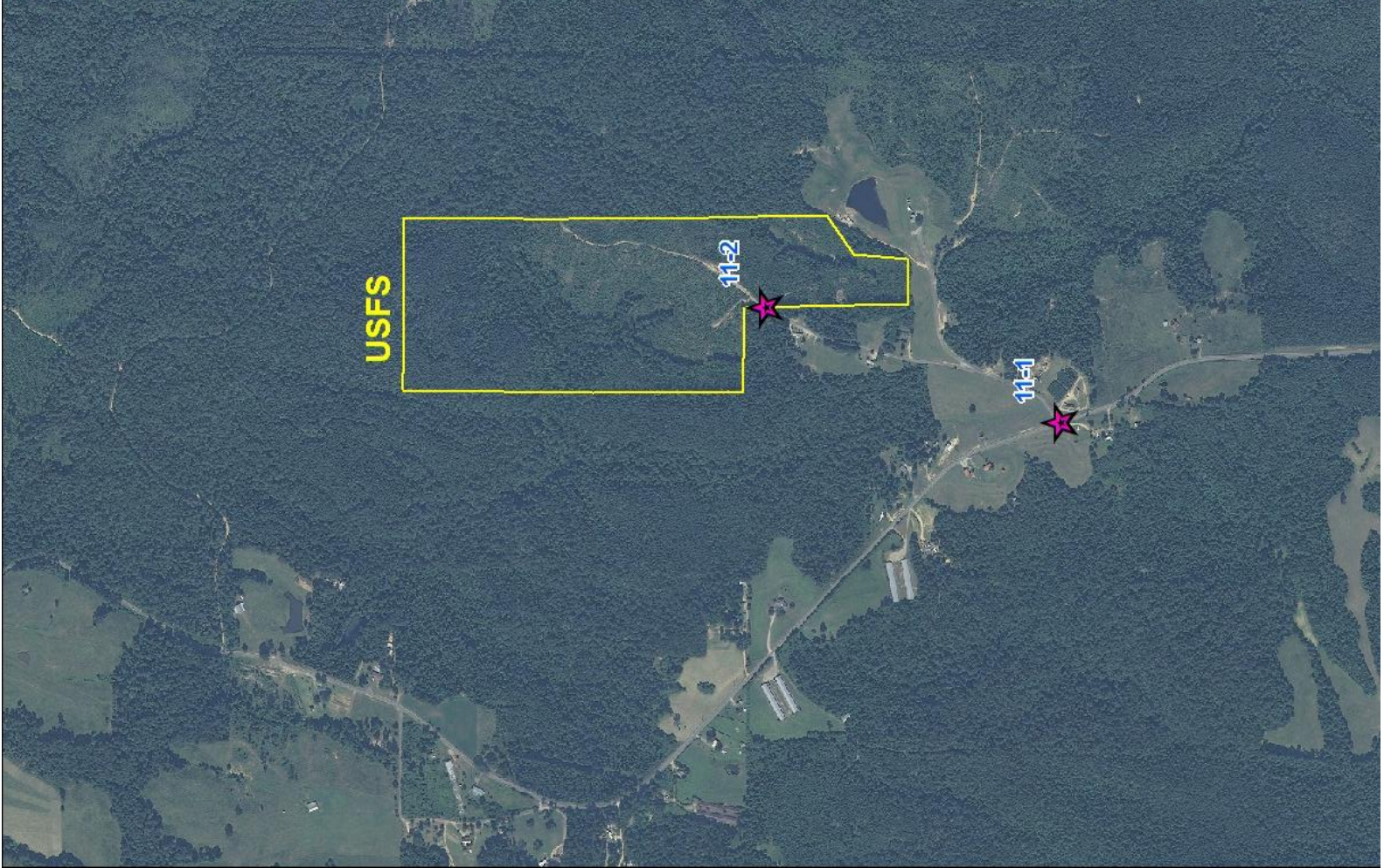
334-567-0924 ext. 205

334-328-9278 cell

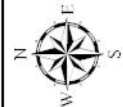
[Fletcher@GreatSouthernLand.com](mailto:Fletcher@GreatSouthernLand.com)











# 11 - Pisgah Cemetery 97 +/- Acres

## Stand Use With Acres

2009_Stand Type	Natural Upland	Non Timbered	Planted Upland	Site Prepared
	Cutover	Natural Sloping		

