



*Protecting Clients. Conserving the Land.*

## **Kennedy Ranch**

*3,966 Acres, Near Marfa, Presidio County, Texas*



### **James King, Agent**

Office 432 426.2024

Cell 432 386.2821

[James@KingLandWater.com](mailto:James@KingLandWater.com)

King Land & Water LLC  
P.O. Box 109, 109 State Street, Suite 1, Fort Davis, TX 79734  
office 432.426.2024 fax 432.224.1110 [kinglandwater.com](http://kinglandwater.com)

## Kennedy Ranch

*3,966 Acres*

*Casa Piedra Road*

*Marfa, Presidio County, Texas*

**James King, Agent**

Office 432 426.2024

James@KingLandWater.com

---

### Location

The Kennedy Ranch is located 25 minutes south of Marfa, Texas off of paved Casa Piedra Road (FM169) just past the bridge over live water Alamito Creek. Ranch lies east of the Atchison and Topeka and Santa Fe Railroad or the South Orient Railroad. The pavement on Casa Piedra Road ends just past the entrance to the Kennedy Ranch where it goes for another 40 miles to the north entrance to Big Bend Ranch State Park and to the river road east of Presidio accessing hundreds of thousands of acres of public lands and the Rio Grande River.

### Acreage

3,966 acres in Presidio County.

### Description

The Kennedy Ranch is located in the Chihuahuan Desert of Texas comprising of mid-elevation grasslands and brush of basin range topography, between the Davis Mountains to the north and the Chinati Mountains to the west and the Rio Grande River on the south. The ranch is located adjacent to large properties in the Alamito Creek drainage and is part of the original Kennedy Ranch that has been in the same family until recently for over the past 60 years. This ranch is also next to Plata, a historic abandoned farming community that provided produce, cotton and corn for the large silver operations at Shafer during the turn of the 19<sup>th</sup> Century. The 1,000 ac Alamito Creek Preserve owned and operating by the Trans Pecos Water and Land Trust is just next door providing opportunities for birding and hiking along its 2 ½ miles of Cottonwood lined Alamito Creek and its live waters during open weekends.

The original Kennedy Headquarters is located in the heart of the ranch providing spectacular views of area mountains including the Chinati, Cienega, and Davis Mountains as well as the Sierra Ricas into Mexico. The Kennedy consists of high hills, steep canyons, and desert floors to combine into a mix of habitats that provides year round recreation and hunting. Just 30 minutes to downtown Marfa the ranch is remote but yet accessible to the areas wide amenities.

## Habitat

The landscape is wide-open rolling grass and brush surrounded by rugged mountain ranges which can be seen from most places on the property. Classic “Cattle County” of the Old West, the Kennedy Ranch has maintained much of the environment and appearance of times past. This vast area lies in a narrow elevation range between 3,750 and 4,200 feet allowing for mix of vegetation from the mid to lower Chihuahuan Desert such as Spanish dagger, yucca, creosote and cholla with a mix of blue grama, black grama, bear grass, and sideoats grama with scattered brush. Tributaries to Alamito Creek have heavier brush like mesquite, desert willow, white brush, catclaw and some oaks and juniper.

## Wildlife

This property is home to many species of birds, raptors, songbirds, and game birds such as Blue (Scaled) Quail, Morning dove and White-Winged dove as well as larger wildlife of the desert such as Desert Mule deer and Javalina. The brush and grasses provide excellent habitat for these game and non-game animals. This is Chihuahuan Desert hunting land at its best and a nature lover’s dream.

## Improvements

The Headquarters is located a mile off the paved Casa Piedra Road on a improved ranch caliche road and sits looking straight at San Jacinto Peak, a stunning western backdrop to this wide open big sky south Presidio country. There is an adobe and brick home with lots of character in need of repair but with lots of potential. It also has a mural painted along the porch depicting the rich Spanish and ranching heritage of the area. Great set of pens and loading shoot with two excellent metal barns with electricity and concrete floors. Grounds at one time around the home were well landscaped. It’s a working ranch complex that would make for a rustic yet functioning headquarters. Other improvements include three submersible wells with electricity, two windmills, extensive road network, fair fencing, and several earthen dams for summer water.

## Water

The Alamito Creek watershed has some of the most prolific groundwater systems in the area. There are five wells and all the wells are less than 250 feet.

## Price

\$1,927,476. or \$486 per acre for 3,966 acres.

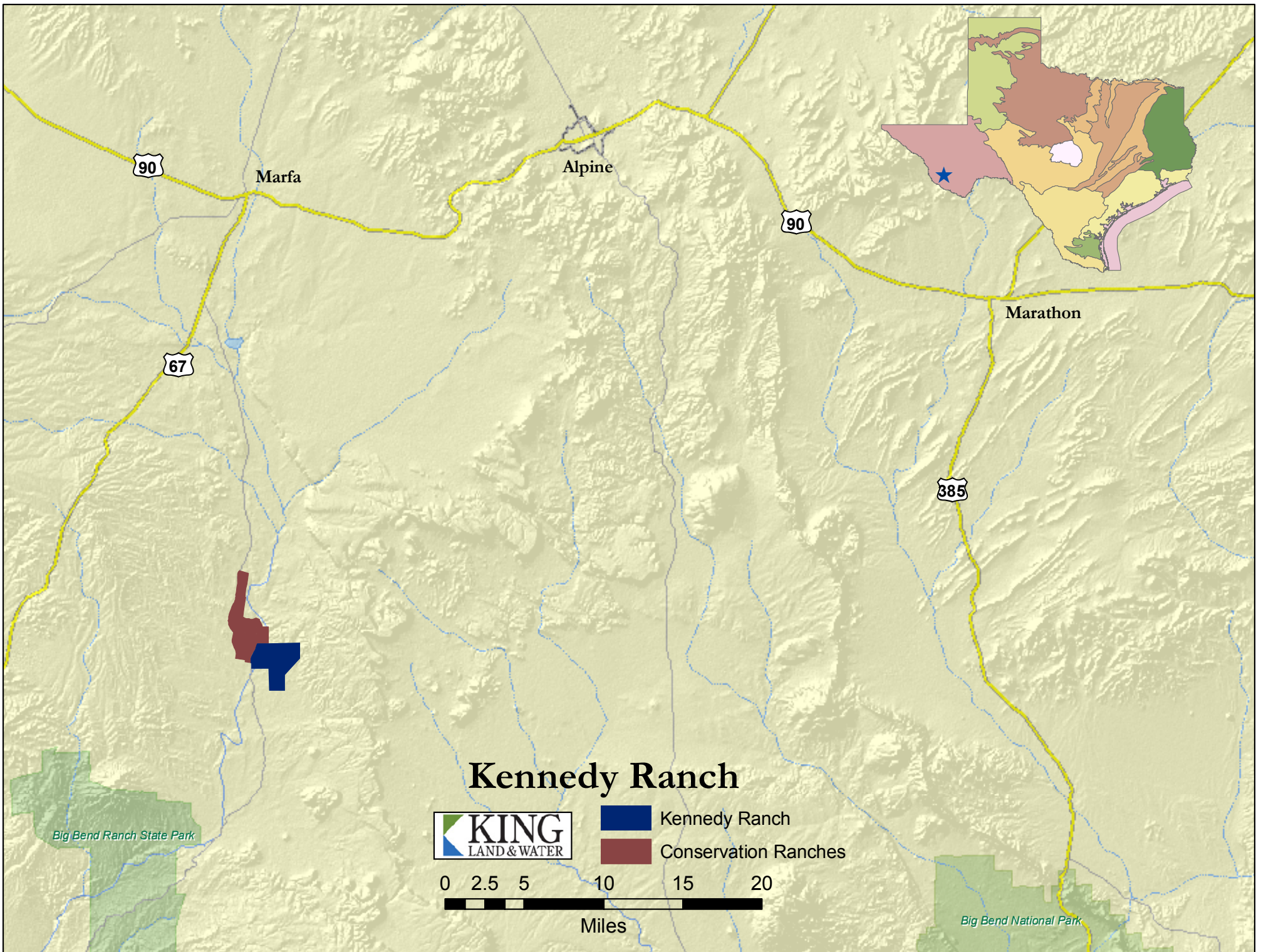
## Contact

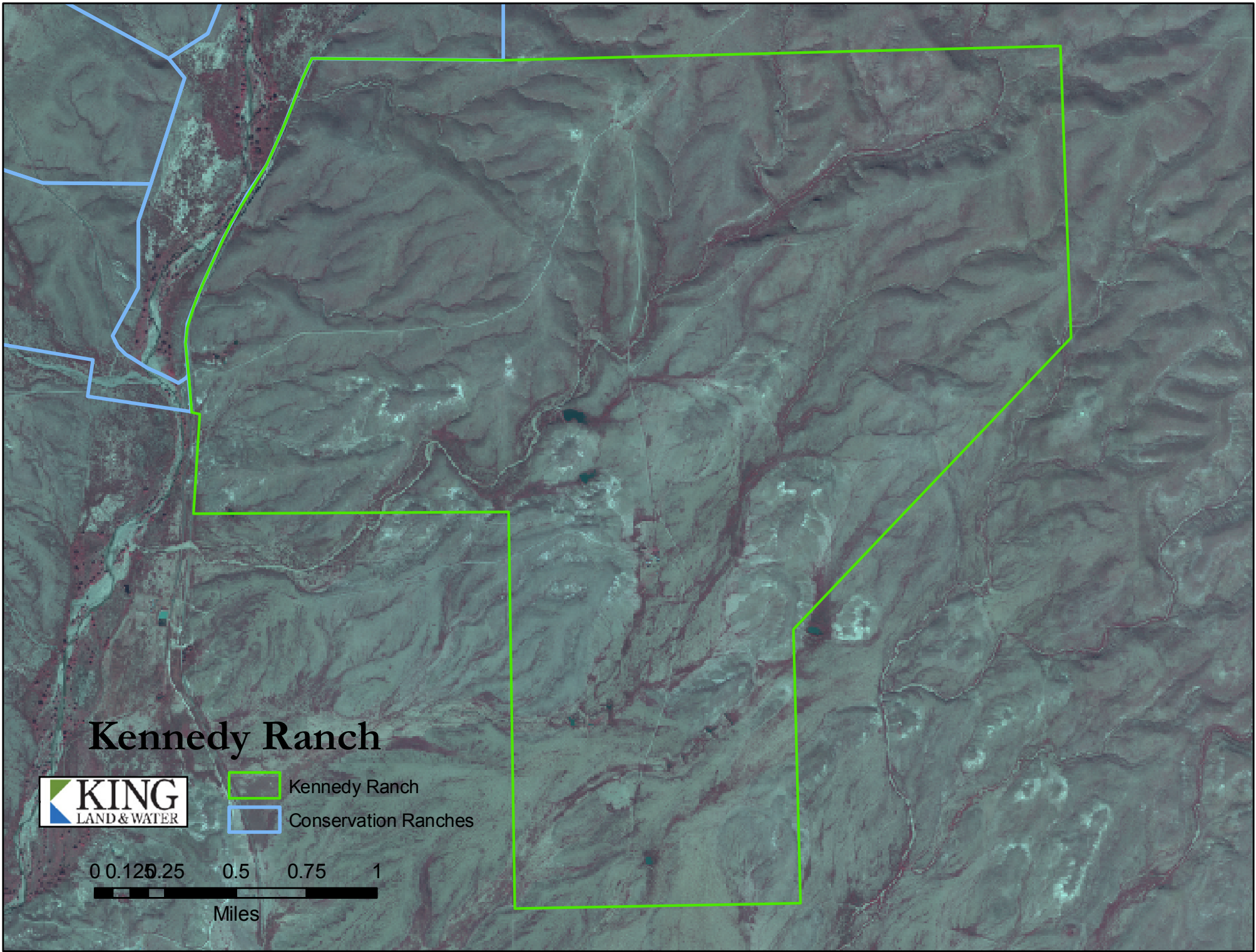
**James King, Agent**  
King Land & Water, LLC  
432 426.2024 Office  
432 386.2821 Cell  
[James@KingLandWater.com](mailto:James@KingLandWater.com)

## Disclaimer

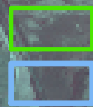
This Ranch offering is subject to prior sale, change in price, or removal from the market without notice. While the information above was provided by sources deemed reliable, it is in no way guaranteed by the broker or agent.





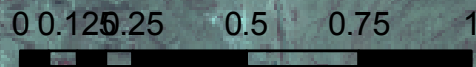


# Kennedy Ranch



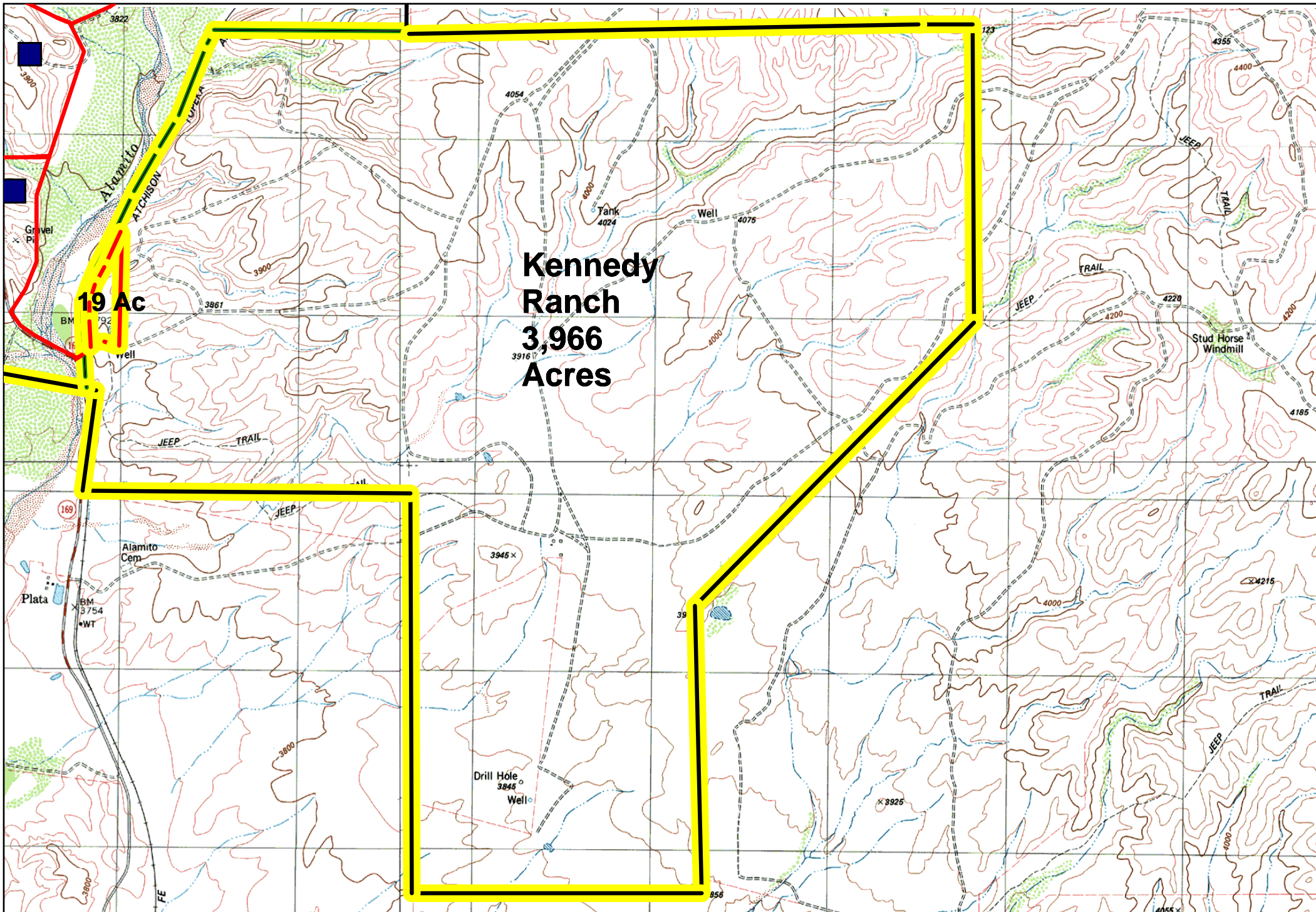
Kennedy Ranch

Conservation Ranches



Miles





Name: PLATA NE  
Date: 3/4/2010  
Scale: 1 inch equals 2222 feet

Location: 029° 52' 30.76" N 103° 59' 05.10" W NAD27  
Caption: Kennedy Ranch  
3,966 Acres  
King Land and Water



