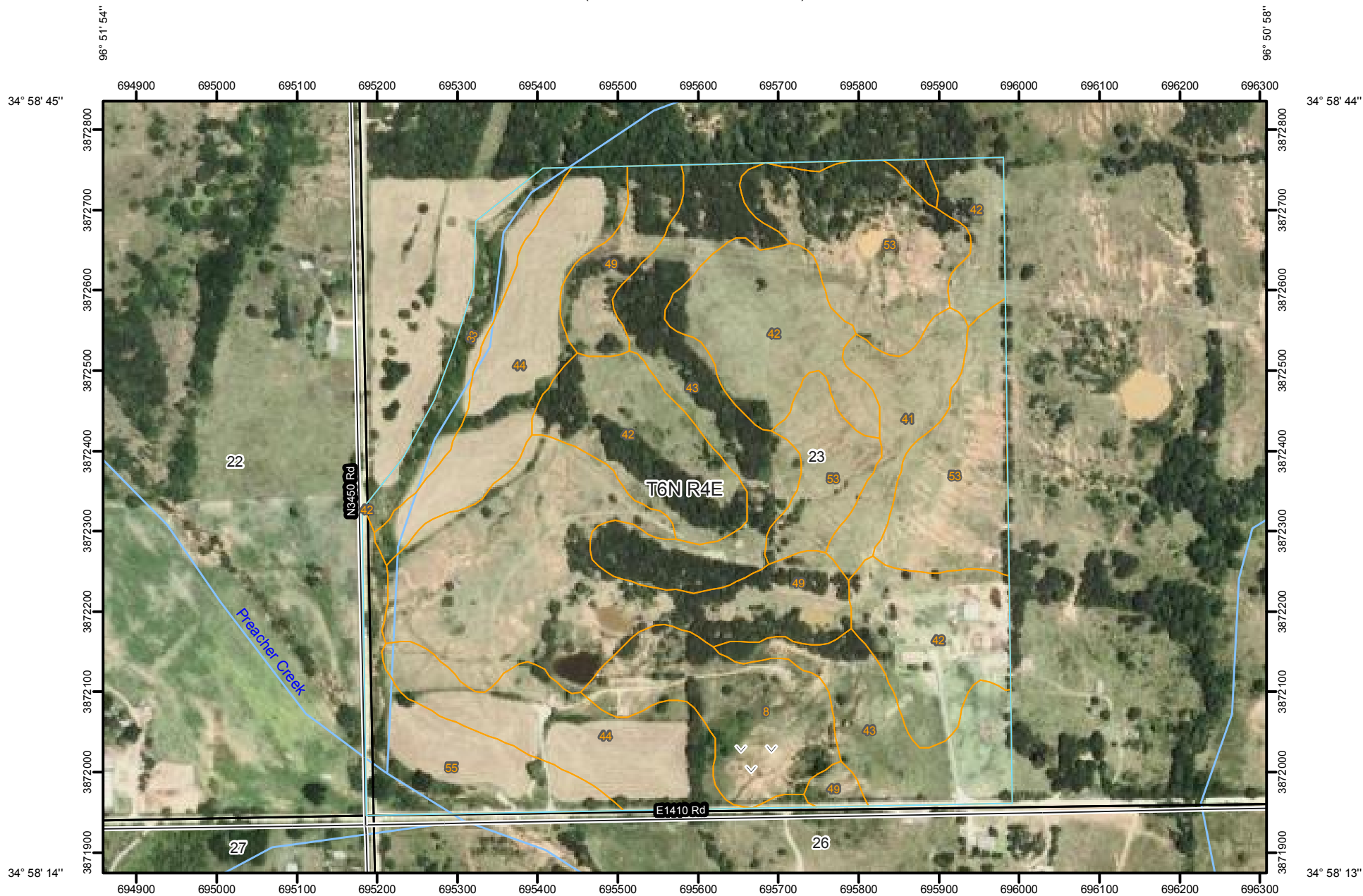
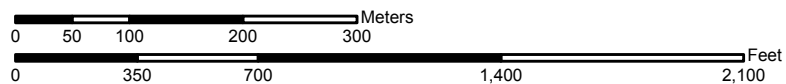


Soil Map—Pottawatomie County, Oklahoma  
(Martin 150 +/- ac 23-6-4 Pott.co)



Map Scale: 1:6,880 if printed on A size (8.5" x 11") sheet.



## MAP LEGEND

### Area of Interest (AOI)

 Area of Interest (AOI)

### Soils

 Soil Map Units

### Special Point Features

-  Blowout
-  Borrow Pit
-  Clay Spot
-  Closed Depression
-  Gravel Pit
-  Gravelly Spot
-  Landfill
-  Lava Flow
-  Marsh or swamp
-  Mine or Quarry
-  Miscellaneous Water
-  Perennial Water
-  Rock Outcrop
-  Saline Spot
-  Sandy Spot
-  Severely Eroded Spot
-  Sinkhole
-  Slide or Slip
-  Sodic Spot
-  Spoil Area
-  Stony Spot



Very Stony Spot



Wet Spot



Other

### Special Line Features



Gully



Short Steep Slope



Other

### Political Features



Cities



PLSS Township and Range



PLSS Section

### Water Features



Oceans



Streams and Canals

### Transportation



Rails



Interstate Highways



US Routes



Major Roads



Local Roads

## MAP INFORMATION

Map Scale: 1:6,880 if printed on A size (8.5" × 11") sheet.

The soil surveys that comprise your AOI were mapped at 1:24,000.

Please rely on the bar scale on each map sheet for accurate map measurements.

Source of Map: Natural Resources Conservation Service  
Web Soil Survey URL: <http://websoilsurvey.nrcs.usda.gov>  
Coordinate System: UTM Zone 14N NAD83

This product is generated from the USDA-NRCS certified data as of the version date(s) listed below.

Soil Survey Area: Pottawatomie County, Oklahoma  
Survey Area Data: Version 6, Sep 16, 2008

Date(s) aerial images were photographed: 6/28/2003

The orthophoto or other base map on which the soil lines were compiled and digitized probably differs from the background imagery displayed on these maps. As a result, some minor shifting of map unit boundaries may be evident.

## Map Unit Legend

Pottawatomie County, Oklahoma (OK125)			
Map Unit Symbol	Map Unit Name	Acres in AOI	Percent of AOI
8	Chickasha-Zaneis-Gullied land complex, 3 to 8 percent slopes	9.2	6.2%
33	Port loam, 0 to 1 percent slopes, occasionally flooded	5.3	3.6%
41	Stephenville fine sandy loam, 1 to 3 percent slopes	5.4	3.6%
42	Stephenville fine sandy loam, 3 to 5 percent slopes	28.5	19.2%
43	Stephenville-Darnell complex, 5 to 12 percent slopes	21.2	14.3%
44	Teller fine sandy loam, 3 to 5 percent slopes	20.2	13.7%
49	Grainola silty clay loam, 5 to 12 percent slopes	26.9	18.2%
53	Littleaxe and Stephenville soils, 3 to 8 percent slopes, severely eroded	22.7	15.4%
55	Yahola fine sandy loam, 0 to 1 percent slopes, occasionally flooded	8.6	5.8%
<b>Totals for Area of Interest</b>		<b>147.9</b>	<b>100.0%</b>