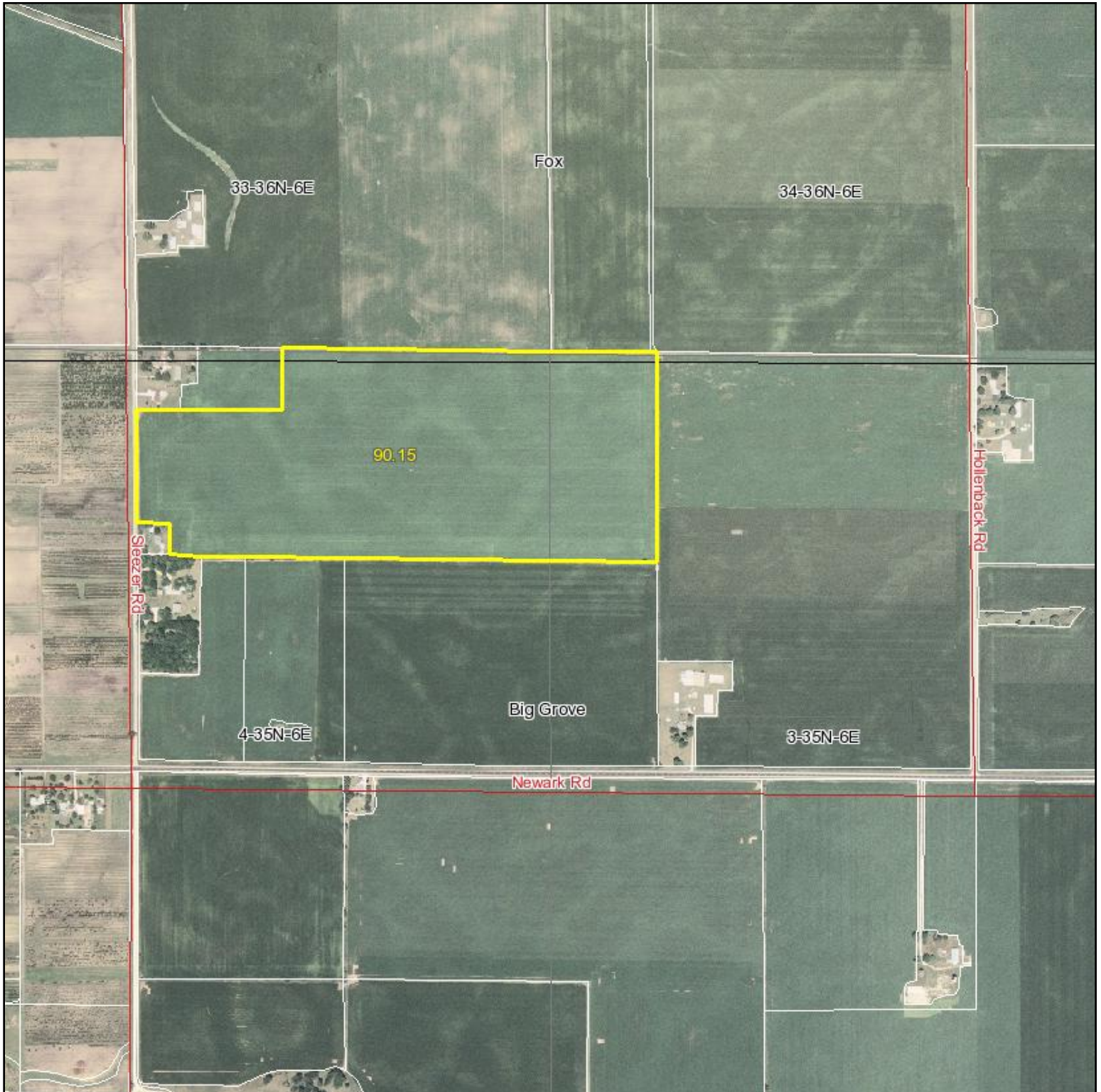


Aerial Map



Capital
Agricultural
Property
Services, Inc.

Maps provided by:



©AgriData, Inc. 2010

www.AgriDataInc.com

4-35N-6E
Kendall County
Illinois

map center: 41° 32' 28.68, 88° 32' 30.64

scale: 11979



1/28/2010

Field borders provided by Farm Service Agency as of 5/23/2008. Aerial photography provided by Aerial Photography Field Office. PLSS provided