

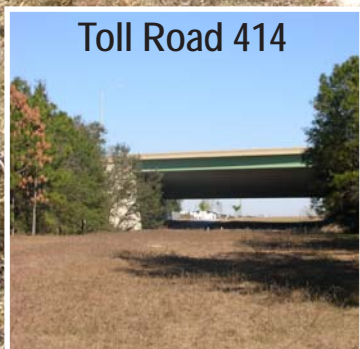
Stone Road - South Apopka Homesite

12.85 acres

***Excellent
Ranchette
Site!***



Toll Road 414



Land • Commercial • Conservation • Land Management
5120 S. Lakeland Drive, Suite 3 • Lakeland, FL 33813
Phone: 863-648-1528 • Toll Free: 1-877-518 LAND
www.saundersrealestate.com



SAUNDERS
REAL ESTATE

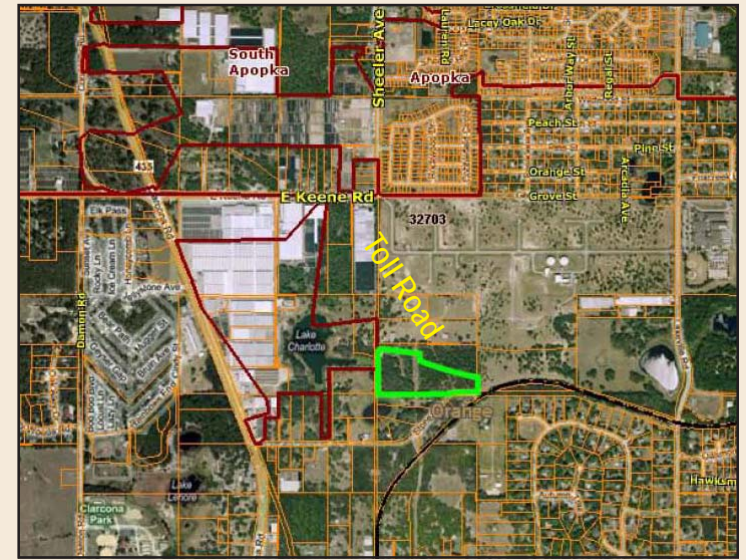
Stone Road - Apopka

Size: 12.85 +/- acres
Price: \$300,000
Frontage: 350 +/- ft. on Stone Rd
Location: 7739 Stone Rd, Apopka;
 Orange County
Nearest Intersection: Stone Rd and Clarcona Rd
Use: 1 unit to 5 acres
Fence: Barbed wire and post
Future Use: A-1
Water: Well & Septic
Utilities: Progress Energy
Wetlands: 100% uplands
Parcel #: 26-21-28-000000027

*A mix of beautiful
 planted pines
 & hardwoods*

*Prime homesite ...
 perfect location for
 horse lovers!*

*Close to other
 homesites with horses
 and stables.*



Driving Directions:

- From I-4 merge onto Maitland Blvd. heading west, which becomes Toll Road 414. Take the Toll Road to Keene Rd and exit, turning left.
- Turn left on Clarcona Rd.
- Turn left on Stone Rd.

*Quick &
 easy
 access to
 property!*



863-648-1528

www.saundersrealestate.com



While every attempt is made to provide as accurate information on this property offering as possible, COLDWELL BANKER COMMERCIAL SAUNDERS REAL ESTATE (CBCSRE) does not guarantee the accuracy thereof. Buyer shall rely entirely on their own information and inspection of property and records. © Copyright Coldwell Banker Commercial Saunders Real Estate, All Rights Reserved, Worldwide: All content inclusive of text, graphics, images, and logos is the property of CBCSRE. You may not copy this material by any means (including electronic copies), reproduce, duplicate, scan, modify, publish, transfer, use on your own website, distribute, or create a derivative work without receiving written permission from CBCSRE.

© 2010 Coldwell Real Estate Corporation. Coldwell Banker Commercial® is a registered trademark licensed to Coldwell Banker Real Estate Corporation. An Equal Opportunity Company. Each Office is Independently Owned And Operated.

11310A-JE