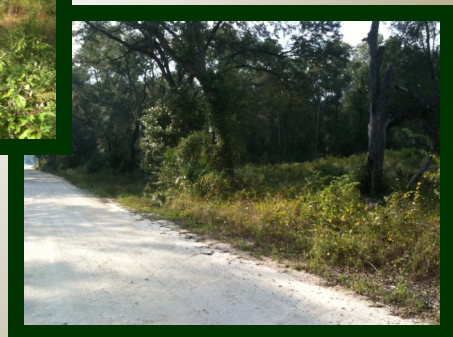
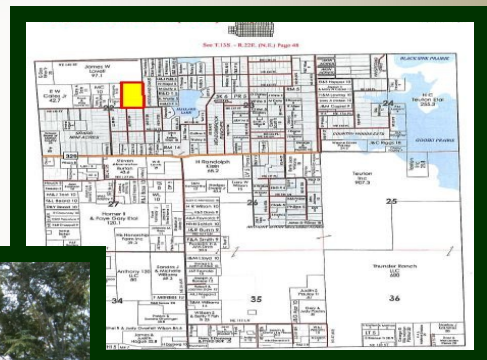
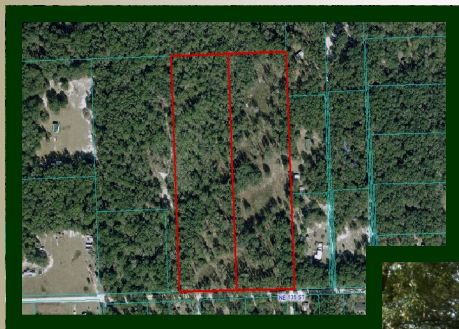


23.62 acres - \$5,999/ac

Sparr, FL

- **WHAT AN OPPORTUNITY!!!**
- Beautiful acreage with GREAT LOCATION (minutes from town)
- 99% HIGH & DRY with gorgeous live oak hammocks
- Located on NE 135th St (limerock road) just 1/2 mile N of Hwy 329
- May be divided into two 11± acre tracts (subject to pricing adj.)
- Marion County Tax Parcel ID #'s 07905-001-00 & 07905-002-00
- Owner financing available (15% Down, 8.9%, Pmt = \$1,183)
- Call today for more information!



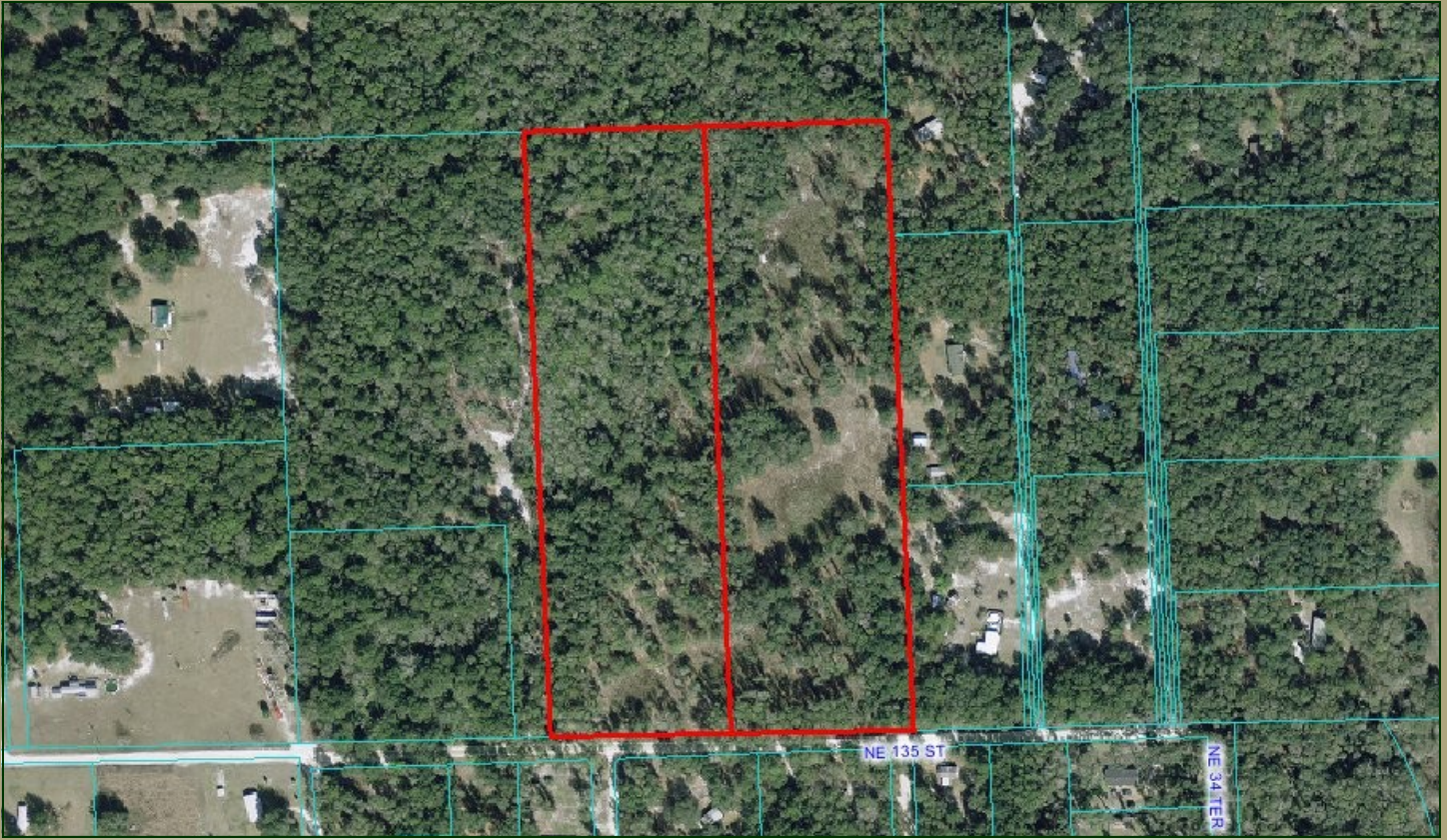
\$141,696

www.mcbrideland.com

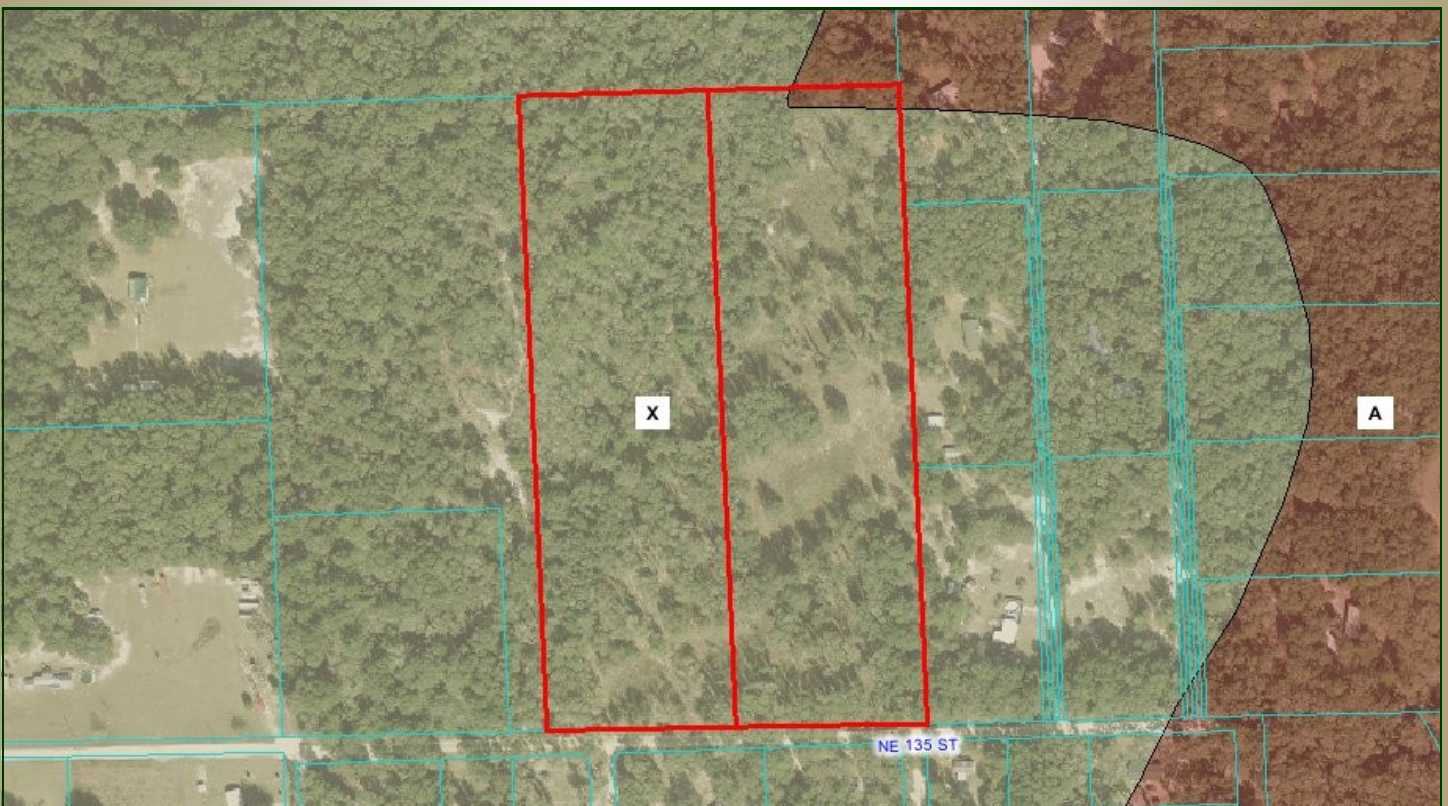
 **McBRIDE**
LAND & DEVELOPMENT CO.
Licensed Real Estate Broker

Phone: (352) 401-3755
Fax: (352) 401-3757

Aerial



Flood Plain



Plat Map

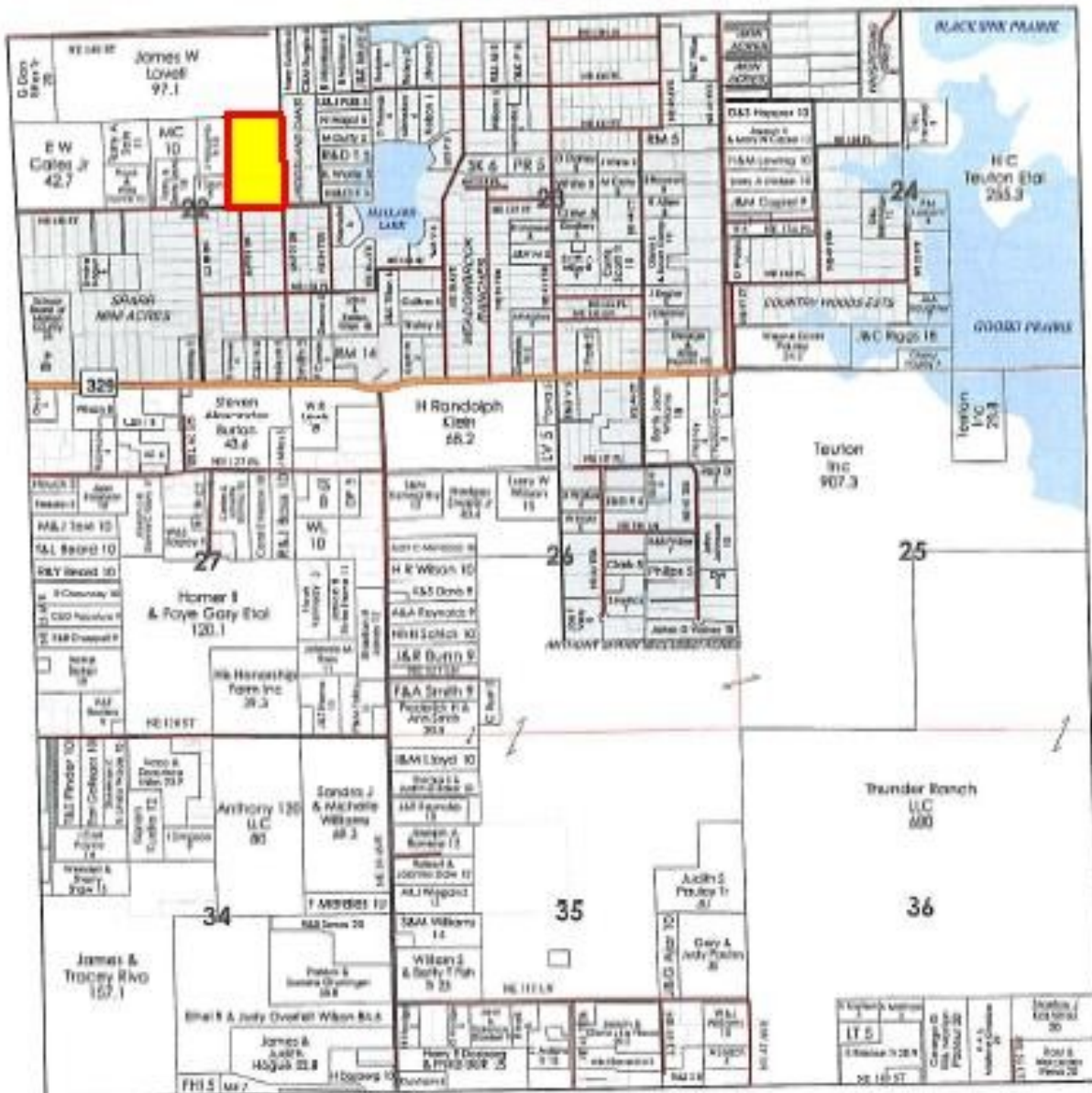
23.62 acres - Sparr, FL

T.13S. - R.22E. (S.E.)



(S.E.)

See T.13S. - R.22E. (N.E.) Page 48



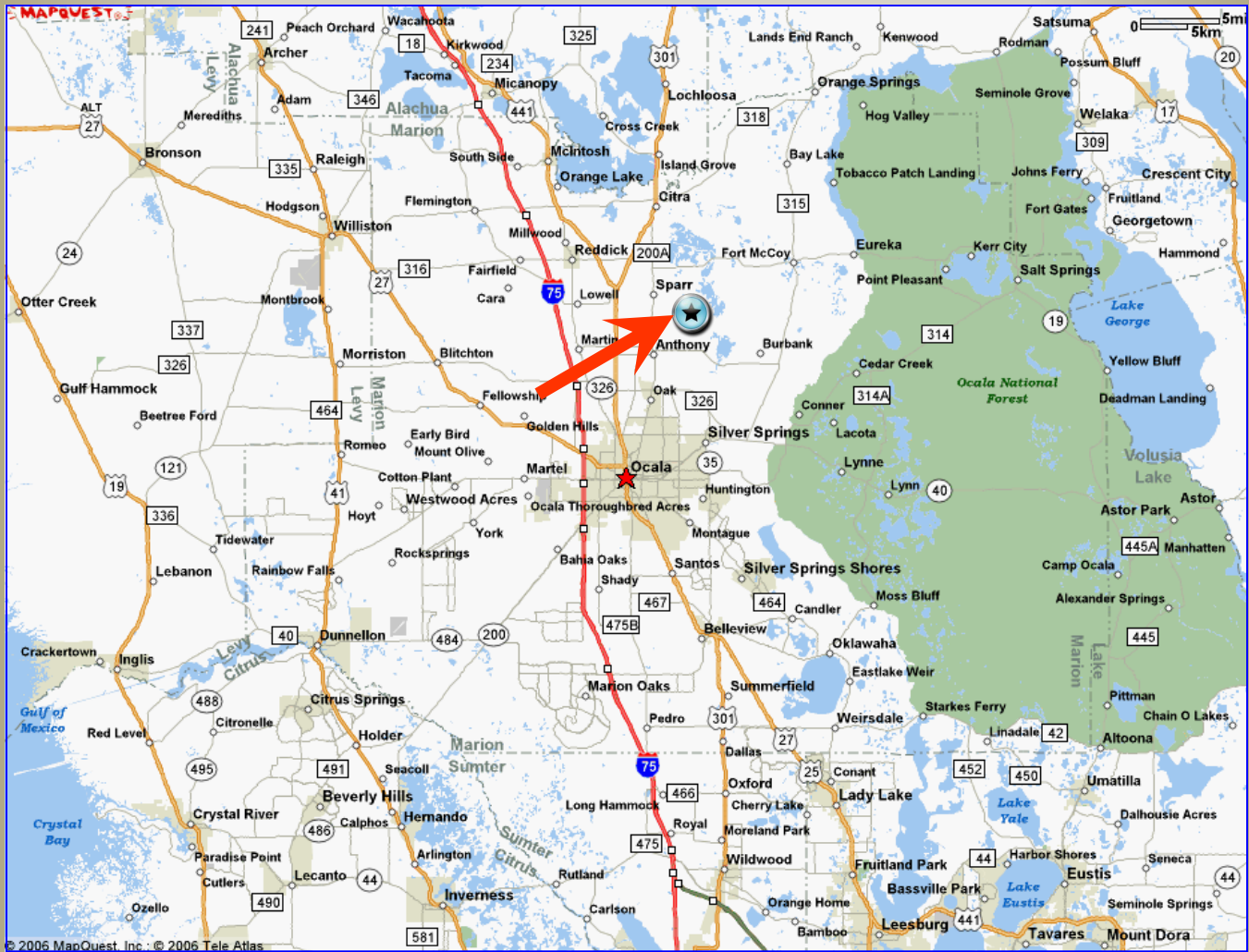
See T.13S. - R.22E. (S.W.) Page 49

See T.13S. - R.22E. (S.W.) Page 49

See T.14S. - R.22E. (N.E.) Page 76

Directions

23.62 acres - Sparr, FL



From Ocala:

Take Jacksonville Road N to Hwy 329, make right (heading East) to NE 30th Court. Make left on NE 30th Court (heading North) until it dead ends into NE 135th St. (approx. ½ mile). Make a right (heading East) on NE 135th St for approximately 1/8 of a mile to property on the left (North side of the road).