

120 acres - \$4,800 / AC!

Marion County, FL

- **SPORTSMEN TAKE NOTICE!!**
- Surrounded by Ocala National Forest makes this piece feel much bigger than it is
- Marion County Tax Parcel ID #'s 31883-000-00 & 31888-000-00
- 2009 RE Taxes = \$425.96
- Beautiful Pines & Oaks
- TONS OF WILDLIFE - deer, turkey, quail...
- Division potential after purchase w/ County approval
- Located minutes from Ocala just off Sharpes Ferry Road
- Lime-rock Road Frontage
- Call today for more information!



\$576,000

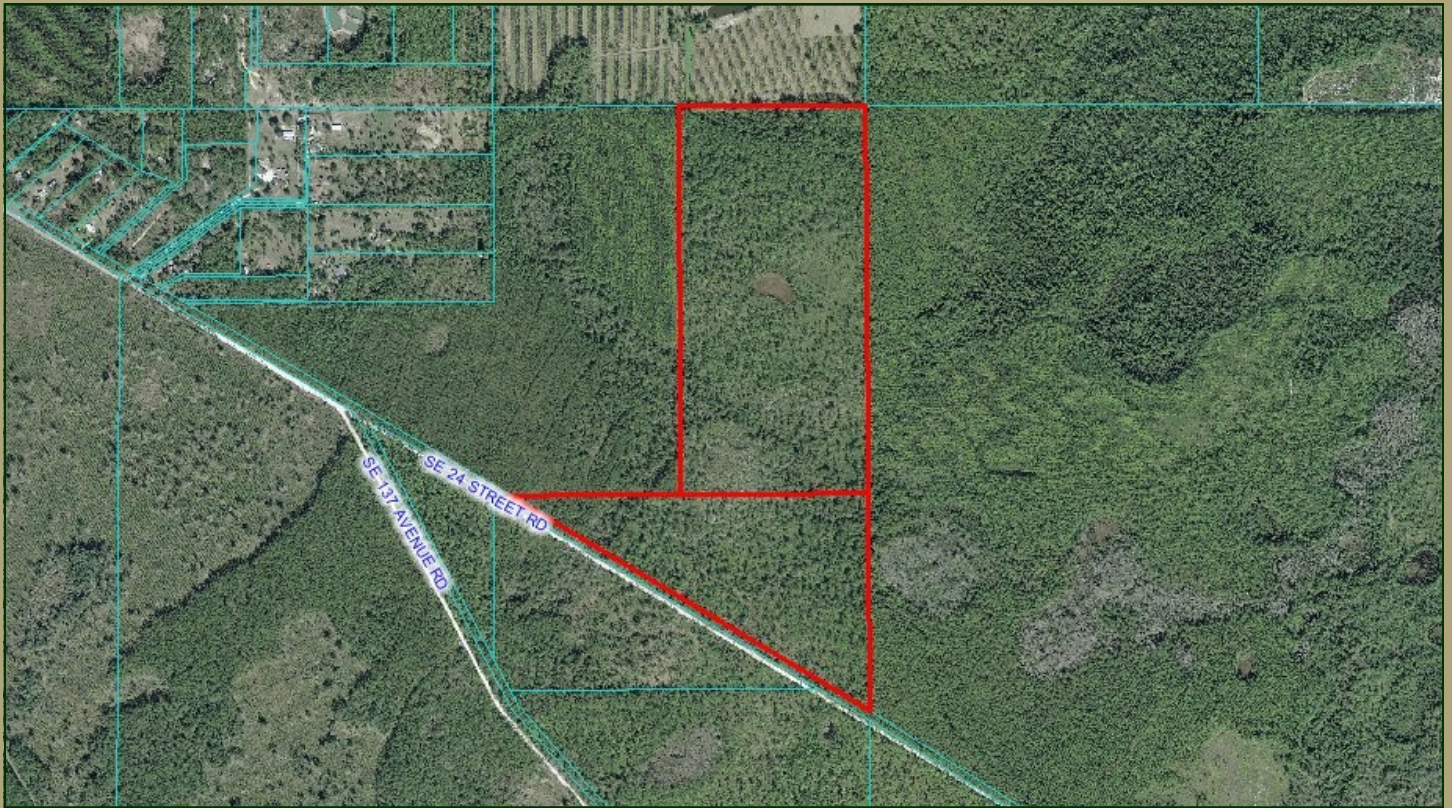
www.mcbrideland.com



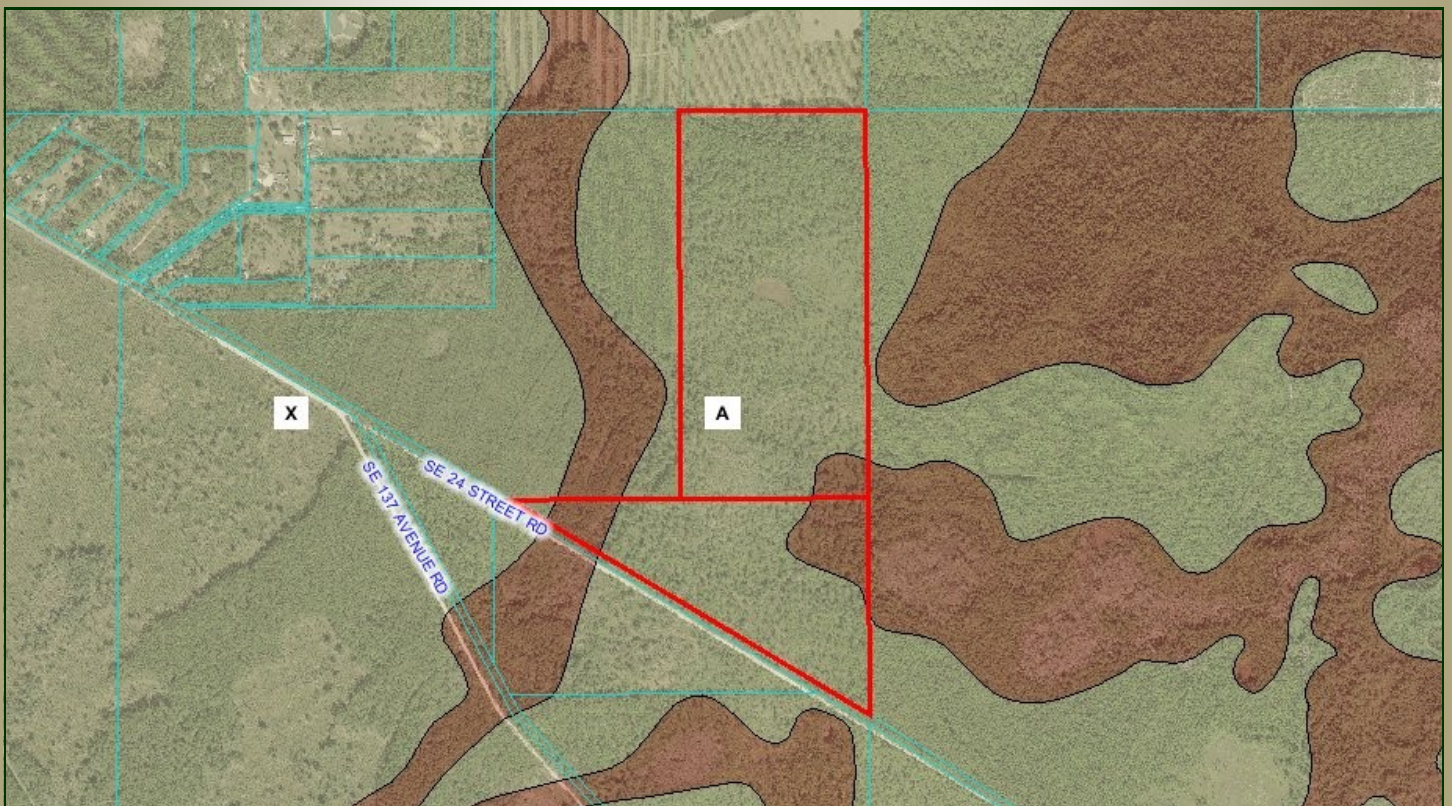
Phone: (352) 401-3755

Fax: (352) 401-3757

Aerial



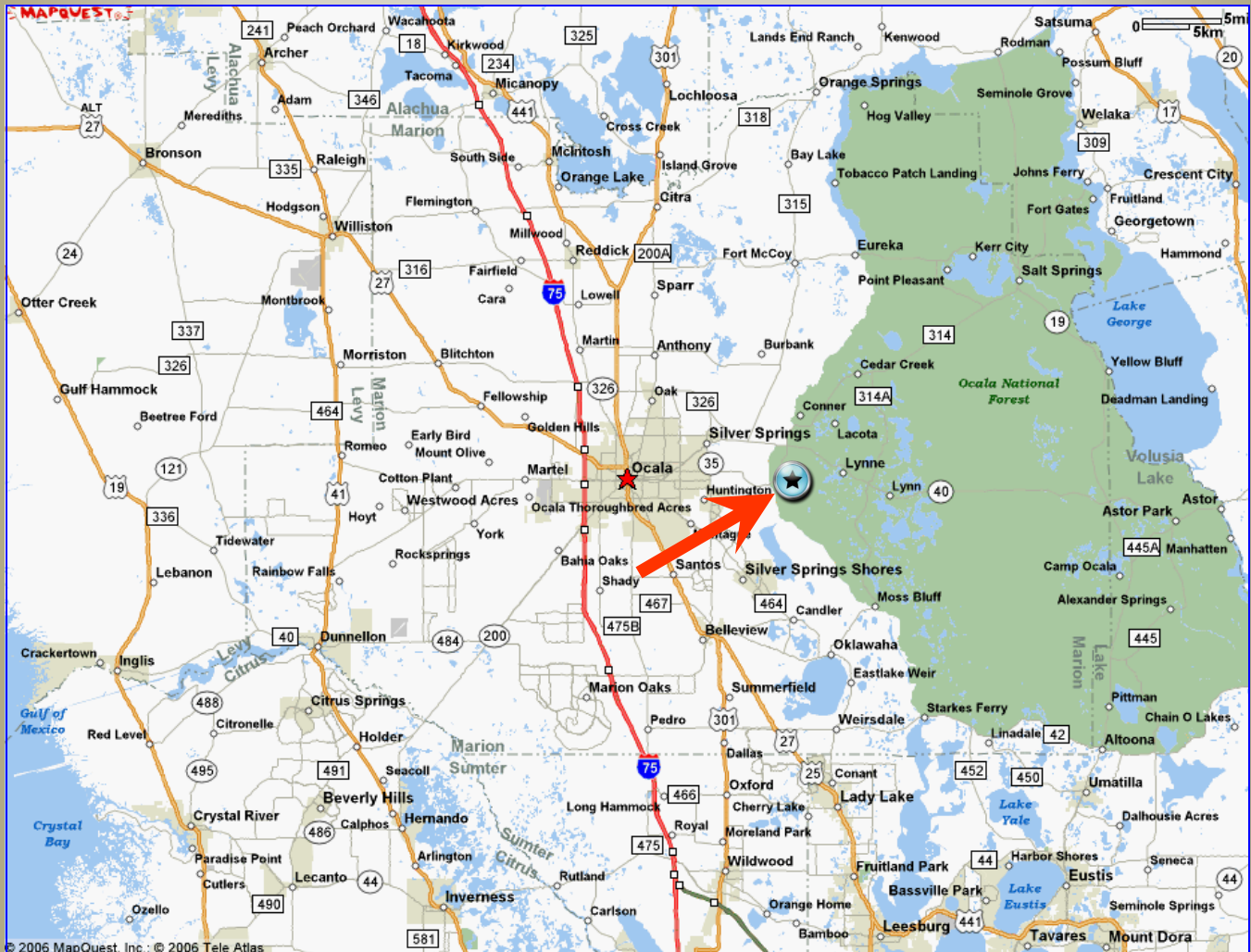
Flood Plain





Directions

120 Acres



From Ocala:

Take Hwy 40 (aka Silver Springs Blvd) East. Make Right (heading South) on CR 314 at Nuby's Corner. Take CR 314 approximately 2.25 miles to SE 1st Street Road (just before Sharpes Ferry Bridge). Make a Left on SE 1st Street Road (heading SE) for approximately 3/4 mile to SE 24 Street Road. Make a Right on SE 24 Street Road and take for approximately 1 mile. Property located on the Left (North side of the road).