



215 E. San Marnan P.O. Box 2396
Waterloo, IA 50704-2396
Ph: 319-234-1949 • Fax: 319-234-2060

WE ARE PLEASED TO PRESENT

**76.3 Acres m/l
Black Hawk County, Iowa**

OWNER: Wahlberg Family Trust &
Virginia Rae Borrok

LOCATION: At interesection of Garling Road and
Harmon Road east of LaPorte City.

ADDRESS: S 1/2 SE 1/4 Section 21, Township 87
North, Range 4 West of the 5th P.M., Black Hawk
County, Iowa.

LEGAL: S 1/2 SE 1/4 Section 21, Township 87
North, Range 4 West of the 5th P.M., Black Hawk
County, Iowa.

PRICE/TERMS: \$457,800.00

RE TAXES: 2007-2008, payable 2008-2009 \$1,452

POSSESSION: Negotiable

SCHOOL DIST: UNION SCHOOL DISTRICT

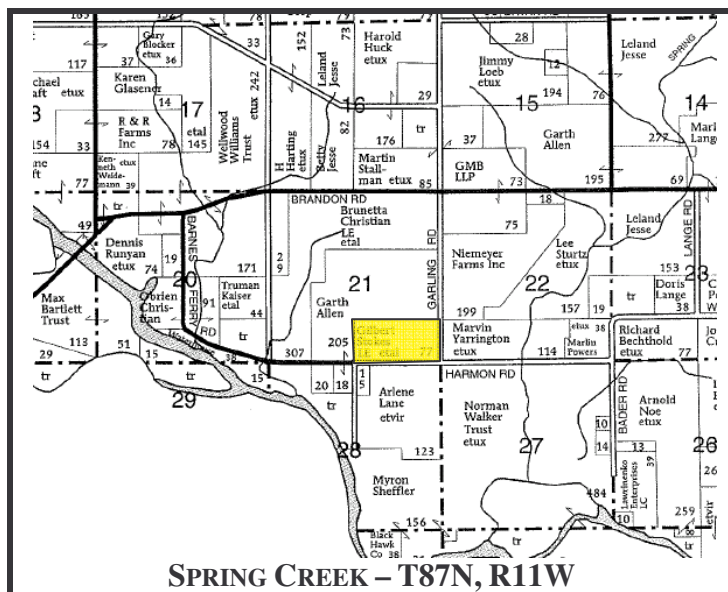
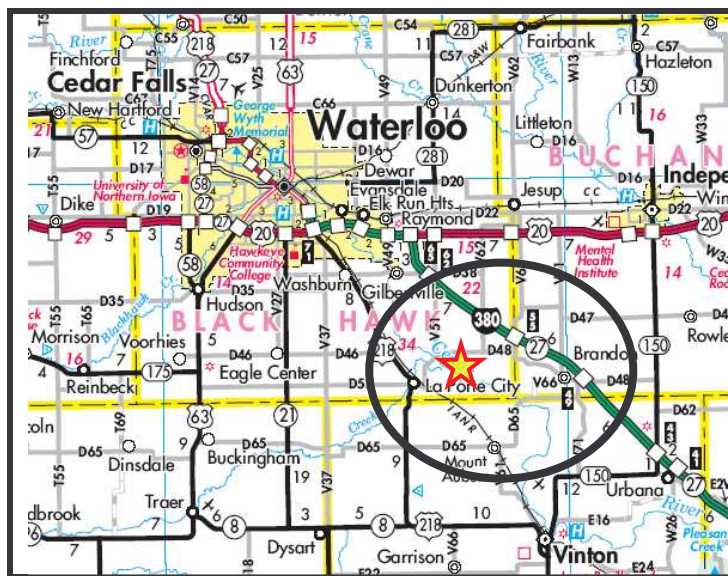
FSA INFO: 147

| Crop | Base Ac | Direct Yld | CC Yld |
|----------|---------|---------------|-----------|
| Corn | 76.3 | 125 | 125 |
| Cropland | 76.3 | | |

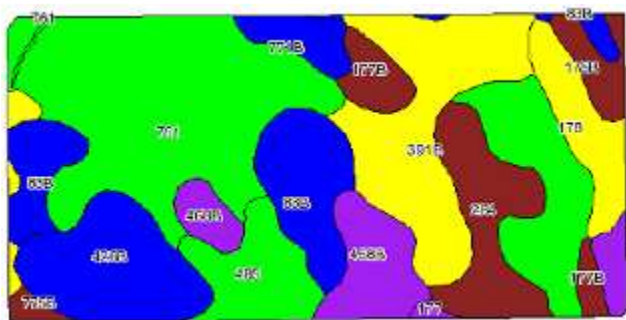
SOILS:

AVERAGE CSR: 79

BUILDINGS: None



*The information gathered for this brochure is from sources deemed reliable,
but cannot be guaranteed by Hertz Farm Management, Inc. or its staff.*

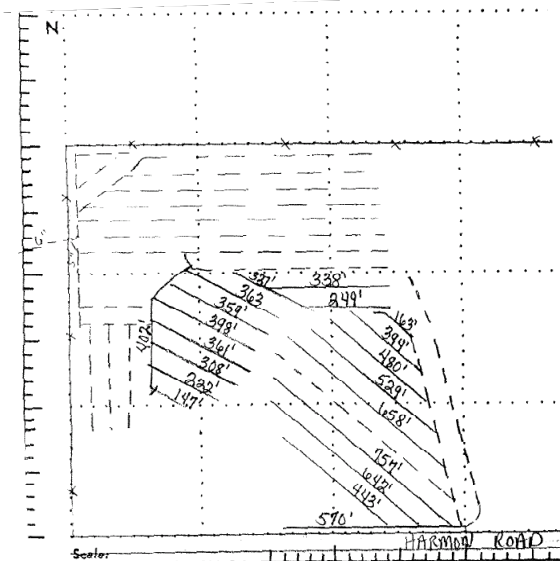
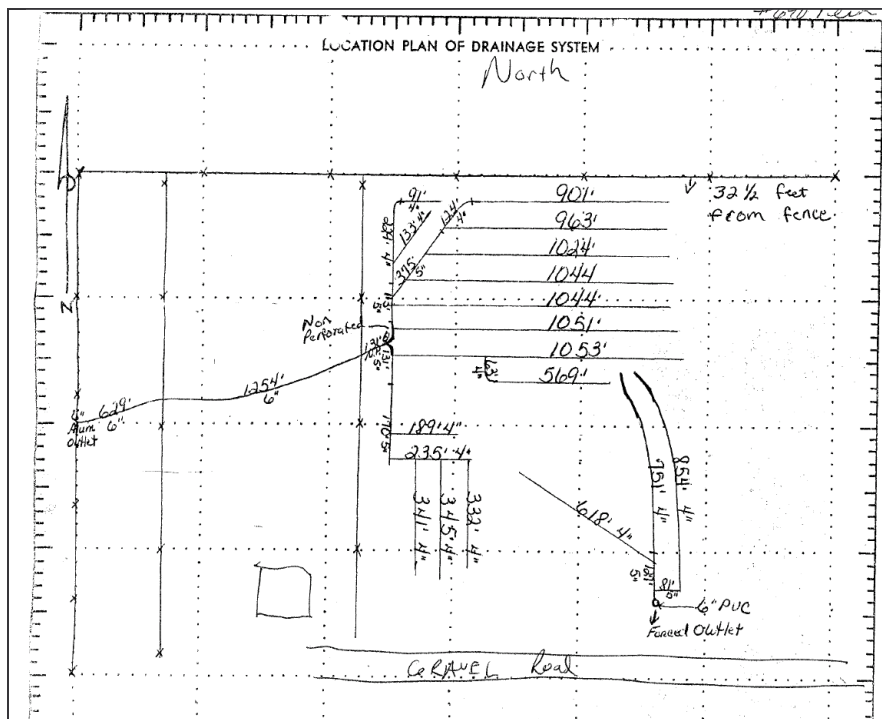


**SEC 21, T87N, R4W of 5th P.M.,
BLACK HAWK COUNTY, IA**

| |
|----------|
| 0 - 20 |
| 21 - 30 |
| 31 - 40 |
| 41 - 50 |
| 51 - 60 |
| 61 - 70 |
| 71 - 80 |
| 81 - 90 |
| 91 - 100 |

Acres shown : 76.8
Average CSR : 79

| Code | Soil Description | CSR Legend | Acres | Percent of field | Non-Irr Class | CSR | Corn | Soybeans |
|------------------|--|------------|-------|------------------|---------------|-----|-------|----------|
| 761 | Franklin silt loam, 1 to 3 percent slopes | | 18.6 | 24.5% | I | 90 | 209 | 56 |
| 485 | Spillville loam, 0 to 2 percent slopes, occasionally flooded | | 10.5 | 13.7% | IIw | 92 | 211 | 57 |
| 391B | Clyde-Floyd complex, 1 to 4 percent slopes | | 10.3 | 13.4% | IIw | 72 | 184 | 50 |
| 83B | Kenyon loam, 2 to 5 percent slopes | | 7.8 | 10.1% | IIIe | 86 | 203 | 55 |
| 426B | Aredale loam, 2 to 5 percent slopes | | 7 | 9.1% | IIIe | 85 | 202 | 55 |
| 284 | Flagler sandy loam, 0 to 2 percent slopes | | 5.6 | 7.2% | IIIs | 50 | 155 | 42 |
| 468B | Dunkerton sandy loam, 2 to 5 percent slopes | | 5.1 | 6.6% | IIIe | 62 | 171 | 46 |
| 178 | Waukeel loam, 0 to 2 percent slopes | | 3.6 | 4.8% | IIIs | 79 | 194 | 52 |
| 177B | Saudef loam, 2 to 5 percent slopes | | 2.3 | 3.0% | IIIe | 58 | 165 | 45 |
| 771B | Wautkeek silt loam, 2 to 5 percent slopes | | 1.7 | 2.3% | IIIe | 87 | 204 | 55 |
| 175B | Dickinson fine sandy loam, 2 to 5 percent slopes | | 1.7 | 2.2% | IIIe | 55 | 161 | 43 |
| 177 | Saudef loam, 0 to 2 percent slopes | | 1.2 | 1.6% | IIIs | 63 | 172 | 46 |
| 911B | Colo-Ely complex, 2 to 5 percent slopes | | 0.7 | 0.9% | IIIe | 75 | 188 | 51 |
| 775B | Billet sandy loam, 2 to 5 percent slopes | | 0.5 | 0.7% | IIIe | 52 | 157 | 42 |
| Weighted Average | | | | | | 79 | 193.8 | 52.3 |



The information gathered for this brochure is from sources deemed reliable, but cannot be guaranteed by Hertz Farm Management, Inc. or its staff.