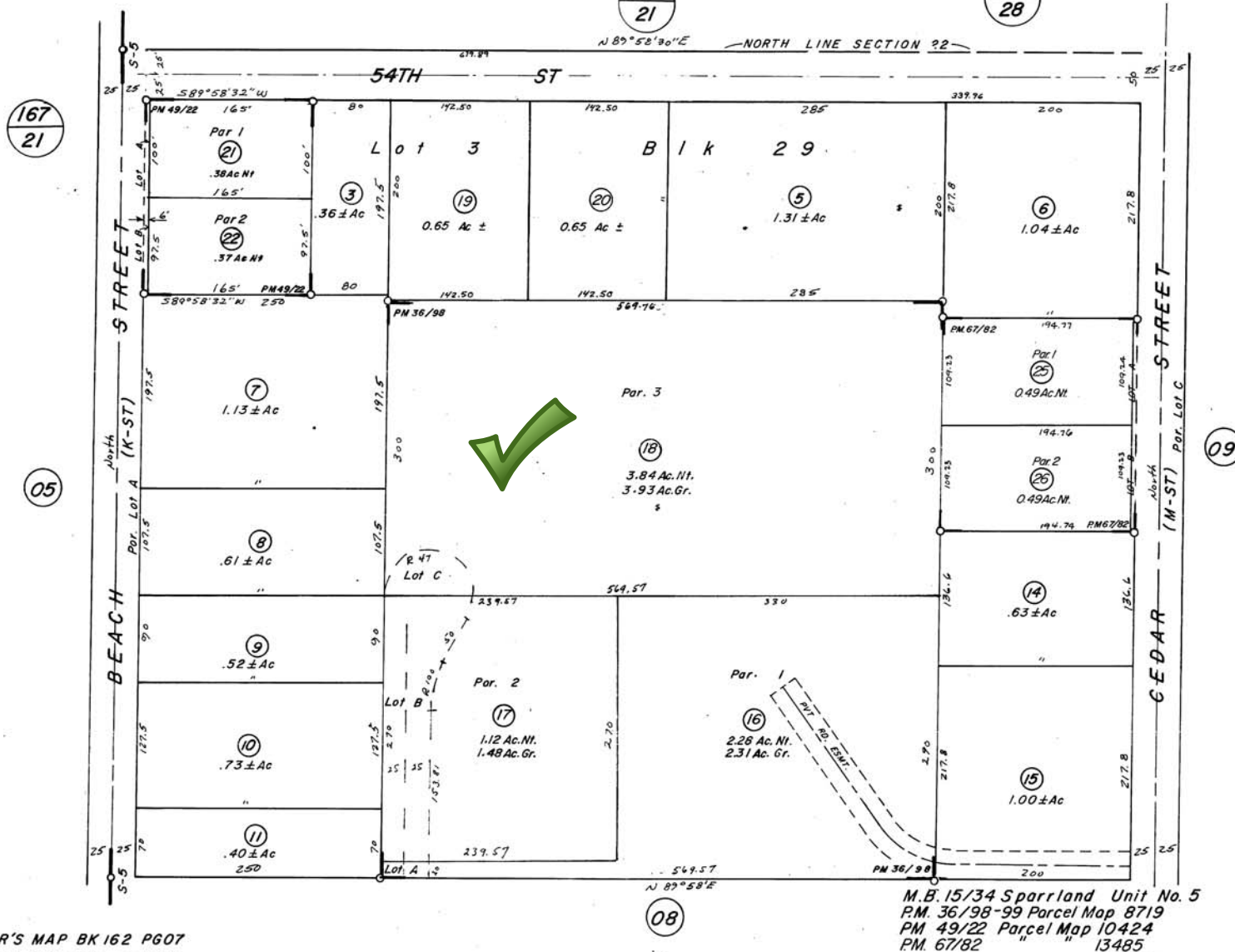


7-32-1
162-07



ASSESSOR'S MAP BK 162 PG 07
RIVERSIDE COUNTY, CALIF.

M.B. 15/34 Sparrland Unit No. 5
P.M. 36/98-99 Porcel Map 8719
P.M. 49/22 Parcel Map 10424
P.M. 67/82 " " 13485

DATE	OLD NO.	NEW NO.
8/77	12	16-18
7/78	4	19, 20
10/78	2	21, 22
11/78	1	23, 24
	23	SK167pg26
9/79	13	25, 26
3/96	24	ST.

JAN 1975