

The Club at Plantation Pointe



- Great location convenient to Columbia, SC and within an easy drive of Charlotte, NC
- Approximately 2,479 feet of frontage along Lake Murray
- Public Water on the tract, Public Sewer available for the tract —line will need to be extended & lift station installed
- Electricity with South Carolina Electric & Gas and Natural Gas on tract
- Current zoning is for Limited Commercial, General Commercial and Single Family Residential
- Boat slips are permitted and in place, boat ramp has approval by letter and may be permitted and twelve additional private docks are verbally approved and may be permitted
- Two 16' gazebos are permitted and in process of construction

200+/- Acres Located On A Peninsula of Lake Murray

This gorgeous, gently sloping tract presents a multitude of opportunities with four buildings on site including the Jackson Stewart House (circa 1842). The tract has zoning for Limited Commercial and General Commercial on the waterfront portion of the tract and single family on the off water portion.

Some possible uses are low rise condominiums, marina, bed & breakfast, restaurant, club house and single family homes. This tract would be a great possibility for a mixed use development.

In addition, you have great big water views, a pool and tennis courts on the waterfront portion of the tract.



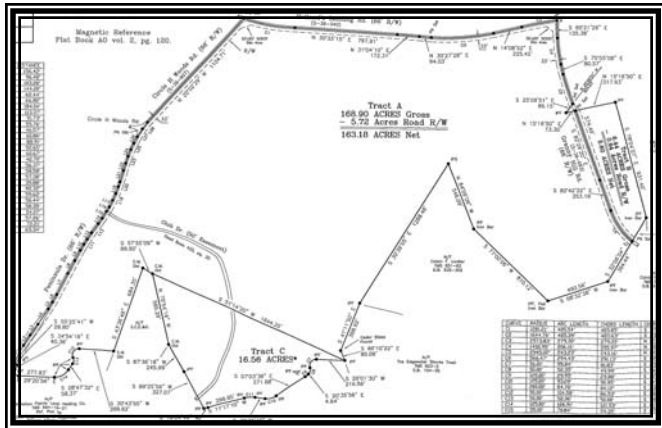
All information is assumed to be accurate and substantially correct but no assumption of liability is intended. Neither the seller nor the agent or representatives warrant the completeness or accuracy of the information. Seller does not guarantee timber volumes, values, acreages (total, woodland/cropland, stand or otherwise), tree ages or the condition and/or function of any improvements, including but not limited to all buildings, machinery, appliances, wells, equipment, livestock and ponds. No representatives or warranties are expressed or implied as to the property, its condition, boundaries or logging feasibility. Prospective buyers should satisfy themselves as to the accuracy of this information.

**For More Information Contact:
Charlie Shaw at (704) 527-6780 ext 363**

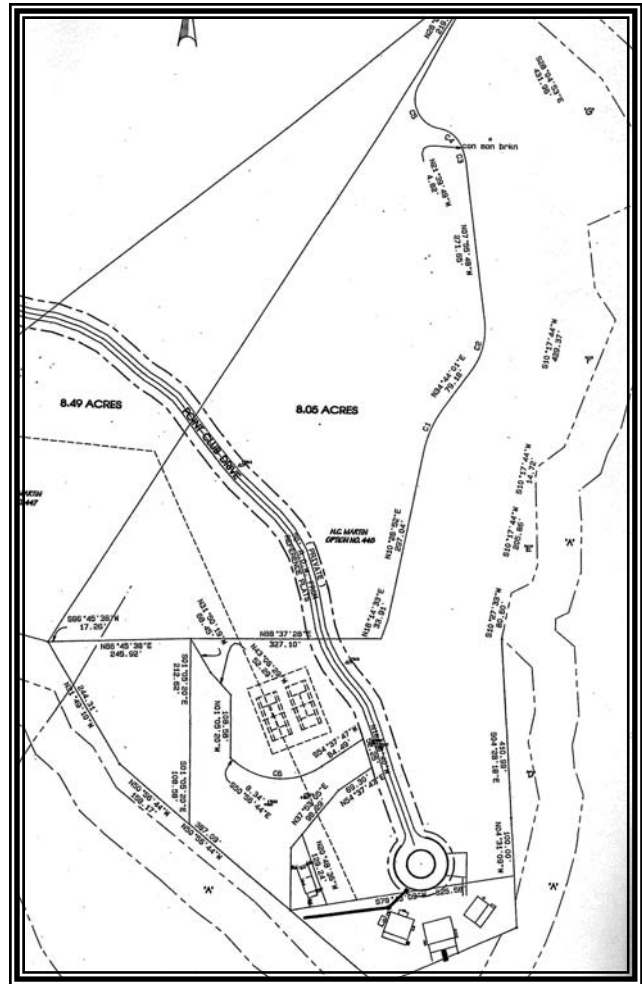


The Club at Plantation Pointe

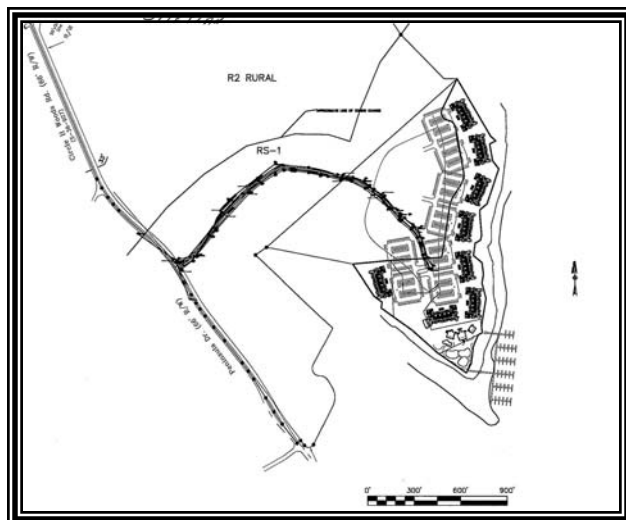
Plats and Preliminary Site Plan



Plats of Waterfront and Off Water Portions of the Tract



Preliminary Site Plan for the Waterfront Portion of the Tract



All information is assumed to be accurate and substantially correct but no assumption of liability is intended. Neither the seller nor the agent or representatives warrant the completeness or accuracy of the information. Seller does not guarantee timber volumes, values, acreages (total, woodland/cropland, stand or otherwise), tree ages or the condition and/or function of any improvements, including but not limited to all buildings, machinery, appliances, wells, equipment, livestock and ponds. No representatives or warranties are expressed or implied as to the property, its condition, boundaries or logging feasibility. Prospective buyers should satisfy themselves as to the accuracy of this information.

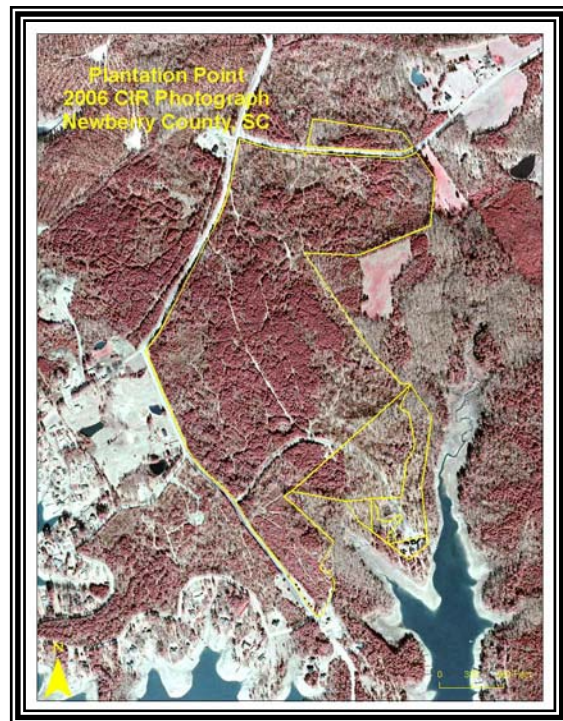
The Club at Plantation Point

Aerial Photos with Property Boundary Overlay



**1999 Photo- Depicts Current
Lake Levels in 2007 and Full
Pool Elevation**

**2006 Photo- Depicts Lake Levels
During Draw Down Phase
for Dam Repair and Construction**



All information is assumed to be accurate and substantially correct but no assumption of liability is intended. Neither the seller nor the agent or representatives warrant the completeness or accuracy of the information. Seller does not guarantee timber volumes, values, acreages (total, woodland/cropland, stand or otherwise), tree ages or the condition and/or function of any improvements, including but not limited to all buildings, machinery, appliances, wells, equipment, livestock and ponds. No representatives or warranties are expressed or implied as to the property, its condition, boundaries or logging feasibility. Prospective buyers should satisfy themselves as to the accuracy of this information.