

SRE

SUDDERTH
REAL
ESTATE

\$269,900

Contact: Rodger Alexander
903/587-3301 Ext.103
972/658-2084 Cell
rodger@sretexas.com
www.sretexas.com



17870 HWY 78 , Leonard



Build GREEN.

Build with STEEL.

Build DIFFERENT

At Silver Plumline Custom Homes, we specialize in steel frame construction. There are many advantages to building your home using a steel frame as opposed to traditional wood frames. Below are just a few of the many advantages that you will enjoy utilizing steel on your next home. We would love the opportunity to meet with you to discuss this method and will be more than happy to address any questions that you might have.

Steel is....

- ~ Three times stronger than wood
- ~ Withstands winds up to 150 mph
- ~ Noncombustible & fire retardant
- ~ Vermin & termite proof
- ~ Consistent in quality and price
- ~ The most recycled material today
- ~ Builds straighter walls
- ~ Not treated with cancer causing chemicals
- ~ Durable, with greater design flexibility

No Shrinking, Warping or Twisting

In fact, steel framing can be used in any house design from traditional to modern and from starter to luxury homes. Exterior finishes and the interior of a steel-framed home will look exactly like you are accustomed. However, since steel framing won't warp, rot or shrink, your walls will be straighter.

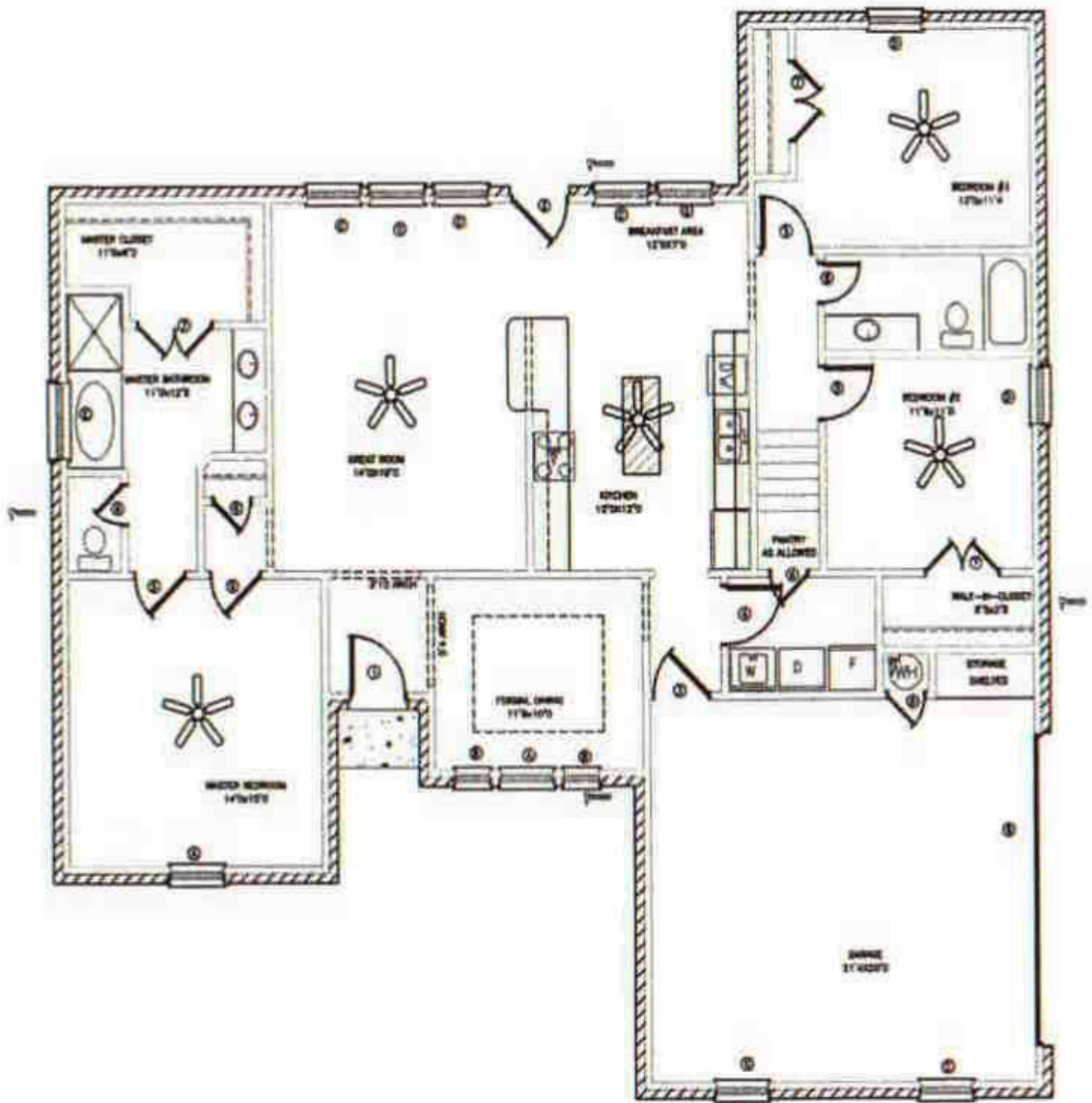
Better Performance in High Wind/Seismic Zones

Steel framing has the highest earthquake resistance rating in today's building design. Since the connections are made with screws, steel framing can provide greater protection in seismic and high wind areas.

Superior Product

Choosing steel framing for your home is not only practical, it means buying a superior product. Steel framing is the smart choice for your home.

These are just a FEW of the advantages of building with steel.



Floor Plan

3 / 4 Bedroom 2 Bath 2500 +/- sq.ft. Steel Frame home with a Brick/Rock Combo gives this home a wonderful drive up appeal. Resting on two and half acres near Leonard. Upgrades through out the home : Ceramic Tile, Kitchen Cabinets, Kitchen Counter Tops, Built in in the Master Bath and a Bay Window in the Master Bedroom. An upstairs Bonus Room could be Bedroom / Study or Media Room. The Colors and Design give this home a very Calming Atmosphere. A Real touch of class in the Country

