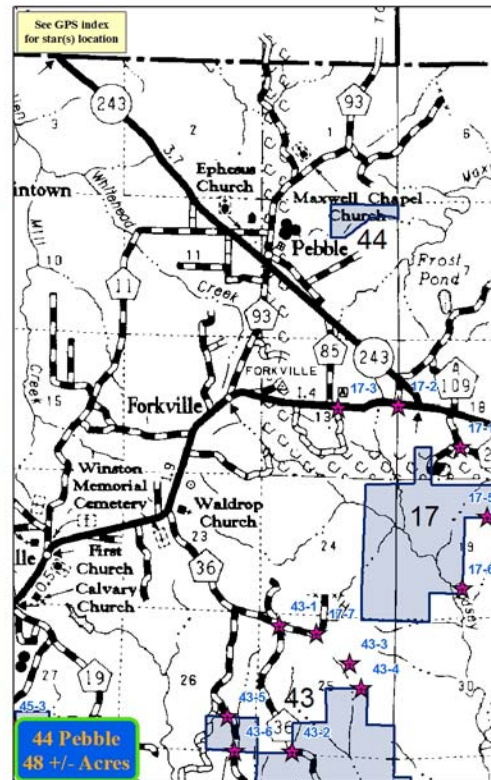
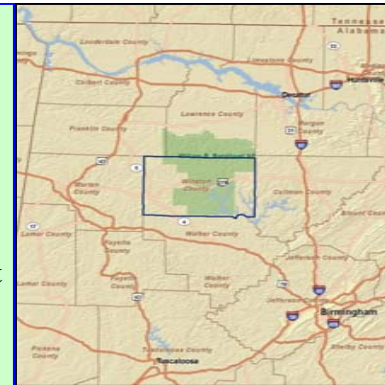


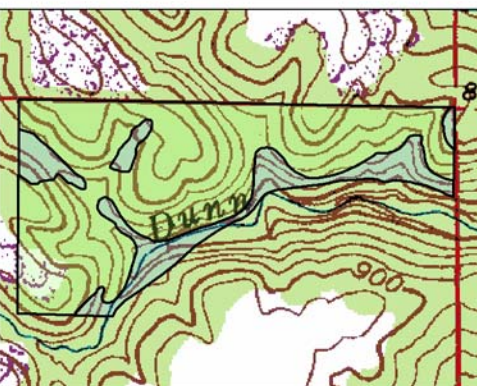
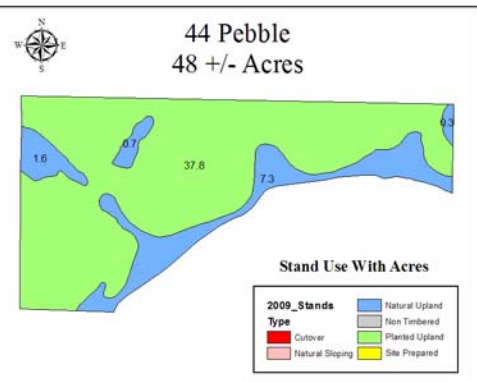
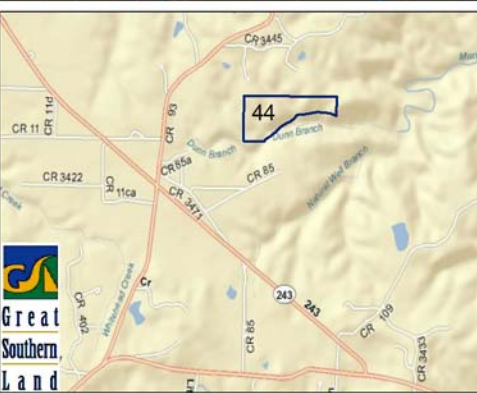
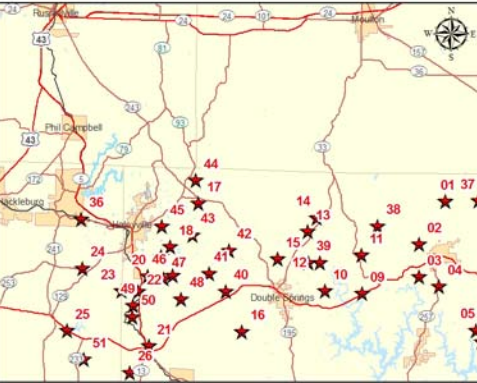


## 44 PEBBLE (RMK 7938)

Offered for \$180,000 (\$3,776 per acre)  
 Winston County  
 48+/- total acres  
 Joins the Bankhead National Forest  
 Dunn Branch is south property line  
 38 acres of sawtimber and Chip'N'Saw can be cut  
 right now  
 Buyer needs to negotiate access  
 10 acres of natural timber  
 Planted pine: 38 acres 1980



44 Pebble  
 48 +/- Acres



For A List Of All The RMK Timberland Group Tracts  
 Offered By Great Southern Land Visit:

[www.GreatSouthernLand.com](http://www.GreatSouthernLand.com)

**GREAT SOUTHERN LAND, LLC**

4027 U.S. Highway 231

Wetumpka, AL 36093

(800) 782-LAND (5263) - (334) 567-0924 Office—(334) 567-8024 Fax

**Eddie Stone, RF, Listing Agent**

205-702-4420 office

205-837-4466 cell

[edstone@windstream.net](mailto:edstone@windstream.net)

**Fletcher Majors, ALC, Broker**

334-567-0924 ext. 205

334-328-9278 cell

[Fletcher@GreatSouthernLand.com](mailto:Fletcher@GreatSouthernLand.com)



