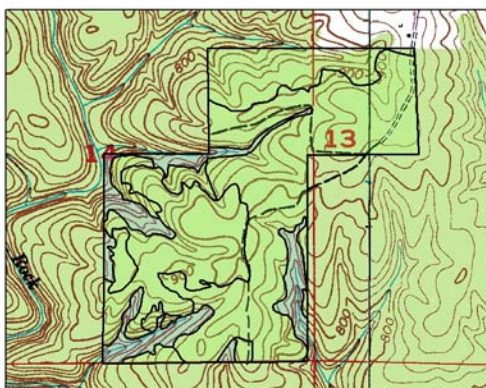
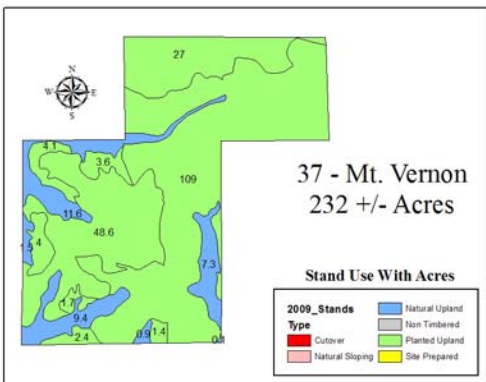


### 37 MT. VERNON (RMK 8029)

Soliciting offers  
Winston County  
232+/- total acres  
Almost surrounded by USFS Bankhead National Forest  
Located at end of CR 3072 (Turn south from CR 50)  
Great timberland investment surrounded by National Forest  
31 acres of natural timber  
Planted pine: 9 acres 1985, 27 acres 1989, 113 acres 2003  
& 52 acres 2007



For A List Of All The RMK Timberland Group Tracts  
Offered By Great Southern Land Visit:

[www.GreatSouthernLand.com](http://www.GreatSouthernLand.com)

**GREAT SOUTHERN LAND, LLC**

4027 U.S. Highway 231

Wetumpka, AL 36093

(800) 782-LAND (5263) - (334) 567-0924 Office—(334) 567-8024 Fax

**Eddie Stone, RF, Listing Agent**

205-702-4420 office

205-837-4466 cell

[edstone@windstream.net](mailto:edstone@windstream.net)

**Fletcher Majors, ALC, Broker**

334-567-0924 ext. 205

334-328-9278 cell

[Fletcher@GreatSouthernLand.com](mailto:Fletcher@GreatSouthernLand.com)



