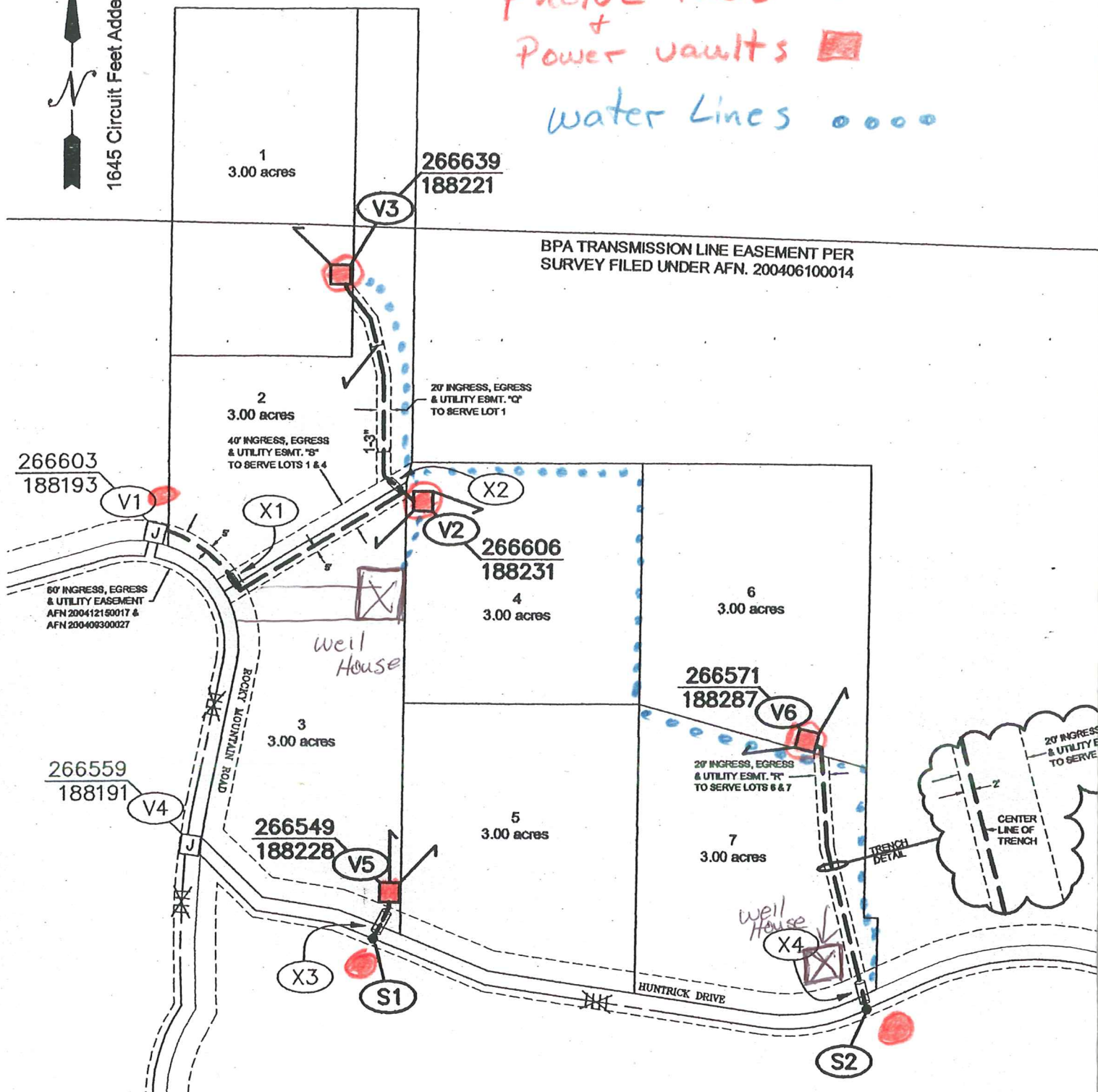




Phone Pads ●  
+  
Power vaults ■  
water Lines .....



## SITE PLAN

## CROSSINGS CONDUIT TABLE

X-ING NO.	Location		POWER			Length (ft)	Remarks (type of crossing) (Primary, Feeder, Secondary, St. Light Gas only, etc.,)
	from	to	Size (in)	Type sched	Qty each		
X01	Lot 2	Lot 3	2	Sch 80	1	40	Primary
X02	V2	Lot 2	2	Sch 80	1	40	Primary
X03	V5	S	2	Sch 80	2	60	Primary
X04	Lot 7	S	2	Sch 80	2	60	Primary

\*CONDUIT SUPPLIED BY PSE, INSTALLED BY CUSTOMER

# CONSTRUCTION NOTES

## At 'V1' (266603-188193)

- Install (1) 35kv LB elbow
- Install cable number AEW705

## At 'V2' (266606-188231)

- Install 48" x 48" x 38" minipad handhole
- Install (1) feed through bushing
- Install (2) 35kv LB elbows
- Install cable numbers AEW705 & 706
- Install (1) 3" DB120 90 degree bend for primary
- Install (2) 3" DB120 90 degree bends for services
- Install steel plate cover over access
- Install grid number

## At 'V3' (266639-188221)

- Install 48" x 48" x 38" minipad handhole
- Install (1) feed through bushing
- Install (2) 35kv LB elbows
- Install cable numbers AEW706
- Install (1) 3" DB120 90 degree bend for primary
- Install (2) 3" DB120 90 degree bends for services
- Install steel plate cover over access
- Install grid number

## At 'V4' (266559-188191)

- Install cable number AEW707
- Move cable number ADF189 to 'V6'

## At 'V5' (266549-188228)

- Install 48" x 48" x 38" minipad handhole
- Install (1) feed through bushing
- Install (2) 35kv LB elbows
- Install cable numbers AEW707 & 708
- Install (2) 3" DB120 90 degree bends for services
- Install steel plate cover over access
- Install grid number

## At 'V6' (266571-188287)

- Install 48" x 48" x 38" minipad handhole
- Install (1) feed through bushing
- Install (2) 35kv LB elbows
- Install cable number AEW708
- Install cable number ADF189 (moved from 'V4')
- Install (2) 3" DB120 90 degree bends for services
- Install steel plate cover over access
- Install grid number

## At 'S1' (Customer to expose primary)

- Cut existing 35kv 1/0 primary and install (2) primary splices

## At 'S2' (Customer to expose primary)

- Cut existing 35kv 1/0 primary and install (2) primary splices

## From 'V1' to 'V2' (in customer trench 420')

- Install 450' of 35kv 1/0 solid jacketed concentric neutral cable

## From 'V2' to 'V3' (in customer trench 345')

- Install 305' of 3" DB120 conduit
- Install 350' of 35kv 1/0 solid jacketed concentric neutral cable

## From 'S1' to 'V4' (in customer trench 65')

- Install (2) 35kv 1/0 solid jacketed concentric neutral cable 85' each

## From 'S2' to 'V5' (in customer trench 375')

- Install (2) 35kv 1/0 solid jacketed concentric neutral cable 395' each

## From 'V2' to 'Lot 3 & 4' (in customer trench 5')

- Install (2) 3" conduit 5' and stub up for future service

## From 'V3' to 'Lot 1' (in customer trench 5')

- Install (1) 3" conduit 5' and stub up for future service

## From 'V3' to 'Lot 2' (in customer trench 100')

- Install (1) 3" conduit 5' and stub up for future service

## From 'V5' to 'Lot 3 & 5' (in customer trench 5')

- Install (2) 3" conduit 5' and stub up for future service

## From 'V6' to 'Lot 6 & 7' (in customer trench 5')

- Install (2) 3" conduit 5' and stub up for future service

EGRESS  
SMT. "R"  
LOTS 6 & 7



**PUGET  
SOUND  
ENERGY**

DESIGNED BY POTELCO, INC.

**MISTY MOUNTAIN \* SEVEN LOT LLP**

35kv \* (3) UG line ext to serve seven lots (1+ acre each)

Lot 4, Tillman Creek \* Cle Elum, WA 98922

INCIDENT N/A	MAOP N/A
Gas Order N/A	Elect Order 105045292
SCALE 1" = 200'	PAGE 2 of 3