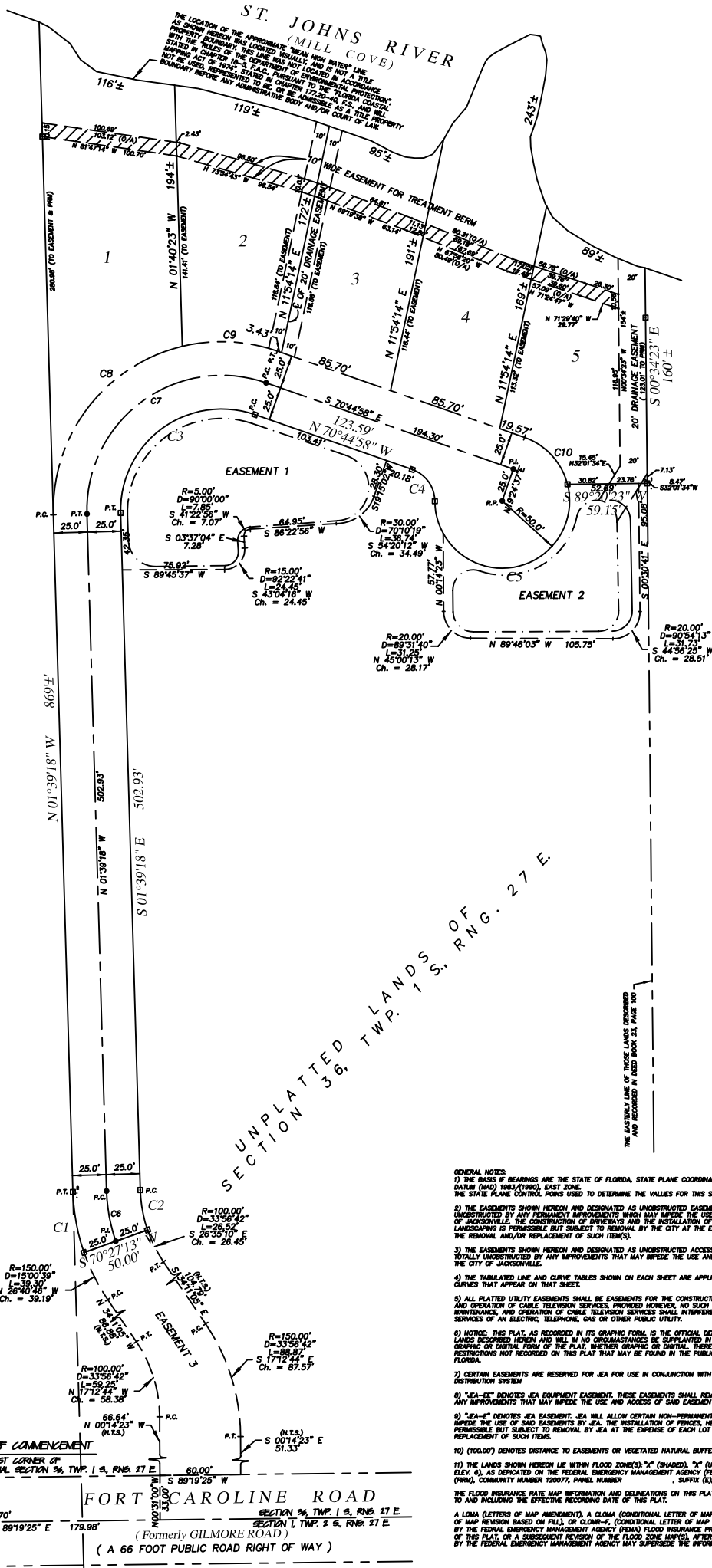


LEGEND AND ABBREVIATIONS:

ESMT	EASEMENT
O.R.V.	OFFICIAL RECORDS VOLUME
O.R.B.	OFFICIAL RECORDS BOOK
P.G.	PAGE
(G.A.)	GENERAL AVERAGE
R	RADIUS
R.A.	NON RADIAL
P.C.	POINT OF CURVATURE
P.T.	POINT OF TANGENCY
P.I.	POINT OF INTERSECTION
P.C.C.	POINT OF COMPOUND CURVATURE
N	NORTHING
E	EASTING
R	RADIUS
L	ARC LENGTH
CH	CHORD
CH	TABULATED CURVE DATA
L	TABULATED LINE TABLE
V.A.R.	VEGETATED NATURAL BUFFER
R/W	RIGHT OF WAY
	FOUND IRON PIPE OR ROD (AS NOTED)
	DENOTES PERMANENT REFERENCE
	MONUMENT (AS NOTED)
	DENOTES PERMANENT CONTROL
P.T.	POINT, SET L.S. No. 681
S.W.M.F.	STORMWATER MANAGEMENT FACILITY
S.W.M.D.	ST. JOHNS RIVER WATER MANAGEMENT DISTRICT
U.S.A. C.O.E.	UNITED STATES ARMY CORP. OF ENGINEERS



Prepared By:
A & J LAND SURVEYORS, INC.
5847 Luella Street
Jacksonville, Florida 32207
Office : (904) 346-1733
Fax : (904) 346-1736

GENERAL NOTES:
1) THE BASIS OF BEARINGS ARE THE STATE OF FLORIDA, STATE PLANE COORDINATE SYSTEM, NORTH AMERICAN DATUM (NAD) 1983 (TIGRIS), EAST ZONE.
THE STATE PLANE CONTROL POINTS USED TO DETERMINE THE VALUES FOR THIS SITE ARE :
2) THE EASEMENTS SHOWN HEREIN AND DESIGNATED AS UNOCCUPIED EASEMENTS SHALL REMAIN TOTALLY UNOCCUPIED BY ANY PERMANENT IMPROVEMENTS WHICH MAY IMPOSE THE USE OF SAID EASEMENT BY THE CITY OF JACKSONVILLE. THE CONSTRUCTION OF DRIVEWAYS AND THE INSTALLATION OF FENCES, HEDGES AND LANDSCAPING IS PERMISSIBLE BUT SUBJECT TO REMOVAL BY THE CITY AT THE EXPENSE OF EACH LOT OWNER FOR THE REMOVAL AND/OR REPLACEMENT OF SUCH ITEMS.
3) THE EASEMENTS SHOWN HEREIN AND DESIGNATED AS UNOCCUPIED ACCESS EASEMENTS SHALL REMAIN TOTALLY UNOCCUPIED BY ANY IMPROVEMENTS THAT MAY IMPOSE THE USE AND ACCESS OF SAID EASEMENT BY THE CITY OF JACKSONVILLE.
4) THE TABULATED LINE AND CURVE TABLES SHOWN ON EACH SHEET ARE APPLICABLE ONLY TO THE LINE AND CURVES THAT APPEAR ON THAT SHEET.
5) ALL PLATTED UTILITY EASEMENTS SHALL BE EASEMENTS FOR THE CONSTRUCTION, INSTALLATION, MAINTENANCE, AND OPERATION OF CABLE TELEVISION SERVICES, PROVIDED HOWEVER, NO SUCH CONSTRUCTION, INSTALLATION, MAINTENANCE, AND OPERATION OF CABLE TELEVISION SERVICES SHALL INTERFERE WITH THE FACILITIES AND SERVICES OF AN ELECTRIC, TELEPHONE, GAS OR OTHER PUBLIC UTILITY.
6) NOTICE: THIS PLAT, AS RECORDED IN ITS GRAPHIC FORM, IS THE OFFICIAL DEPICTION OF THE SUBDIVIDED LANDS DESCRIBED HEREIN AND WILL IN NO CIRCUMSTANCES BE SUPPLANTED IN AUTHORITY BY ANY OTHER GRAPHIC OR DIGITAL FORM OF THE PLAT, WHETHER GRAPHIC OR DIGITAL, THERE MAY BE ADDITIONAL RESTRICTIONS NOT RECORDED ON THIS PLAT THAT MAY BE FOUND IN THE PUBLIC RECORDS OF DUVAL COUNTY, FLORIDA.
7) CERTAIN EASEMENTS ARE RESERVED FOR JEA FOR USE IN CONJUNCTION WITH THE UNDERGROUND ELECTRICAL DISTRIBUTION SYSTEM.
8) "E-A-E" DENOTES JEA EQUIPMENT EASEMENT. THESE EASEMENTS SHALL REMAIN TOTALLY UNOCCUPIED BY ANY IMPROVEMENTS THAT MAY IMPOSE THE USE AND ACCESS OF SAID EASEMENT BY JEA.
9) "E-A" DENOTES JEA EASEMENT. JEA WILL ALLOW CERTAIN NON-PERMANENT IMPROVEMENTS WHICH DO NOT IMPOSE THE USE OF SAID EASEMENTS BY JEA. THE INSTALLATION OF FENCES, HEDGES, AND LANDSCAPING IS PERMISSIBLE BUT SUBJECT TO REMOVAL BY JEA AT THE EXPENSE OF EACH LOT OWNER FOR THE REMOVAL AND REPLACEMENT OF SUCH ITEMS.
10) (100.00') DENOTES DISTANCE TO EASEMENTS OR VEGETATED NATURAL BUFFERS.
11) THE LANDS SHOWN HEREIN LIE WITHIN FLOOD ZONE(S): "X" (SHADED), "Y" (UNSHADED), "AE" (BASE FLOOD ELEV. 8.0, AS DEPICTED ON THE FEDERAL EMERGENCY MANAGEMENT AGENCY (FEMA) FLOOD INSURANCE RATE MAP (FIRM), COMMUNITY NUMBER 120077, PANEL NUMBER 1. SUFFIX (C), DATED AUGUST 15, 1998.
THE FLOOD INSURANCE RATE MAP INFORMATION AND DELINEATIONS ON THIS PLAT ARE VALID ONLY FOR DATE UP TO AND INCLUDING THE EFFECTIVE RECORDING DATE OF THIS PLAT.
A LOMA (LETTERS OF MAP AMENDMENT), A LOMA (CONDITIONAL LETTER OF MAP AMENDMENT), LOMA-F (LETTER OF MAP REVISION BASED ON FILL), OR CLOM-F (CONDITIONAL LETTER OF MAP REVISION BASED ON FILL) ISSUED BY THE FEDERAL EMERGENCY MANAGEMENT AGENCY (FEMA) FLOOD INSURANCE PROGRAM, AFTER THE RECORDATION OF THIS PLAT, ON A SUBSEQUENT REVISION OF THE FLOOD ZONE MAP(S), AFTER THE RECORDATION OF THIS PLAT, BY THE FEDERAL EMERGENCY MANAGEMENT AGENCY MAY SUPERSEDE THE INFORMATION ON THE RECORDED PLAT.