

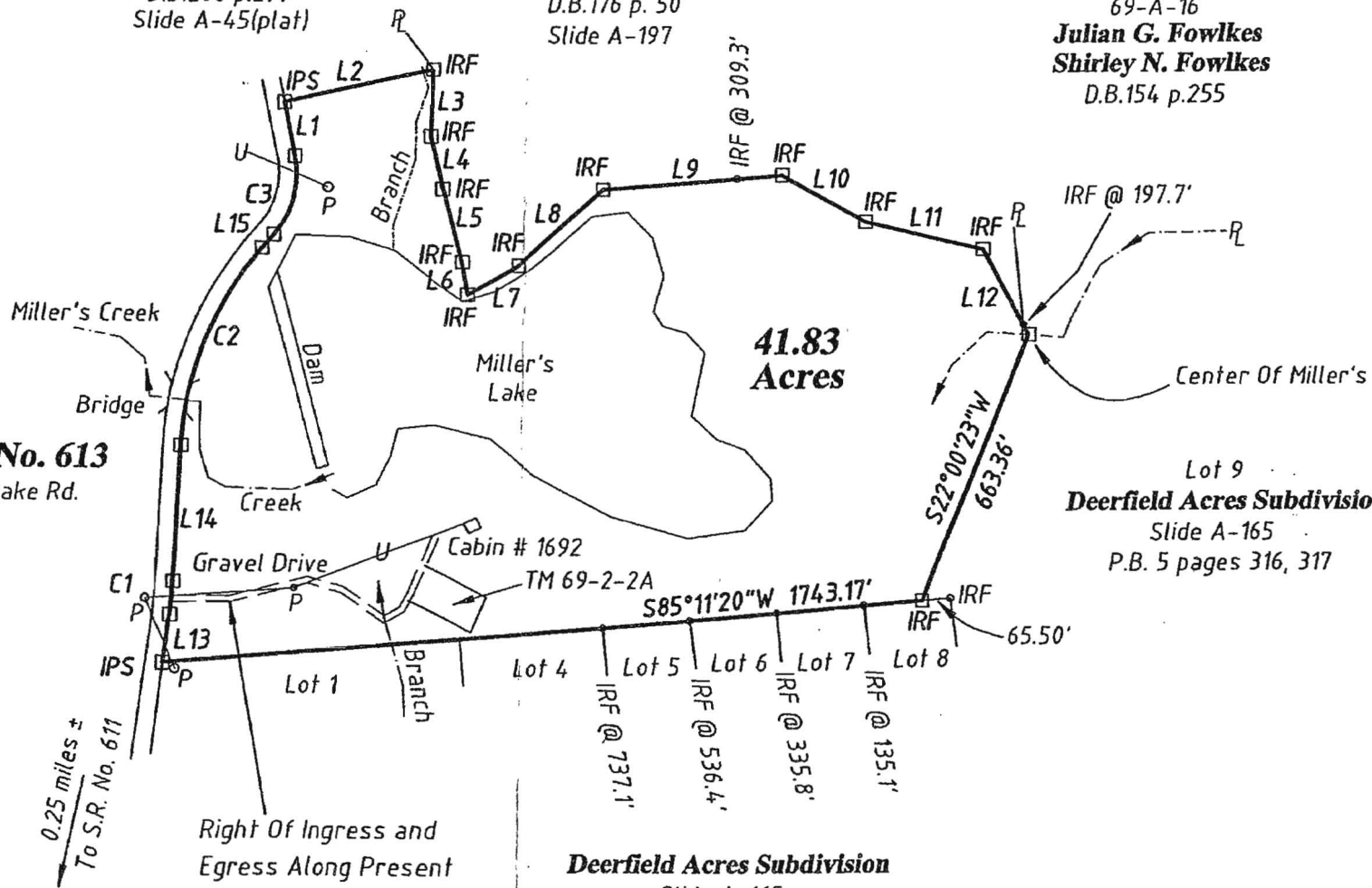
76.73'
134.35'
264.23'
415.70'
219.06'
276.71'
223.70'
111.78'
315.07'
41.00'

**1 neouore Anderson -  
Marjorie Anderson**  
D.B.208 p.299  
Slide A-45(plat)

**Julian G. Fowlkes  
Shirley N. Fowlkes**  
D.B.176 p. 50  
Slide A-197

69-A-16  
**Julian G. Fowlkes  
Shirley N. Fowlkes**  
D.B.154 p.255

**Legend**  
IPS = Iron Pipe Set  
IRF = Iron Rod Found  
P = Pole  
U = Overhead Utility

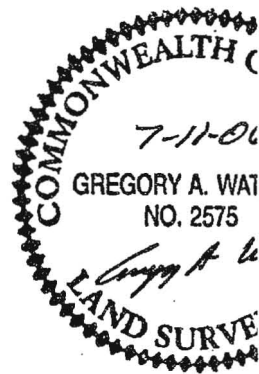


**State Route No. 613**  
40' R/W Miller Lake Rd.

**41.83  
Acres**

Lot 9  
**Deerfield Acres Subdivision**  
Slide A-165  
P.B. 5 pages 316, 317

**Deerfield Acres Subdivision**  
Slide A-165  
P.B. 5 pages 316, 317



**Boundary Plat  
Of Existing Parcels**  
Being The Properties Owned By  
**Mary Ann Carlson**  
Deed Book 238 page 582  
Lockett District, Prince Edward Cou.  
7-11-06 06109

urvey.  
t of  
a title

0.25 miles ±  
To S.R. No. 611

Right Of Ingress and  
Egress Along Present  
Roadway.  
D.B.121 p.48

100'