







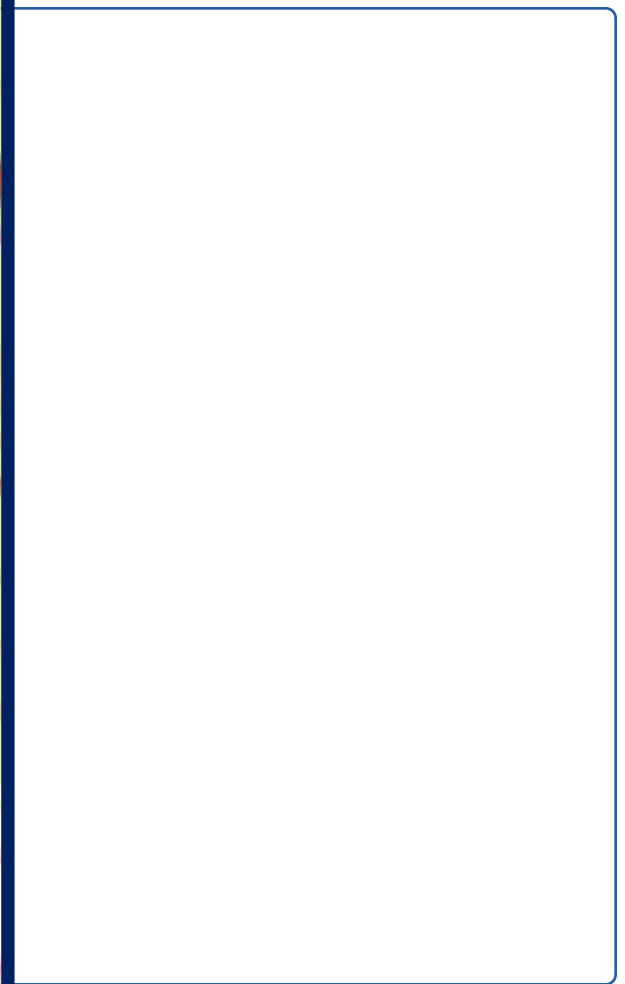
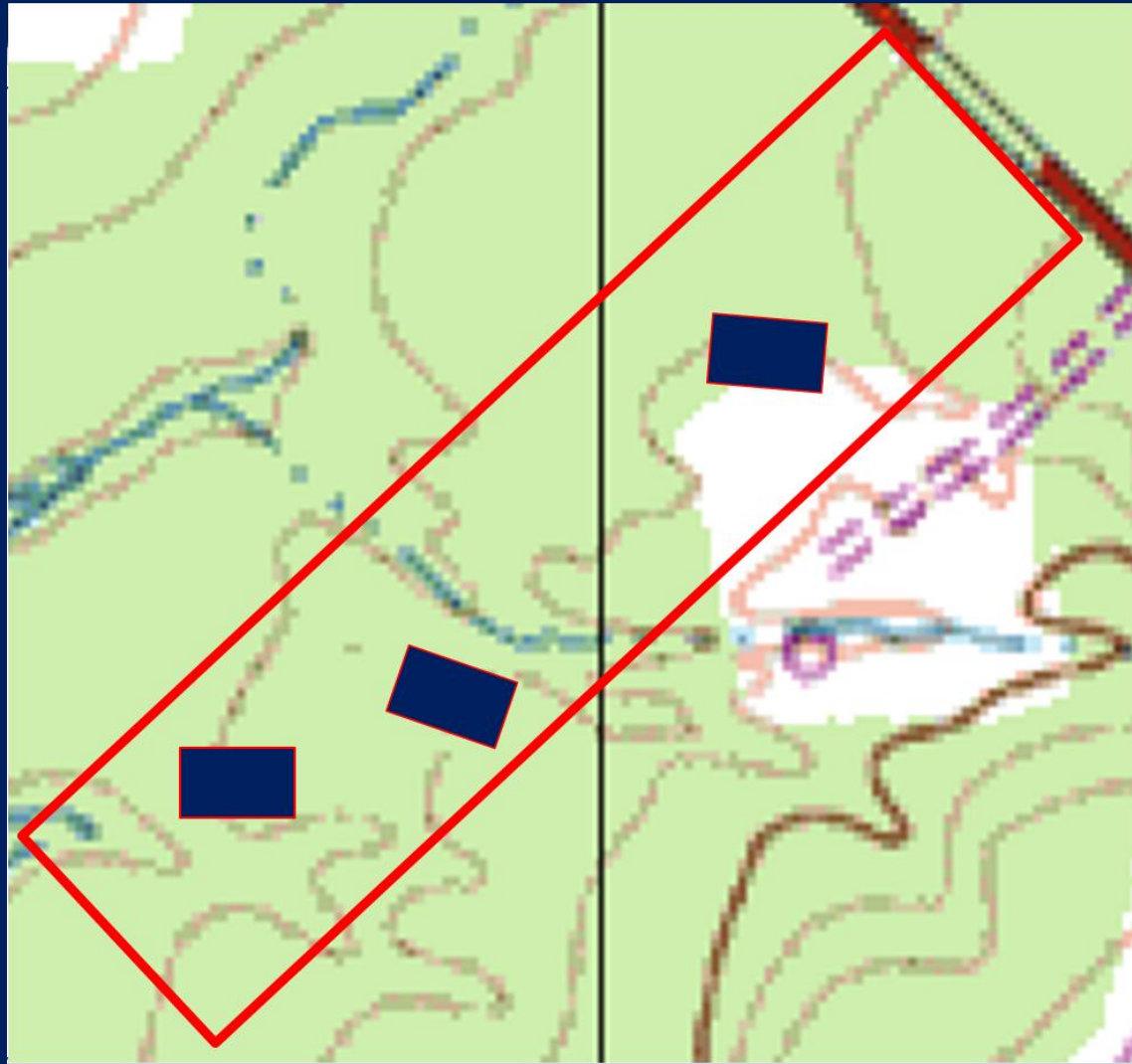




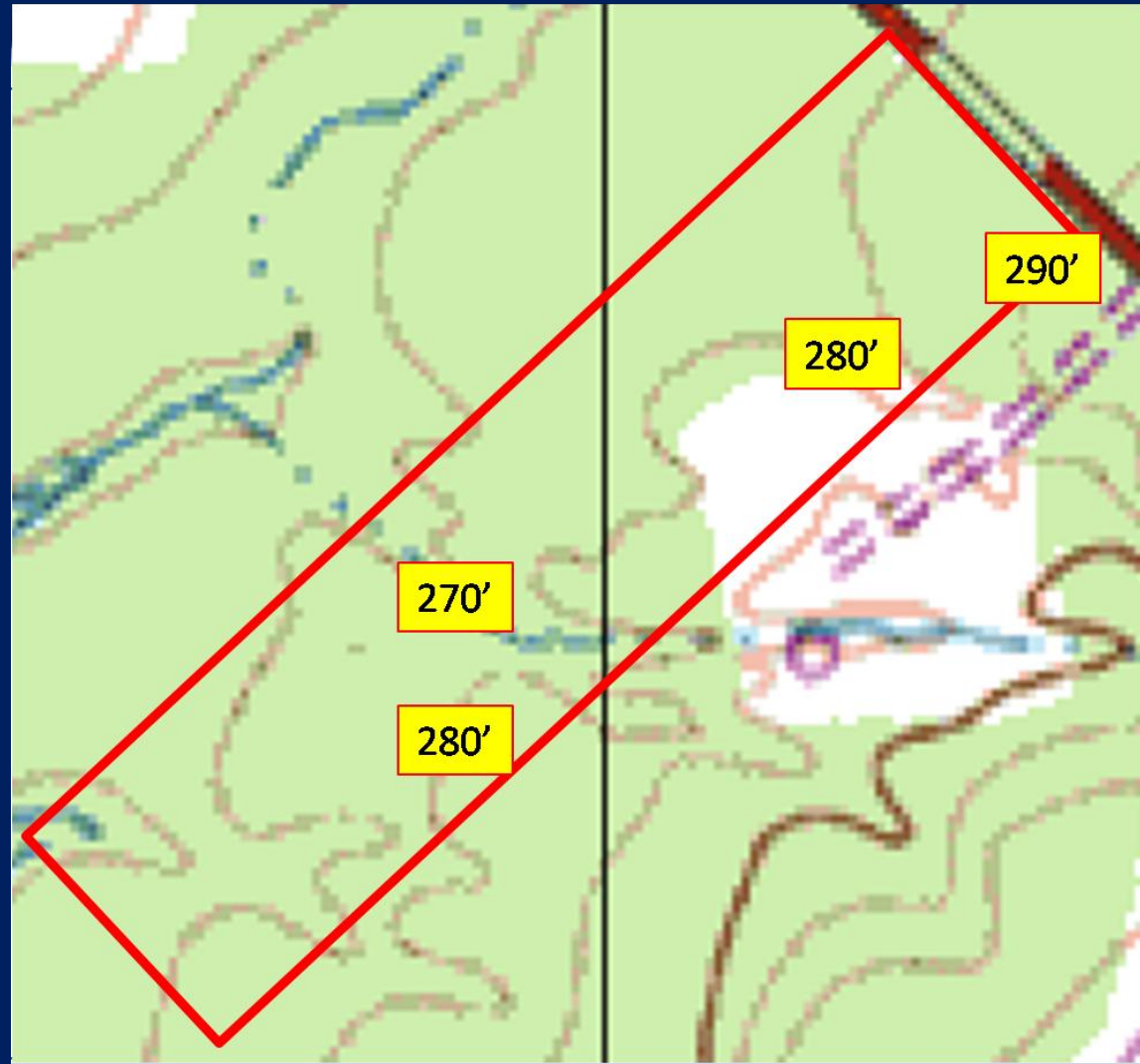




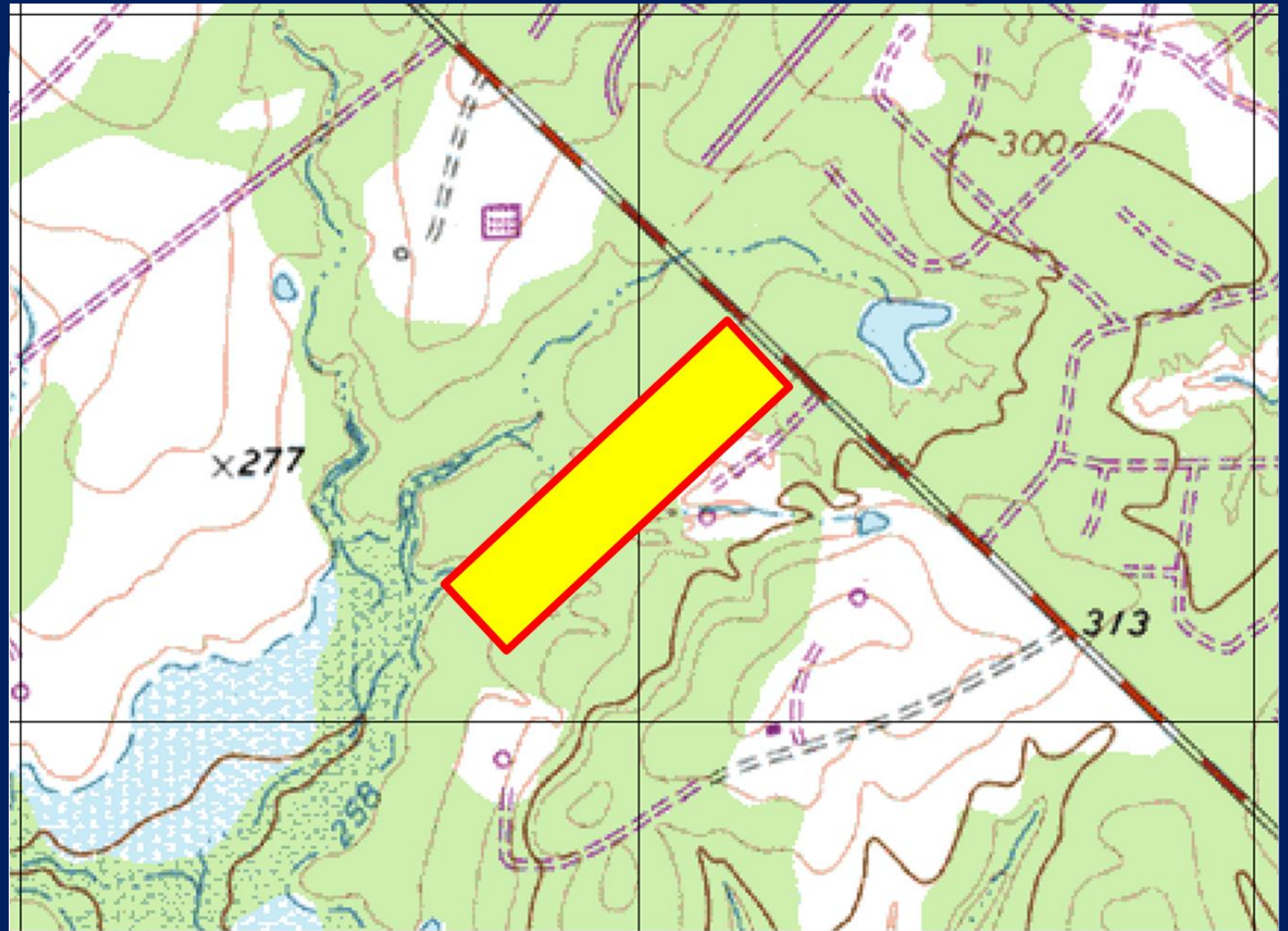
Topographic map with 3 home site examples



Topographic map with elevation highlights



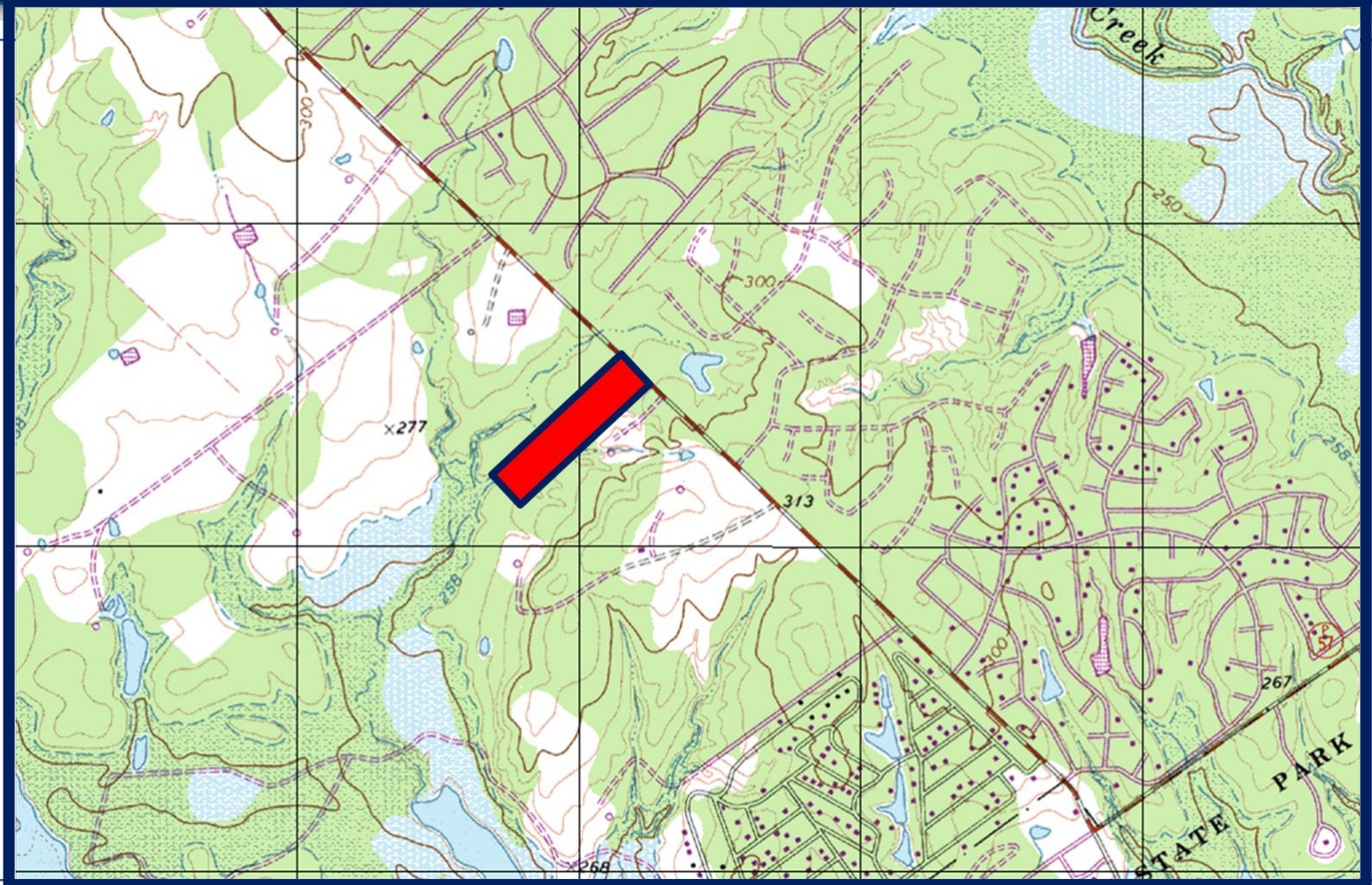
Topographic map immediate area shaded



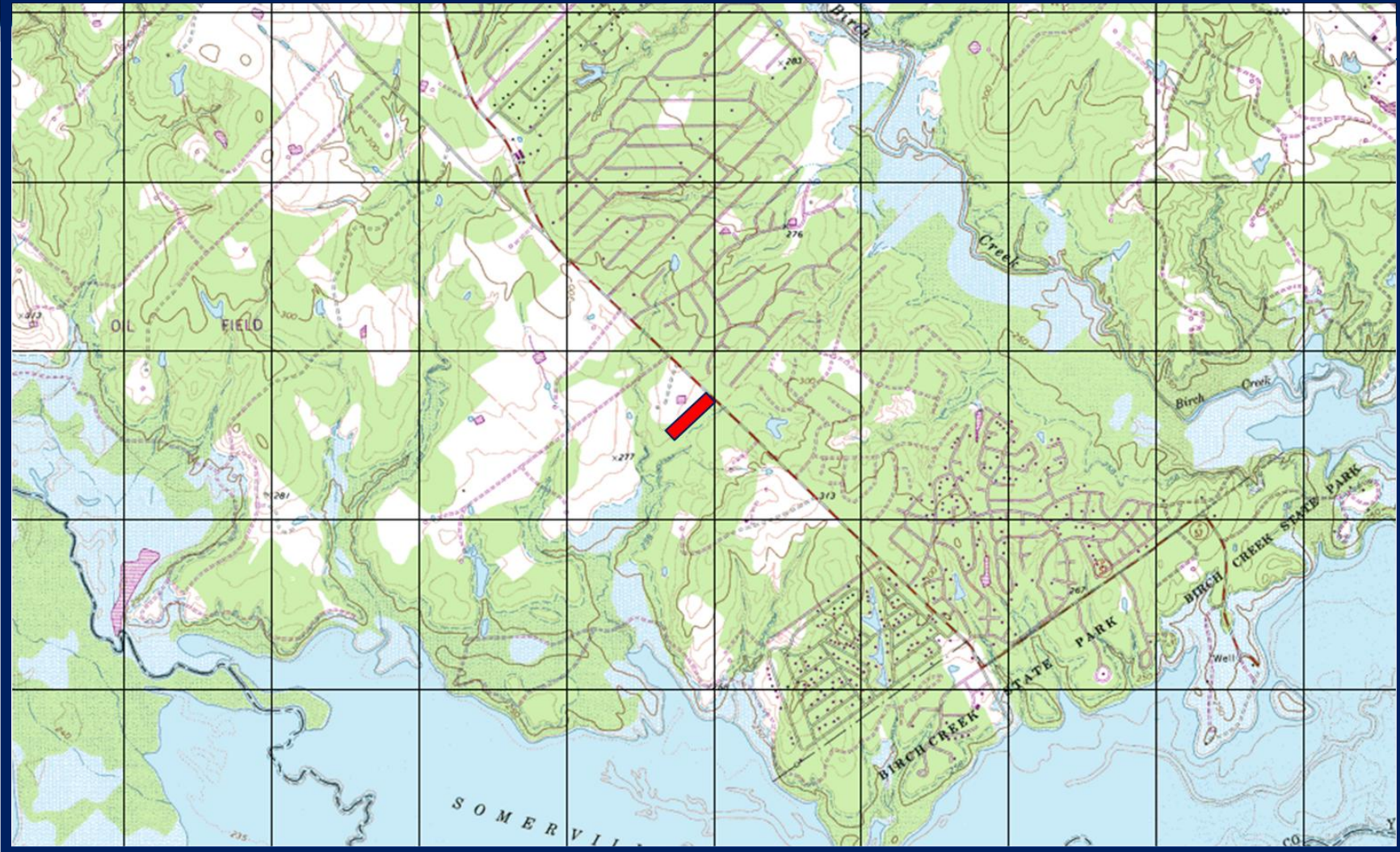
Topographic map immediate area shaded



Topographic map surrounding area



Topographic map greater market area



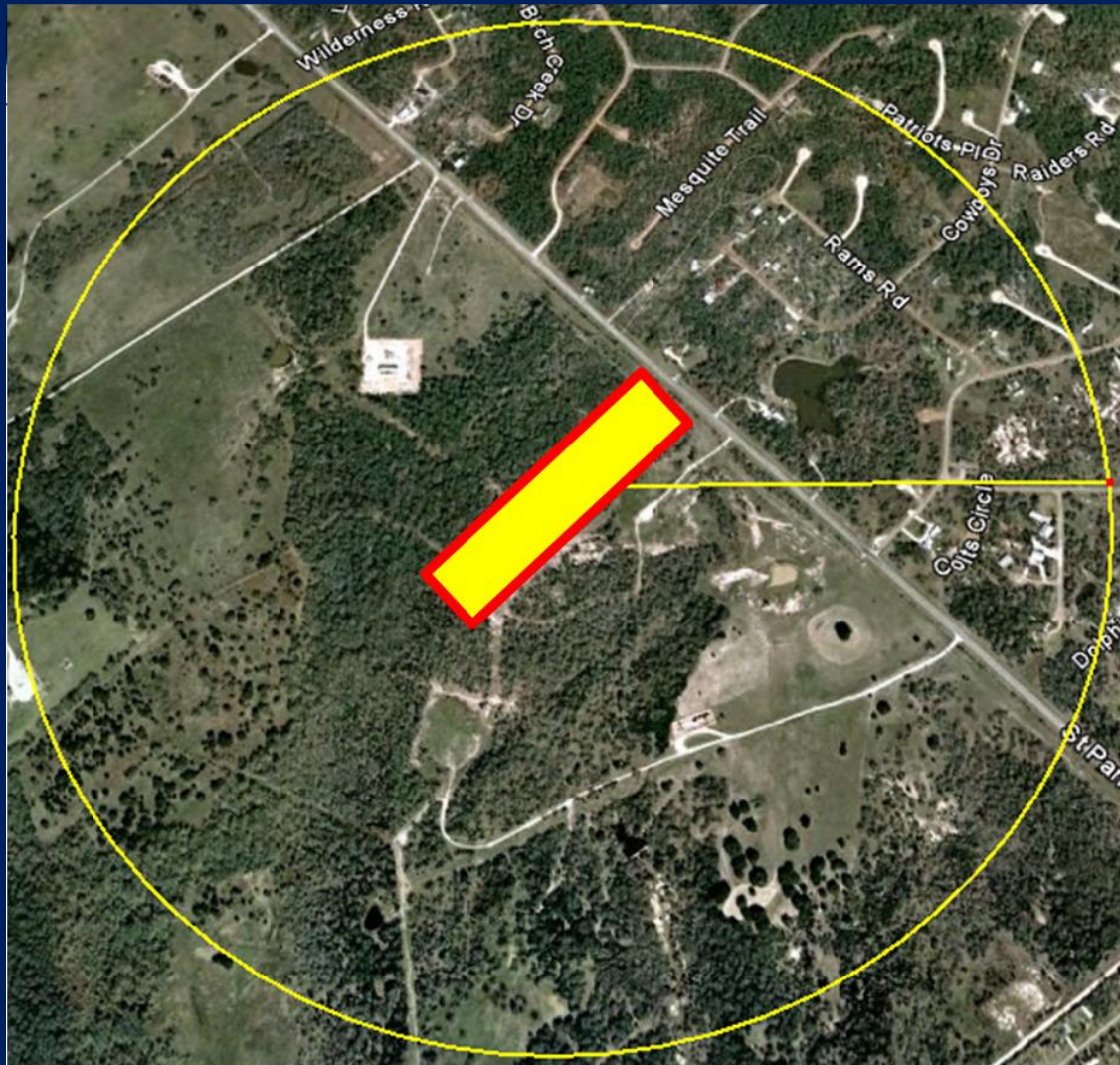
Satellite map close up



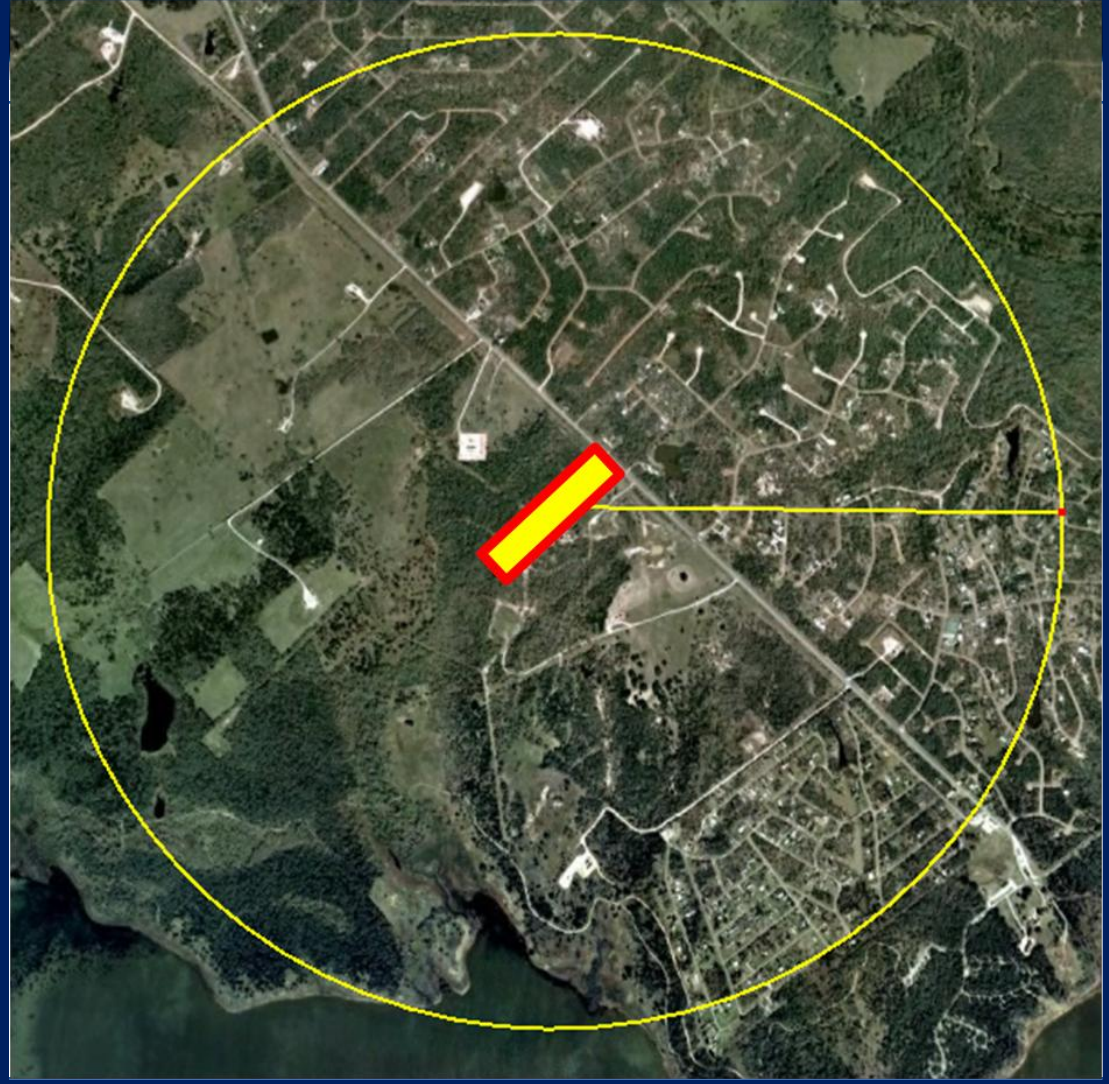
Satellite map 1/2-mile radius property outline



Satellite map 1/2-mile radius property shaded



Satellite map 1-mile radius



Satellite map 2-mile radius

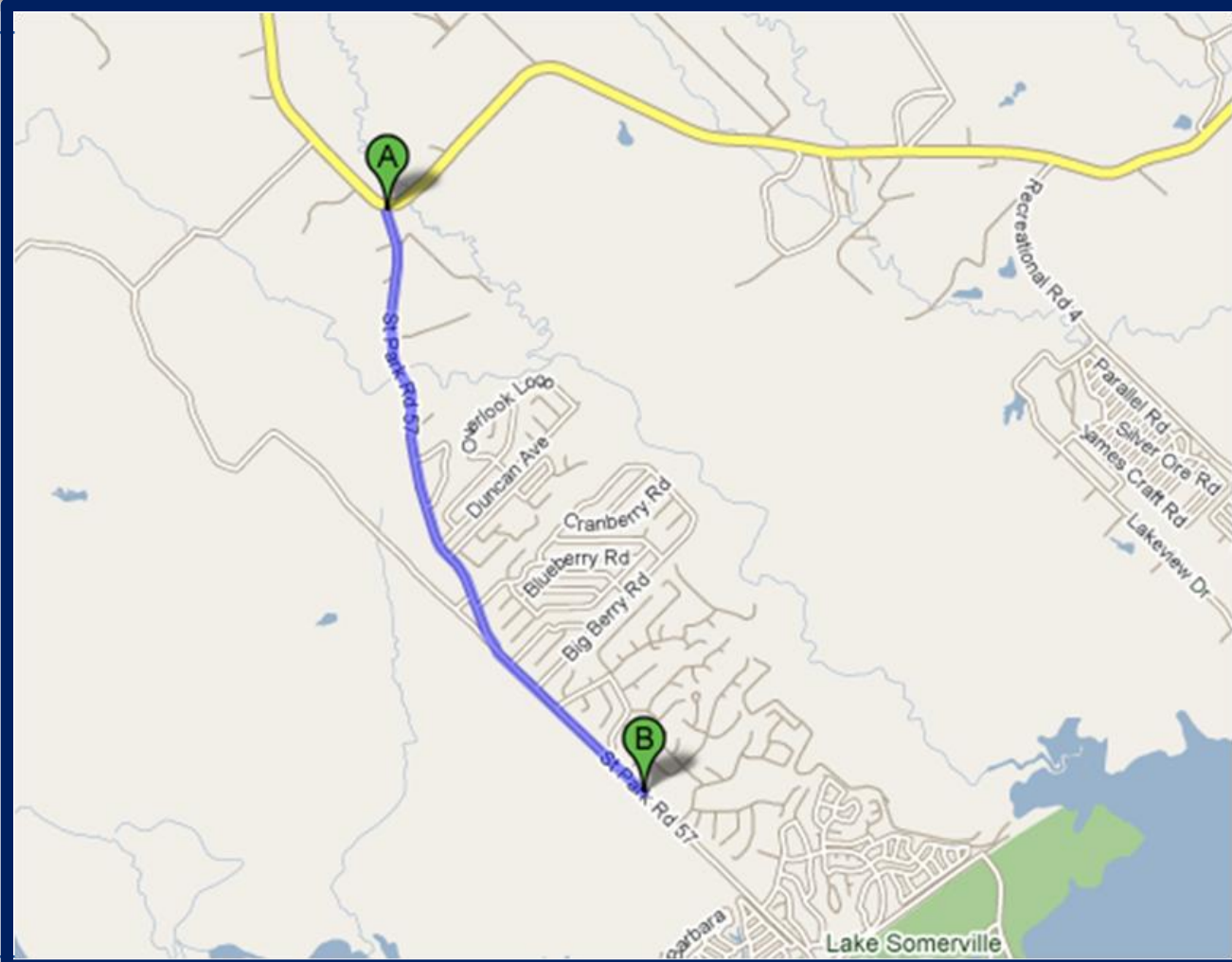


Satellite map 3-mile radius

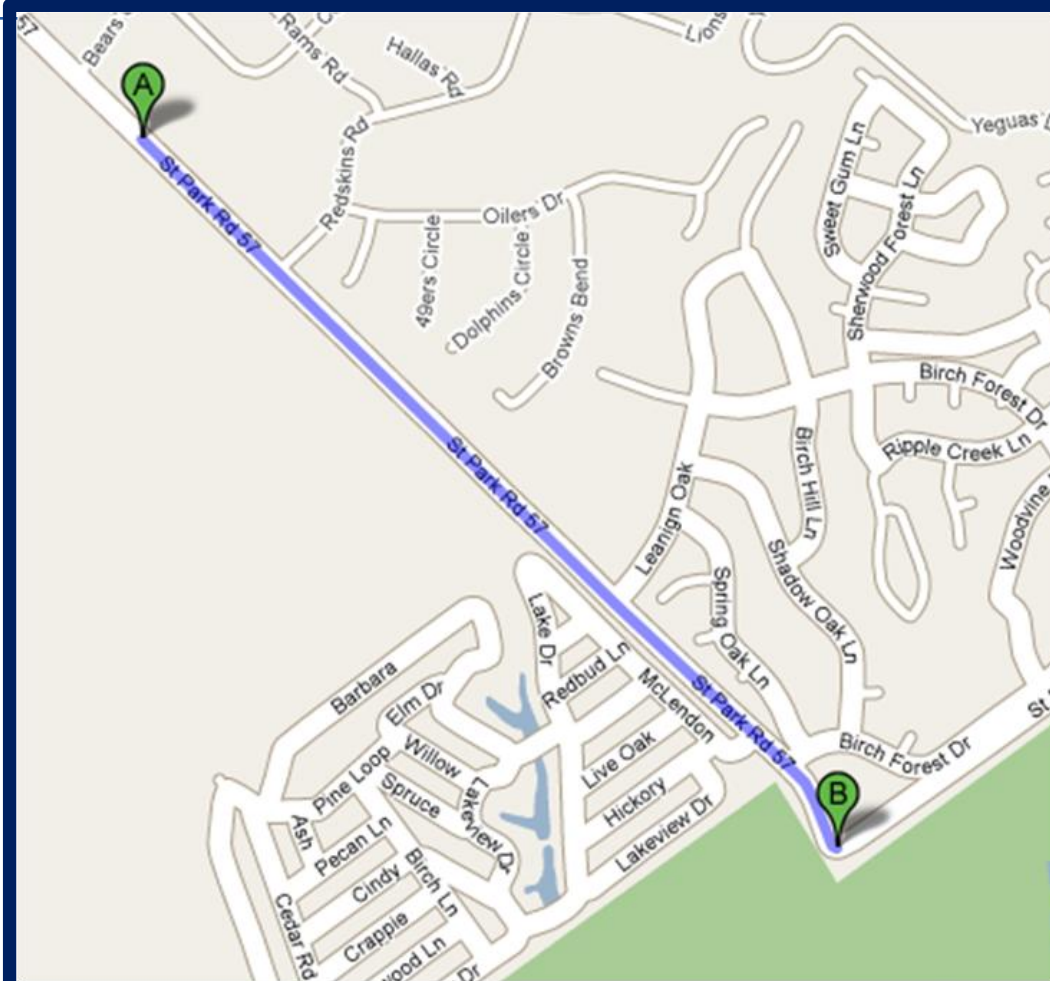


[illegible]

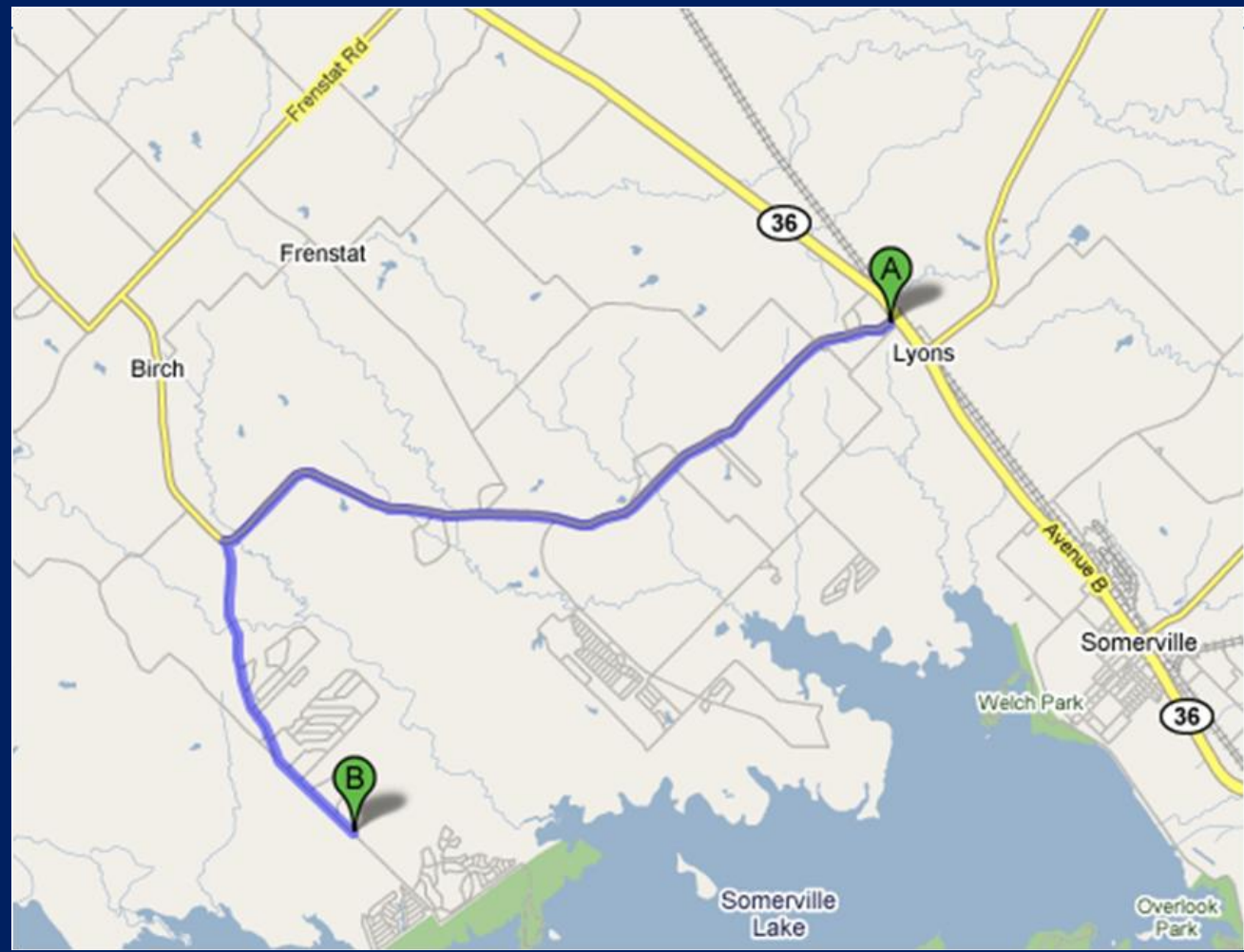
Google map from final turn from FM 60 Road to Texas Park Road 57 for 3 miles and 6 minutes



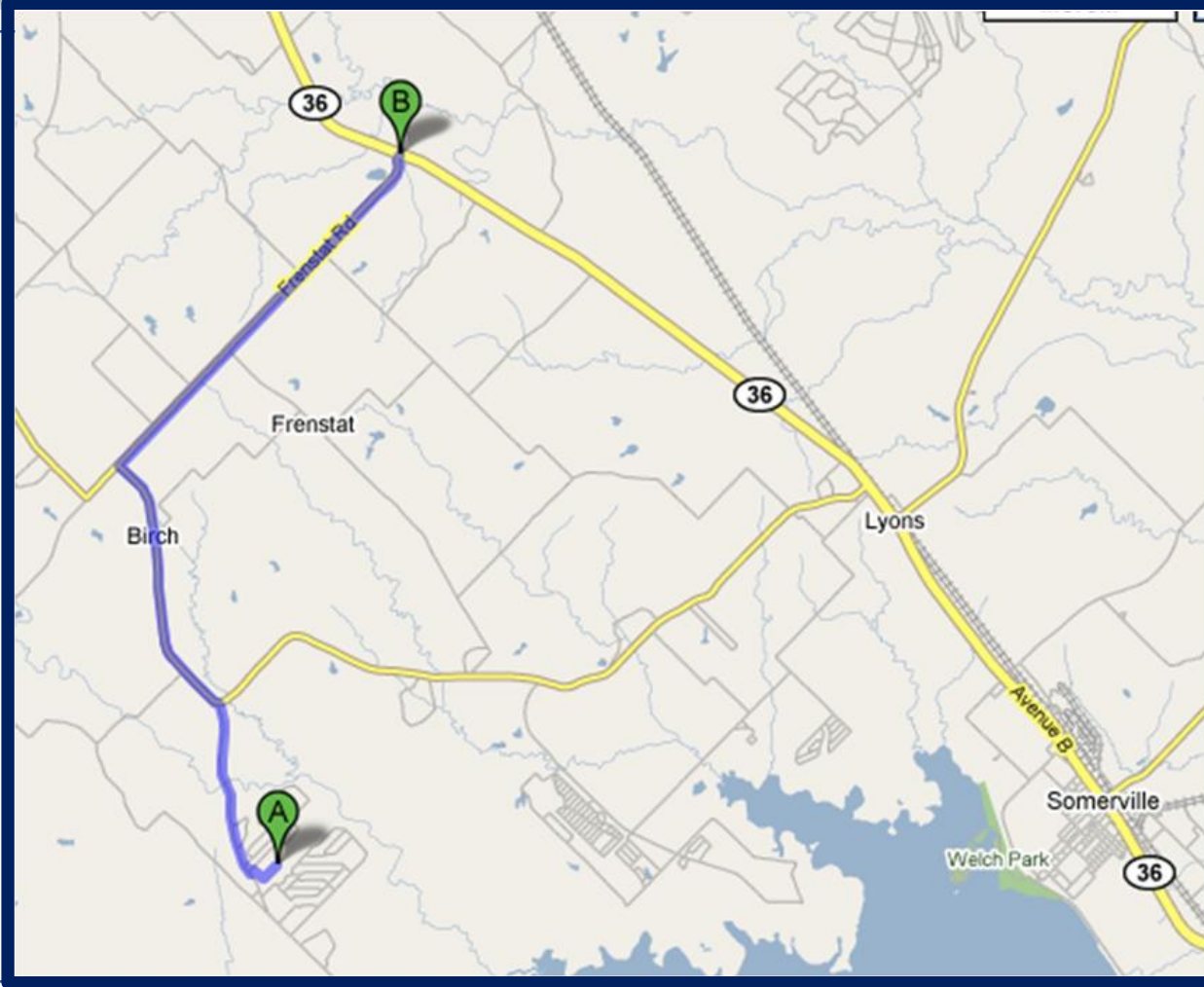
Google map to Lake Somerville State Park from property 1.1 miles & 2 minutes



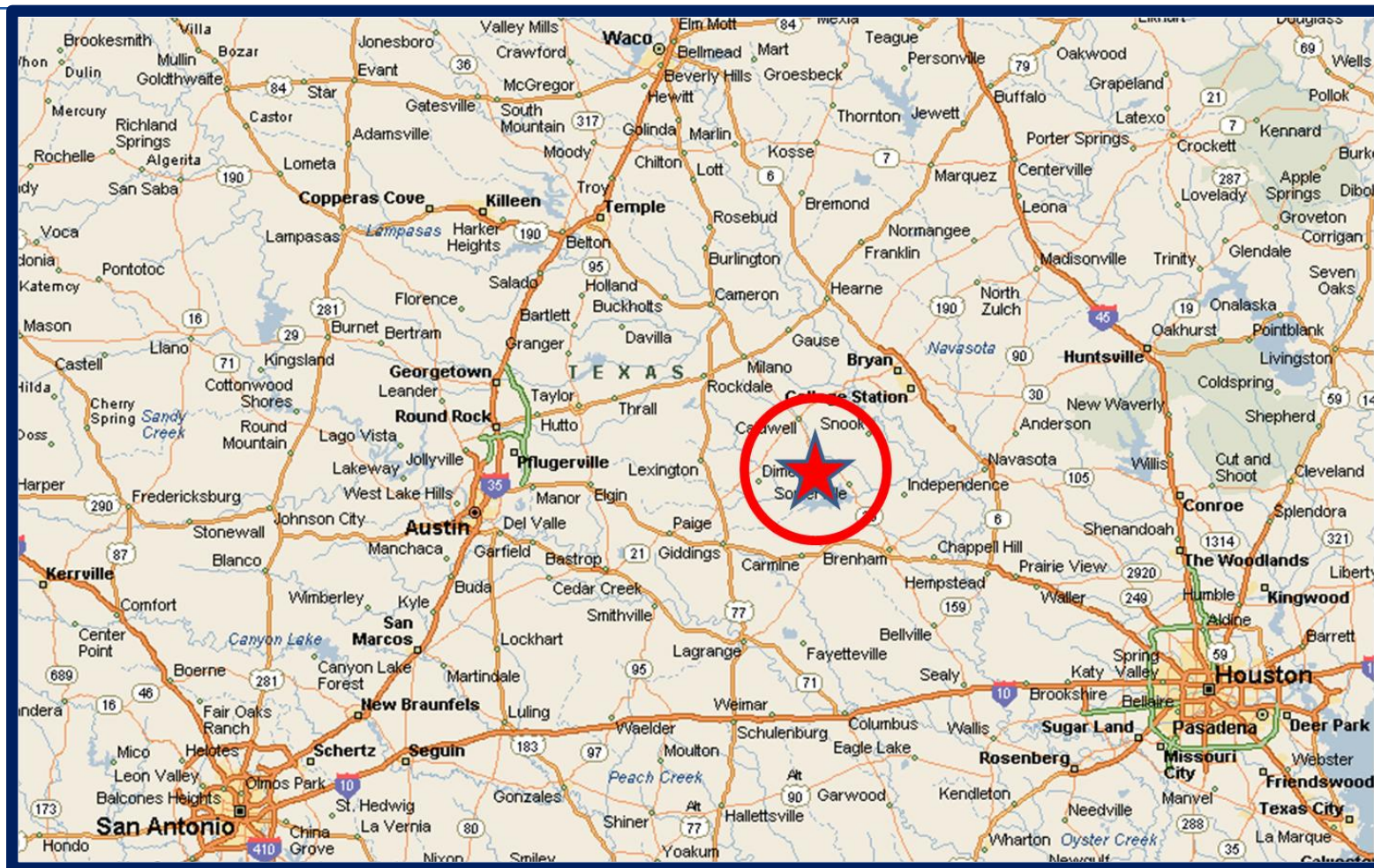
Google map from turn-off from north-bound on TX 36 at FM 60 Road turn, it is 10 miles & 17 minutes



Google map from turn-off from south-bound on TX 36 at FM 976/Frenstat Road turn, it is 9.4 miles & 17 minutes



Regional map



US, Texas and County



Wikipedia maps

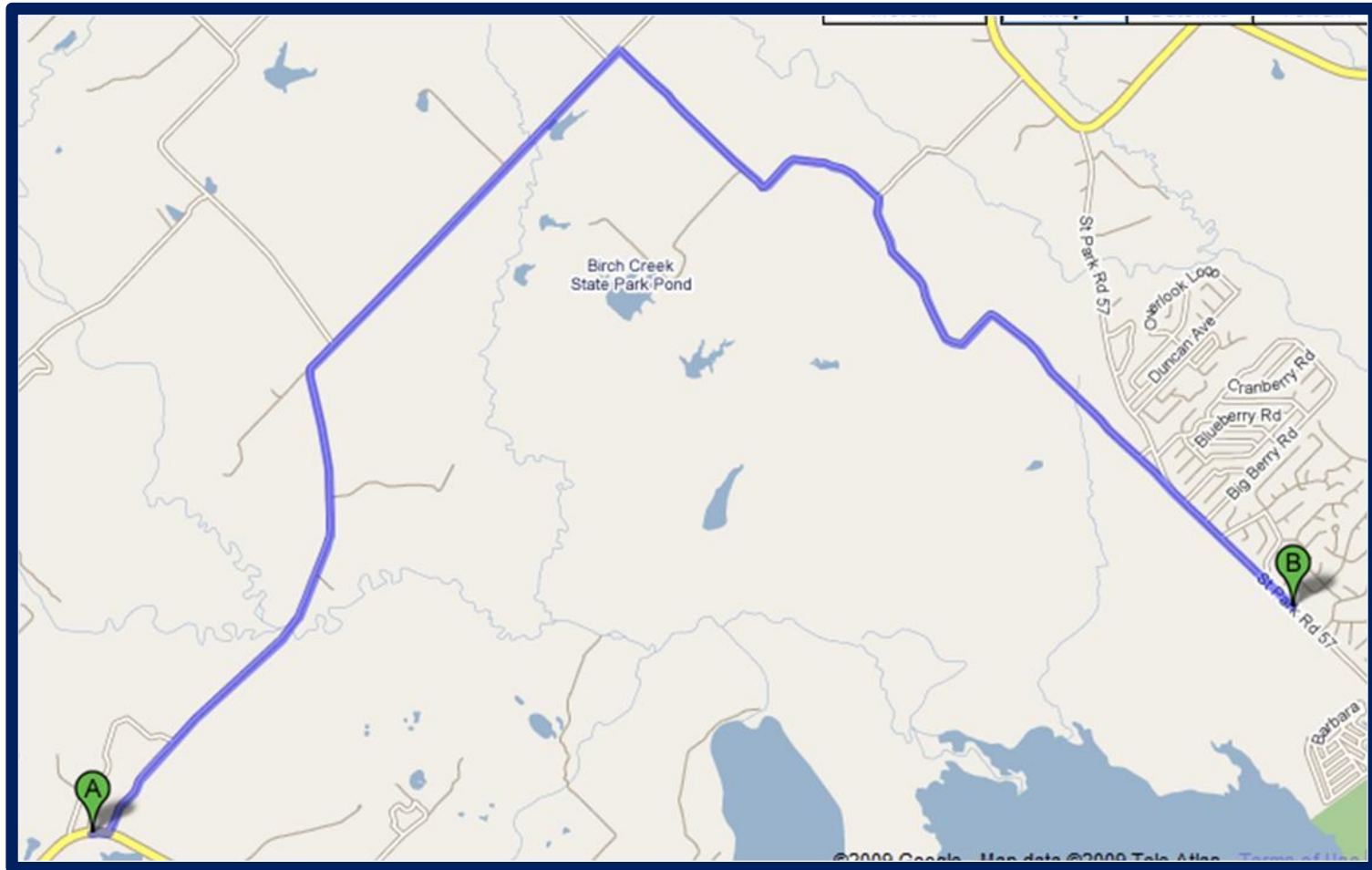


SOUTHWEST PARTNERS

Google map from Austin (I 35 and US 290) 80.9 miles & 96 minutes



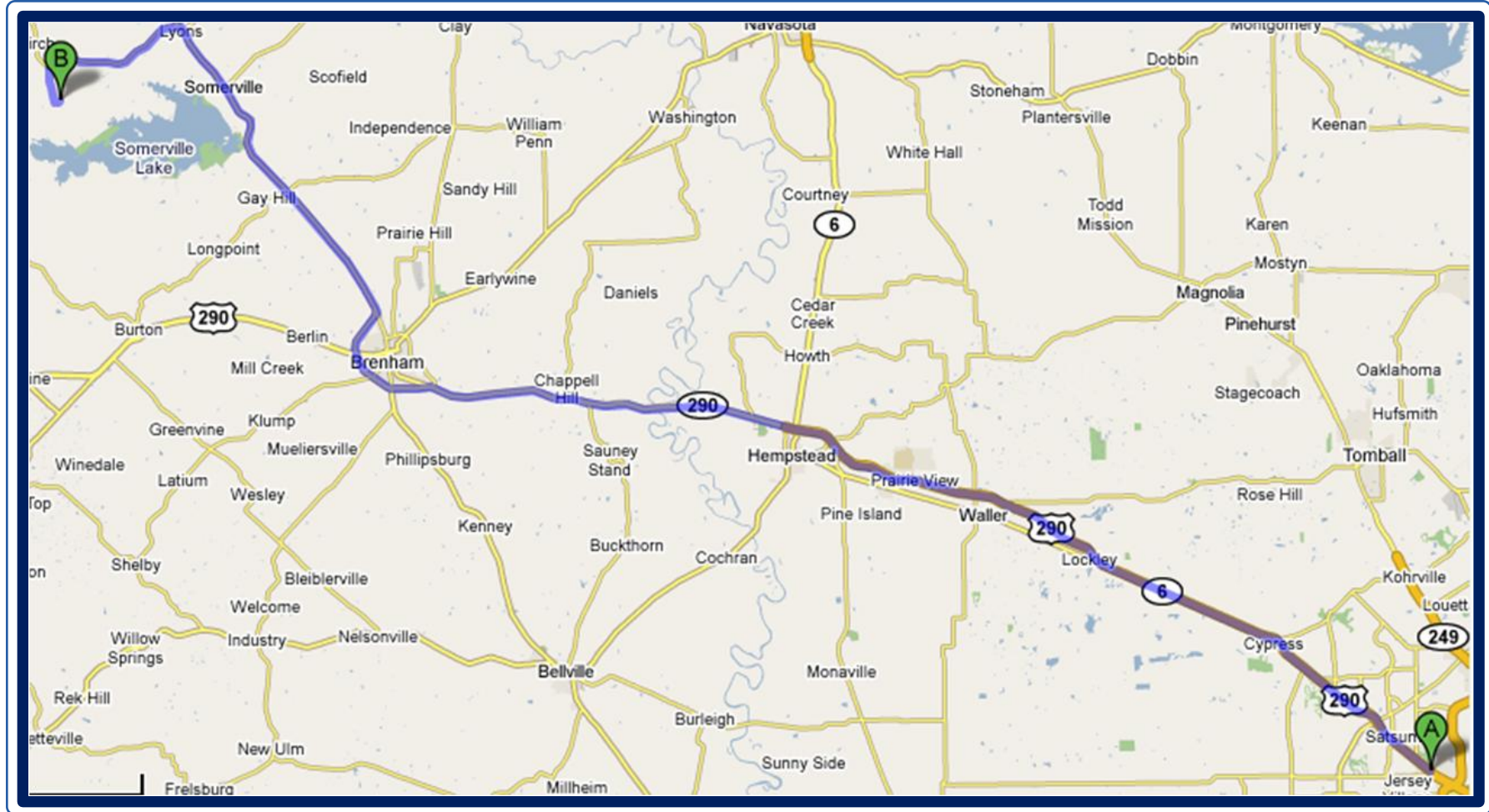
Google map from FM 1697 Road & CR 124 (from Austin) 11 miles & 17 minutes



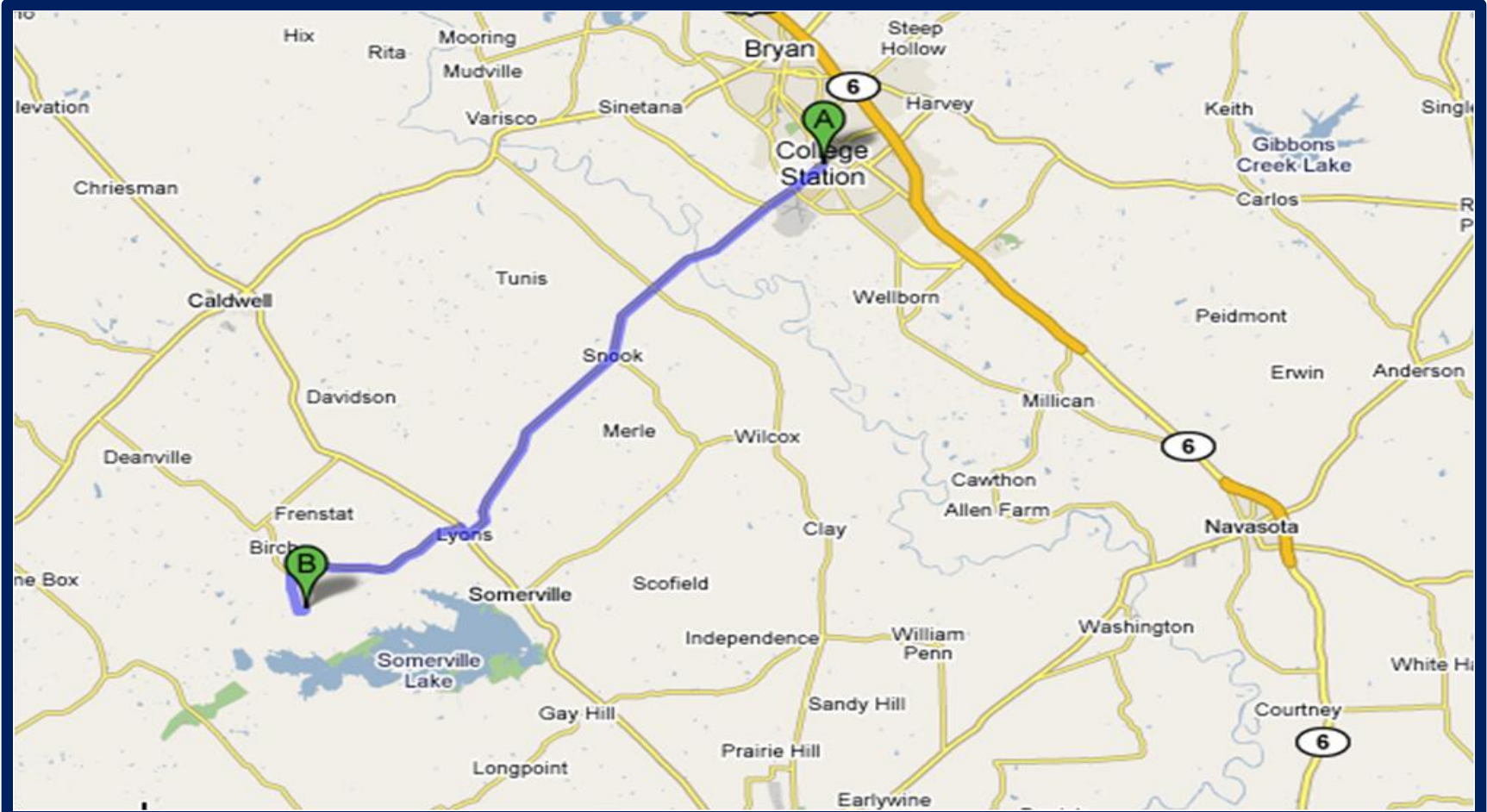
Austin-Waco area driving times & distances

#	Location	Driving	
		Miles	Minutes
1	Caldwell	18.4	27.5
2	Round Top	34.6	56.0
3	Bastrop	50.9	70.3
4	Schulenberg (I 10 east from San Antonio)	62.7	77.8
5	Austin	80.9	97.3
6	Austin Bergstrom International (AUS)	83.8	98.0
7	Round Rock	85.9	94.3
8	Georgetown	94.8	103.0
9	Temple	79.3	92.8
10	San Marcos	111.0	117.5
11	Waco (ACT)	99.0	108.5
12	Killeen	101.0	109.8

Google map from NW Houston (Beltway & US 290)
86.3 miles & 85 minutes



Google map from College Station 31.8 miles & about 51 minutes



Houston-College Station area driving times & distances

#	Location	Driving	
		Miles	Minutes
1	Somerville	13.8	21.5
2	Brenham	29.4	42.5
3	College Station (CLL)	31.8	50.8
4	Sealy	62.6	81.5
5	NW Houston (Beltway @ US 290)	86.3	85.3
6	Katy	84.6	102.5
7	Downtown Houston	105.0	101.8
8	Bellaire	106.0	102.8
9	Sugar Land	108.0	103.3
10	Houston Intercontinental (IAH)	109.0	106.3
11	Houston Hobby (HOU)	114.0	111.5
12	Pearland	122.0	117.5