

115.585 ACRES +/- SUSSEX COUNTY, VIRGINIA

ASKING PRICE - \$227,000



REPRESENTED BY:

G. EDMOND MASSIE, IV
ALC, CCIM, MBA

WILLIAM G. GRANT
ALC, VLS

JEFFREY S. HUFF
REALTOR®, FORESTER

TABLE OF CONTENTS

- I. PROPERTY DESCRIPTION
- II. PHOTOGRAPHS
- III. AERIAL PHOTO
- IV. TOPOGRAPHIC MAP
- V. LOCATION MAP
- VI. FLYER

PROPERTY DESCRIPTION

The subject property is shown on Sussex County Tax Map records as parcel number 28-A-1A. According to the tax records the property contains 115.585 acres. A review of the Sussex County Tax Records indicates the following:

<u>Tax Map Number</u>	<u>Acreage</u>
28-A-1A	115.585

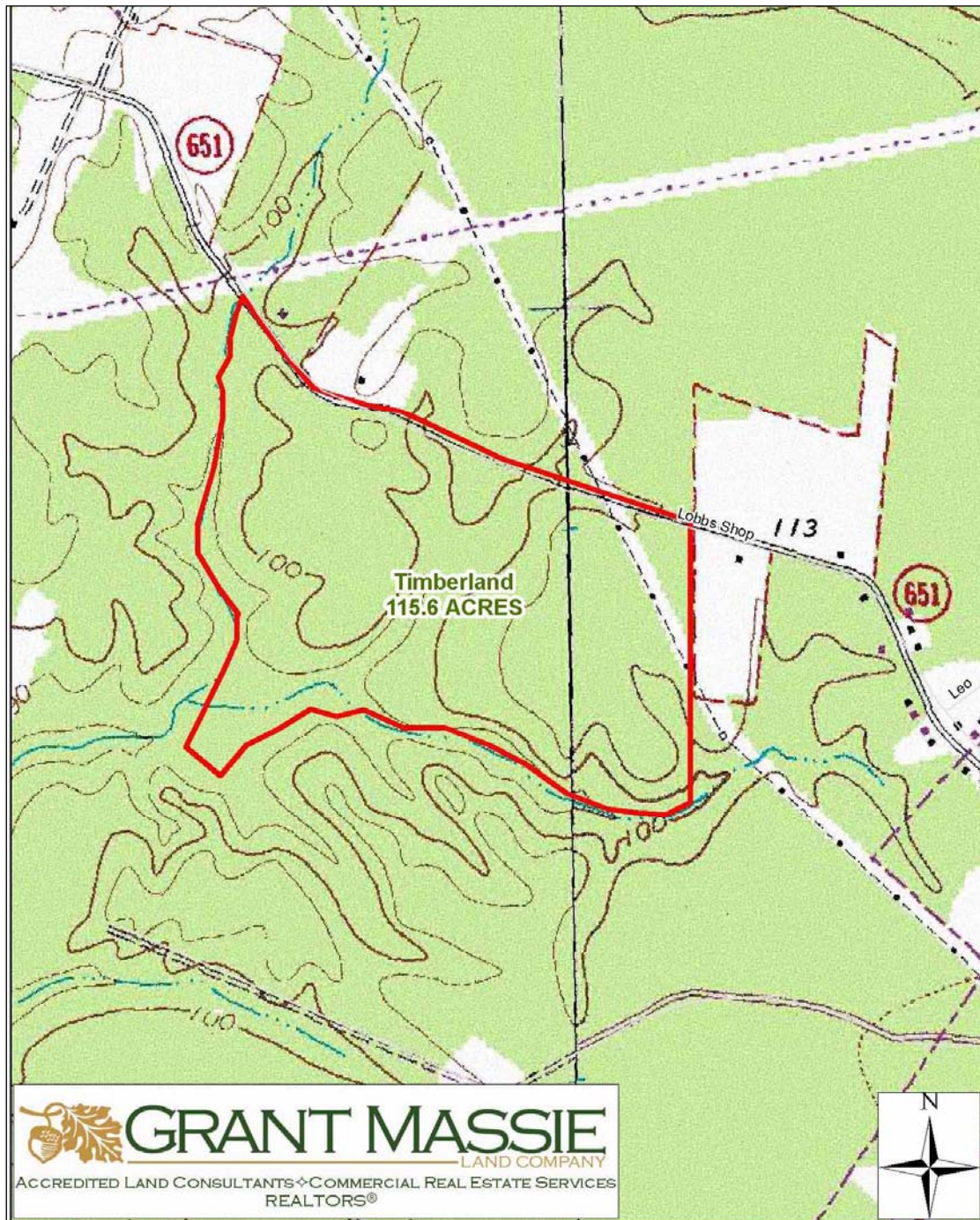
The subject property is currently zoned A-1. There are approximately 3,040' +/- of road frontage on Route 651 (Lobbs Shop Road).

There are 110 acres of thinned pine pulpwood and 5 acres of hardwood pulpwood.

AERIAL PHOTOGRAPH



TOPOGRAPHIC MAP

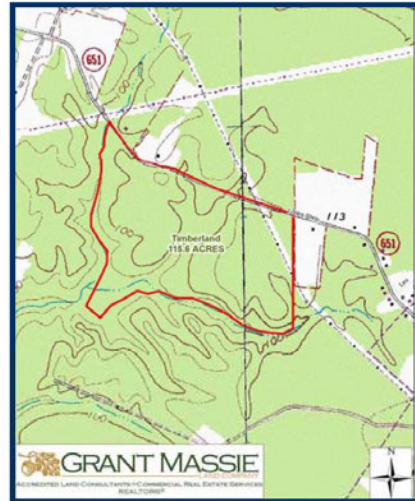
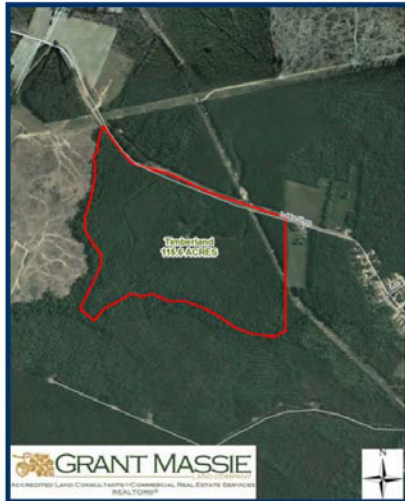


LOCATION MAP



TIMBERLAND INVESTMENT!

115.585 ACRES +/- FOR SALE IN SUSSEX COUNTY, VA



PROPERTY INFORMATION:

- *THINNED PINE PLANTATION
- *FRONTAGE ON RT. 651 (LOBBS SHOP ROAD)
- *CONVENIENT TO WAVERLY & HIGHWAY 460
- *IDEAL HOLD FOR FUTURE GROWTH
- *ASKING PRICE \$227,000**

FOR 24 HOUR RECORDED INFORMATION
CALL LANDLINE: 1-888-471-LAND #2119
WWW.GRANTMASSIE.COM

REPRESENTED BY:

NED MASSIE
ALC, CCIM, MBA
(804) 754-3474
NMassie@GrantMassie.com

BILL GRANT
ALC, VLS
(804) 754-3476
WGrant@GrantMassie.com

JEFF HUFF
REALTOR, FORESTER
(804) 750-1207
JHuff@GrantMassie.com



EXPERTISE—CONSULTATION—RESULTS

1403 Pemberton Road, Suite 106; Richmond, VA 23238
804-750-1200—FAX: 804-754-3485 TOLL FREE: 1-800-665-LAND
All information deemed reliable, but not guaranteed.