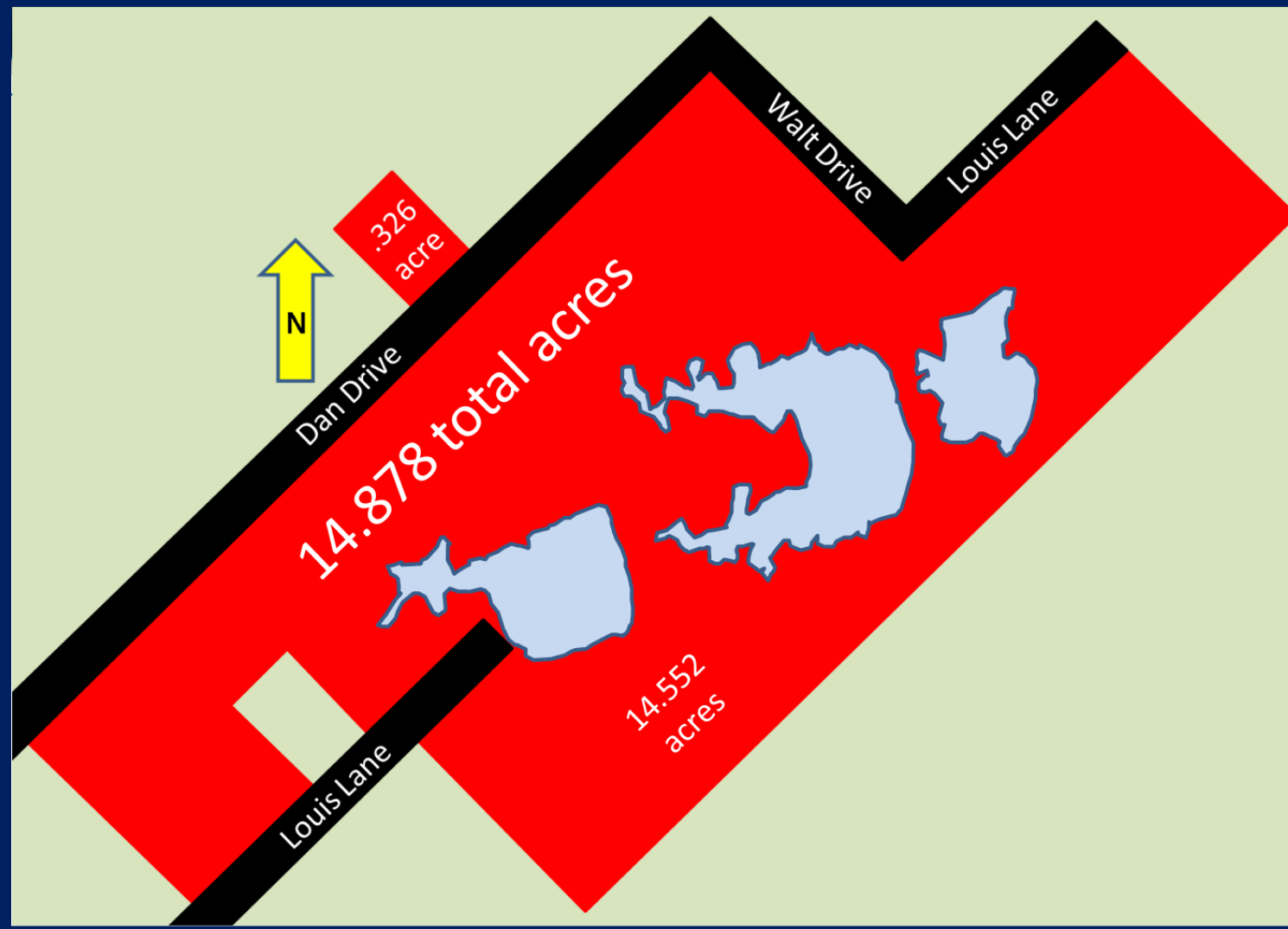
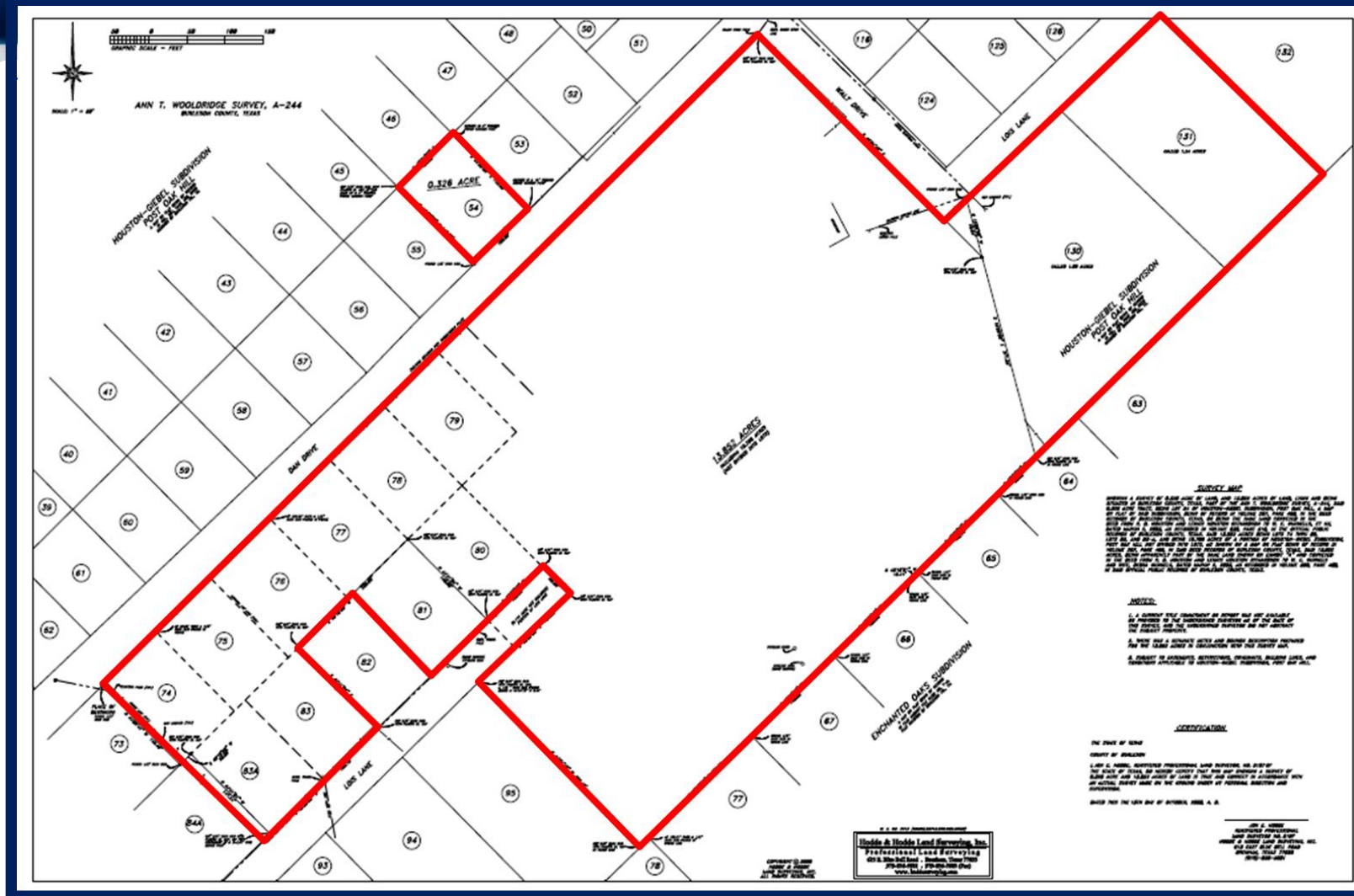


# Plat overview



# Plat with property outline



# Sample site plan assumptions and model overview

## Assumptions

- (1) Sell off 11 existing surveyed and platted lots
- (2) 0.338 est. acres avg. lot size
- (3) 3.718 est. acres sold to reduce capital investment
- (4) \$150,000 initial capital cost

Price per lot	Gross proceeds	\$ per acre gross	Residual gross capital cost for property
4,000	44,000	11,834	106,000
4,500	49,500	13,314	100,500
5,000	55,000	14,793	95,000
5,500	60,500	16,272	89,500
6,000	66,000	17,751	84,000
6,500	71,500	19,231	78,500
7,000	77,000	20,710	73,000
7,500	82,500	22,189	67,500
8,000	88,000	23,669	62,000

# Sample site plan using existing surveyed plats

