

**Barbara D. Mosier**

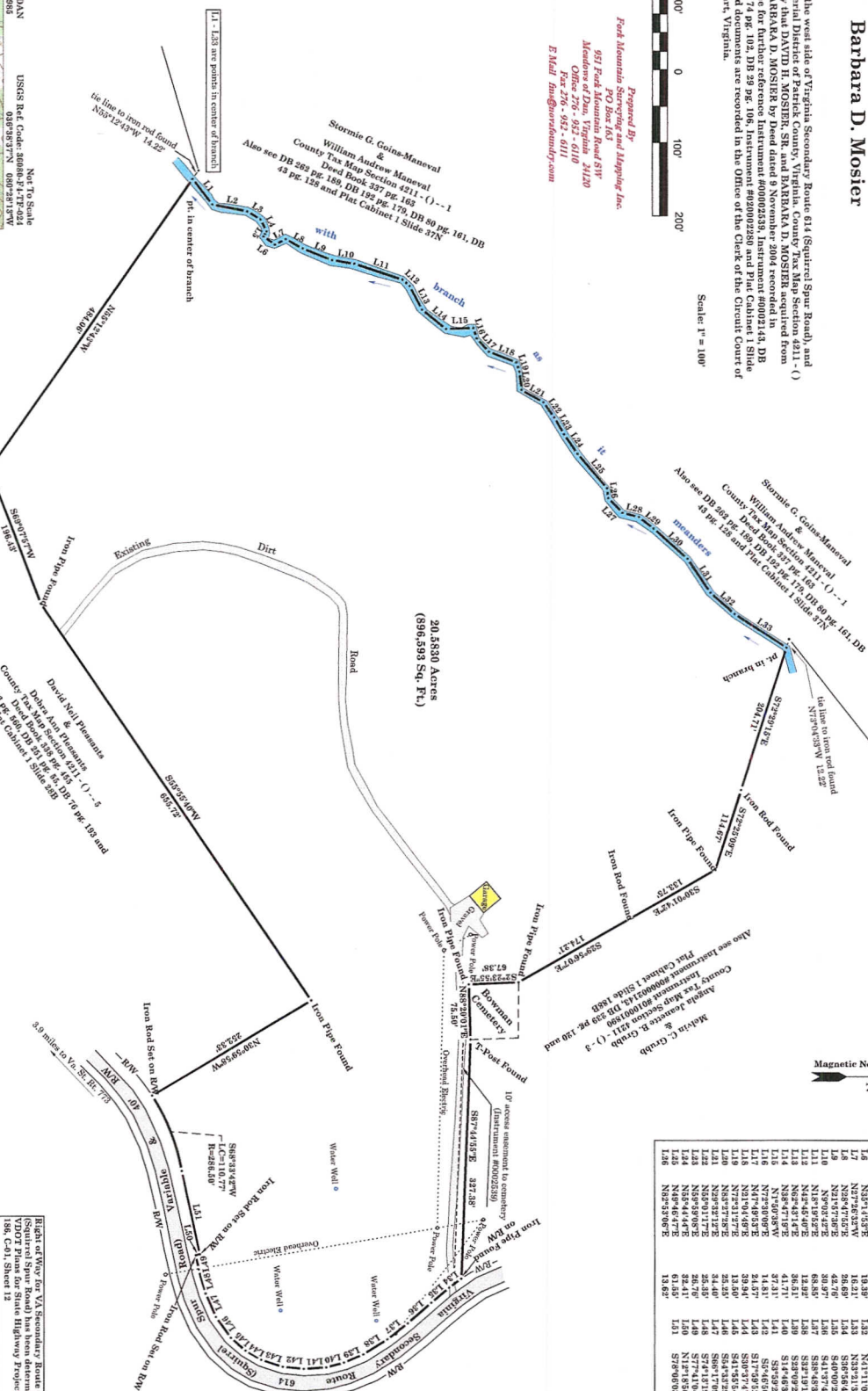
Showing property located on the west side of Virginia Secondary Route 614 (Spartan Spur Road), and lying in the Pine Ridge Magisterial District of Patrick County, Virginia, County Tax Map Section 4211, (- 18 being all the same property that DAVID H. MOSIER, SR. and BARBARA A. MOSIER acquired from DAVID H. MOSIER, SR. and BARBARA D. MOSIER by Deed dated 9 November 2004 recorded in Instrument #0400003137. Also see for further reference Instrument #000002280 and Plat Cabinet 1 Slide 229 pg. 120, DB 01 43, DB 17 pg. 102, DB 39 pg. 106. Instrument #000002280 and Plat Cabinet 1 Slide 2097. All of the aforementioned documents are recorded in the Office of the Circuit Court of the Circuit Court located in Stuart, Virginia.

January 14, 2005

Scale: 1" = 100'



*Prepared By*  
Fork Mountain  
Surrey and Mapping  
PO Box 163  
951 Fork Mountain Road SW  
Meadows of Dun, Virginia 24120  
Office 276 - 952 - 6110  
Fax 276 - 952 - 6111  
E-Mail [fms@novatourndry.com](mailto:fms@novatourndry.com)



LINE	NAME	HOLM ID	ST	RA	DEC	RA	DEC	RA	DEC
L1	N27505.95E	43.57	L27	N18551.65E	27.87				
L2	N27505.95E	43.57	L28	N18551.65E	27.87				
L3	N18591.75E	21.10	L29	N18585.85E	25.03				
L4	N18591.75E	21.10	L30	N18585.85E	25.03				
L5	N18591.75E	18.65	L31	N18474.65E	21.75				
L6	N18591.75E	18.65	L32	N18474.65E	21.75				
L7	N27505.95E	16.17	L33	N18411.65E	43.74				
L8	N27505.95E	16.17	L34	N23471.75E	43.87				
L9	N27505.95E	16.69	L35	N23471.75E	43.87				
L10	N27505.95E	16.69	L36	N23471.75E	43.87				
L11	N27505.95E	16.87	L37	S1157.15E	42.82				
L12	N27505.95E	16.87	L38	S1157.15E	42.82				
L13	N18195.95E	68.85	L39	S1849.95E	35.40				
L14	N18195.95E	68.85	L40	S1849.95E	35.40				
L15	N18195.95E	68.85	L41	S1849.95E	35.40				
L16	N18195.95E	68.85	L42	S1849.95E	35.40				
L17	N18195.95E	68.87	L43	S1849.95E	35.72				
L18	N18195.95E	72.31	L44	S1799.25E	30.72				
L19	N18195.95E	72.31	L45	S1799.25E	30.72				
L20	N18195.95E	61.71	L46	S1465.95E	24.47				
L21	N18195.95E	61.71	L47	S1465.95E	24.47				
L22	N18195.95E	61.71	L48	S1465.95E	24.47				
L23	N18195.95E	61.71	L49	S1465.95E	24.47				
L24	N18195.95E	61.71	L50	S1465.95E	24.47				
L25	N18195.95E	61.71	L51	S1465.95E	24.47				
L26	N18195.95E	61.71	L52	S1465.95E	24.47				
L27	N18195.95E	61.71	L53	S1465.95E	24.47				
L28	N18195.95E	61.71	L54	S1465.95E	24.47				
L29	N18195.95E	61.71	L55	S1465.95E	24.47				
L30	N18195.95E	61.71	L56	S1465.95E	24.47				
L31	N18195.95E	61.71	L57	S1465.95E	24.47				
L32	N18195.95E	61.71	L58	S1465.95E	24.47				
L33	N18195.95E	61.71	L59	S1465.95E	24.47				
L34	N18195.95E	61.71	L60	S1465.95E	24.47				
L35	N18195.95E	61.71	L61	S1465.95E	24.47				
L36	N18195.95E	61.71	L62	S1465.95E	24.47				
L37	N18195.95E	61.71	L63	S1465.95E	24.47				
L38	N18195.95E	61.71	L64	S1465.95E	24.47				
L39	N18195.95E	61.71	L65	S1465.95E	24.47				
L40	N18195.95E	61.71	L66	S1465.95E	24.47				
L41	N18195.95E	61.71	L67	S1465.95E	24.47				
L42	N18195.95E	61.71	L68	S1465.95E	24.47				
L43	N18195.95E	61.71	L69	S1465.95E	24.47				
L44	N18195.95E	61.71	L70	S1465.95E	24.47				
L45	N18195.95E	61.71	L71	S1465.95E	24.47				
L46	N18195.95E	61.71	L72	S1465.95E	24.47				
L47	N18195.95E	61.71	L73	S1465.95E	24.47				
L48	N18195.95E	61.71	L74	S1465.95E	24.47				
L49	N18195.95E	61.71	L75	S1465.95E	24.47				
L50	N18195.95E	61.71	L76	S1465.95E	24.47				
L51	N18195.95E	61.71	L77	S1465.95E	24.47				
L52	N18195.95E	61.71	L78	S1465.95E	24.47				
L53	N18195.95E	61.71	L79	S1465.95E	24.47				
L54	N18195.95E	61.71	L80	S1465.95E	24.47				
L55	N18195.95E	61.71	L81	S1465.95E	24.47				
L56	N18195.95E	61.71	L82	S1465.95E	24.47				
L57	N18195.95E	61.71	L83	S1465.95E	24.47				
L58	N18195.95E	61.71	L84	S1465.95E	24.47				
L59	N18195.95E	61.71	L85	S1465.95E	24.47				
L60	N18195.95E	61.71	L86	S1465.95E	24.47				
L61	N18195.95E	61.71	L87	S1465.95E	24.47				
L62	N18195.95E	61.71	L88	S1465.95E	24.47				
L63	N18195.95E	61.71	L89	S1465.95E	24.47				
L64	N18195.95E	61.71	L90	S1465.95E	24.47				
L65	N18195.95E	61.71	L91	S1465.95E	24.47				
L66	N18195.95E	61.71	L92	S1465.95E	24.47				
L67	N18195.95E	61.71	L93	S1465.95E	24.47				
L68	N18195.95E	61.71	L94	S1465.95E	24.47				
L69	N18195.95E	61.71	L95	S1465.95E	24.47				
L70	N18195.95E	61.71	L96	S1465.95E	24.47				
L71	N18195.95E	61.71	L97	S1465.95E	24.47				
L72	N18195.95E	61.71	L98	S1465.95E	24.47				
L73	N18195.95E	61.71	L99	S1465.95E	24.47				
L74	N18195.95E	61.71	L100	S1465.95E	24.47				
L75	N18195.95E	61.71	L101	S1465.95E	24.47				
L76	N18195.95E	61.71	L102	S1465.95E	24.47				
L77	N18195.95E	61.71	L103	S1465.95E	24.47				
L78	N18195.95E	61.71	L104	S1465.95E	24.47				
L79	N18195.95E	61.71	L105	S1465.95E	24.47				
L80	N18195.95E	61.71	L106	S1465.95E	24.47				
L81	N18195.95E	61.71	L107	S1465.95E	24.47				
L82	N18195.95E	61.71	L108	S1465.95E	24.47				
L83	N18195.95E	61.71	L109	S1465.95E	24.47				
L84	N18195.95E	61.71	L110	S1465.95E	24.47				
L85	N18195.95E	61.71	L111	S1465.95E	24.47				
L86	N18195.95E	61.71	L112	S1465.95E	24.47				
L87	N18195.95E	61.71	L113	S1465.95E	24.47				
L88	N18195.95E	61.71	L114	S1465.95E	24.47				
L89	N18195.95E	61.71	L115	S1465.95E	24.47				
L90	N18195.95E	61.71	L116	S1465.95E	24.47				
L91	N18195.95E	61.71	L117	S1465.95E	24.47				
L92	N18195.95E	61.71	L118	S1465.95E	24.47				
L93	N18195.95E	61.71	L119	S1465.95E	24.47				
L94	N18195.95E	61.71	L120	S1465.95E	24.47				
L95	N18195.95E	61.71	L121	S1465.95E	24.47				
L96	N18195.95E	61.71	L122	S1465.95E	24.47				
L97	N18195.95E	61.71	L123	S1465.95E	24.47				
L98	N18195.95E	61.71	L124	S1465.95E	24.47				
L99	N18195.95E	61.71	L125	S1465.95E	24.47				
L100	N18195.95E	61.71	L126	S1465.95E	24.47				
L101	N18195.95E	61.71	L127	S1465.95E	24.47				
L102	N18195.95E	61.71	L128	S1465.95E	24.47				
L103	N18195.95E	61.71	L129	S1465.95E	24.47				
L104	N18195.95E	61.71	L130	S1465.95E	24.47				
L105	N18195.95E	61.71	L131	S1465.95E	24.47				
L106	N18195.95E	61.71	L132	S1465.95E	24.47				
L107	N18195.95E	61.71	L133	S1465.95E	24.47				
L108	N18195.95E	61.71	L134	S1465.95E	24.47				
L109	N18195.95E	61.71	L135	S1465.95E	24.47				
L110	N18195.95E	61.71	L136	S1465.95E	24.47				
L111	N18195.95E	61.71	L137	S1465.95E	24.47				
L112	N18195.95E	61.71	L138	S1465.95E	24.47				
L113	N18195.95E	61.71	L139	S1465.95E	24.47				
L114	N18195.95E	61.71	L140	S1465.95E	24.47				
L115	N18195.95E	61.71	L141	S1465.95E	24.47				
L116	N18195.95E	61.71	L142	S1465.95E	24.47				
L117	N18195.95E	61.71	L143	S1465.95E	24.47				
L118	N18195.95E	61.71	L144	S1465.95E	24.47				
L119	N18195.95E	61.71	L145	S1465.95E	24.47				
L120	N18195.95E	61.71	L146	S1465.95E	24.47				
L121	N18195.95E	61.71	L147	S1465.95E	24.47				
L122	N18195.95E	61.71	L148	S1465.95E	24.47				
L123	N18195.95E	61.71	L149	S1465.95E	24.47				
L124	N18195.95E	61.71	L150	S1465.95E	24.47				
L125	N18195.95E	61.71	L151	S1465.95E	24.47				
L126	N18195.95E	61.71	L152	S1465.95E	24.47				
L127	N18195.95E	61.71	L153	S1465.95E	24.47				
L128	N18195.95E	61.71	L154	S1465.95E	24.47				
L129	N18195.95E	61.71	L155	S1465.95E	24.47				
L130	N18195.95E	61.71	L156	S1465.95E	24.47				
L131	N18195.95E	61.71	L157	S1465.95E	24.47				
L132	N18195.95E	61.71	L158	S1465.95E	24.47				
L133	N18195.95E	61.71	L159	S1465.95E	24.47				
L134	N18195.95E	61.71	L160	S1465.95E	24.47				
L135	N18195.95E	61.71	L161	S1465.95E	24.47				
L136	N18195.95E	61.71	L162	S1465.95E	24.47				
L137	N18195.95E	61.71	L163	S1465.95E	24.47				
L138	N18195.95E	61.71	L164	S1465.95E	24.47				
L139	N18195.95E	61.71	L165	S1465.95E	24.47				
L140	N18195.95E	61.71	L166	S1465.95E	24.47				
L141	N18195.95E	61.71	L167	S1465.95E	24.47				
L142	N18195.95E	61.71	L168	S1465.95E	24.47				
L143	N18195.95E	61.71	L169	S1465.95E	24.47				
L144	N18195.95E	61.71	L170	S1465.95E	24.47				
L145	N18195.95E	61.71	L171	S1465.95E	24.47				
L146	N18195.95E	61.71	L172	S1465.95E	24.47				
L147	N18195.95E	61.71	L173	S1465.95E	24.47				
L148	N18195.95E	61.71	L174	S1465.95E	24.47				
L149	N18195.95E	61.71	L175	S1465.95E	24.47				
L150	N18195.95E	61.71	L176	S1465.95E	24.47				
L151	N18195.95E	61.71	L1						

Right of Way for VA Secondary Route 614 (Squirrel Spur Road) has been determined from VDOT Plans for State Highway Project 0614-070-186, C-01, Sheet 12

I hereby certify that this "Plot of Survey for Barbara D. Mosley" is a true and accurate representation of the land as recently surveyed under my direction.

JOHN D. LEWIS Licensed Land Surveyor #1326  
Commonwealth of Virginia

VIRGINIA: IN THE OFFICE OF THE CLERK OF THE CIRCUIT COURT OF  
PATRICK COUNTY, ON THIS THE \_\_\_\_\_ DAY  
OF \_\_\_\_\_, 2009 AT \_\_\_\_\_, M. THIS MAP  
RECEIVED IN OFFICE AND ADMITTED TO RECORD.

**TESTEE**

