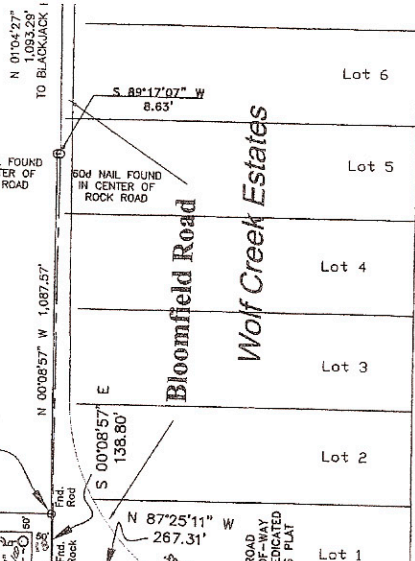


LAKE RAY ROBERTS ESTATES, LLC  
MAY 03, 2007  
(TRACT ONE, 62.468 ACRES)  
VOL. 1500, PG. 128 D.R.C.C.T.

COX LAND SURVEYING  
BOUNDARY SURVEY  
DATED: NOVEMBER 06, 2007  
CALLED 114.858 ACRES

**SOLD**

POINT OF  
BEGINNING



SCALE: 1" = 300'

Frank Wooten  
10 Nov. 1937  
Vol. 237, Pg. 238  
D.R.C.C.

USA  
16 April 1985  
Vol. 713 Pg. 97  
D.R.C.C.

Michael Jon Whitlock  
27 Dec. 2001  
7,005 Ac.  
Vol. 1172, Pg. 68  
D.R.C.C.

LOT 5  
483,760 sq. ft.  
**SOLD**

LOT 9  
**SOLD**

LOT 8  
**SOLD**

LOT 4  
**SOLD**

LOT 3  
**SOLD**

LAKEPOINT ESTATES  
PHASE ONE  
121.41 ACRES

**SOLD**

LAKE RAY ROBERTS ESTATES, LLC  
MAY 03, 2007  
(TRACT TWO, 107.854 ACRES)  
VOL. 1500, PG. 128 D.R.C.C.T.

FUTURE  
PHASE TWO

CHARLES BELL SURVEY  
ABSTRACT NO. 54

LOT 7  
483,904 sq. ft.  
11.11 acres

**SOLD**

LAKEPOINT ESTATES  
PHASE ONE  
121.41 ACRES

LOT 2  
544,503 sq. ft.  
12.50 acres

LOT 1  
545,365 sq. ft.  
12.52 acres

DAVID PARKINS SURVEY  
ABSTRACT NO. 832

Sable & Mc Clung Family  
01 Jan. 2005  
Vol. 1407, Pg. 152 D.R.C.C.

Kenneth Nelson et ux  
Joann Nelson  
18 Feb. 2005  
Vol. 1357, Pg. 404  
D.R.C.C.

Walter J. Hesse  
Second Tract, (111.643 Ac.)  
Vol. 588, Pg. 474 D.R.C.C.

Lake Ray Roberts