

# ***27900 Skyview Rd***

## ***20 Acres Mendocino County***



**There are acres and acres of gentle ridgetop land which has been partially cleared. There is excellent privacy with an end of road driveway to the homestead. Access is also available to the east side of the property with its gentle sloping southern meadows and another fine building site. The potential is almost limitless for ranching and agricultural purposes.**

**The Skyview Ranch is located in 3rd Gate off Sherwood Rd north west of Willits. There is a comfortable 2 bedroom home and also a (yurt) guest cabin. Water is abundant from a strong year round spring, pond and a drilled well. Power is supplied by a photovoltaic system with 5000W Honda generator for backup. The home boasts a sunroom and has excellent southern exposure.**



***This property is very unique with its abundant water supply, privacy and acres of usable land in a very gorgeous setting.***

***Asking price \$470,000***

***Tony Sorace Land and Ranch Broker***  
***Ponderosa and Sun Realty, Inc.***

**635 South Main St.  
(707) 459-5108**

**Willits, CA 95490  
459-0540 fax pondsun.com**





**LIVING ROOM**



*Sleeping loft*



*WATER IS ABUNDANT FROM FREELY  
FLOWING SPRINGS AND POND*



*HIGH GROUND MEADOWS*





*Bedroom*



*Yurt*



*Office*

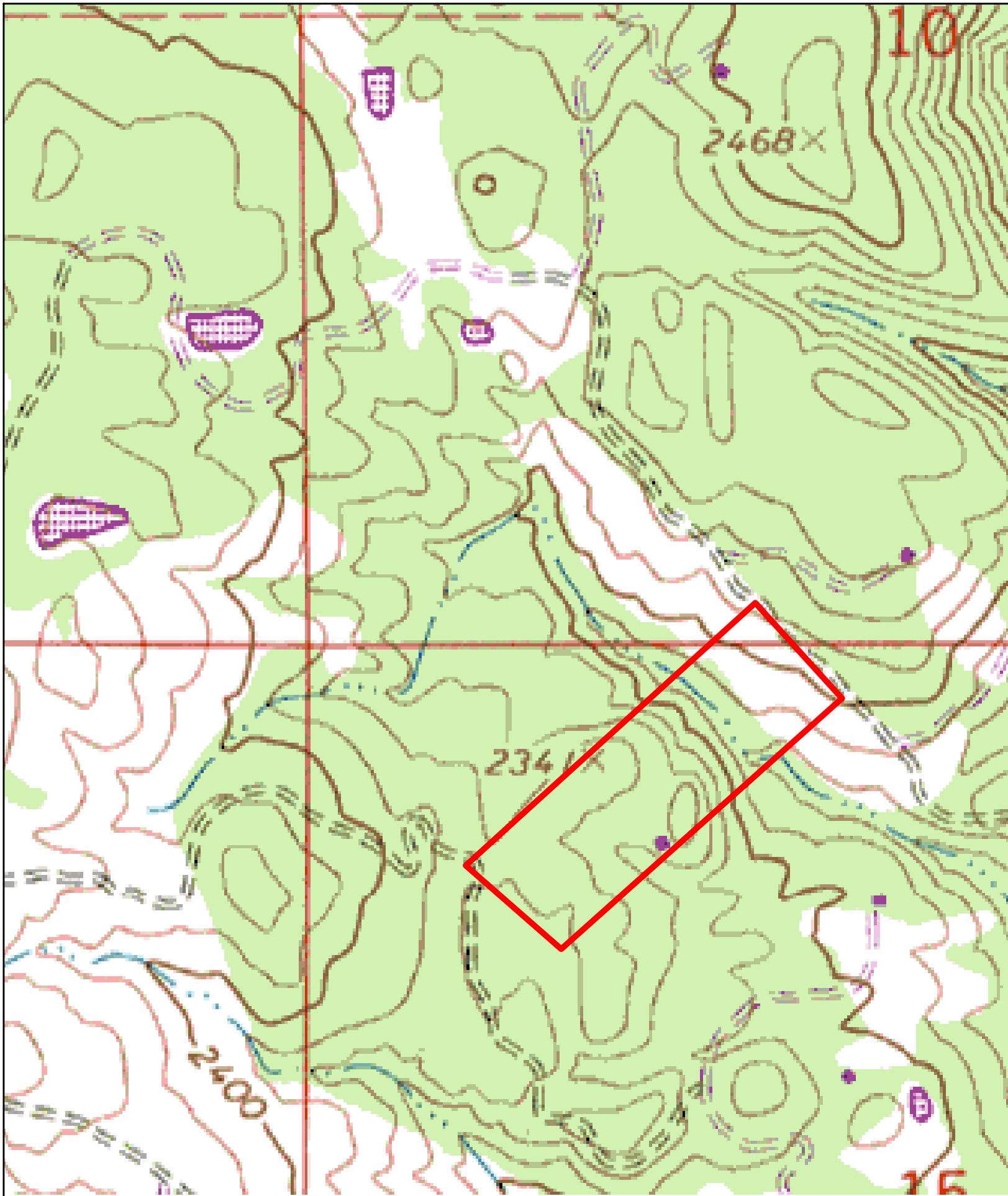


*South elevation*

***Tony Sorace Land and Ranch Broker  
Ponderosa and Sun Realty, Inc.***

635 South Main St. Willits, CA 95490  
459-0540 fax [www.pondsun.com](http://www.pondsun.com)

(707) 459-5108



Name: LONGVALE  
Date: 8/6/2008  
Scale: 1 inch equals 500 feet

Location: 039° 30.4571' N 123° 24.4258' W NAD27  
Caption: Skyview Ranch  
Map for reference only  
accuracy not guaranteed





Name: LONGVALE SE, CA  
Date: 8/6/2008  
Scale: 1 inch equals 250 feet

Location: 039° 30.3484' N 123° 24.3033' W NAD27  
Caption: Skyview Ranch  
Map for reference only  
accuracy not guaranteed





# Skyviewlocate

