

PONDEROSA AND SUN REALTY, INC.

TONY SORACE LAND AND RANCH BROKER

635 S. Main St., Willits. Ca 95490 707-459-5108 459-0540 fax

Website pondsun.com Email: tonysorace@pacific.net

PALO VERDE #18 **40 ac PARCEL**



The land cover is diverse with heavy forest and brilliant open meadows. The land features a beautiful year round pond, drilled well, and a year round spring. Gentle benches provide ample room for homesteading and organic gardening as well as family orchards.



Palo Verde Estates is located 16 miles east of Garberville in southern Humboldt County. From Bell Springs Rd take Island Mountain Rd into the ranch. There is year round access and lovely vistas of the surrounding mountains and the Eel River Basin.



If you are looking for place to call home out in the mountains then this may be the land for you. There is quiet, peaceful isolation and wildlife abounds in this area, with deer, bear, quail, turkeys, grouse and other indigenous species

\$200,000 Cash or new loan



FABULOUS VIEWS OF MOUNTAINS

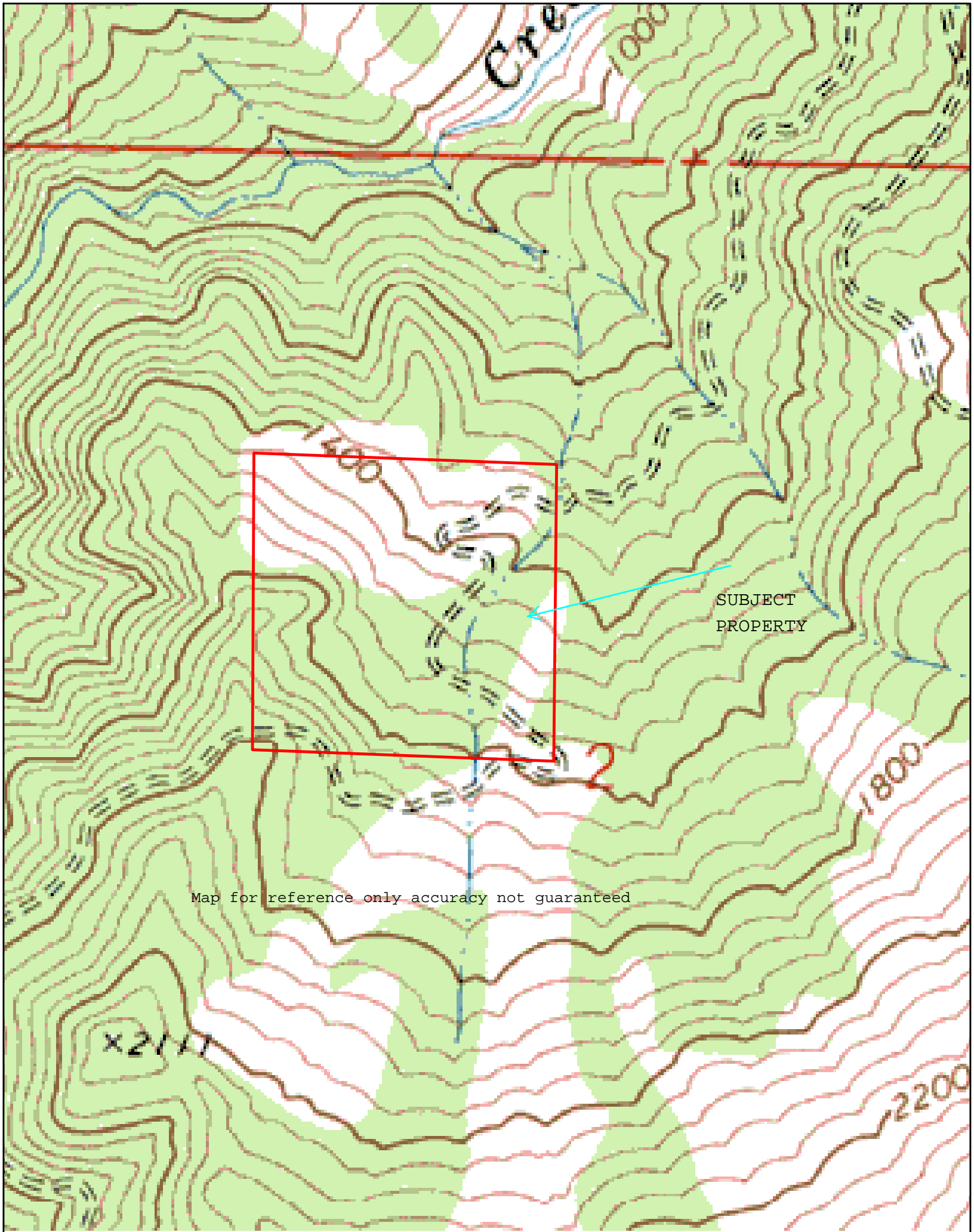


GENTLE KNOLLS



BEAUTIFUL MEADOWS





Map for reference only accuracy not guaranteed



POND

Map for reference only accuracy not guaranteed

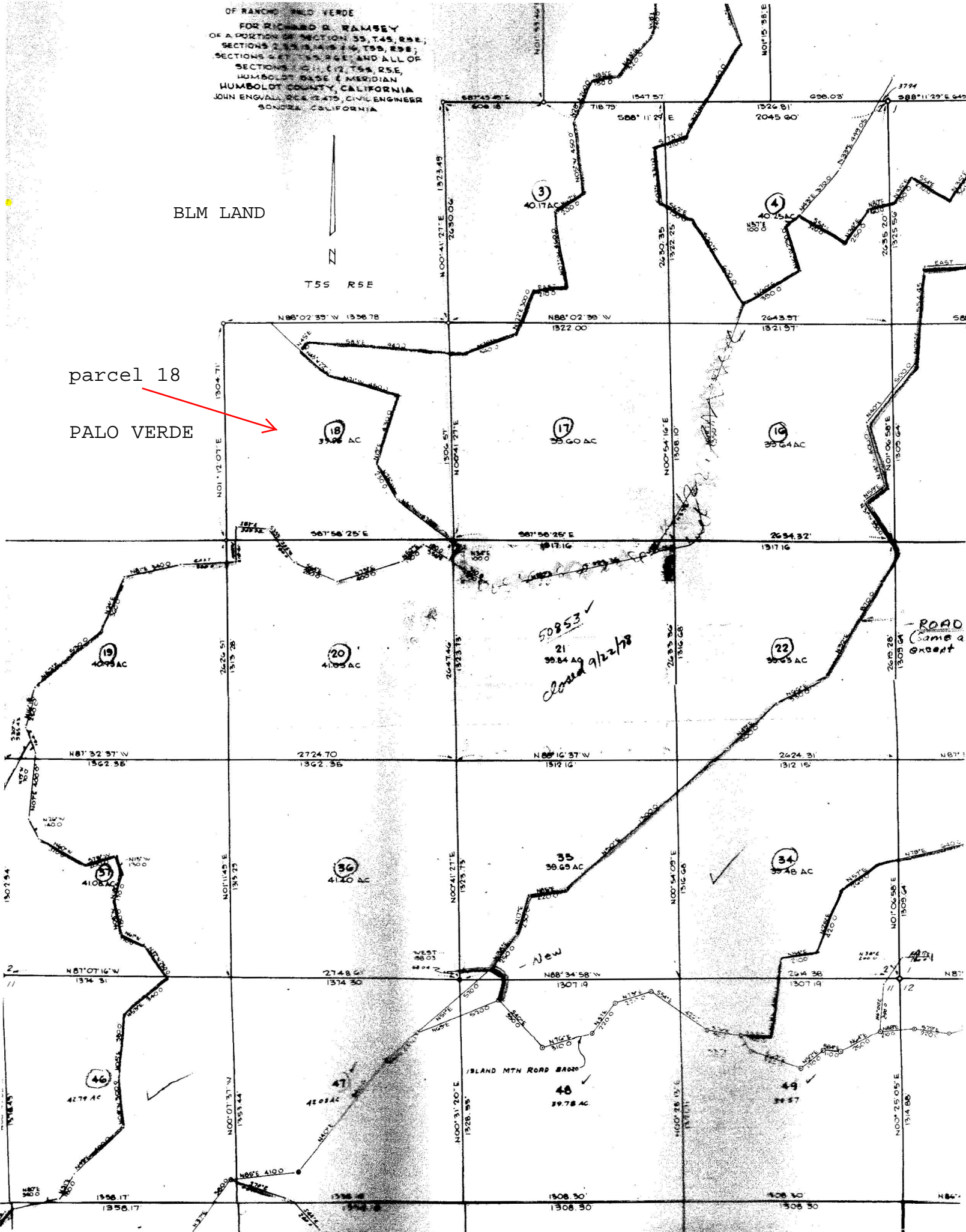
OF RANCHO PALO VERDE
 FOR RICHARD E. RAMSEY
 OF A PORTION OF SECTION 33, T4S, R5E;
 SECTIONS 2, 3, 4, 5, 14, T3S, R5E;
 SECTIONS 2, 3, 4, 5, 14, T3S, R5E;
 SECTIONS 2, 3, 4, 5, 14, T3S, R5E;
 HUMBOLDT BASE & MERIDIAN
 JOHN ENGVAL, C.E., CIVIL ENGINEER
 SONOMA, CALIFORNIA

BLM LAND

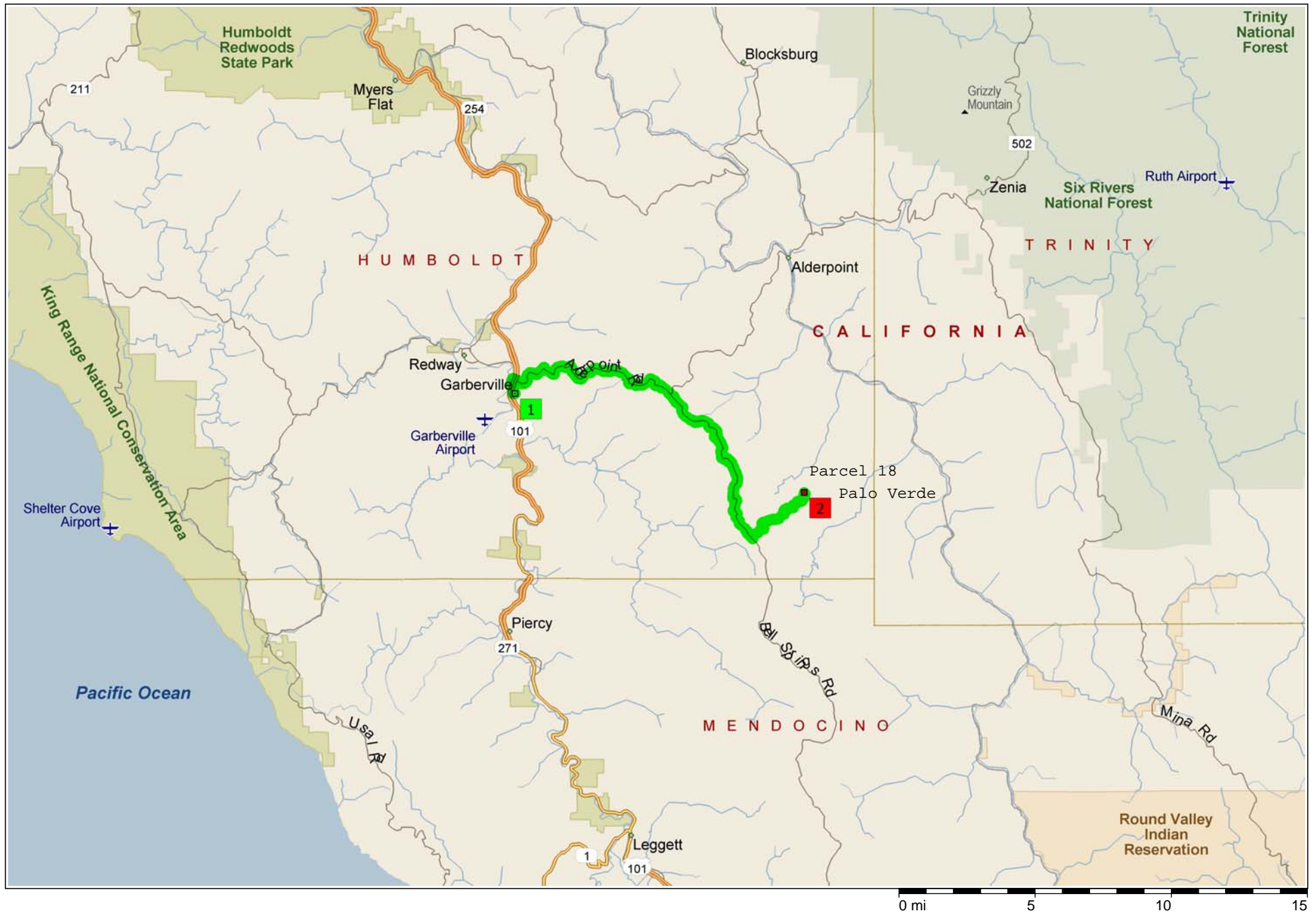
T5S R5E

parcel 18

PALO VERDE



3897 Road A, Garberville, CA 95542



Copyright © 1988-2003 Microsoft Corp. and/or its suppliers. All rights reserved. <http://www.microsoft.com/streets>

© Copyright 2002 by Geographic Data Technology, Inc. All rights reserved. © 2002 Navigation Technologies. All rights reserved. This data includes information taken with permission from Canadian authorities © 1991-2002 Government of Canada (Statistics Canada and/or Geomatics Canada), all rights reserved.