



ROBINSON CREEK 40

This 40 acre parcel lies 7 miles south-west of Ukiah on the back part of the Cox Ranch. There is good access on a private deeded road with seclusion and peaceful isolation. The land is gently rolling hills with gorgeous cover of oak studded meadows, groves of madrones, bays and and fabulous building sites with views of the surrounding mountains. There is a drilled well on the upper portion of the land which was rated @ 7 gpm at the time of installation. The land has been perc tested for a 3 bedroom home. If you want extraordinary beauty with excellent southern exposures . Power and telephone are on the adjacent roadway.

\$475,000 ASKING PRICE

OMC



Gorgeous meadows with oaks



The property is only 25 minutes from Ukiah



P O N D E R O S A A N D
S U N R E A L T Y

TONY SORACE

LAND AND RANCH BROKER

635 South Main St., Willits, Ca

707 459-5108 489-3763

tonysorace@pacific.net

LAND RANCHES EXCHANGES

This fine property is located in the heart of the Mendocino County There is a considerable amount of gentle, usable land and some gorgeous ridgetop . The views are outstanding and you owe to yourself to inspect this fine property

Call for an exclusive showing.



Building site with perc test

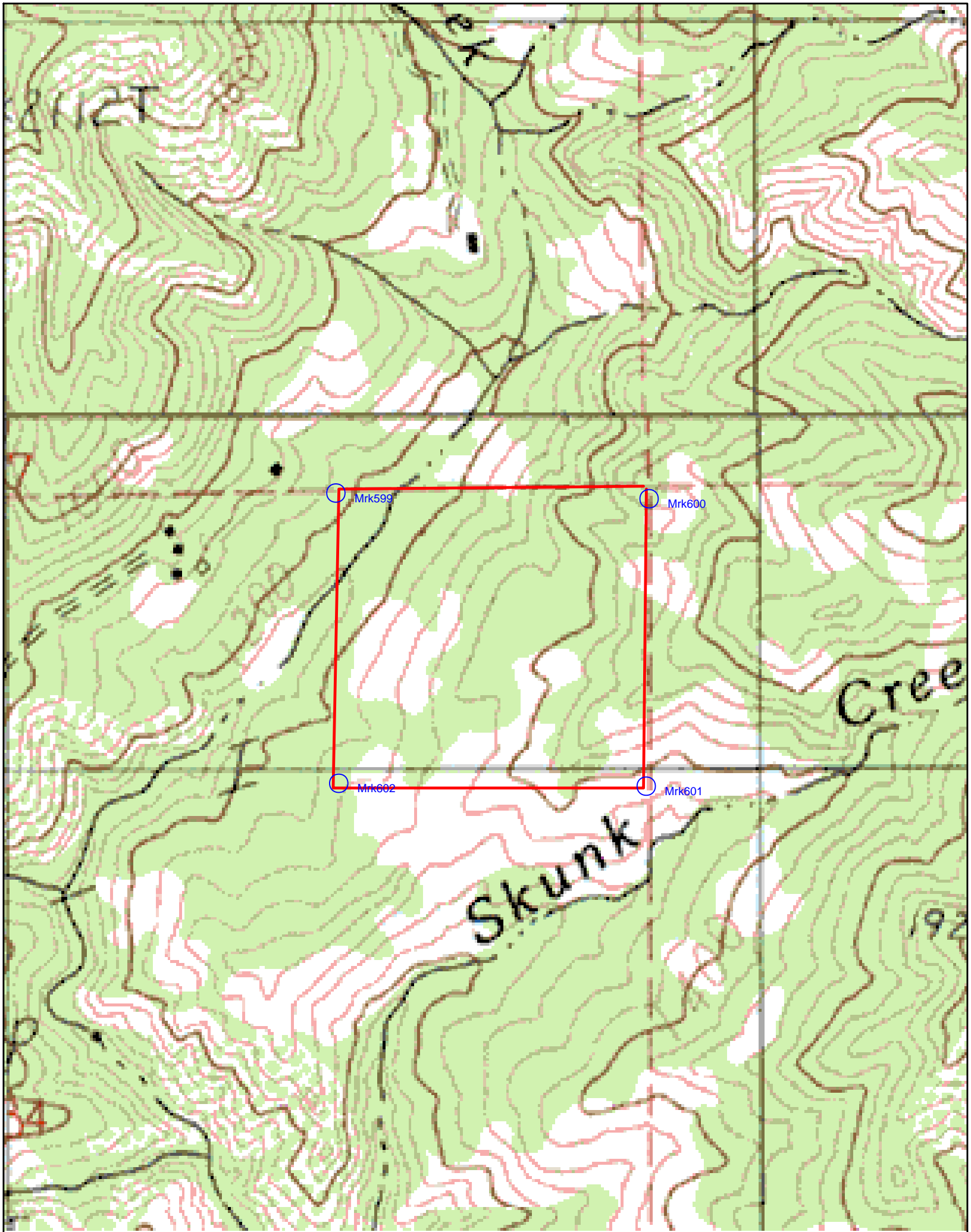
707 459-5108
pondsun.com

P O N D E R O S A A N D S U N R E A L T Y



Name: BOONVILLE NE, CA
Date: 8/7/2008
Scale: 1 inch equals 250 feet

Location: 039° 07.3306' N 123° 16.2085' W NAD27
Caption: Robinson Creek 40
Ukiah, Ca
Map for reference only
accuracy not guaranteed



Ukiah, California, United States

