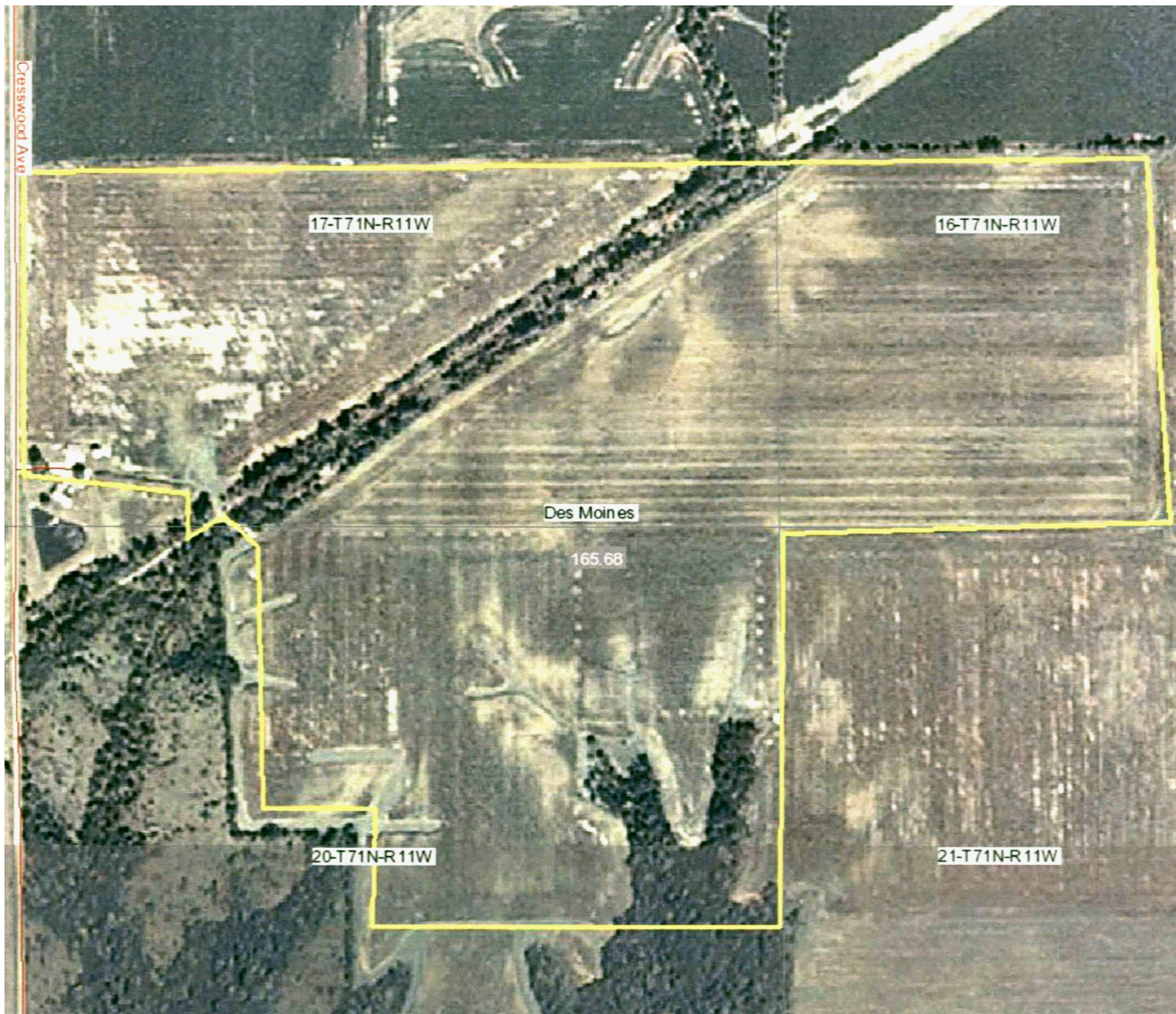


# EAST CROP – 168 AC



**\$680,568**

**\$4051/ac**

**ALAN E AMMONS**

BROKER ASSOCIATE / FARM MANAGER

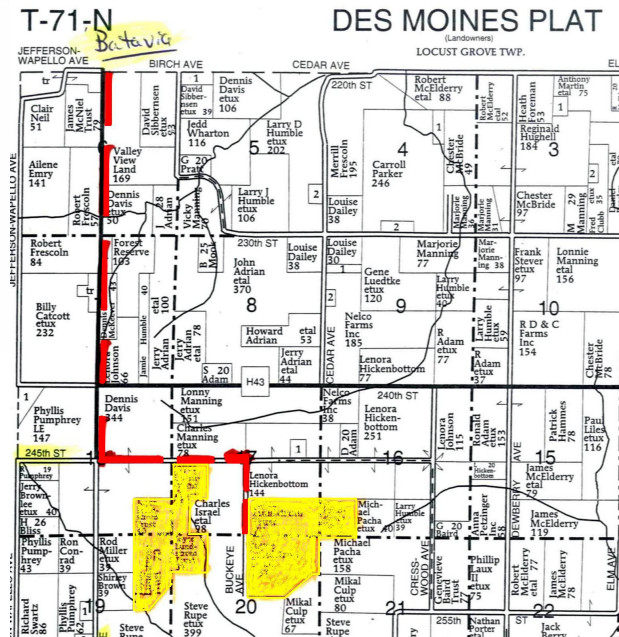
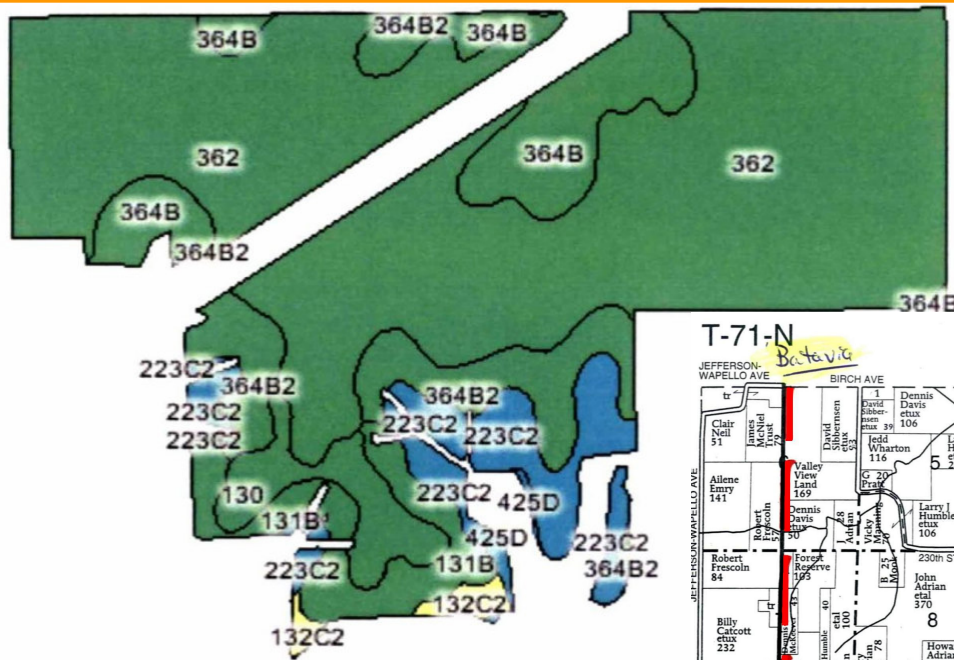
**Cell: 641-932-7796**



HAWKEYE FARM MANAGEMENT & REAL ESTATE  
22 N MAIN, PO Box 236 ALBIA, IA 52531  
OFFICE: 641-932-7796, FAX: 641-932-5076  
EMAIL: HAWKEYEFMRE@IOWATELECOM.NET  
WWW.HAWKEYE-RE.COM/ALBIA







Code	Soil Description	CSR Legend	Acres	Percent of field	Non-Irr Class	CSR
362	Haig silt loam, 0 to 2 percent slopes		96.1	63.3%	IIw	70
364B	Grundy silty clay loam, 2 to 5 percent slopes		16.4	10.8%	IIe	75
364B2	Grundy silty clay loam, 2 to 5 percent slopes, moderately eroded		11.6	7.6%	IIe	70
223C2	Rinda silty clay loam, 5 to 9 percent slopes, moderately eroded		11.4	7.5%	IVw	22
131B	Pershing silt loam, 2 to 5 percent slopes		8.5	5.6%	IIIe	67
130	Belinda silt loam, 0 to 2 percent slopes		6.1	4.0%	IIIw	63
132C2	Weller silty clay loam, 5 to 9 percent slopes, moderately eroded		1.5	1.0%	IIIe	40
425D	Keswick loam, 9 to 14 percent slopes		0.2	0.1%	IVe	16
Weighted Average						66.1

**Asking Price**                      **\$680,534**

**Tax Acres**                              **168**

**Price/Acre**                            **\$4051**

**Crop Acres**                            **152**

**% Crop Acres**                      **90%**

**Farm/Tract #**                        **232**

**Corn Base**                            **71 ac**

**Yield**                                    **110**

**Bean Base**                            **69 ac**

**Yield**                                    **34**

**Wheat Base**                        **7.4 ac**

**Yield**                                    **38**

**Price/Crop Acre**                    **\$4477**

**CSR/Crop Acre**                      **66.1**

**Price/CSR/Crop Acre**            **\$67.73**

The above information, although believed to be correct, is not warranted or guaranteed by the owner, listing firm or listing agent.